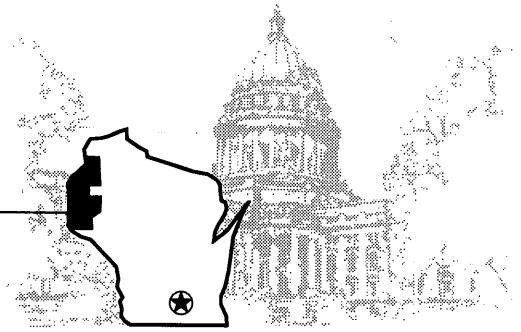




Alice Clausing

WISCONSIN STATE SENATOR



March 17, 1999

Members

Senate Committee on Agriculture, Environmental Resources,
and Campaign Finance Reform

Re: Senate Joint Resolution 12, relating to requesting Congress to enact legislation to
allow states to control the interstate shipment of solid waste

Dear Members:

There has been a request to move SJR 12 through paper ballot. The U.S. Congress will be
voting on this issue on Friday.

Please review the attached amendment and submit your paper ballot to my office no later
than 4:00 p.m. on Wednesday, March 17, 1999.

Sincerely,

A handwritten signature in cursive script that reads "Alice".

ALICE CLAUSING
State Senator
10th District

AC/lla



1999 SENATE JOINT RESOLUTION 12

March 16, 1999 - Introduced by Senators WIRCH, ROBSON, CLAUSING, COWLES, BAUMGART, SCHULTZ, GROBSCHMIDT, LAZICH, BRESKE, FARROW, ERPENBACH, DARLING, HUELSMAN and MOEN, cosponsored by Representatives JOHNSRUD, ALBERS, BOCK, FREESE, GOETSCH, GUNDERSON, HASENOHRL, HOVEN, HUBER, KELSO, KESTELL, KLUSMAN, LADWIG, LASSA, MONTGOMERY, MUSSER, NASS, OWENS, PETROWSKI, PLOUFF, REYNOLDS, SKINDRUD, SPILLNER, STONE, SUDER, URBAN, WARD and BERCEAU. Referred to Committee on Agriculture, Environmental Resources and Campaign Finance Reform.

1 **Relating to:** requesting Congress to enact legislation to allow states to control the
2 interstate shipment of solid waste.

3 Whereas, the amount of solid waste generated in the United States more than
4 doubled from 1960 to 1990; and

5 Whereas, in the next 15 years, 80% of the landfills that were operating in 1989
6 will be filled; and

7 Whereas, Congress, to date, has refused to address nonhazardous solid waste
8 regulation on a national level; and

9 Whereas, in 1990 this state passed a recycling law that prohibited the disposal
10 of solid waste in Wisconsin landfills unless the municipality generating the waste
11 had an effective recycling program in place; and this applied to municipalities both
12 in Wisconsin and outside of Wisconsin; and

13 Whereas, the recycling law also required states that ship waste to Wisconsin
14 to have effective landfill siting programs in place; and

1 Whereas, the U.S. district court for the western district of Wisconsin ruled that
2 the landfill siting provision violated the U.S. Constitution's commerce clause; and

3 Whereas, the 7th circuit court of appeals ruled that requiring out-of-state
4 communities to have effective recycling programs also violates the U.S.
5 Constitution's commerce clause; and

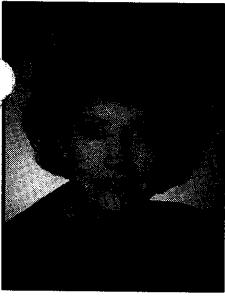
6 Whereas, resolving solid waste management issues under the commerce clause
7 alone does not give proper weight to environmental and land use considerations; and

8 Whereas, Wisconsin residents are required to recycle to conserve resources,
9 energy and landfill space; now, therefore, be it

10 ***Resolved by the senate, the assembly concurring, That*** the members of the
11 Wisconsin legislature request Congress to pass legislation giving a state the right to
12 limit the importing of solid waste from outside of the state; and, be it further

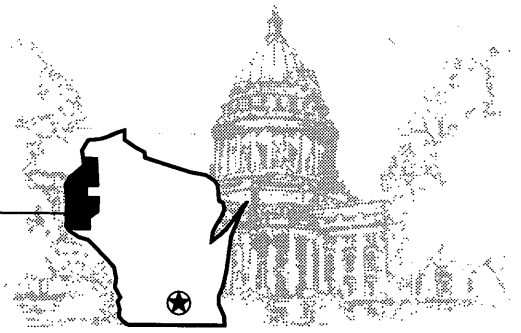
13 ***Resolved, That*** the senate chief clerk shall provide a copy of this joint
14 resolution to all members of this state's congressional delegation.

15 (END)



Alice Clausing

WISCONSIN STATE SENATOR



March 17, 1999

TO: Members, Senate Committee on Agriculture, Environmental Resources, and Campaign Finance Reform

FROM: Senator Alice Clausing, Chair

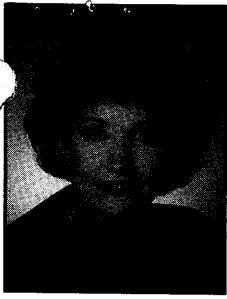
RE: Paper Ballot

Moved by Senator Clausing that the Senate Committee on Agriculture, Environmental Resources, and Campaign Finance Reform recommend Senate Joint Resolution 12 relating to requesting Congress to enact legislation to allow states to control the interstate shipment of solid waste.

Aye Nay

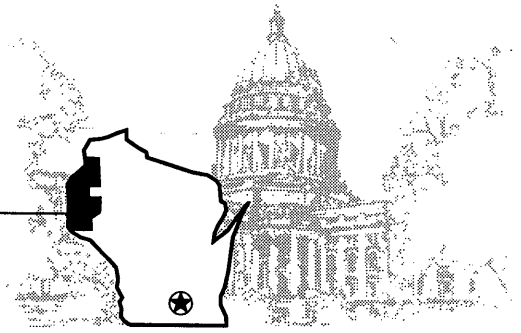
Senator Bob Wirch





Alice Clausing

WISCONSIN STATE SENATOR



March 17, 1999

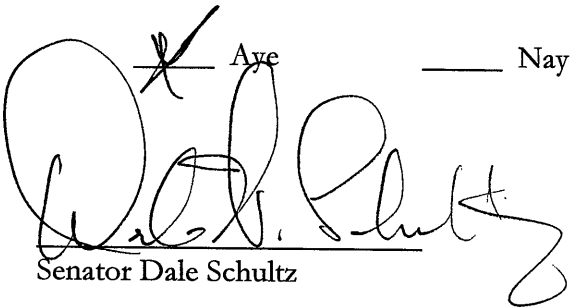
TO: Members, Senate Committee on Agriculture, Environmental Resources, and Campaign Finance Reform

FROM: Senator Alice Clausing, Chair

RE: Paper Ballot

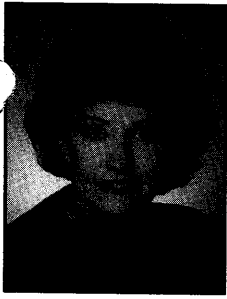
Moved by Senator Clausing that the Senate Committee on Agriculture, Environmental Resources, and Campaign Finance Reform recommend Senate Joint Resolution 12 relating to requesting Congress to enact legislation to allow states to control the interstate shipment of solid waste.

Aye Nay



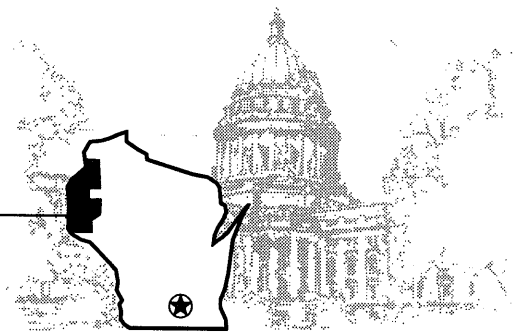
Senator Dale Schultz





Alice Clausing

WISCONSIN STATE SENATOR



March 17, 1999

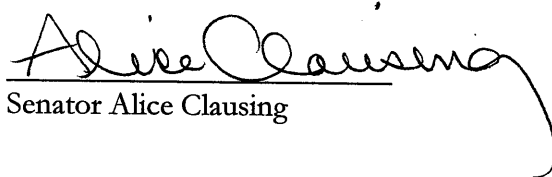
TO: Members, Senate Committee on Agriculture, Environmental Resources, and Campaign Finance Reform

FROM: Senator Alice Clausing, Chair

RE: Paper Ballot

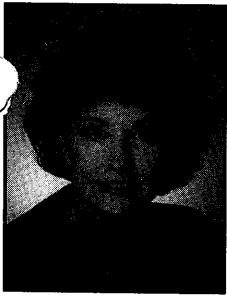
Moved by Senator Clausing that the Senate Committee on Agriculture, Environmental Resources, and Campaign Finance Reform recommend Senate Joint Resolution 12 relating to requesting Congress to enact legislation to allow states to control the interstate shipment of solid waste.

Aye Nay



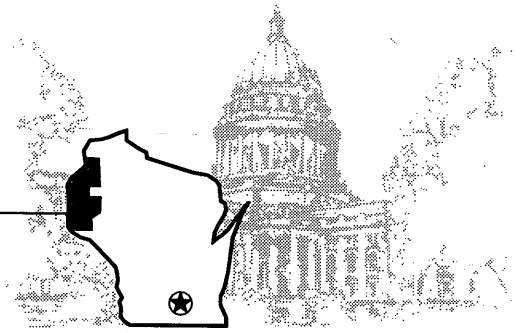
Senator Alice Clausing





Alice Clausing

WISCONSIN STATE SENATOR



March 17, 1999

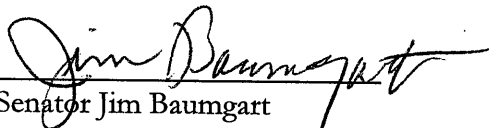
TO: Members, Senate Committee on Agriculture, Environmental Resources, and Campaign Finance Reform

FROM: Senator Alice Clausing, Chair

RE: Paper Ballot

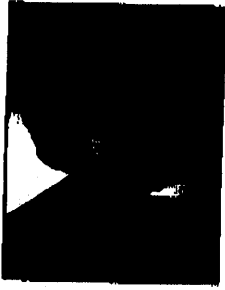
Moved by Senator Clausing that the Senate Committee on Agriculture, Environmental Resources, and Campaign Finance Reform recommend Senate Joint Resolution 12 relating to requesting Congress to enact legislation to allow states to control the interstate shipment of solid waste.

Aye Nay



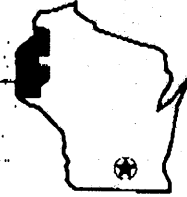
Senator Jim Baumgart





Alice Clausing

WISCONSIN STATE SENATOR



March 17, 1999

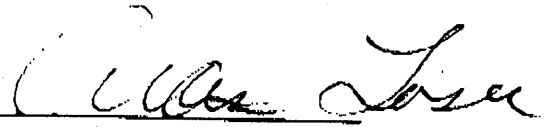
TO: Members, Senate Committee on Agriculture, Environmental Resources, and Campaign Finance Reform

FROM: Senator Alice Clausing, Chair

RE: Paper Ballot

Moved by Senator Clausing that the Senate Committee on Agriculture, Environmental Resources, and Campaign Finance Reform recommend Senate Joint Resolution 12 relating to requesting Congress to enact legislation to allow states to control the interstate shipment of solid waste.

Aye Nay



Senator Alan Lasee

