

Connecting Wisconsin to the World

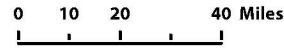
LEGISLATIVE COUNCIL MAP REQUEST

Presented by the Wisconsin Broadband Office

Internet Speed Availability

Maximum Available
Fixed Internet* Speeds
Download Speed / Upload Speed

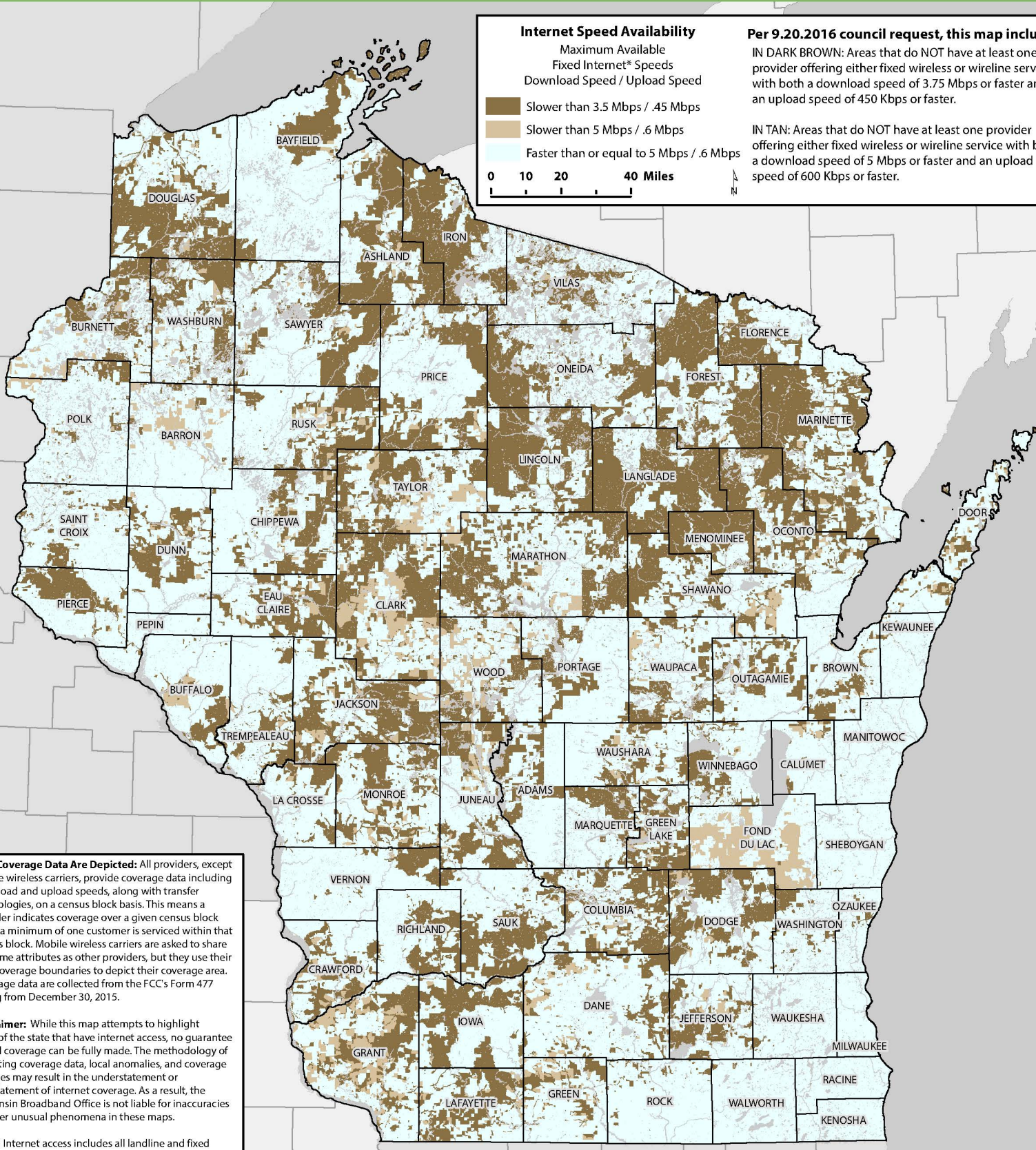
- Slower than 3.5 Mbps / .45 Mbps
- Slower than 5 Mbps / .6 Mbps
- Faster than or equal to 5 Mbps / .6 Mbps



Per 9.20.2016 council request, this map includes:

IN DARK BROWN: Areas that do NOT have at least one provider offering either fixed wireless or wireline service with both a download speed of 3.75 Mbps or faster and an upload speed of 450 Kbps or faster.

IN TAN: Areas that do NOT have at least one provider offering either fixed wireless or wireline service with both a download speed of 5 Mbps or faster and an upload speed of 600 Kbps or faster.



How Coverage Data Are Depicted: All providers, except mobile wireless carriers, provide coverage data including download and upload speeds, along with transfer technologies, on a census block basis. This means a provider indicates coverage over a given census block when a minimum of one customer is serviced within that census block. Mobile wireless carriers are asked to share the same attributes as other providers, but they use their own coverage boundaries to depict their coverage area. Coverage data are collected from the FCC's Form 477 dating from December 30, 2015.

Disclaimer: While this map attempts to highlight areas of the state that have internet access, no guarantee of said coverage can be fully made. The methodology of collecting coverage data, local anomalies, and coverage changes may result in the understatement or overstatement of internet coverage. As a result, the Wisconsin Broadband Office is not liable for inaccuracies or other unusual phenomena in these maps.

*Fixed Internet access includes all landline and fixed wireless services.
Map Drafted: 9/23/2016

Wisconsin Broadband Office, Public Service Commission of Wisconsin

www.link.wisconsin.gov PSCStateBroadbandOffice@wisconsin.gov
610 N. Whitney Way, P.O. Box 7854, Madison, WI 53707-7854



Connecting Wisconsin to the World

LEGISLATIVE COUNCIL MAP REQUEST

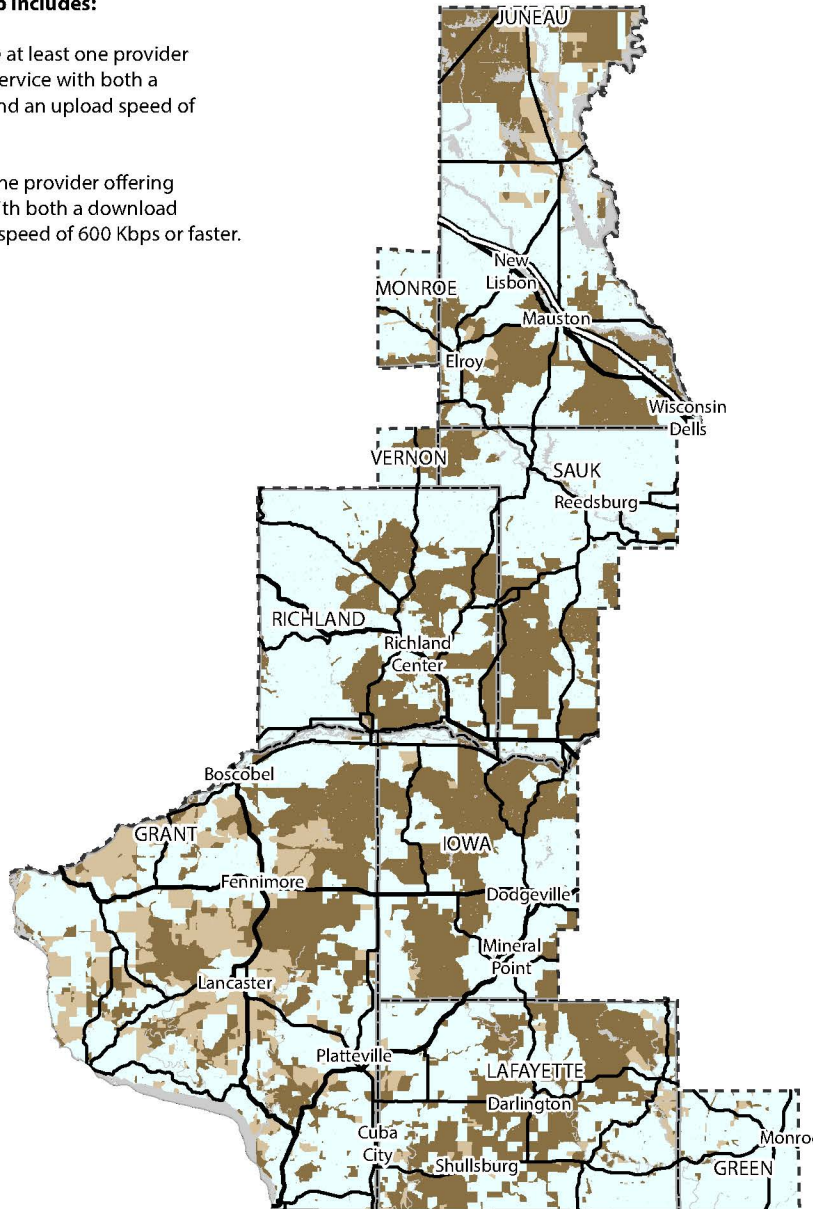
Presented by the Wisconsin Broadband Office

Senate District 17 — Senator Howard Marklein

Per 9.20.2016 council request, this map includes:

IN DARK BROWN: Areas that do NOT have at least one provider offering either fixed wireless or wireline service with both a download speed of 3.75 Mbps or faster and an upload speed of 450 Kbps or faster.

IN TAN: Areas that do NOT have at least one provider offering either fixed wireless or wireline service with both a download speed of 5 Mbps or faster and an upload speed of 600 Kbps or faster.



Internet Speed Availability

Maximum Available Fixed Internet* Speeds

- Download Speed / Upload Speed
- Slower than 3.5 Mbps / .45 Mbps
 - Slower than 5 Mbps / .6 Mbps
 - Faster than or equal to 5 Mbps / .6 Mbps

0 5 10 20 Miles



How Coverage Data Are Depicted: All providers, except mobile wireless carriers, provide coverage data including download and upload speeds, along with transfer technologies, on a census block basis. This means a provider indicates coverage over a given census block when a minimum of one customer is serviced within that census block. Mobile wireless carriers are asked to share the same attributes as other providers, but they use their own coverage boundaries to depict their coverage area. Coverage data are collected from the FCC's Form 477 dating from December 30, 2015.

Disclaimer: While this map attempts to highlight areas of the state that have internet access, no guarantee of said coverage can be fully made. The methodology of collecting coverage data, local anomalies, and coverage changes may result in the understatement or overstatement of internet coverage. As a result, the Wisconsin Broadband Office is not liable for inaccuracies or other unusual phenomena in these maps.

*Fixed Internet access includes all landline and fixed wireless services. Map Drafted: 9/23/2016



Wisconsin Broadband Office, Public Service Commission of Wisconsin

www.link.wisconsin.gov PSCStateBroadbandOffice@wisconsin.gov
610 N. Whitney Way, P.O. Box 7854, Madison, WI 53707-7854

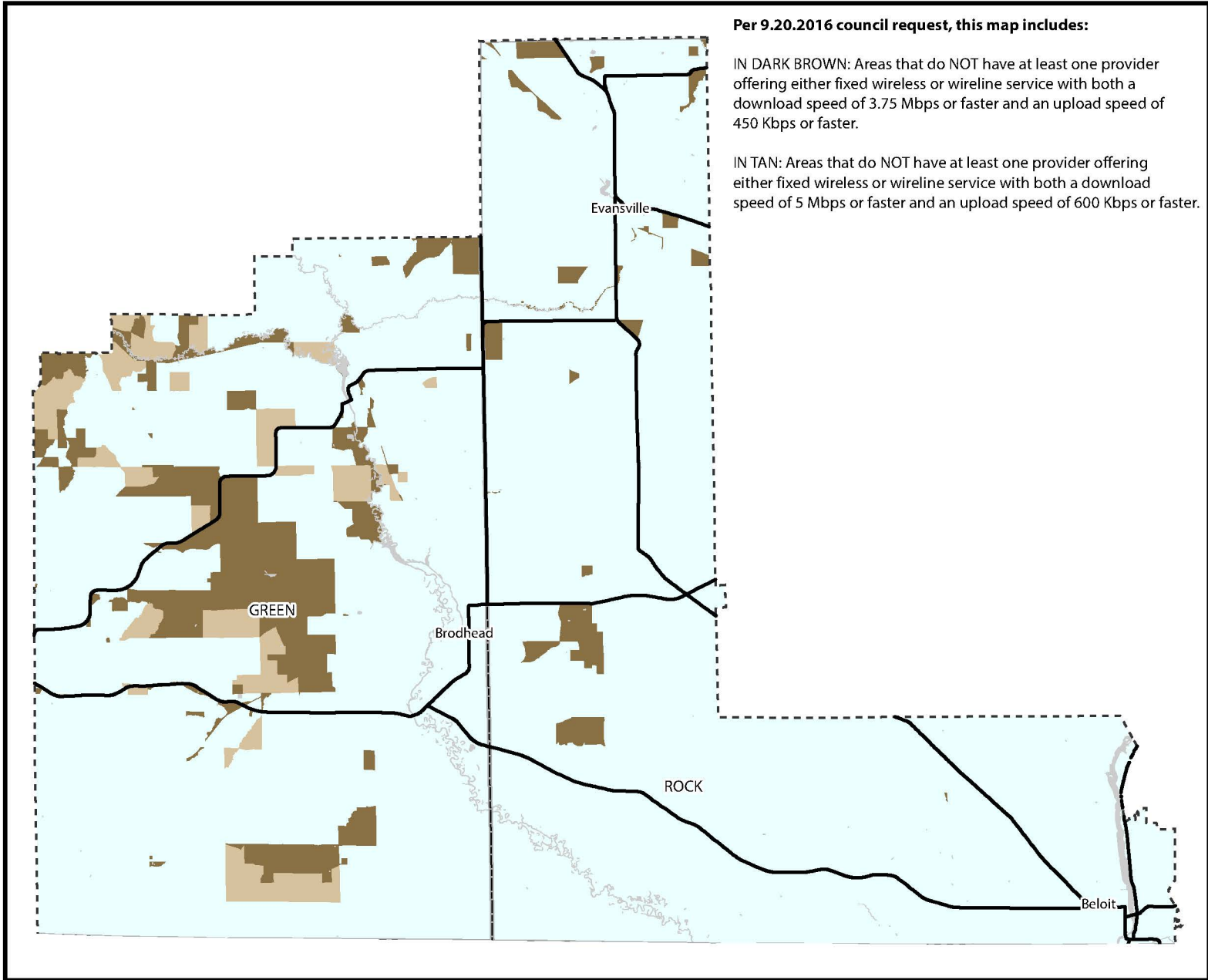


Connecting Wisconsin to the World

LEGISLATIVE COUNCIL MAP REQUEST

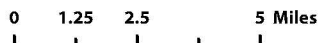
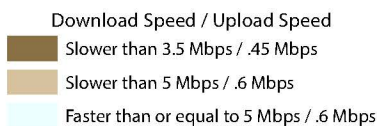
Presented by the Wisconsin Broadband Office

Assembly District 45 — Representative Mark Spreitzer



Internet Speed Availability

Maximum Available Fixed Internet* Speeds



How Coverage Data Are Depicted: All providers, except mobile wireless carriers, provide coverage data including download and upload speeds, along with transfer technologies, on a census block basis. This means a provider indicates coverage over a given census block when a minimum of one customer is serviced within that census block. Mobile wireless carriers are asked to share the same attributes as other providers, but they use their own coverage boundaries to depict their coverage area. Coverage data are collected from the FCC's Form 477 dating from December 30, 2015.

Disclaimer: While this map attempts to highlight areas of the state that have internet access, no guarantee of said coverage can be fully made. The methodology of collecting coverage data, local anomalies, and coverage changes may result in the understatement or overstatement of internet coverage. As a result, the Wisconsin Broadband Office is not liable for inaccuracies or other unusual phenomena in these maps.

*Fixed Internet access includes all landline and fixed wireless services. Map Drafted: 9/23/2016



Wisconsin Broadband Office, Public Service Commission of Wisconsin

www.link.wisconsin.gov PSCStateBroadbandOffice@wisconsin.gov
610 N. Whitney Way, P.O. Box 7854, Madison, WI 53707-7854

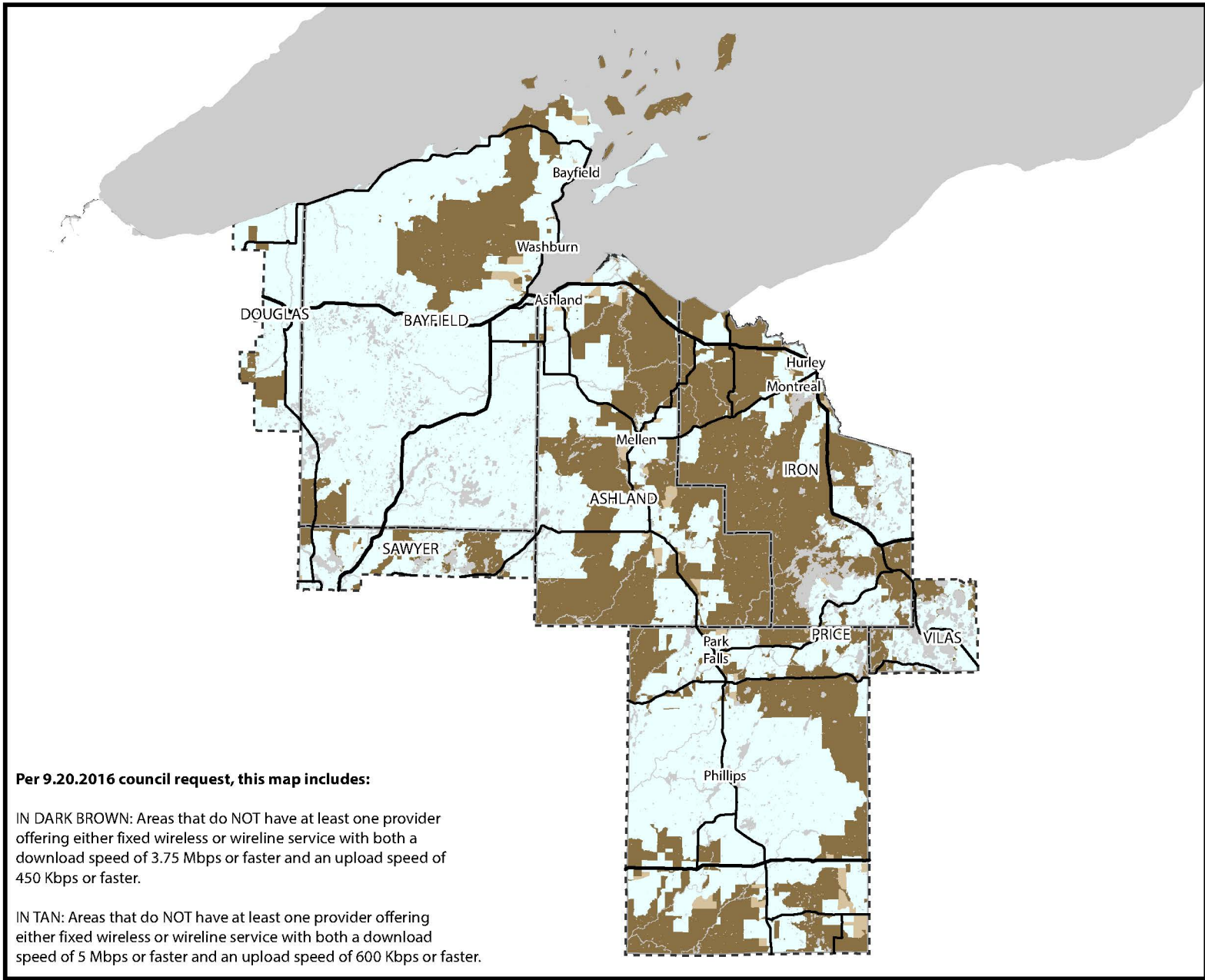


Connecting Wisconsin to the World

LEGISLATIVE COUNCIL MAP REQUEST

Presented by the Wisconsin Broadband Office

Assembly District 74 — Representative Beth Meyers



Internet Speed Availability

Maximum Available Fixed Internet* Speeds

- Download Speed / Upload Speed
- Slower than 3.5 Mbps / .45 Mbps
 - Slower than 5 Mbps / .6 Mbps
 - Faster than or equal to 5 Mbps / .6 Mbps

0 5 10 20 Miles



How Coverage Data Are Depicted: All providers, except mobile wireless carriers, provide coverage data including download and upload speeds, along with transfer technologies, on a census block basis. This means a provider indicates coverage over a given census block when a minimum of one customer is serviced within that census block. Mobile wireless carriers are asked to share the same attributes as other providers, but they use their own coverage boundaries to depict their coverage area. Coverage data are collected from the FCC's Form 477 dating from December 30, 2015.

Disclaimer: While this map attempts to highlight areas of the state that have internet access, no guarantee of said coverage can be fully made. The methodology of collecting coverage data, local anomalies, and coverage changes may result in the understatement or overstatement of internet coverage. As a result, the Wisconsin Broadband Office is not liable for inaccuracies or other unusual phenomena in these maps.

*Fixed Internet access includes all landline and fixed wireless services. Map Drafted: 9/23/2016



Wisconsin Broadband Office, Public Service Commission of Wisconsin

www.link.wisconsin.gov PSCStateBroadbandOffice@wisconsin.gov
610 N. Whitney Way, P.O. Box 7854, Madison, WI 53707-7854

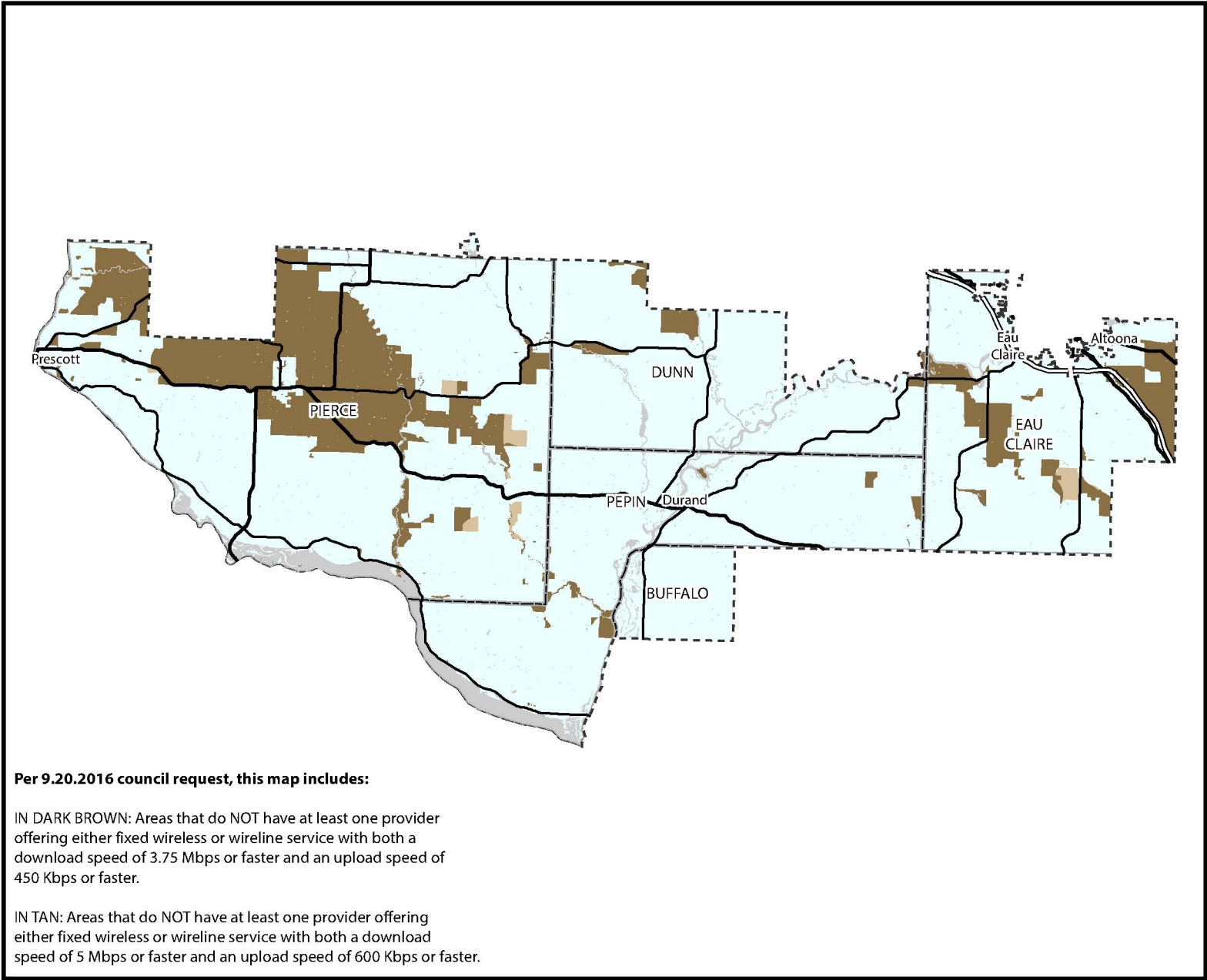


Connecting Wisconsin to the World

LEGISLATIVE COUNCIL MAP REQUEST

Presented by the Wisconsin Broadband Office

Assembly District 93 — Representative Warren Petryk



Internet Speed Availability

Maximum Available Fixed Internet* Speeds

- Download Speed / Upload Speed
- Slower than 3.5 Mbps / .45 Mbps
 - Slower than 5 Mbps / .6 Mbps
 - Faster than or equal to 5 Mbps / .6 Mbps

0 3 6 12 Miles



How Coverage Data Are Depicted: All providers, except mobile wireless carriers, provide coverage data including download and upload speeds, along with transfer technologies, on a census block basis. This means a provider indicates coverage over a given census block when a minimum of one customer is serviced within that census block. Mobile wireless carriers are asked to share the same attributes as other providers, but they use their own coverage boundaries to depict their coverage area. Coverage data are collected from the FCC's Form 477 dating from December 30, 2015.

Disclaimer: While this map attempts to highlight areas of the state that have internet access, no guarantee of said coverage can be fully made. The methodology of collecting coverage data, local anomalies, and coverage changes may result in the understatement or overstatement of internet coverage. As a result, the Wisconsin Broadband Office is not liable for inaccuracies or other unusual phenomena in these maps.

*Fixed Internet access includes all landline and fixed wireless services. Map Drafted: 9/23/2016



Wisconsin Broadband Office, Public Service Commission of Wisconsin

www.link.wisconsin.gov PSCStateBroadbandOffice@wisconsin.gov
610 N. Whitney Way, P.O. Box 7854, Madison, WI 53707-7854

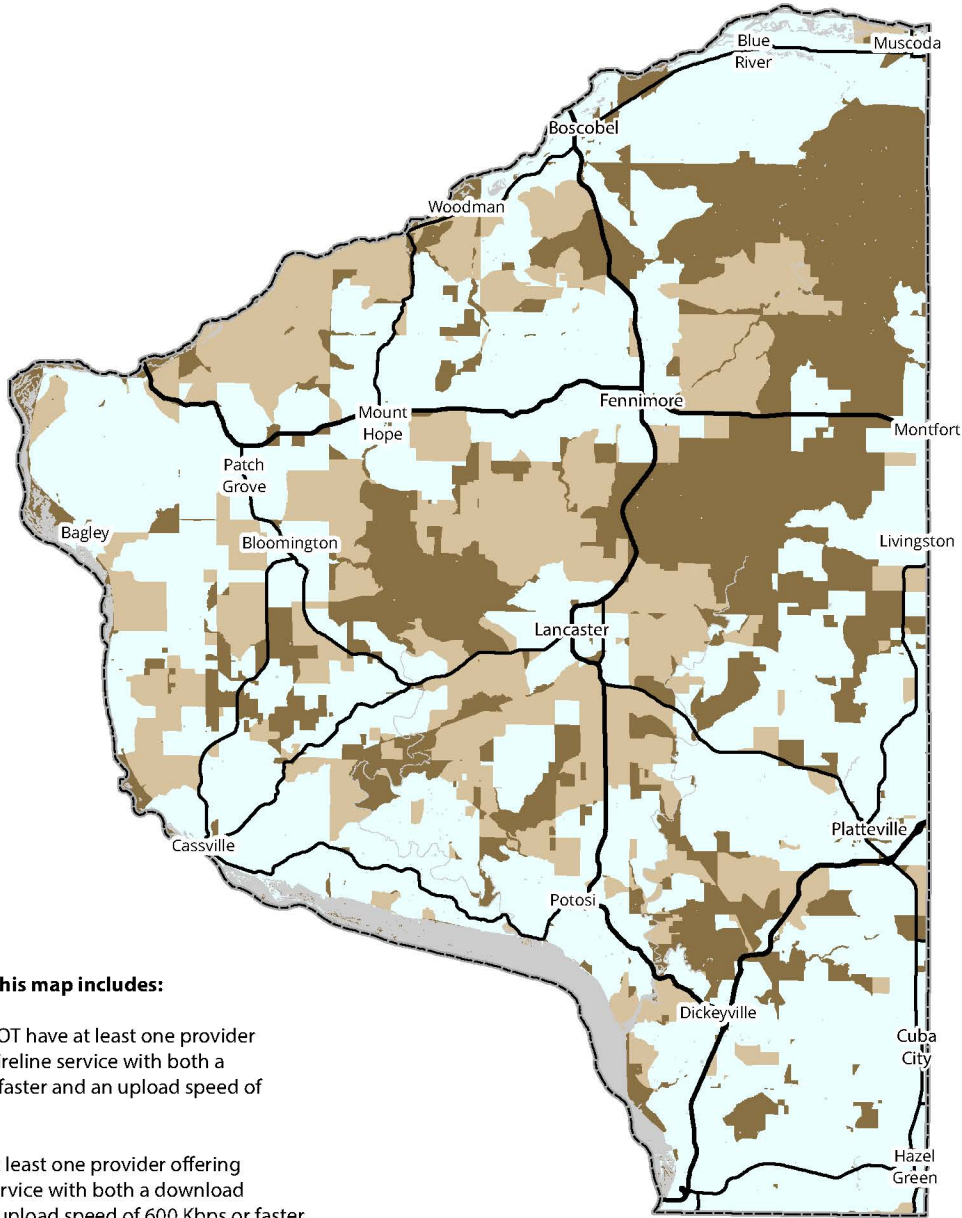


Connecting Wisconsin to the World

LEGISLATIVE COUNCIL MAP REQUEST

Presented by the Wisconsin Broadband Office

Grant County



Per 9.20.2016 council request, this map includes:

IN DARK BROWN: Areas that do NOT have at least one provider offering either fixed wireless or wireline service with both a download speed of 3.75 Mbps or faster and an upload speed of 450 Kbps or faster.

IN TAN: Areas that do NOT have at least one provider offering either fixed wireless or wireline service with both a download speed of 5 Mbps or faster and an upload speed of 600 Kbps or faster.



Internet Speed Availability

Maximum Available Fixed Internet* Speeds

Download Speed / Upload Speed

- Slower than 3.5 Mbps / .45 Mbps
- Slower than 5 Mbps / .6 Mbps
- Faster than or equal to 5 Mbps / .6 Mbps



How Coverage Data Are Depicted: All providers, except mobile wireless carriers, provide coverage data including download and upload speeds, along with transfer technologies, on a census block basis. This means a provider indicates coverage over a given census block when a minimum of one customer is serviced within that census block. Mobile wireless carriers are asked to share the same attributes as other providers, but they use their own coverage boundaries to depict their coverage area. Coverage data are collected from the FCC's Form 477 dating from December 30, 2015.

Disclaimer: While this map attempts to highlight areas of the state that have internet access, no guarantee of said coverage can be fully made. The methodology of collecting coverage data, local anomalies, and coverage changes may result in the understatement or overstatement of internet coverage. As a result, the Wisconsin Broadband Office is not liable for inaccuracies or other unusual phenomena in these maps.

*Fixed Internet access includes all landline and fixed wireless services. Map Drafted: 9/23/2016



Wisconsin Broadband Office, Public Service Commission of Wisconsin

www.link.wisconsin.gov PSCStateBroadbandOffice@wisconsin.gov
610 N. Whitney Way, P.O. Box 7854, Madison, WI 53707-7854

