

1999 DRAFTING REQUEST

Assembly Substitute Amendment (ASA-AB149)

Received: **04/23/99**

Received By: **yacketa**

Wanted: **As time permits**

Identical to LRB:

For: **Lorraine Seratti (608) 266-3780**

By/Representing: **Tim**

This file may be shown to any legislator: **NO**

Drafter: **yacketa**

May Contact:

Alt. Drafters:

Subject: **Public Assistance - misc**

Extra Copies:

Pre Topic:

No specific pre topic given

Topic:

Community aides funding

Instructions:

See Attached

Drafting History:

<u>Vers.</u>	<u>Drafted</u>	<u>Reviewed</u>	<u>Typed</u>	<u>Proofed</u>	<u>Submitted</u>	<u>Jacketed</u>	<u>Required</u>
/?	yacketa 04/23/99	ygeller 04/23/99		_____			
/1			martykr 04/27/99	_____	lrb_docadmin 04/27/99	lrb_docadmin 04/27/99	

FE Sent For:

<END>

1999 DRAFTING REQUEST

Assembly Substitute Amendment (ASA-AB149)

Received: 04/23/99

Received By: yacketa

Wanted: As time permits

Identical to LRB:

For: Lorraine Seratti (608) 266-3780

By/Representing: Tim

This file may be shown to any legislator: NO

Drafter: yacketa

May Contact:

Alt. Drafters:

Subject: Public Assistance - misc

Extra Copies:

Pre Topic:

No specific pre topic given

Topic:

Community aides funding

Instructions:

See Attached

Drafting History:

<u>Vers.</u>	<u>Drafted</u>	<u>Reviewed</u>	<u>Typed</u>	<u>Proofed</u>	<u>Submitted</u>	<u>Jacketed</u>	<u>Required</u>
1?	yacketa	1 4/23 jlg	dm 4/26	dm 4/26			

FE Sent For:

<END>

Yacker, Tina

From: Fiocchi, Timothy
Sent: Thursday, April 22, 1999 4:40 PM
To: Yacker, Tina
Subject: Substitute Amendment to AB 149

Tina,
Representative Seratti would like a substitute amendment drafted for AB 149. Please change the bill so that the 9.89% matching requirement is lowered to 5% for counties in which 92% or more of the land is property tax exempt.

Thanks,

Tim

SOON

1999 - 2000 LEGISLATURE

50051 / 1

LRB+15141

TAY:jlg:jf

Stays Redraft not
m

ASA
to

1999 ASSEMBLY BILL 149

March 4, 1999 - Introduced by Representatives ~~SERAFI, HUTCHISON, SYKORA,~~
~~ALBERS and TURNER,~~ cosponsored by Senator DRZEWIECKI. Referred to Joint
committee on Finance.

Regen

- 1 AN ACT to amend 46.268 (3), 46.495 (1) (d), 51.423 (2) and 51.45 (5) (c); and to
- 2 create 46.268 (4), 46.495 (1) (db), 51.423 (2m) and 51.45 (5) (cm) of the statutes;
- 3 relating to: county share of community aids funding.

Analysis by the Legislative Reference Bureau

~~Under current law, counties provide social services for low-income persons and services for persons with needs related to mental illness, substance abuse or developmental disabilities. Currently, federal and state funds, known as community aids funds, are available to counties for the provision of those services. Counties that receive community aids funds must provide matching funds equal to 9.89% of the cost of the service, in the case of certain community services, or of 9.89% of the funding received, in the case of certain other social services.~~

~~This bill lowers the matching requirement to 5% of the cost of services in counties with a poverty rate exceeding 20% in which at least 92% of the land is exempt.~~

~~For further information see the **state and local** fiscal estimate, which will be printed as an appendix to this bill.~~

The people of the state of Wisconsin, represented in senate and assembly, do enact as follows:

- 4 SECTION 1. 46.268 (3) of the statutes is amended to read:

ASSEMBLY BILL 149

SECTION 1

1 46.268 (3) County matching funds are required for allocations under sub. (1).

2 A Except as provided in sub. (4), a county's required match equals 9.89% of the cost
3 of community service.

4 SECTION 2. 46.268 (4) of the statutes is created to read:

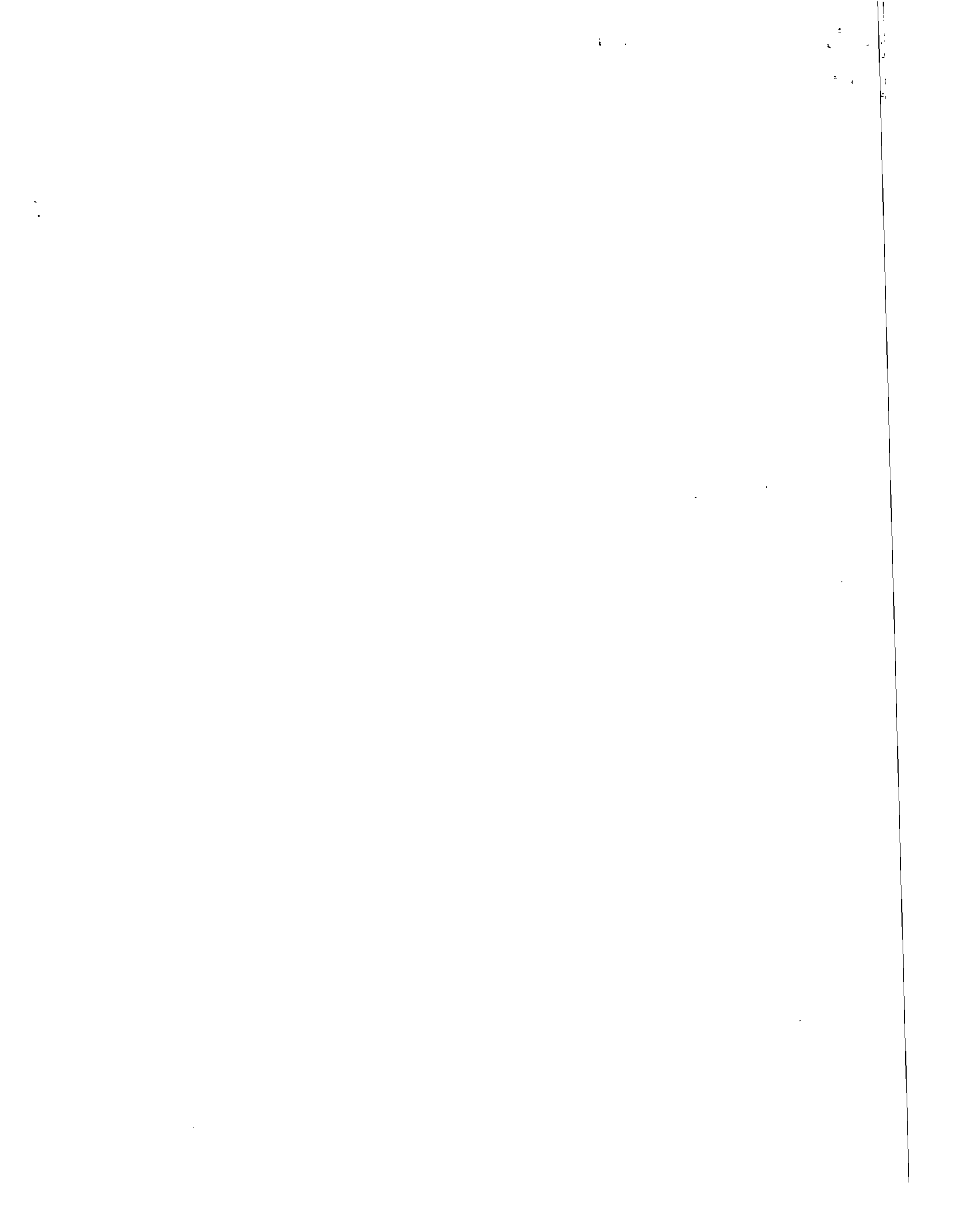
5 46.268 (4) In a county ~~with a poverty rate exceeding 30%~~, the county's required
6 match under sub. (3) equals 5% of the cost of community service.

7 SECTION 3. 46.495 (1) (d) of the statutes is amended to read:

8 46.495 (1) (d) From the appropriations under s. 20.435 (3) (o) and (7) (b), (kw)
9 and (o), the department shall distribute the funding for social services, including
10 funding for foster care or treatment foster care of a child on whose behalf aid is
11 received under s. 46.261, to county departments under ss. 46.215, 46.22 and 46.23
12 as provided under s. 46.40. County matching funds are required for the distributions
13 under s. 46.40 (2) and (8). ~~Each~~ Except as provided in par. (db), each county's
14 required match for a year equals 9.89% of the total of the county's distributions for
15 that year for which matching funds are required plus the amount the county was
16 required by s. 46.26 (2) (c), 1985 stats., to spend for juvenile delinquency-related
17 services from its distribution for 1987. Matching funds may be from county tax
18 levies, federal and state revenue sharing funds or private donations to the county
19 that meet the requirements specified in s. 51.423 (5). Private donations may not
20 exceed 25% of the total county match. If the county match is less than the amount
21 required to generate the full amount of state and federal funds distributed for this
22 period, the decrease in the amount of state and federal funds equals the difference
23 between the required and the actual amount of county matching funds.

24 SECTION 4. 46.495 (1) (db) of the statutes is created to read:

*in which at least 92%
of the land is exempt from
taxation under ch. 70*



In which at least 92% of the land is exempt from taxation under ch. 700

1 46.495 (1) (db) In a county ~~with a poverty rate exceeding 19%~~^{with a poverty rate exceeding 19%}, the county's
2 required match under par. (d) equals 5% of the cost of the social services for the year
3 for which matching funds are required.

4 **SECTION 5.** 51.423 (2) of the statutes is amended to read:

5 51.423 (2) From the appropriations under s. 20.435 (3) (o) and (7) (b), (kw) and
6 (o), the department shall distribute the funding for services provided or purchased
7 by county departments under s. 46.23, 51.42 or 51.437 to such county departments
8 as provided under s. 46.40. County matching funds are required for the distributions
9 under s. 46.40 (2). ~~Each~~ Except as provided in sub. (2m), each county's required
10 match for a year equals 9.89% of the total of the county's distributions for that year
11 for which matching funds are required plus the amount the county was required by
12 s. 46.26 (2) (c), 1985 stats., to spend for juvenile delinquency-related services from
13 its distribution for 1987. Matching funds may be from county tax levies, federal and
14 state revenue sharing funds or private donations to the counties that meet the
15 requirements specified in sub. (5). Private donations may not exceed 25% of the total
16 county match. If the county match is less than the amount required to generate the
17 full amount of state and federal funds distributed for this period, the decrease in the
18 amount of state and federal funds equals the difference between the required and the
19 actual amount of county matching funds.

20 **SECTION 6.** 51.423 (2m) of the statutes is created to read:

21 51.423 (2m) In a county ~~with a poverty rate exceeding 19%~~^{with a poverty rate exceeding 19%}, the county's
22 required match under sub. (2) equals 5% of the cost of the services provided or
23 purchased during year for which matching funds are required.

24 **SECTION 7.** 51.45 (5) (c) of the statutes is amended to read:

