

2001 DRAFTING REQUEST

Assembly Amendment (AA-AB711)

Received: 01/17/2002

Received By: **rmarchan**

Wanted: **As time permits**

Identical to LRB:

For: **Tony Staskunas (608) 266-0620**

By/Representing: **Adrienne Ramirez**

This file may be shown to any legislator: **NO**

Drafter: **rmarchan**

May Contact:

Addl. Drafters:

Subject: **Redistricting**

Extra Copies:

Submit via email: **NO**

Pre Topic:

No specific pre topic given

Topic:

Congressional redistricting

Instructions:

See Attached
removes block level split in West Allis

Drafting History:

<u>Vers.</u>	<u>Drafted</u>	<u>Reviewed</u>	<u>Typed</u>	<u>Proofed</u>	<u>Submitted</u>	<u>Jacketed</u>	<u>Required</u>
/P1	rmarchan 01/15/2002	csicilia 01/21/2002		_____			
/1			haugeca 01/22/2002	_____	lrb_docadmin 01/22/2002	lrb_docadmin 01/22/2002	

FE Sent For:

<END>

2001 DRAFTING REQUEST

Assembly Amendment (AA-AB711)

Received: 01/17/2002

Received By: rmarchan

Wanted: As time permits

Identical to LRB:

For: Tony Staskunas (608) 266-0620

By/Representing: Adrienne Ramirez

This file may be shown to any legislator: NO

Drafter: rmarchan

May Contact:

Addl. Drafters:

Subject: **Redistricting**

Extra Copies:

RJM

Submit via email: NO

Pre Topic:

No specific pre topic given

*Pete Cannon
says this
one should
be jacketed.*

Topic:

Congressional redistricting

Instructions:

See Attached
removes block level split in West Allis

Drafting History:

<u>Vers.</u>	<u>Drafted</u>	<u>Reviewed</u>	<u>Typed</u>	<u>Proofed</u>	<u>Submitted</u>	<u>Jacketed</u>	<u>Required</u>
/P1	rmarchan 01/15/2002	<i>1 cjs 1/20 02</i>	<i>CH 1-21-02</i>	<i>CH 1-21-02</i>			

FE Sent For:

<END>

2001 DRAFTING REQUEST

Assembly Amendment (AA-AB711)

Received: 01/15/2002

Received By: rmarchan

Wanted: As time permits

Identical to LRB:

For: Legislative Reference Bureau

Staskunas

By/Representing:

This file may be shown to any legislator: NO

Drafter: rmarchan

May Contact:

Addl. Drafters:

Subject: **Redistricting**

Extra Copies:

Submit via email: NO

Pre Topic:

No specific pre topic given

Topic:

Congressional redistricting

C020117c

Instructions:

See Attached

Drafting History:

<u>Vers.</u>	<u>Drafted</u>	<u>Reviewed</u>	<u>Typed</u>	<u>Proofed</u>	<u>Submitted</u>	<u>Jacketed</u>	<u>Required</u>
/P1	rmarchan 01/15/2002			== ==			

FE Sent For:

<END>

Cannon, Peter

From: Ramirez, Adrienne
Sent: Thursday, January 17, 2002 2:47 PM
To: Cannon, Peter
Subject: Amendments for AB 711

Pete-

Thank you for the map, it was very useful. I currently have only two amendments for you to draft. After I ran the numbers on Tony's other amendments they didn't quite add up.

Also, Tony was wondering how much of a difference in population congressional districts can have by law.

The following are the two amendments.

1. Maintains the current split of the City of West Allis with the exception of Ward 27, place the entire ward 27 into the 4th CD rather than splitting it by census tracks.

I do not have the census tracking population numbers available to me.

[REDACTED]

[REDACTED]

Thank you for your help.

Adrienne Ramirez
Office of Rep. Staskunas
6-0620

Staskunas (hasen on 2002)
Ward level
Staskunas
is AB 711
can't reach

2001

Date (time) needed

9AM 1/22

LRBa 1086, 1

AMENDMENT

PC: _____

See form AMENDMENTS — COMPONENTS & ITEMS.

S A AMENDMENT

TO S A AMENDMENT _____ (LRBa /),

TO S A SUBSTITUTE AMENDMENT _____ (LRBs /),

TO 2001 SB SJR SR AB AJR AR 711 (LRB- 4410/1)

Like this gis

At the locations indicated, amend the _____ as follows:

(fill ONLY if "engrossed" or "as shown by")

#. Page...7, line...22

delete "and"

#. Page...7, line...22

insert after "12" and 27

#. Page...7, line...22

delete "and that part" to end of line

#. Page...7, line...23

delete entire line

#. Page...8, line...22

delete ~~to~~ everything after "33" through page 9, line 2

AB-711

Population Statistics

This Amendment

District	Pop.	Dev.	Pct. Dev.	Minority Pop.		Pop.	Dev.	Pct. Dev.	Minority Pop.	
				Hispan.	Other				Hispan.	Other

4	670,458	-1	0.00%	75,285	257,364	671,877	1418	0.21%	75,341	257,401
5	670,458	-1	0.00%	14,910	25,630	669,039	-1420	-0.21%	14,854	25,593
mean deviation				persons	percent	mean deviation			persons	percent
Largest Positive Deviation				2	0.00%	Largest Positive Deviation			356	0.05%
Largest Negative deviation				3	0.00%	Largest Negative deviation			1,418	0.21%
Overall range in deviation				5	0.00%	Overall range in deviation			-1420	-0.21%
									2,849	0.42%

These Stats

~~For~~ a check

sample
for format

POPULATION STATISTICS

LRB-4410/1

THIS AMENDMENT

District	Pop.	Dev.	Pct. Dev.	Minority Pop.		Pop.	Dev.	Pct. Dev.	Minority Pop.	
				Hispan.	Other				Hispan.	Other
Cong. Dist. 3	670,461	2	0.00	6,194	19,917	670,459	0	0.00	6,189	19,918
Cong. Dist. 7	670,459	0	0.00	5,813	27,094	670,461	2	0.00	5,818	27,093

	Persons	Percent		Persons	Percent
Mean Deviation:	2	0.00	Mean Deviation:	2	0.00
Largest Positive Deviation:	3	0.00	Largest Positive Deviation:	3	0.00
Largest Negative Deviation:	-2	-0.00	Largest Negative Deviation:	-2	-0.00
Overall Range in Deviation:	± 5	± 0.00	Overall Rangc in Deviation:	± 5	± 0.00



State of Wisconsin
2001 - 2002 LEGISLATURE

TUE 1/22 9 AM

LRBa1086/

PC

cjs

1

PRELIMINARY DRAFT - NOT READY FOR INTRODUCTION
ASSEMBLY AMENDMENT,
TO 2001 ASSEMBLY BILL 711

attachment
inserts
d note

1 At the locations indicated, amend the bill as follows:

2

(END)

¶ #. Page 7, line 22: delete lines 22 and 23 and substitute "11, 12, and 27."

¶ #. Page 8, line 22: delete the material beginning with "and that part" and ending with "3004" on page 9, line 2.

2001 - 2002 LEGISLATURE
STATISTICS AND MAPS

Appendix to: LRBa1086/1

PC: /:....

Cjs

1

INSERT
A

LPS:
 I have marked the current content of this attachment for deletion. However, I want to use this attachment as a container for the insert material because it is electronically linked to the bill in a special way.

POPULATION STATISTICS

<u>District</u>	<u>Population</u>	<u>Deviation</u>	<u>Pct. Dev.</u>	<u>Minority Population</u>	
				<u>Hispanic</u>	<u>Other</u>
Cong. Dist. 1	670,172	-287	-0.04	37,888	46,520
Cong. Dist. 2	670,782	323	0.05	22,644	51,078
Cong. Dist. 3	670,606	147	0.02	6,193	19,917
Cong. Dist. 4	670,106	-353	-0.05	75,277	257,358
Cong. Dist. 5	670,675	216	0.03	14,914	25,634
Cong. Dist. 6	671,482	1,023	0.15	15,572	24,772
Cong. Dist. 7	670,159	-300	-0.04	5,823	27,101
Cong. Dist. 8	669,693	-766	-0.11	14,610	36,744
TOTAL	5,363,675			192,921	489,124

CONGRESSIONAL

	Persons	Percent
Mean Deviation:	427	0.06
Largest Positive Deviation:	1,023	0.15
Largest Negative Deviation:	-766	-0.11
Overall Range in Deviation:	± 1,789	± 0.27

CONGRESSIONAL

Persons Percent

CONGRESSIONAL

Persons Percent

CONGRESSIONAL

Persons Percent

CONGRESSIONAL

Persons Percent

CONGRESSIONAL

Persons Percent

CONGRESSIONAL

Persons Percent

CONGRESSIONAL Persons Percent

CONGRESSIONAL Persons Percent

CONGRESSIONAL Persons Percent

CONGRESSIONAL Persons Percent

CONGRESSIONAL Persons Percent

Mean Deviation: 427 0.06
Largest Positive Deviation: 1,023 0.15
Largest Negative Deviation: -766 -0.11
Overall Range in Deviation: ± 1,789 ± 0.27

CONGRESSIONAL Persons Percent

CONGRESSIONAL Persons Percent

CONGRESSIONAL Persons Percent

CONGRESSIONAL Persons Percent

CONGRESSIONAL Persons Percent

CONGRESSIONAL Persons Percent

CONGRESSIONAL

Persons Percent

CONGRESSIONAL

Persons Percent

CONGRESSIONAL

Persons Percent

CONGRESSIONAL

Persons Percent

CONGRESSIONAL

Persons Percent

Mean Deviation: 536 0.08

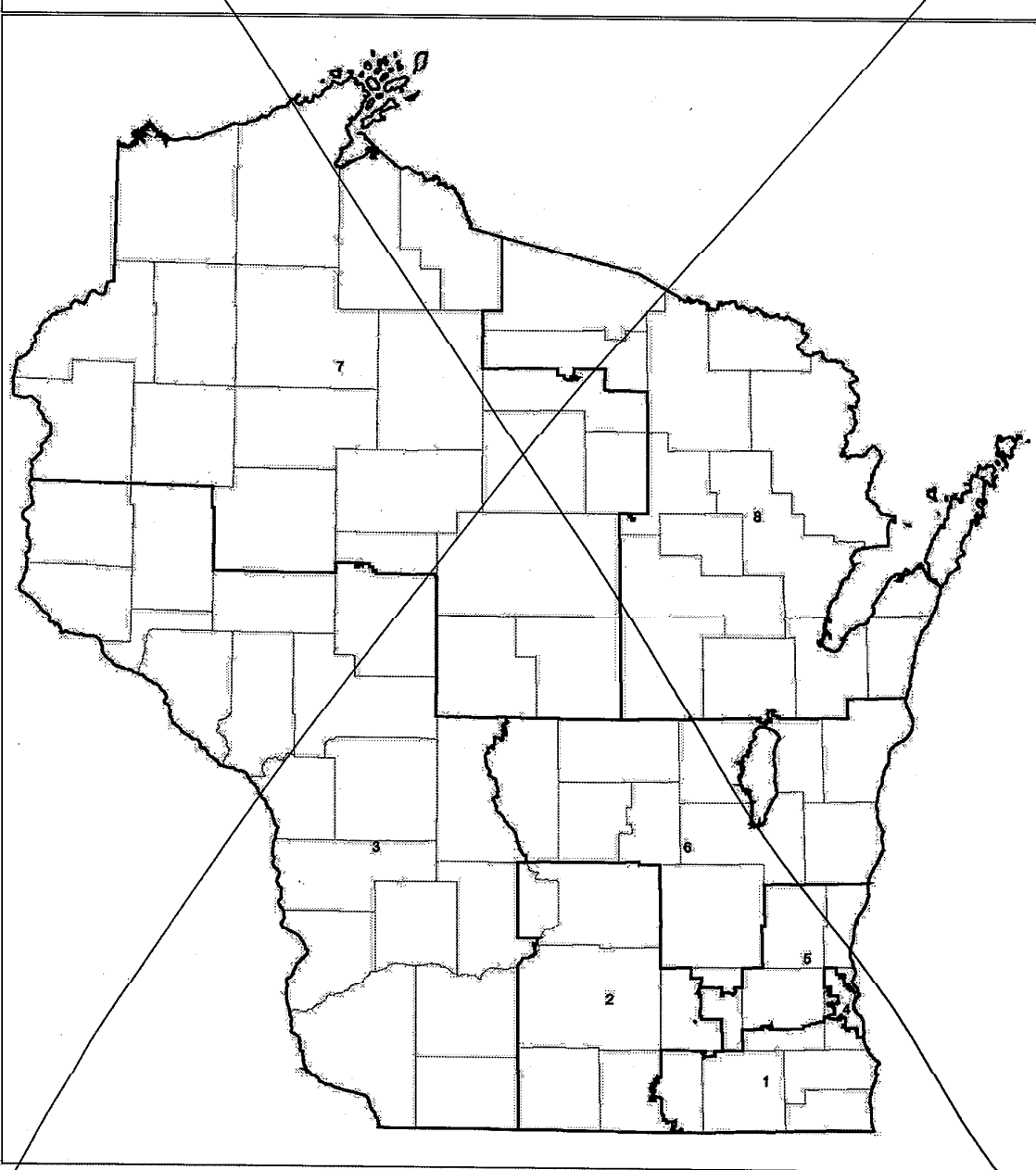
Largest Positive Deviation: 1,418 0.21

Largest Negative Deviation: -1,555 -0.23

Overall Range in Deviation: ± 2,973 ± 0.44

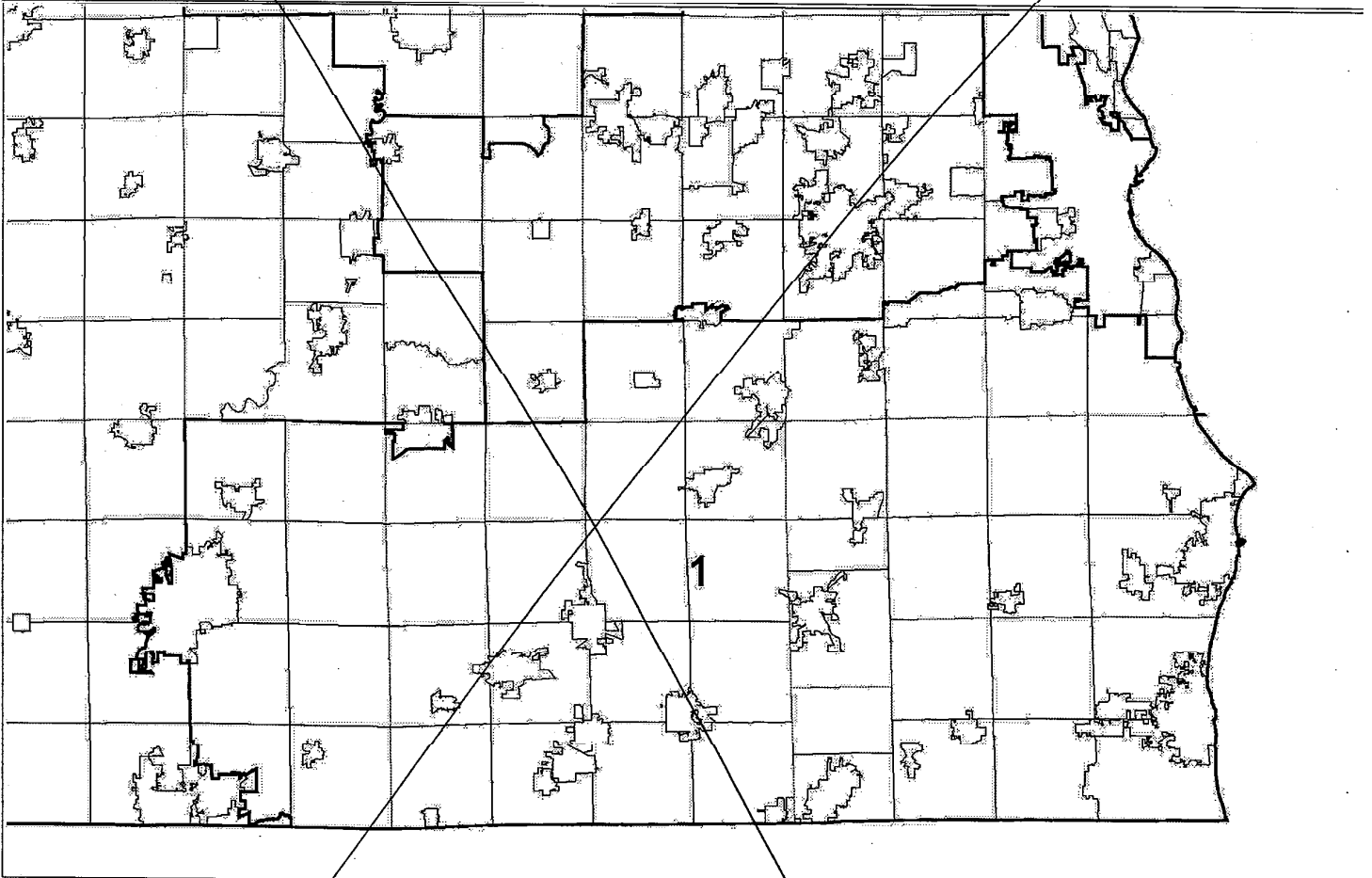
STATE CONGRESSIONAL DISTRICTS

 Plan
 Counties



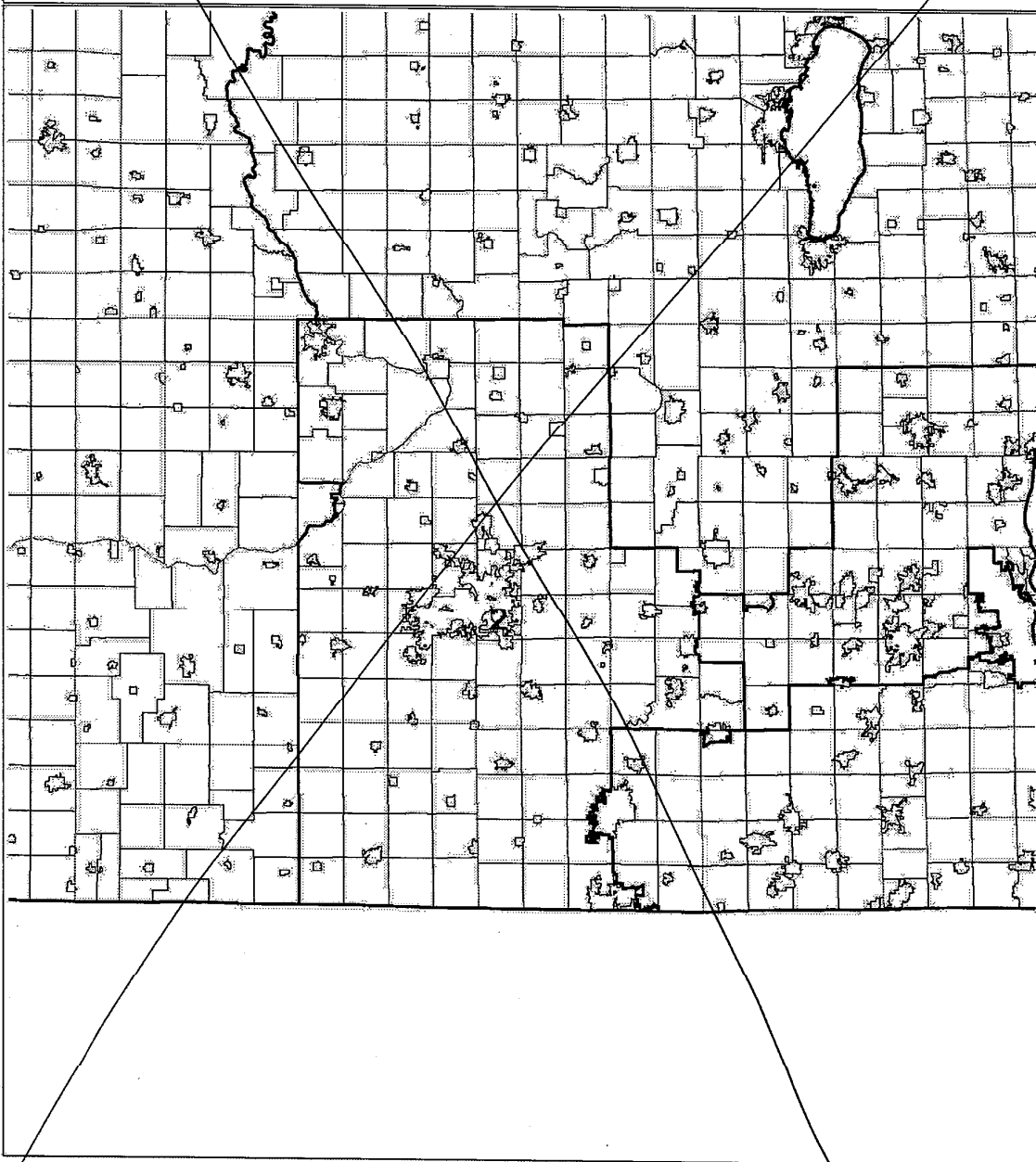
CONGRESSIONAL DISTRICT 1

-  Plan
-  Counties
-  Municipalities



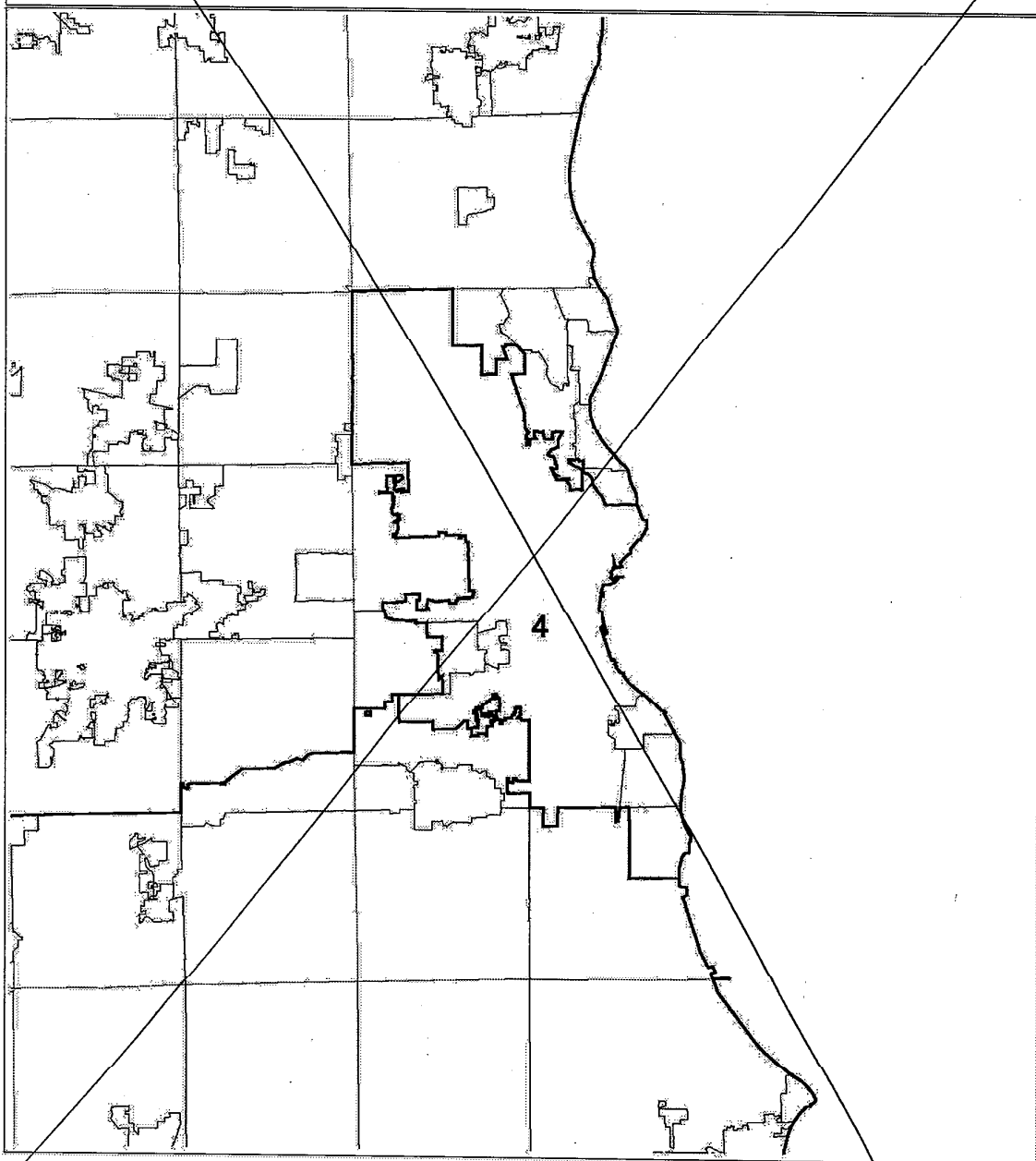
CONGRESSIONAL DISTRICT 2

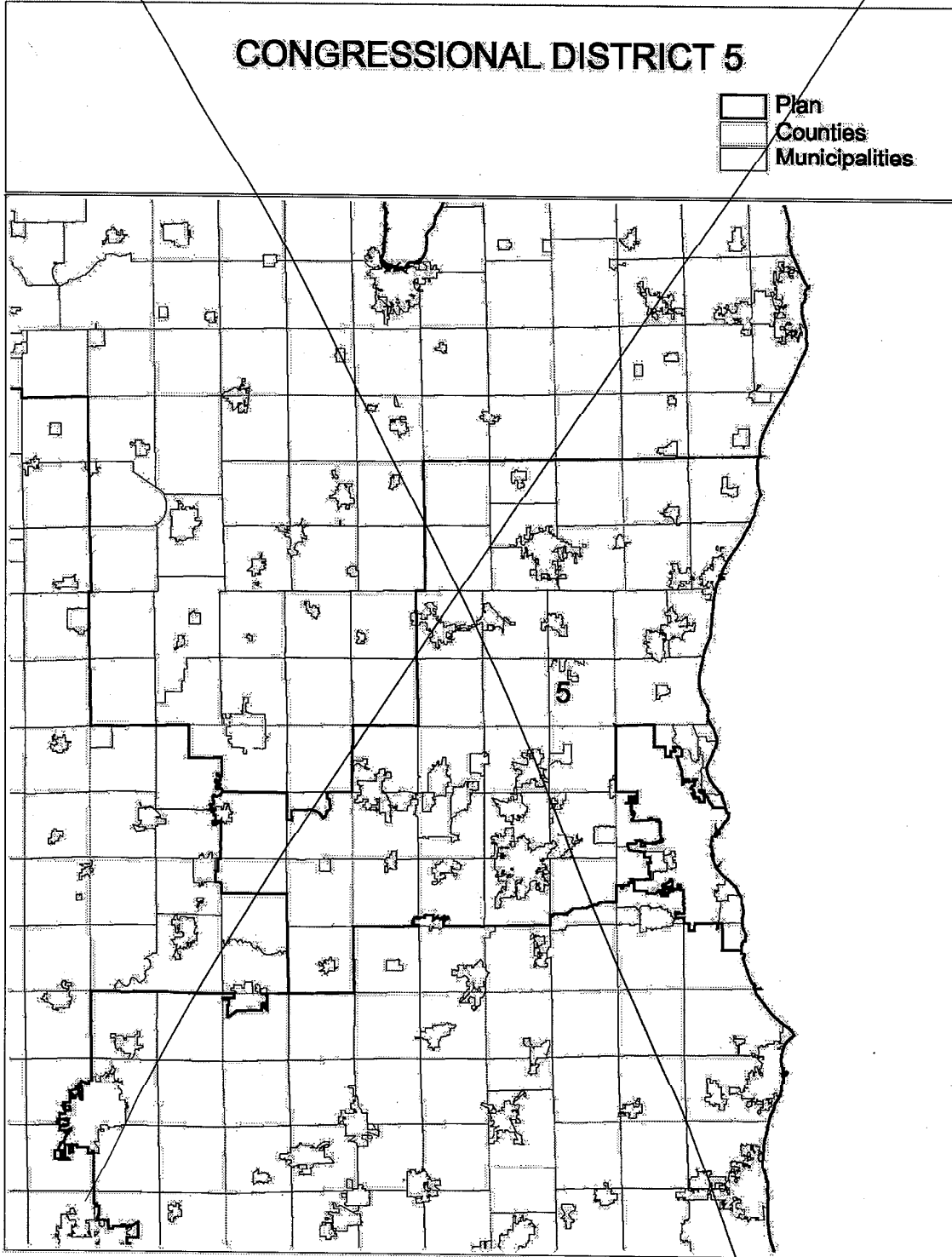
-  Plan
-  Counties
-  Municipalities



CONGRESSIONAL DISTRICT 4

-  Plan
-  Counties
-  Municipalities





INSERT A

POPULATION STATISTICS

AB-711

LRB-4410/1

THIS AMENDMENT

District	Pop.	Dev.	Pct. Dev.	Minority Pop.	
				Hispan.	Other
Cong. Dist. 3	670,461	2	0.00	6,194	19,917
Cong. Dist. 0	670,459	0	0.00	5,813	27,094

Pop.	Dev.	Pct. Dev.	Minority Pop.	
			Hispan.	Other
670,459	0	0.00	6,189	19,918
670,461	2	0.00	5,818	27,093

4
5

	Persons	Percent
Mean Deviation:	2	0.00
Largest Positive Deviation:	3	0.00
Largest Negative Deviation:	-2	-0.00
Overall Range in Deviation:	± 5	± 0.00

	Persons	Percent
Mean Deviation:	2	0.00
Largest Positive Deviation:	3	0.00
Largest Negative Deviation:	-2	-0.00
Overall Range in Deviation:	± 5	± 0.00

keep signs
keep signs

670,458	-1	-0.00	75,285	257,364
670,458	-1	-0.00	14,910	25,630

356
1,418
1,420
2,838

0.05
0.21
0.21
0.42

671,877	1,418	0.21	75,341	257,401
669,039	-1,420	-0.21	14,854	25,593

D-note

01a1086/1dnins

The overall range of this plan, .42%, is higher than the overall range of the bill it amends (.00%). It is also higher than the overall range of the congressional plans adopted after 1970 (1970 (.07%), 1980 (.09%), and 1990 (.00%)). The smaller the overall range of a plan, the more defensible the plan is under article I, section 2 of the U.S. Constitution (requiring congressional districts within the state to be strictly equal in population). You may want to consider reducing the overall range of this plan.

PC

<Senior Legislative Analyst>



LPS: this is Pete Cannon's title for the signoff

**DRAFTER'S NOTE
FROM THE
LEGISLATIVE REFERENCE BUREAU**

LRBa1086/1dn
PC:cjs:ch

January 21, 2002

The overall range of this plan, .42%, is higher than the overall range of the bill it amends (.00%). It is also higher than the overall range of the congressional plans adopted after 1970 (1970 (.07%), 1980 (.09%), and 1990 (.00%)). The smaller the overall range of a plan, the more defensible the plan is under article I, section 2 of the U.S. Constitution (requiring congressional districts within the state to be strictly equal in population). You may want to consider reducing the overall range of this plan.

Peter Cannon
Senior Legislative Analyst
Phone: (608) 266-5446
E-mail: peter.cannon@legis.state.wi.us