

WISCONSIN STATE  
LEGISLATURE  
COMMITTEE HEARING  
RECORDS

2005-06

(session year)

Assembly

(Assembly, Senate or Joint)

Committee on  
Housing  
(AC-Ho)

(Form Updated: 11/20/2008)

**COMMITTEE NOTICES ...**

➤ Committee Reports ... CR

\*\*

➤ Executive Sessions ... ES

\*\*

➤ Public Hearings ... PH

\*\*

➤ Record of Comm. Proceedings ... RCP

\*\*

**INFORMATION COLLECTED BY COMMITTEE  
FOR AND AGAINST PROPOSAL ...**

➤ Appointments ... Appt

\*\*

Name:

➤ Clearinghouse Rules ... CRule

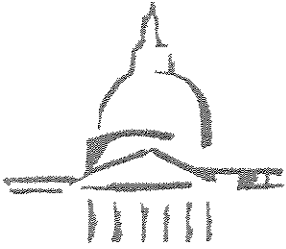
\*\*

➤ Hearing Records ... HR (bills and resolutions)

\*\*

➤ Miscellaneous ... Misc

**\*\*05hr\_AC-Ho\_Misc\_pt02**



**Rick Skindrud**  
 SERGEANT-AT-ARMS  
 WISCONSIN STATE ASSEMBLY

**Anne Tonnon Byers**  
 DEPUTY SERGEANT-AT-ARMS

State Capitol • Room 411 West  
 Post Office Box 8952  
 Madison, Wisconsin 53708-8952  
 (608) 267-9808 • Fax: (608) 282-3577  
<http://www.assemblysergeant.com>  
[rick.skindrud@legis.state.wi.us](mailto:rick.skindrud@legis.state.wi.us)

# Memo

**To:** ALL ASSEMBLY LEGISLATORS  
**From:** Rick Skindrud  
**Date:** 01/14/05  
**Re:** Committee Room Number Assignments 2005-2006 Session

Tuesday Even		Wednesday Even		Thursday Even	
Southeast WI Freeways (6) <i>Honadel</i>	225NW	Labor (9) <i>Nass</i>	225NW	Aging & Long Term Care (10) <i>Townsend</i>	225NW
Forestry (6) <i>Friske</i>	300NE	Ways & Means (13) <i>Wood</i>	300NE	Campaigns & Elections (6) <i>Freese</i>	300NE
State Affairs (9) <i>Fitzgerald</i>	328NW	Rural Development (8) <i>M. Williams</i>	328NW	Children & Families (8) <i>Kestell</i>	328NW
Economic Development (9) <i>McCormick</i>	400NE	Highway Safety (8) <i>Petrowski</i>	400NE	Family Law (6) <i>Owens</i>	400NE
Health (13) <i>Underheim</i>	GAR	Military Affairs (8) <i>Musser</i>	GAR	Agriculture (15) <i>Ott</i>	GAR
Energy & Utilities (11) <i>Montgomery</i>	415NW	Natural Resources (15) <i>Gunderson</i>	415NW	Financial Institutions (16) <i>Hundertmark</i>	415NW
Tuesday Odd		Wednesday Odd		Thursday Odd	
Colleges & Universities (12) <i>Kreibich</i>	225NW	Government Operations & Spending Limitations (6) <i>Lasee</i>	225NW	Judiciary (8) <i>Gundrum</i>	225NW
Tourism (12) <i>Pettis</i>	300NE	Property Rights & Land Management (6) <i>Albers</i>	300NE	Rural Affairs & Renewable Energy (9) <i>Hahn</i>	300NE
Budget Review (6) <i>Kerkman</i>	328NW	Education Reform (9) <i>Vukmir</i>	328NW	Insurance (15) <i>Nischke</i>	328NW
Veteran Affairs (8) <i>Loeffelholz</i>	400NE	Corrections & the Courts (10) <i>Bies</i>	400NE	Housing (6) <i>Wieckert</i>	400NE
Education (12) <i>Towns</i>	GAR	Criminal Justice & Homeland Security (12) <i>Suder</i>	GAR	Transportation (15) <i>Ainsworth</i>	GAR
Small Business (8) <i>VanRoy</i>	415NW	Public Health (8) <i>Hines</i>	415NW	Workforce Development (12) <i>Krawczyk</i>	415 NW
Urban & Local Affairs (8) <i>LeMahieu</i>	NHR	Medicaid Reform (8) <i>Gielow</i>	NHR	State-Federal Relations (6) <i>Lothian</i>	NHR

### **Note to Committee Chairs: How the Even/Odd System Works**

The Assembly leadership has established a system of alternating even and odd weeks for the allocation of committee meeting dates and rooms. This has been done for several reasons. It helps to minimize situations in which members have multiple hearings to attend simultaneously. It also increases the ability of the Sergeant at Arms office to assure that committee chairs will have access to the hearing rooms they need when they want to hold committee meetings.

There are several ways for the committee chair to determine whether a date on which he or she proposes to meet falls within an "even" or "odd" week. The Chief Clerk's office has sent out a calendar of the biennium, indicating which weeks are even and which are odd. If you need a copy of the even/odd calendar feel free to contact my office and we will forward you a copy.

### **Presumptive Right of Access**

There are a number of good reasons for committee chairs to schedule their hearings on their assigned day. The best reason is that, with the exception of certain events sponsored by the Assembly leadership (like party caucuses), a committee chair has bumping rights over other events scheduled in the room assigned to his or her committee – including other committee hearings. So scheduling a hearing on the scheduled day and in the assigned room greatly reduces the chance that the chair will be asked to change rooms or to re-schedule his or her hearing. Our office will also require the permission of the Speaker, contact Ellen Nowak, to schedule hearings for committees outside of their regularly scheduled day.

### **Why This Room?**

Unfortunately, the amount of space available to the Assembly for hearings is quite limited. In developing these room assignments, we tried to keep committees in the rooms they had previously met in. If changes were made, various considerations were taken into account including the number of legislators and support staff on each committee, the number of times each committee is likely to meet, and the size of the crowds the committee is likely to draw. The assignments have been developed in coordination with Speaker's office. Should considerable conflicts arise, we will review the assignments once the committees start meeting regularly, and make changes if they are warranted, based on practical experience. But, out of fairness to everyone, our inclination is to leave the assignments as unchanged as possible.

### **Reserving Your Room**

Committee chairs are respectfully asked to contact Anne Tonnon Byers (266-2004) or me (267-9808) to reserve a hearing room for their committees. Rooms may also be requested on-line by access the Room Management System at <http://rms>. It is imperative that the Sergeant's office be called to check on room availability before a hearing notice is published. Even though committee chairs have bumping rights in their assigned rooms, it is not safe to assume automatically that a given room is available. A committee's room may already be reserved for a superceding use, such as a partisan caucus, leadership press conference, or the like. Additionally, we need to make sure the meeting actually gets added to our schedule, so we can assign a messenger to work at the hearing and make sure the room is set up in advance.



**Important** - Please do not assume that your room is available. The Sergeant's office should **always** be contacted prior to scheduling a hearing. We would not want a committee clerk, chair, or other committee members to be embarrassed by not having the committee set up or worse yet not having a committee room available at all.

In addition, it is important to notify us if you expect to have an extraordinary large turn out at a committee meeting so that we can try to accommodate all who are in attendance.

### **Questions?**

Please feel free to call me at 267-9808. I can also be reached at [rick.skindrud@legis.state.wi.us](mailto:rick.skindrud@legis.state.wi.us).

## 2005-2006 Committee Assignments, by Chair

1/5/2005

<b>Chair</b>	<b>Committee</b>	<b>Clerk</b>	<b>Assignment</b>	<b>Room</b>
<b>Ainsworth</b>	Transportation	Kristina	Thurs-Odd	GAR
<b>Albers</b>	Property Rights & Land Mgmt	Ryan Gruber	Wed-Odd	300 NE
<b>Bies</b>	Corrections & Courts	Andrew Nolan	Wed-Odd	400 NE
<b>Fitzgerald</b>	State Affairs	Brian Pleva	Tues-Even	328 NW
<b>Freese</b>	Campaigns & Elections	Terri Griffiths	Thurs-Even	300 NE
<b>Friske</b>	Forestry	Tim Gary	Tues-Even	300 NE
<b>Gielow</b>	Medicaid Reform	John Reinemann	Wed-Odd	NHR
<b>Gunderson</b>	Natural Resources	Mike Bruhn	Wed-Even	415 NW
<b>Gundrum</b>	Judiciary	Jolene Churchill	Thurs-Odd	225 NW
<b>Hahn</b>	Rural Affairs & Renewable Energy	Wendy Minick	Thurs-Odd	300 NE
<b>Hines</b>	Public Health	Carolyn Hughes	Wed-Odd	415 NW
<b>Honadel</b>	SE Wisconsin Freeways	Chris Reader	Tues-Even	225 NW
<b>Hundertmark</b>	Financial Institutions	Jason Rostan	Thurs-Even	415 NW
<b>Kerkman</b>	Budget Review	Sarah Popp	Tues-Odd	328 NW
<b>Kestell</b>	Children & Families	Dave Matzen	Thurs-Even	328 NW
<b>Krawczyk</b>	Workforce Development	Ken Machtan	Thurs-Odd	415 NW
<b>Kreibich</b>	Colleges & Universities	Brad Hub	Tues-Odd	225 NW
<b>Lasee</b>	Gov. Ops & Spending Limits	Lance Burri	Wed-Odd	225 NW
<b>LeMahieu</b>	Urban & Local Affairs	Jeff Grothman	Tues-Odd	NHR
<b>Loeffelholz</b>	Veterans Affairs	Virginia Mueller	Tues-Odd	400 NE
<b>Lothian</b>	State-Federal Relations	Royce DeBow	Thurs-Odd	NHR
<b>McCormick</b>	Economic Development	Ryan Murray	Tues-Even	400 NE
<b>Montgomery</b>	Energy & Utilities	Adam Raschka	Tues-Even	415 NW
<b>Musser</b>	Military Affairs	Marlene	Wed-Even	GAR
<b>Nass</b>	Labor	Mike Mikalsen	Wed-Even	225 NW
<b>Nischke</b>	Insurance	Mary Jan	Thurs-Odd	328 NW
<b>Ott</b>	Agriculture	Erin Napralla	Thurs-Even	GAR
<b>Owens</b>	Family Law	Jacque Dicks	Thurs-Even	400 NE
<b>Petrowski</b>	Highway Safety	Katie Scott	Wed-Even	400 NE
<b>Pettis</b>	Tourism	Kimberly Liedl	Tues-Odd	300 NE
<b>Suder</b>	Criminal Justice & Homeland Security	Anne Emerson	Wed-Odd	GAR
<b>Towns</b>	Education	Casey Langan	Tues-Odd	GAR
<b>Townsend</b>	Aging & Long Term Care	Minette Lawrence	Thurs-Even	225 NW
<b>Underheim</b>	Health	Randy Thorstad	Tues-Even	GAR
<b>Van Roy</b>	Small Business	Tanya Hein	Tues-Odd	415 NW
<b>Vukmir</b>	Education Reform	Dean Cady	Wed-Odd	328 NW
<b>Wieckert</b>	Housing	Scott Becher	Thurs-Odd	400 NE
<b>Williams</b>	Rural Development	Cindy Polzin	Wed-Even	328 NW
<b>Wood</b>	Ways & Means	Tony Blodgett	Wed-Even	300 NE

**2005-2006 Committee Assignments, by Committee**

1/5/2005

<b>Committee</b>	<b>Chair</b>	<b>Clerk</b>	<b>Assignment</b>	<b>Room</b>
<b>Aging &amp; Long Term Care</b>	Townsend	Minette	Thurs-Even	225 NW
<b>Agriculture</b>	Ott	Erin Napralla	Thurs-Even	GAR
<b>Budget Review</b>	Kerkman	Sarah Popp	Tues-Odd	328 NW
<b>Campaigns &amp; Elections</b>	Freese	Terri Griffiths	Thurs-Even	300 NE
<b>Children &amp; Families</b>	Kestell	Dave Matzen	Thurs-Even	328 NW
<b>Colleges &amp; Universities</b>	Kreibich	Brad Hub	Tues-Odd	225 NW
<b>Corrections &amp; Courts</b>	Bies	Andrew	Wed-Odd	400 NE
<b>Criminal Justice &amp; Homeland Security</b>	Suder	Anne	Wed-Odd	GAR
<b>Economic Development</b>	McCormick	Ryan Murray	Tues-Even	400 NE
<b>Education</b>	Towns	Casey	Tues-Odd	GAR
<b>Education Reform</b>	Vukmir	Dean Cady	Wed-Odd	328 NW
<b>Energy &amp; Utilities</b>	Montgomery	Adam	Tues-Even	415 NW
<b>Family Law</b>	Owens	Jacque Dicks	Thurs-Even	400 NE
<b>Financial Institutions</b>	Hundertmark	Jason Rostan	Thurs-Even	415 NW
<b>Forestry</b>	Friske	Tim Gary	Tues-Even	300 NE
<b>Gov. Ops &amp; Spending Limits</b>	Lasee	Lance Burri	Wed-Odd	225 NW
<b>Health</b>	Underheim	Randy	Tues-Even	GAR
<b>Highway Safety</b>	Petrowski	Katie Scott	Wed-Even	400 NE
<b>Housing</b>	Wieckert	Scott Becher	Thurs-Odd	400 NE
<b>Insurance</b>	Nischke	Mary Jan	Thurs-Odd	328 NW
<b>Judiciary</b>	Gundrum	Jolene	Thurs-Odd	225 NW
<b>Labor</b>	Nass	Mike	Wed-Even	225 NW
<b>Medicaid Reform</b>	Gielow	John	Wed-Odd	NHR
<b>Military Affairs</b>	Musser	Marlene	Wed-Even	GAR
<b>Natural Resources</b>	Gunderson	Mike Bruhn	Wed-Even	415 NW
<b>Property Rights &amp; Land Mgmt</b>	Albers	Ryan Gruber	Wed-Odd	300 NE
<b>Public Health</b>	Hines	Carolyn	Wed-Odd	415 NW
<b>Rural Affairs &amp; Renewable Energy</b>	Hahn	Wendy	Thurs-Odd	300 NE
<b>Rural Development</b>	Williams	Cindy Polzin	Wed-Even	328 NW
<b>Small Business</b>	Van Roy	Tanya Hein	Tues-Odd	415 NW
<b>SE Wisconsin Freeways</b>	Honadel	Chris Reader	Tues-Even	225 NW
<b>State Affairs</b>	Fitzgerald	Brian Pleva	Tues-Even	328 NW
<b>State-Federal Relations</b>	Lothian	Royce	Thurs-Odd	NHR
<b>Tourism</b>	Pettis	Kimberly	Tues-Odd	300 NE
<b>Transportation</b>	Ainsworth	Kristina	Thurs-Odd	GAR
<b>Urban &amp; Local Affairs</b>	LeMahieu	Jeff	Tues-Odd	NHR
<b>Veterans Affairs</b>	Loeffelholz	Virginia	Tues-Odd	400 NE
<b>Ways &amp; Means</b>	Wood	Tony Blodgett	Wed-Even	300 NE
<b>Workforce Development</b>	Krawczyk	Ken Machtan	Thurs-Odd	415 NW

**2005-2006 Committee Assignments, by Location**

1/5/2005

<b>Room</b>	<b>Committee</b>	<b>Chair</b>	<b>Clerk</b>	<b>Assignment</b>
225 NW	SE Wisconsin Freeways	Honadel	Chris Reader	Tues-Even
225 NW	Labor	Nass	Mike Mikalsen	Wed-Even
225 NW	Aging & Long Term Care	Townsend	Minette Lawrence	Thurs-Even
225 NW	Colleges & Universities	Kreibich	Brad Hub	Tues-Odd
225 NW	Gov. Ops & Spending Limits	Lasee	Lance Burri	Wed-Odd
225 NW	Judiciary	Gundrum	Jolene Churchill	Thurs-Odd
300 NE	Forestry	Friske	Tim Gary	Tues-Even
300 NE	Ways & Means	Wood	Tony Blodgett	Wed-Even
300 NE	Campaigns & Elections	Freese	Terri Griffiths	Thurs-Even
300 NE	Tourism	Pettis	Kimberly Liedl	Tues-Odd
300 NE	Property Rights & Land Mgmt	Albers	Ryan Gruber	Wed-Odd
300 NE	Rural Affairs & Renewable Energy	Hahn	Wendy Minick	Thurs-Odd
328 NW	State Affairs	Fitzgerald	Brian Pleva	Tues-Even
328 NW	Rural Development	Williams	Cindy Polzin	Wed-Even
328 NW	Children & Families	Kestell	Dave Matzen	Thurs-Even
328 NW	Budget Review	Kerkman	Sarah Popp	Tues-Odd
328 NW	Education Reform	Vukmir	Dean Cady	Wed-Odd
328 NW	Insurance	Nischke	Mary Jan Rosenak	Thurs-Odd
400 NE	Economic Development	McCormick	Ryan Murray	Tues-Even
400 NE	Highway Safety	Petrowski	Katie Scott	Wed-Even
400 NE	Family Law	Owens	Jacque Dicks	Thurs-Even
400 NE	Veterans Affairs	Loeffelholz	Virginia Mueller	Tues-Odd
400 NE	Corrections & Courts	Bies	Andrew Nolan	Wed-Odd
400 NE	Housing	Wieckert	Scott Becher	Thurs-Odd
415 NW	Energy & Utilities	Montgomery	Adam Raschka	Tues-Even
415 NW	Natural Resources	Gunderson	Mike Bruhn	Wed-Even
415 NW	Financial Institutions	Hundertmark	Jason Rostan	Thurs-Even
415 NW	Small Business	Van Roy	Tanya Hein	Tues-Odd
415 NW	Public Health	Hines	Carolyn Hughes	Wed-Odd
415 NW	Workforce Development	Krawczyk	Ken Machtan	Thurs-Odd
GAR	Health	Underheim	Randy Thorstad	Tues-Even
GAR	Military Affairs	Musser	Marlene Reineking	Wed-Even
GAR	Agriculture	Ott	Erin Napralla	Thurs-Even
GAR	Education	Towns	Casey Langan	Tues-Odd
GAR	Criminal Justice & Homeland Security	Suder	Anne Emerson	Wed-Odd
GAR	Transportation	Ainsworth	Kristina Boardman	Thurs-Odd
NHR	Urban & Local Affairs	LeMahieu	Jeff Grothman	Tues-Odd
NHR	Medicaid Reform	Gielow	John Reinemann	Wed-Odd
NHR	State-Federal Relations	Lothian	Royce DeBow	Thurs-Odd

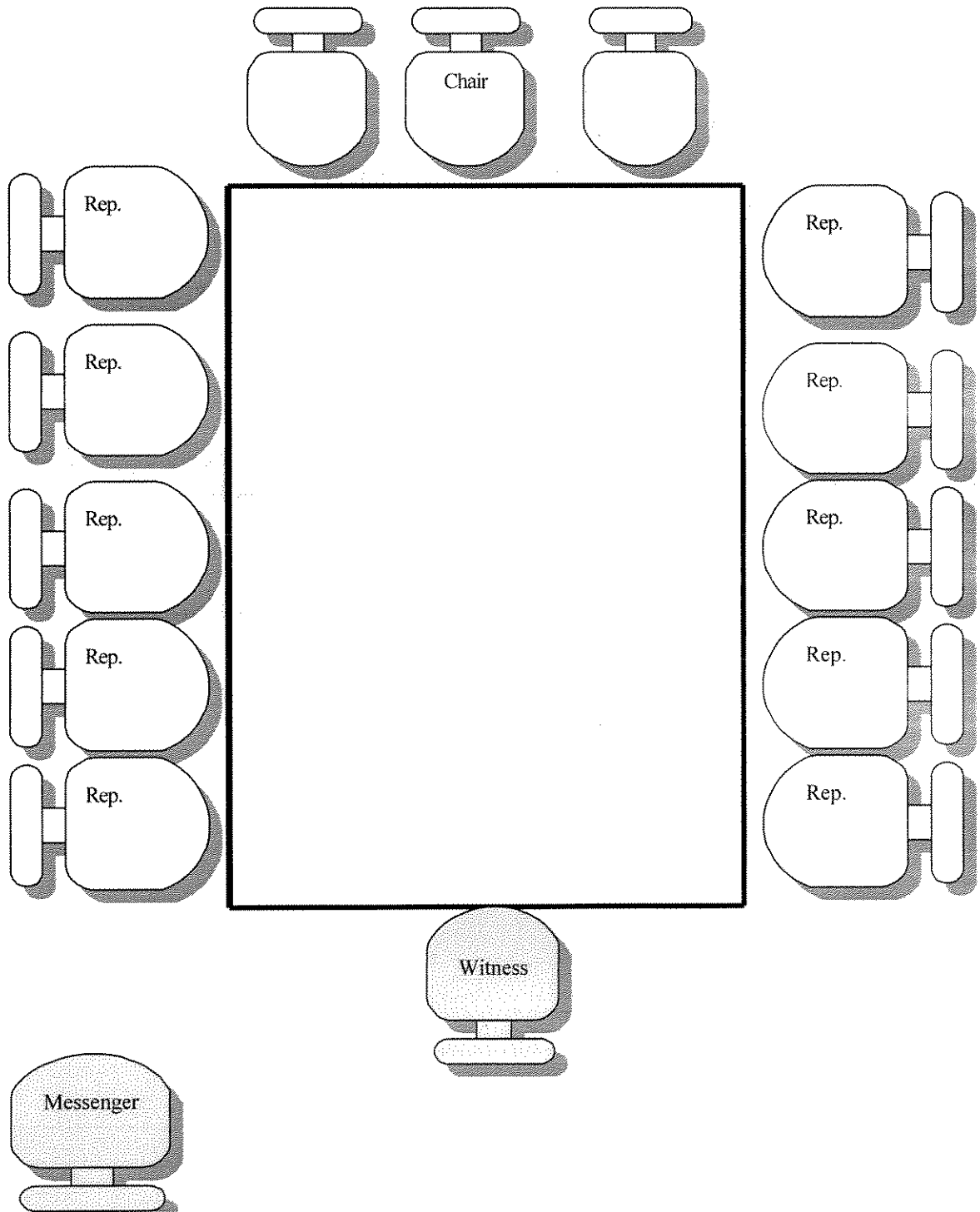
# Assembly Committee Seating Chart

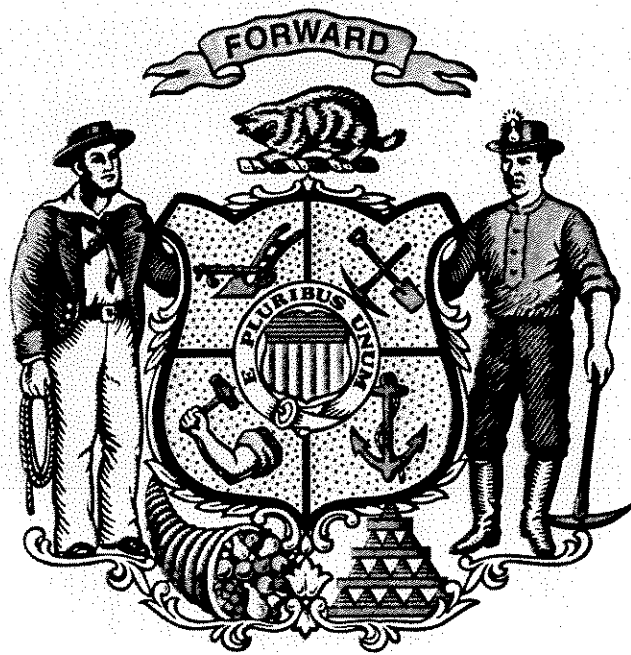
## 400 NE

(One Rectangular Table)

Committee

Chair







**Welhouse, Andrew**

---

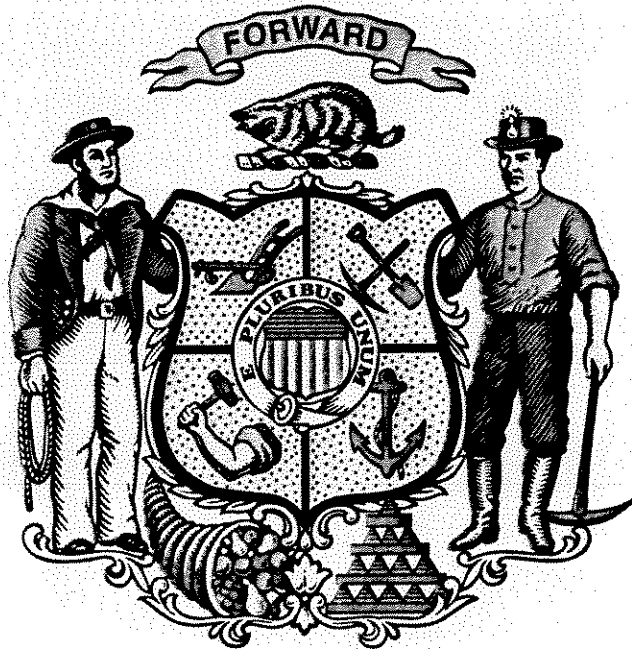
**Subject:** State Holiday (Staff has off)

**Start:** Mon 01/17/2005 12:00 AM

**End:** Tue 01/18/2005 12:00 AM

**Show Time As:** Free

**Recurrence:** (none)



FOR Scott Urgent

DATE 4/25 TIME 10:32 A.M.  P.M.

**While You Were Out**

M Adam


OF Rep. Montgomery

PHONE 266-5840

	AREA CODE	NUMBER	EXTENSION
TELEPHONED		<input checked="" type="checkbox"/>	PLEASE CALL
CAME TO SEE YOU			WILL CALL AGAIN
RETURNED YOUR CALL			WANTS TO SEE YOU

MESSAGE Phil is fine to be recorded with the chair on every vote in Housing Committee.

\_\_\_\_\_  
 \_\_\_\_\_  
 \_\_\_\_\_

SIGNED AF  **adams**  
9711



**Wisconsin Legislature  
Assembly**

**ANNETTE POLLY WILLIAMS**  
STATE REPRESENTATIVE  
10TH ASSEMBLY DISTRICT

**TO: Representative Steve Wieckert  
Committee on Housing**

**DATE: April 25, 2006**

**RE: Intended votes for executive session April 24, 2006**

I am requesting an "Excused Absence" from the Committee on Housing Executive Session today at 9:00 a.m. Due to a previously scheduled engagement, I was be unable to attend.

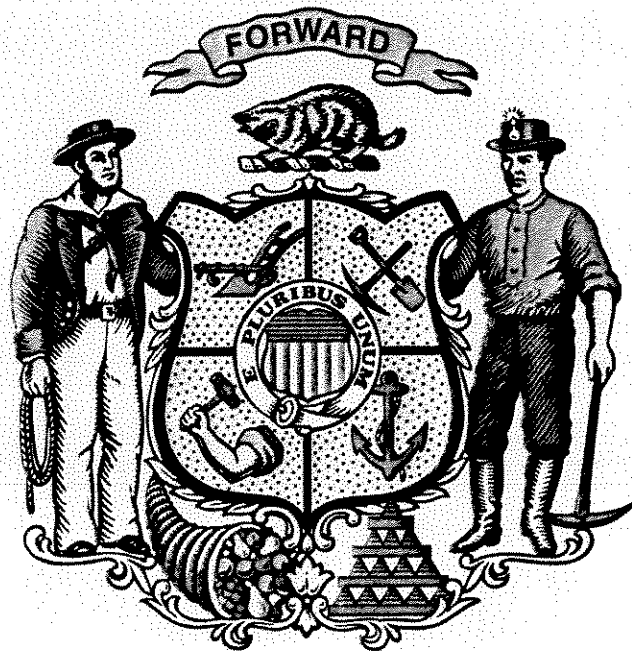
I do; however, I wish to express my positions on the bills that were voted upon:

**SB 524 - Yes**

**SB 505 - No**

**AB 1085 - Yes**

Thank you for your attention to this request.



**Krieser, Steve**

---

**From:** Senn Brown [sennb@charter.net]  
**Sent:** Tuesday, May 31, 2005 10:47 AM  
**To:** Rep.Wieckert  
**Cc:** Tom Scullen; Sandra Mills; Becher, Scott; Krieser, Steve; Senn Brown; Rep.Musser  
**Subject:** June 1 Leg Council Meeting

To: Rep. Wieckert

From: Senn Brown, WCSA Secretary (5/31/05)

Re: Proposed Tribal Charter School Authorizing Board

Creation of a Tribal Charter School Authorizing Board has been recommended by the Wisconsin Legislature's Special Committee on State - Tribal Relations. **THE WISCONSIN CHARTER SCHOOLS ASSOCIATION SUPPORTS THE PROPOSAL.** We are writing to urge your support of action at the June 1 meeting of the Wisconsin Joint Legislative Council to introduce the proposal as a legislative bill.

The proposal merely creates new OPTIONS for people. Under the proposal, tribes would have the option of participating or not participating on the authorizing board. A group interested in creating a new charter school would have the option to approach or not approach the tribal board for a charter. The board, itself, would have the option to approve or not approve a charter school proposal. Again, the committee's proposal, if enacted into law, merely creates new options for people and Wisconsin's 11 Indian tribes.

To learn more about public charter schools in Wisconsin, see the WCSA's website at <http://www.wicharterschools.org> ; and the DPI website at <http://www.dpi.state.wi.us/dpi/dfm/sms/csindex.html> . Thank you.

SENN BROWN, Secretary  
Wisconsin Charter Schools Association  
P.O. Box 628243  
Middleton, WI 53562  
Tel: 608-238-7491 Fax: 608-663-5262  
Email: [sennb@charter.net](mailto:sennb@charter.net) Web: <http://www.wicharterschools.org>



**National Indian Education Association**

700 North Fairfax Street, Suite 210

Alexandria, VA 22314

703-838-2870 / 703-838-1620 fax

www.niea.org

**Fax Cover Sheet**

Date: May 31, 2005 Cover Sheet - 1 Page

To: Representative Steve Wieckert, Co-Chair, Wisconsin Joint Legislative Council

Fax #: 608-282-3657 Phone #: \_\_\_\_\_

From:

Lillian Sparks, Executive Director

Subject: Tribal Charter School – LETTER OF SUPPORT

Message: Letter of support for Tribal Charter School Authorizing Board for tomorrow's (JUNE 1) Joint Legislative Council.

**Join NIEA in 2005 for the:**

<b>36<sup>th</sup></b>	<b>ANNUAL NIEA CONVENTION</b> Colorado Convention Center Denver, Colorado October 5 - 9, 2005	
------------------------	--	--



## National Indian Education Association

**NIEA Board of Directors  
2004/2005**

May 31, 2005

David Beaujieu, Ph.D.  
President  
White Earth Chippewa

Representative Steve Wieckert  
Co-Chair, Wisconsin Joint Legislative Council

Ryan Wilson,  
President-Elect  
Oglala Lakota

Dear Representative Wieckert:

Rita J. Locklear,  
Vice President  
Lumbee

On behalf of the National Indian Education Association (NIEA), I would like to offer a letter of support for the Tribal Charter School Authorizing Board proposal that was recently recommended by the Wisconsin Legislature's Special Committee on State-Tribal Relations. Founded in 1969, the mission of NIEA is to support traditional Native cultures and values, to enable Native learners to become contributing members of their communities, to promote Native control of educational institutions, and to improve educational opportunities and resources for American Indians, Alaska Natives, and Native Hawaiians throughout the United States.

Caleb Roarhorse,  
Secretary  
Navajo

Under the current committee proposal, the Tribal Charter School Authorizing Board, an independent state agency consisting of volunteering representatives of Wisconsin's eleven (11) tribes, would be allowed to authorize the creation of public charter schools located on tribal reservations or off-reservation trust lands. Charter schools authorized by the new tribal board would be independent of school districts and funded directly by a state per-pupil payment. Currently, the state allocates \$7,111 per pupil to each independent charter school.

Barbara Abrams,  
Treasurer  
Tonawanda Seneca

Pauline M. Begay, Ph.D.,  
Navajo

Christopher Bordcaux,  
Sicangu Lakota

Cameron Cuch,  
Northern Ute

This proposal would continue to help the under-represented and often neglected Native students of Wisconsin. I urge you and your fellow Wisconsin legislative members to vote "yes" on this proposal, when it comes to a full vote.

Vertie Ann Malina-Wright, Ph.D.,  
Native Hawaiian

Nancy R. Martine-Alonzo,  
Navajo/Nez Perce

If you should have any questions or concerns, please feel free to contact me at (703)838-2170.

LeAndra Blisie,  
Student Board Member  
Navajo

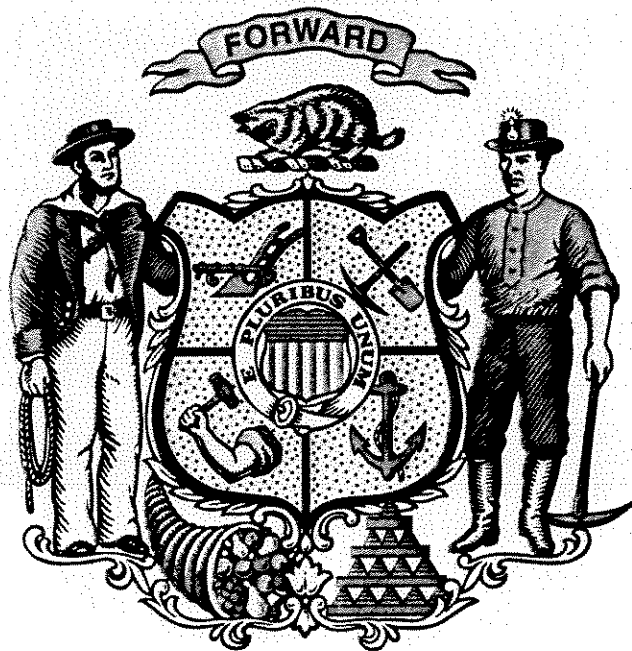
Warmest regards,

Tony Lee Tsatoka,  
Student Board Member  
Kiowa

David Beaujieu, Ph.D.  
President

Jillian Sparks, Esq.,  
Executive Director  
Oglala/Sicangu Lakota





3 February 2006

TO: REPRESENTATIVE STEVE WIECKERT  
ROOM 16 WEST  
STATE CAPITOL  
P.O. BOX 8953  
MADISON, WI 53708

SUBJECT: SUPPORT OF WINDOW REPLACEMENT BILL LRB 3117/4

Having been a Landlord for 48 years, I would like to make the following comments:

I know old lead painted windows are the main source of kids' lead poisoning.

I know when I replace old single pane windows with thermo pane windows, utility bills go down.  
(Money and energy saving)

I know this saves money for poor renters.

I have insulated pre 1950 houses and know this saves energy and money and would support insulating old houses in this bill.

I know replacing old windows adds value to property.

I know I would like to see WISCONSIN be a leader in window replacement in the nation.

I know many other reasons to do this.

I have attended many lead poisoning seminars and speak with knowledge from education on this subject. This lead poisoning from windows has been around for a long time, so lets finally do something about this, I ask all legislators to support this very worthy thing for our kids.

THANK YOU FOR YOUR EFFORTS

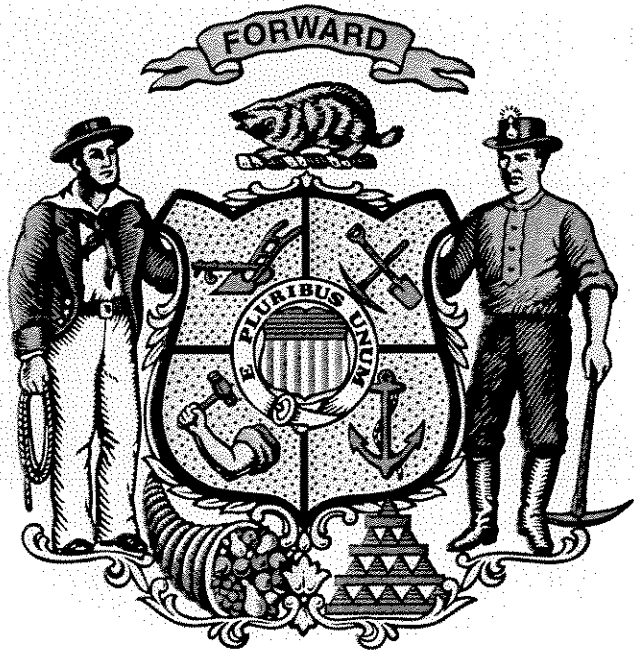
GOD BLESS AMERICA



Willie F. Petzrick  
1850 E. Huebbe Pkwy #332  
Beloit, WI 53511-6525  
E-mail: [peteanna@ticon.net](mailto:peteanna@ticon.net)  
Phone: 1-608-362-5358

CC:

Senator Judy Robson  
Representative Chuck Benedict  
Other Legislators/Other Interested Parties





WisBusiness.com | WisOpinion.com | [Subscribe](#) | [Advertise](#) | [Contact Us](#) **FEATURES** **PRESS RELEASE**

Advertisement

**SUBSCRIBE TODAY!**  
**WISBUSINESS.COM**  
 **CLICK HERE**

**WISPOLITICS.COM**  
**Presents**  
**Milwaukee Notes**  
 A new free e-mail update covering Milwaukee Politics.

## SITE RESOURCES

### HOME

[Online Store](#)

[WisOpinion.com](#)

### FEATURES

[Election Coverage](#)

[Ad Watch](#)

[Wisconsin By the Numbers](#)

[Scandal Sheet](#)

[Month at a Glance](#)

### SEARCH

[Lobbyist Search](#)

[Money Search](#)

[Polling Archive](#)

[State Employee Directory](#)

[Find Your Legislator](#)

### LINKS

[Media, Gov't & Political Links](#)

### LEGISLATIVE TRACKING

[Legislative Notification Service](#)

[State Legislation](#)

[Recent Votes in](#)

## WisPolitics: Underheim Falls Short on Nomination Signatures for DPI Race 1/4/2005

By Greg Bump

By a matter of minutes, State Rep. Gregg Underheim, R-Oshkosh, beat the 5 p.m. deadline Tuesday for filing his nomination signatures to run against state Department of Public Supt. Elizabeth Burmaster. However, when the state Elections Board finished its tally last night, it counted just 1,863 valid signatures, 137 short of the 2,000 needed to qualify for

With about five minutes to spare, Underheim and several others rushed into the Elections office in the Risser Justice Building to turn in what they thought were the needed 2,000. At the time, Underheim estimated the total to be between 2,200 and 2,300 signatures. Underheim was in the Elections Board office but left shortly after Underheim arrived.

With Underheim out, Burmaster would face a three-way primary that includes UW-Wisconsin professor Paul Yvarra and Black Earth teacher Todd Stelzel.

In other spring election news, Supreme Court Justice Ann Walsh Bradley will be unopposed by Bay Atty. John C. Gower, who filed a notice of candidacy Monday with the Elections Board and turn in the required signatures to qualify for the ballot.

[State Elections Board Spring Election Page](#)



[Printer-friendly version](#)



[Send this article to a friend](#)

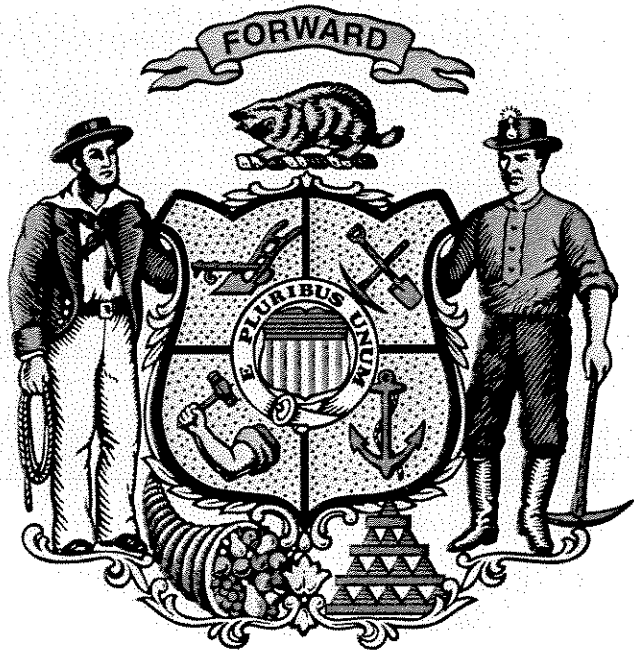
**Congress**

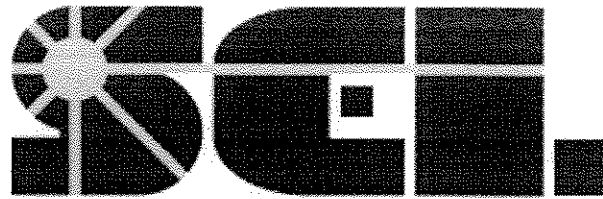
**Congressional Bills**

**Online Legal Notices**

**SUBSCRIBER  
PRODUCTS**

**Login**




[UW HOME](#)   [MY UW](#)   [UW SEARCH](#)
[UW-Madison](#) > [Mechanical Engineering](#) > [Solar Energy Lab](#)


# Solar Energy Laboratory

[SEL Events](#)  
[Research](#)  
[Students](#)  
[Software](#)  
[Faculty/Staff](#)  
[Alumni](#)  
[Publications](#)  
[Admissions](#)  
[Contact](#)  
[Local](#)  
[Links](#)

[ISES Solar World  
Congress 2005](#)

The University of Wisconsin-Madison College of Engineering's Solar Energy Lab (SEL) is the oldest of its kind in the world. It has been recognized nationally and internationally for accomplishments in practical applications for solar energy. UW-Madison's SEL was awarded the highest distinction given by the International Solar Energy Society, the Weeks award, for outstanding achievements in developing practical uses of solar energy.

The goal of the laboratory is to educate students through research experiences in solar and conventional energy utilization and to remain on the competitive edge of new developments. The SEL emphasizes applications of engineering fundamentals to energy problems, and leads students to advanced degrees in mechanical and chemical engineering.

Graduates with degrees in this area obtain positions in industry, government laboratories and academic settings. Many students have taken research and development jobs in large heating, ventilating and air conditioning (HVAC) firms, control companies, renewable and conventional energy firms, and consulting architectural and engineering firms involved in engineering applications.

## Laboratory History

The laboratory was founded in 1954. During its first decade, major research activities related to applications of solar energy in developing countries. The program was concerned with solar applications of water and air heating, refrigeration, air conditioning and distillation.

In the early 1970s, an extensive research program on modeling and simulation of solar processes began and soon became the essence of the program.

Since 1980, the SEL's activities have broadened to include studies of transient thermal systems that do not involve solar processes. These include HVAC system performance, energy management and control strategies, air quality research and industrial processes.

## **Water Heater vs. Family Car CO<sub>2</sub> Output**

The Kyoto Protocol requires the United States to reduce its CO<sub>2</sub> emissions to approximately 7% below its 1990 levels between the years 2008 – 2012, which is a reduction to approximately 18% below current CO<sub>2</sub> emission levels.

Here at the Solar Energy Lab, a study was conducted that focused on analyzing the extent to which solar thermal energy systems can be used for residential and commercial water and space heating purposes in order to help reduce the United States' future CO<sub>2</sub> emissions. The above link allows you to see some of the data that was collected.

Chemical Engineering | Mechanical Engineering | UW Home

File last updated: December 9, 2004

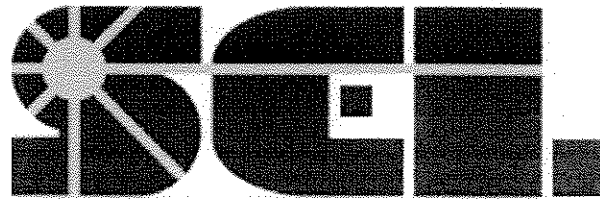
**All photographs on this website are copyrighted and may not be used without the express permission of the copyright holder. Please contact the webmaster for more information.**

Address comments to [trnsys@engr.wisc.edu](mailto:trnsys@engr.wisc.edu)

NEW







## Faculty and Staff

[SEL Home](#)

### Faculty

- [Prof. William A. Beckman](#), *Director*
- [Prof. John W. Mitchell](#)
- [Prof. Sanford A. Klein](#)
- [Prof. Douglas T. Reindl](#)
- [Prof. Gregory F. Nellis](#)
- [Prof. Timothy A. Shedd](#)
- [Prof. J. A. Duffie](#), *Emeritus Professor*

### Staff

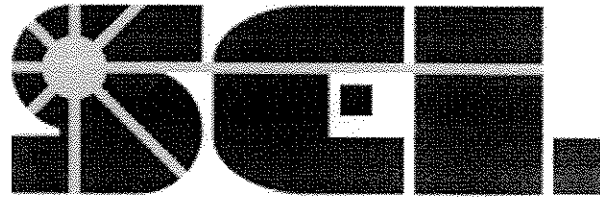
- Michael Kummert - A professional staff engineer who maintains the [TRNSYS](#) program, works with outside users of the program, continues program development, and instructs graduate students in computer usage.
- Chris Riley - TRNSYS and Office Assistant

[Chemical Engineering](#) | [Mechanical Engineering](#) | [UW Home](#)

File last updated: April 4, 2003

**All photographs on this website are copyrighted and may not be used without the express permission of the copyright holder. Please contact the webmaster for more information.**

Address comments to [trnsys@engr.wisc.edu](mailto:trnsys@engr.wisc.edu)



## General Research

[SEL Home](#)

[Student Projects](#)

Research at the SEL currently involves a number of interrelated areas: solar heating and cooling, photovoltaics, desiccant and absorption cooling, control of HVAC systems, air quality in buildings, thermal storage and food processing. The common thread of the research is the development and use of simulation methods to perform numerical experiments on the systems; numerical experiments are then compared to physical measurements to assure realism.

Simulation methods developed at the SEL have become powerful tools for research, development and design for solar energy and other industries. A general-purpose transient simulation program, [TRNSYS](#), was developed in the laboratory and has been distributed to laboratories, industries and government agencies throughout the world. The [FCHART](#) program, also developed at the SEL, has been widely distributed and provides rapid thermal performance and economic analysis of standard types of active and passive solar heating systems.

Thermal energy storage is of major concern to solar and building energy systems. Projects include the design and evaluation of the free convection heat transfer, from heat exchanger to fluid, inside solar energy tanks, and the use of ice as a storage medium to offset daytime air conditioning loads.

The optimal control of the heating and cooling processes in buildings provide an opportunity for significant energy savings. Several

projects investigate controlling conventional building and solar energy systems to provide comfort and meet air quality standards at minimum operating cost. Algorithms for optimal control have been developed for implementation in a building energy management system. The use of optimal control methods to detect operating faults in the system is also under study.

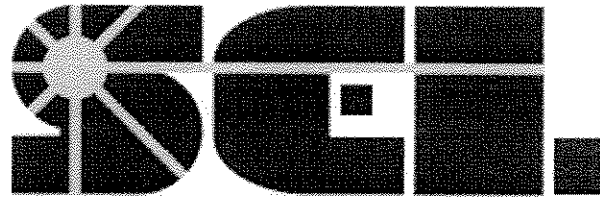
In addition to projects on campus, students have opportunities to become involved with research at other laboratories. Cooperative research has been conducted with the Solar Energy Applications Laboratory at Colorado State University, the National Institute of Standards and Technology, the National Renewable Energy Laboratory and, through ASHRAE sponsorship, building test facilities.

[Chemical Engineering](#) | [Mechanical Engineering](#) | [UW Home](#)

File last updated: July 12, 2002

**All photographs on this website are copyrighted and may not be used without the express permission of the copyright holder. Please contact the webmaster for more information.**

Address comments to [trnsys@enr.wisc.edu](mailto:trnsys@enr.wisc.edu)



## General Research

[SEL Home](#)

[Student Projects](#)

Research at the SEL currently involves a number of interrelated areas: solar heating and cooling, photovoltaics, desiccant and absorption cooling, control of HVAC systems, air quality in buildings, thermal storage and food processing. The common thread of the research is the development and use of simulation methods to perform numerical experiments on the systems; numerical experiments are then compared to physical measurements to assure realism.

Simulation methods developed at the SEL have become powerful tools for research, development and design for solar energy and other industries. A general-purpose transient simulation program, TRNSYS, was developed in the laboratory and has been distributed to laboratories, industries and government agencies throughout the world. The FCHART program, also developed at the SEL, has been widely distributed and provides rapid thermal performance and economic analysis of standard types of active and passive solar heating systems.

Thermal energy storage is of major concern to solar and building energy systems. Projects include the design and evaluation of the free convection heat transfer, from heat exchanger to fluid, inside solar energy tanks, and the use of ice as a storage medium to offset daytime air conditioning loads.

The optimal control of the heating and cooling processes in buildings provide an opportunity for significant energy savings. Several

projects investigate controlling conventional building and solar energy systems to provide comfort and meet air quality standards at minimum operating cost. Algorithms for optimal control have been developed for implementation in a building energy management system. The use of optimal control methods to detect operating faults in the system is also under study.

In addition to projects on campus, students have opportunities to become involved with research at other laboratories. Cooperative research has been conducted with the Solar Energy Applications Laboratory at Colorado State University, the National Institute of Standards and Technology, the National Renewable Energy Laboratory and, through ASHRAE sponsorship, building test facilities.

[Chemical Engineering](#) | [Mechanical Engineering](#) | [UW Home](#)

File last updated: July 12, 2002

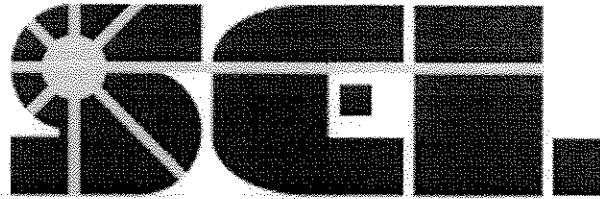
**All photographs on this website are copyrighted and may not be used without the express permission of the copyright holder. Please contact the webmaster for more information.**

Address comments to [trnsys@engr.wisc.edu](mailto:trnsys@engr.wisc.edu)



[UW HOME](#) [MY UW](#) [UW SEARCH](#)

UW-Madison > Mechanical Engineering > Solar Energy Lab



## Contact Information

[SEL Home](#)


[Admissions](#)

[Local](#)

For more information on the Solar Energy Program, please call (608) 263-1586 or contact:

**Professor W. A. Beckman, Director**


Solar Energy Laboratory  
1303 Engineering Research Building  
1500 Engineering Drive  
Madison, WI 53706-1687

 [beckman@engr.wisc.edu](mailto:beckman@engr.wisc.edu)

or:

**Chris Riley, TRNSYS and Office Assistant**

Tel: +1-(608)-263-1586  
Fax: +1-(608)-262-8464

 [cmriley2@wisc.edu](mailto:cmriley2@wisc.edu)

For TRNSYS-related information, please call (608) 263-1589 or contact:

**Michaël Kummert, TRNSYS Coordinator Michael Kummert**

 [kummert@engr.wisc.edu](mailto:kummert@engr.wisc.edu)

For any concerns or comments about the website, contact the webmaster: [trnsys@engr.wisc.edu](mailto:trnsys@engr.wisc.edu)

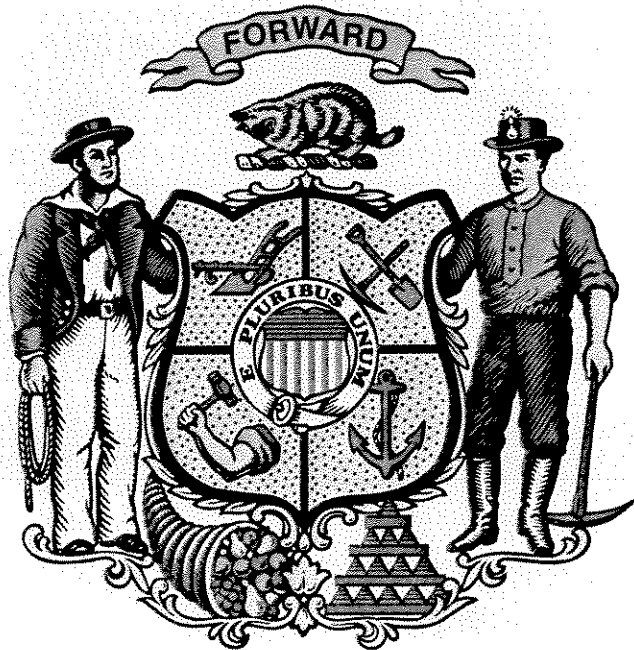
[Chemical Engineering](#) | [Mechanical Engineering](#) | [UW Home](#)

File last updated: January 14, 2003

**All photographs on this website are copyrighted and may not be used without the express permission of the copyright holder. Please contact the webmaster for more information.**

Address comments to [trnsys@engr.wisc.edu](mailto:trnsys@engr.wisc.edu)





January 12, 2005

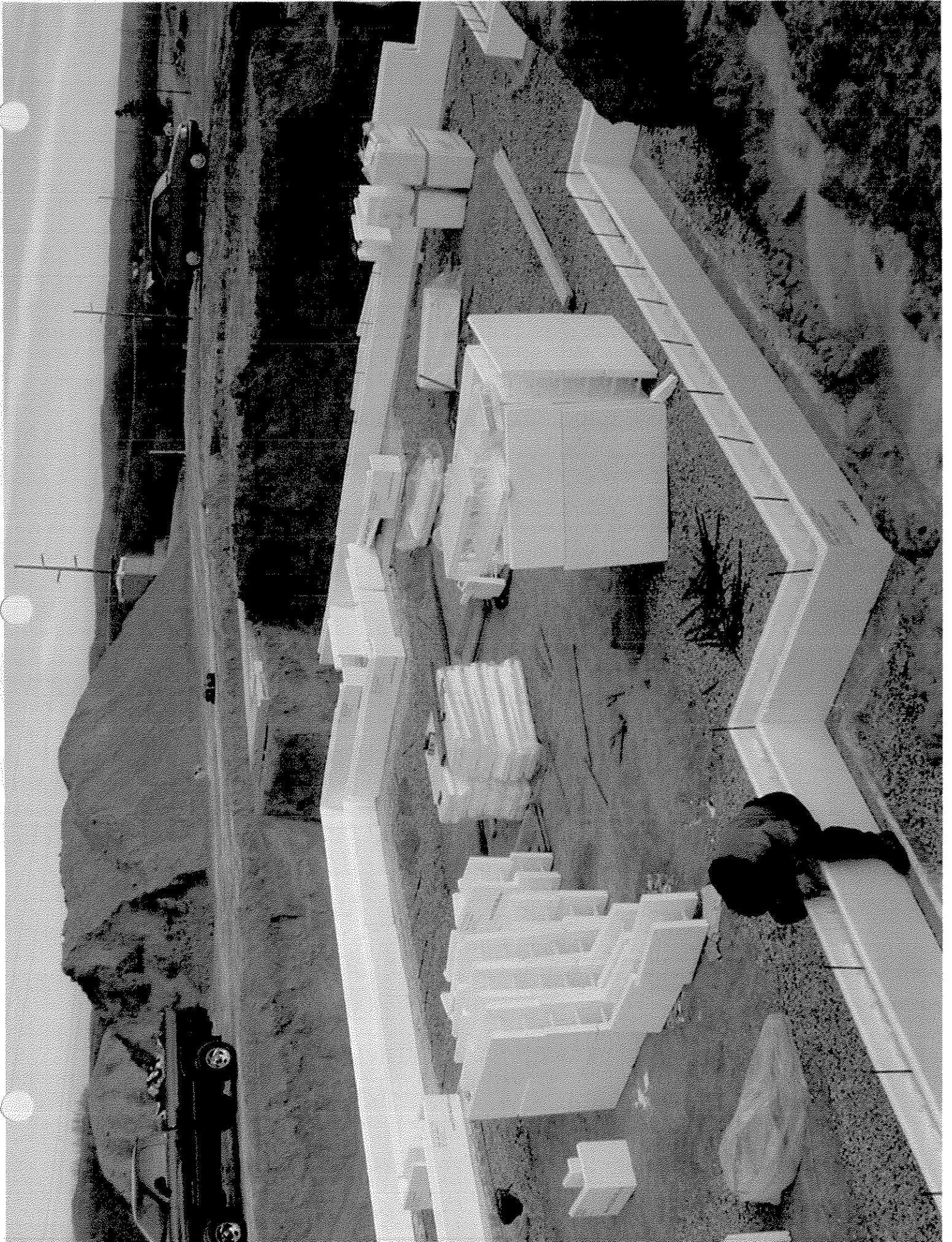
Blake Pace  
E6971 Ski Hill Road  
Reedsburg, WI 53959

Home Phone: 608.524.8330

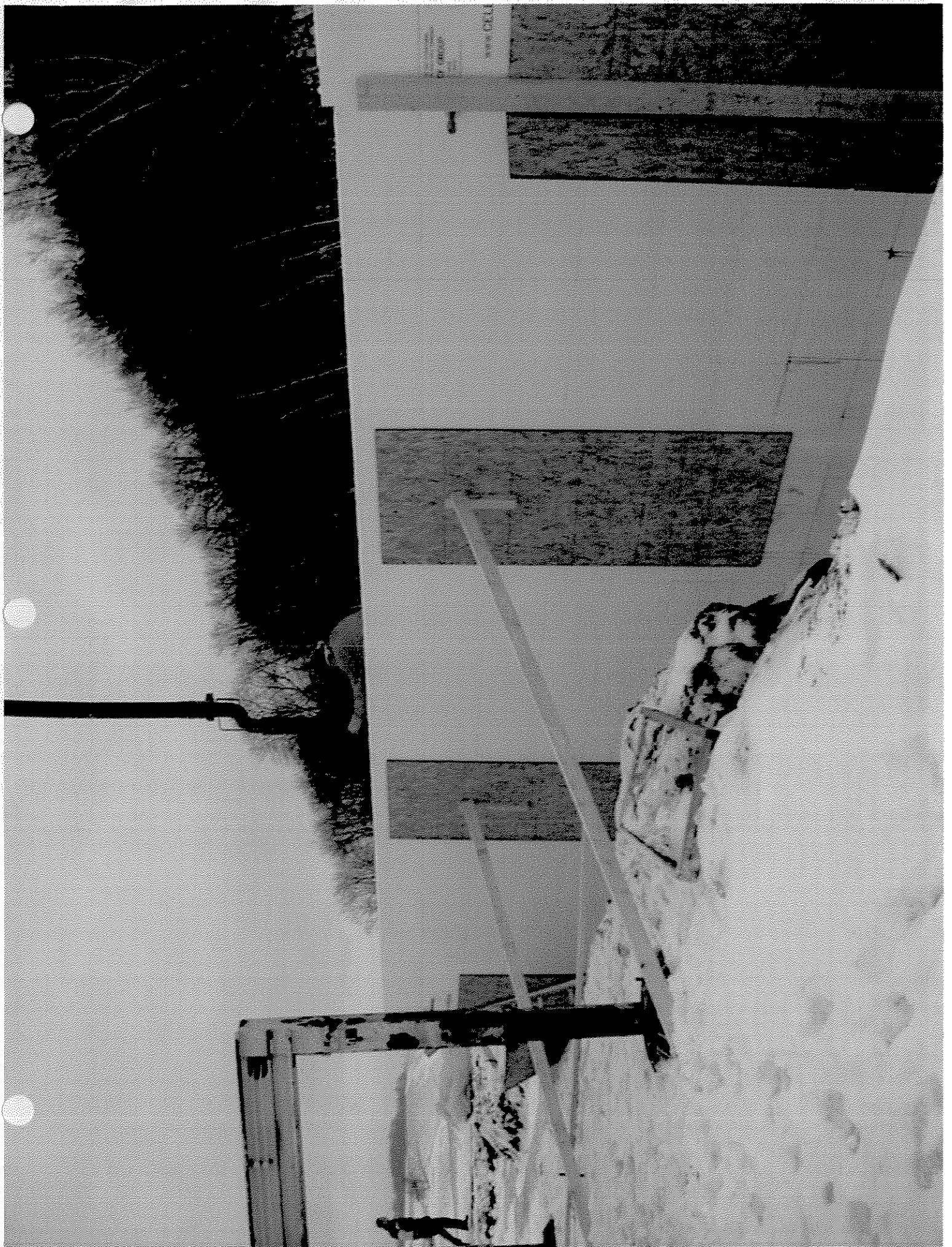
Work Phone: 608.524.6777

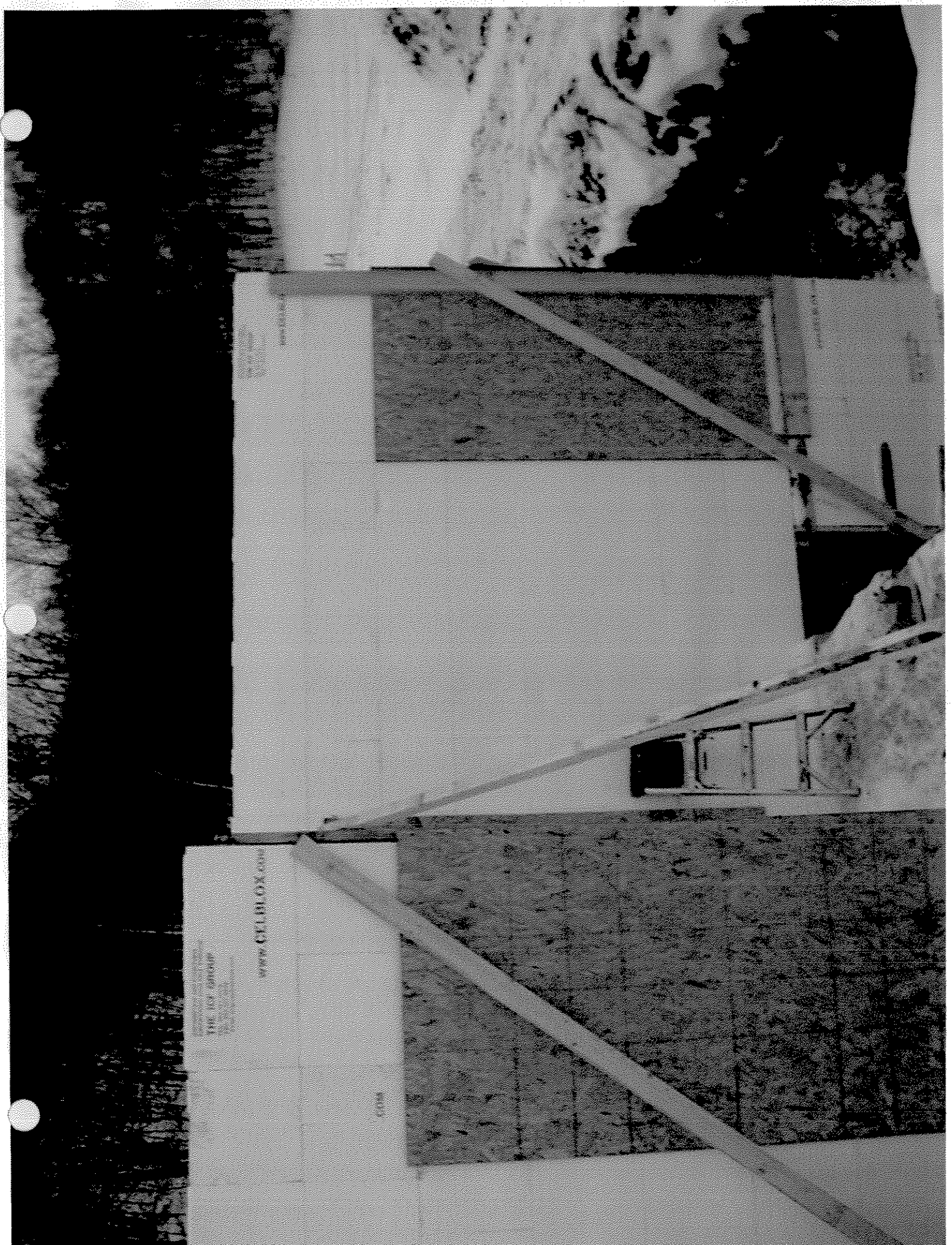
Cell Phone: 608.963.5551

E-Mail: [bpace@pace-industries-inc.com](mailto:bpace@pace-industries-inc.com)



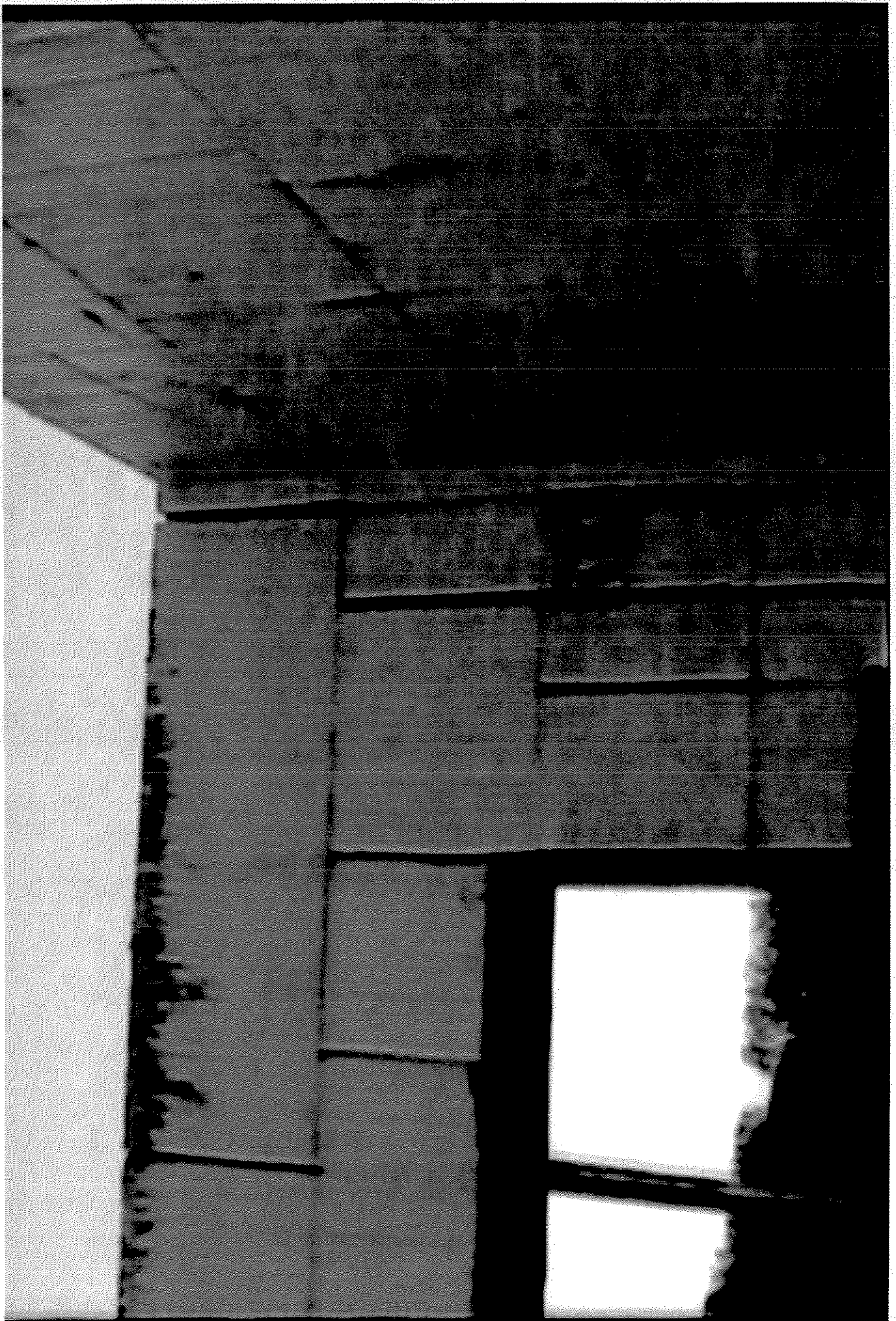


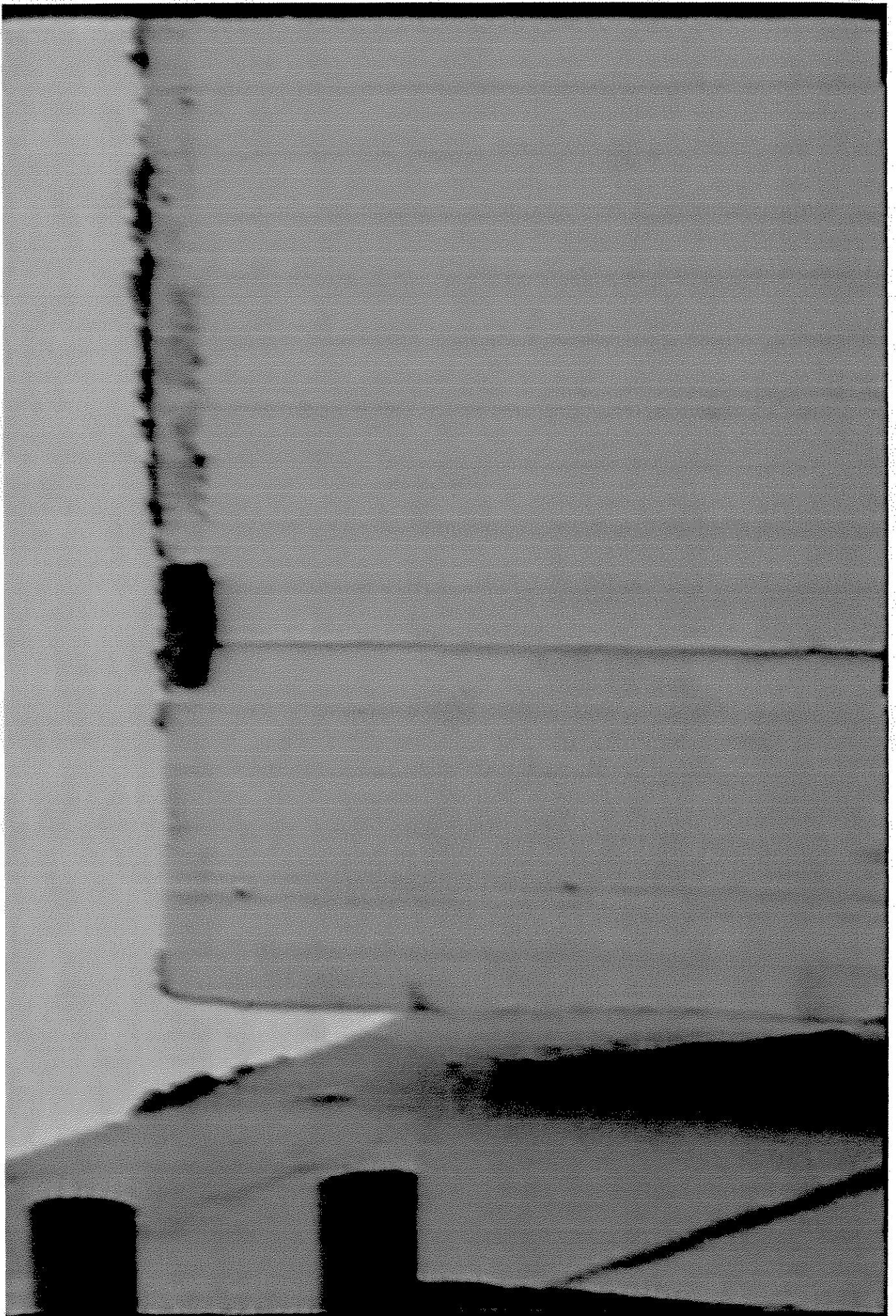




THE  
www.CELBLOCK.com

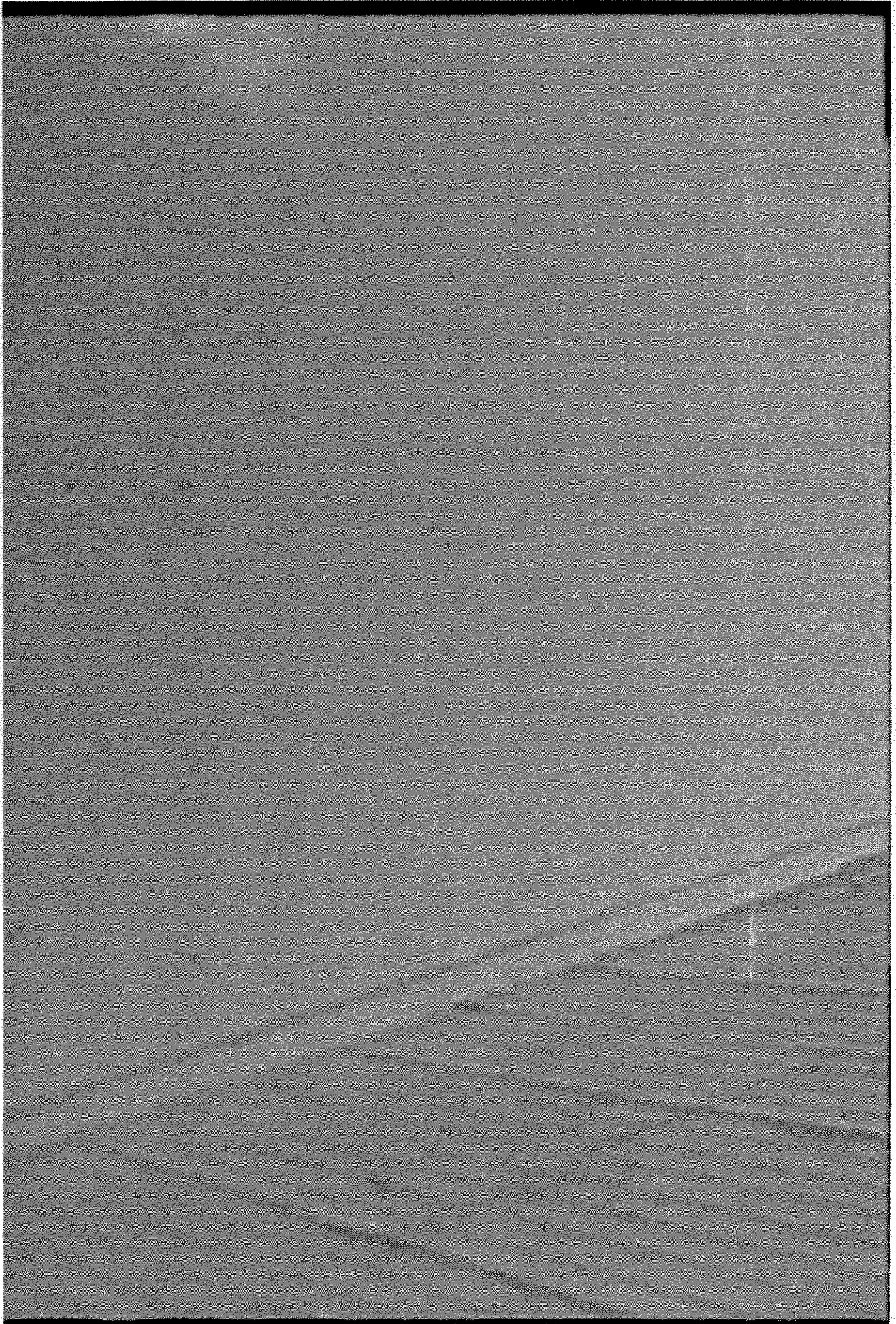
5108

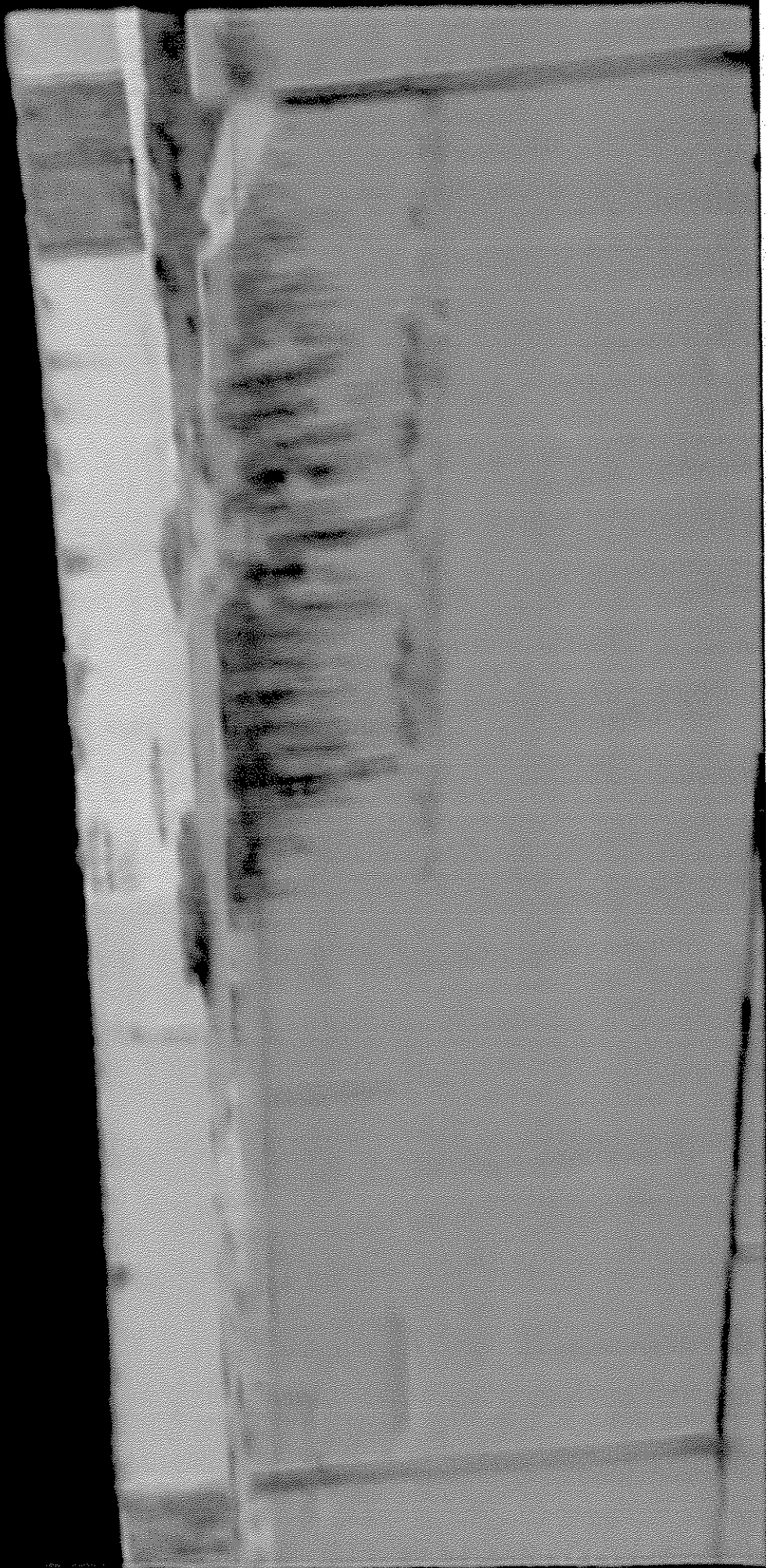


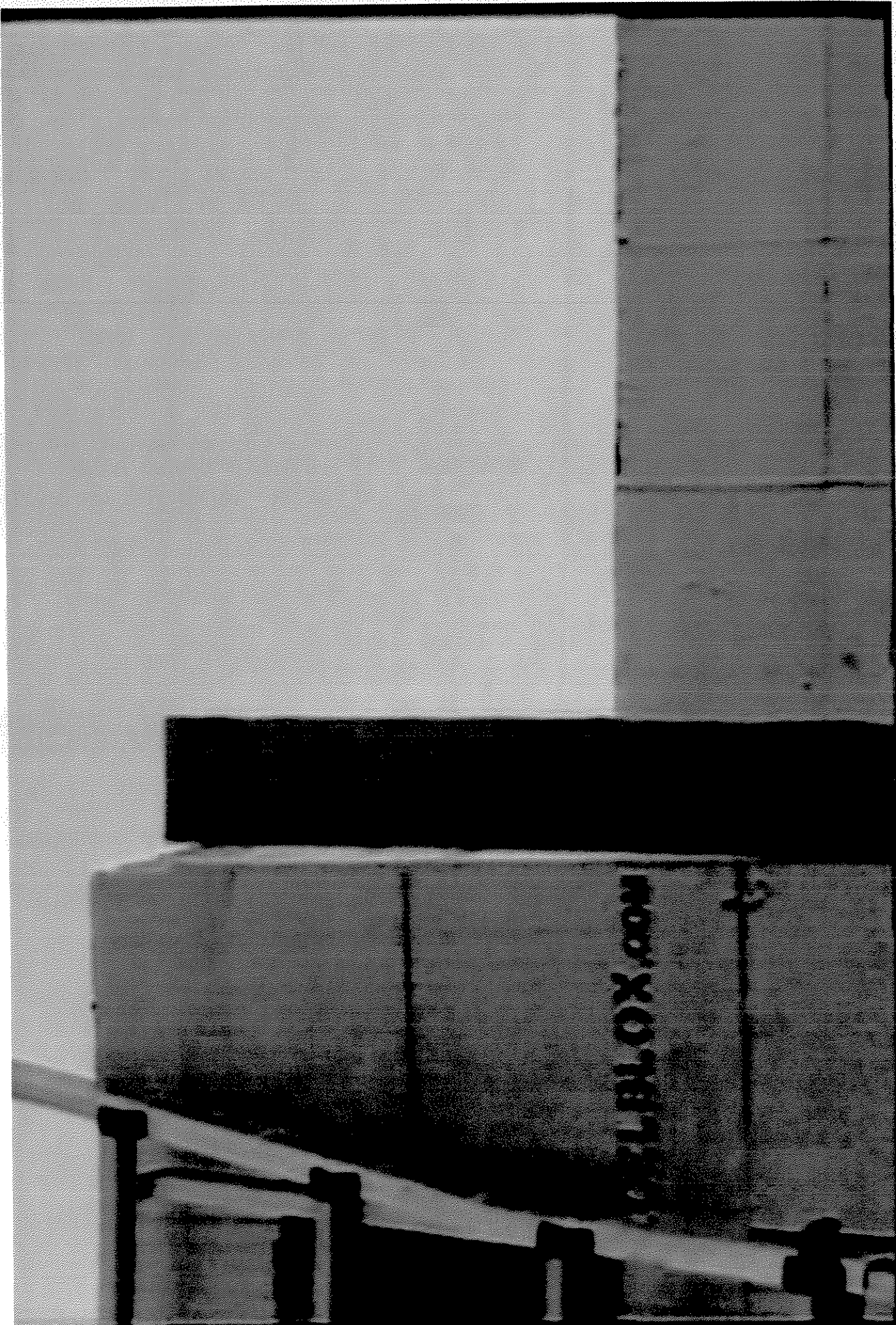












XOXO.COM

