

# **07hr\_AC-Ag\_Misc\_pt09**



Details: Informational Hearing (November 29, 2007)

(FORM UPDATED: 07/12/2010)

## **WISCONSIN STATE LEGISLATURE ... PUBLIC HEARING - COMMITTEE RECORDS**

### **2007-08**

(session year)

### **Assembly**

(Assembly, Senate or Joint)

### **Committee on ... Agriculture (AC-Ag)**

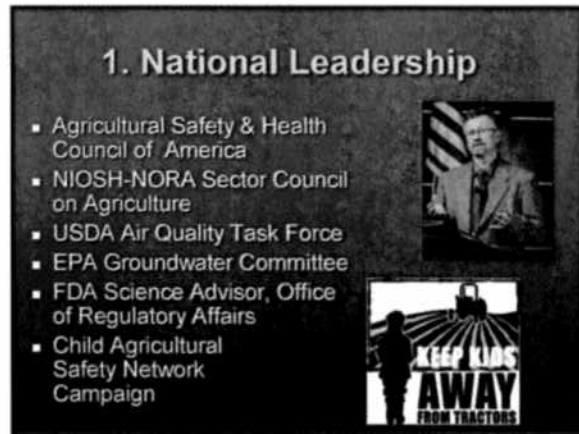
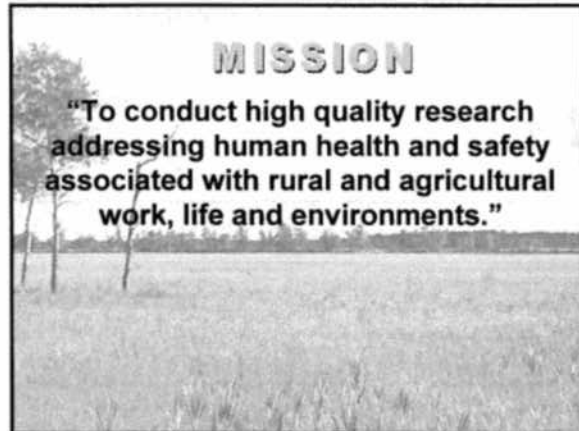
#### **COMMITTEE NOTICES ...**

- Committee Reports ... **CR**
- Executive Sessions ... **ES**
- Public Hearings ... **PH**
- Record of Comm. Proceedings ... **RCP**

#### **INFORMATION COLLECTED BY COMMITTEE FOR AND AGAINST PROPOSAL**

- Appointments ... **Appt**
  - Clearinghouse Rules ... **CRule**
  - Hearing Records ... bills and resolutions
    - (**ab** = Assembly Bill)                      (**ar** = Assembly Resolution)
    - (**sb** = Senate Bill)                            (**sr** = Senate Resolution)
  - Miscellaneous ... **Misc**
- (**ajr** = Assembly Joint Resolution)  
(**sjr** = Senate Joint Resolution)

80%<sup>10</sup>  
Research



#### 4. Communication Link

- Internet
- Journalist Workshops
- Newsletters
- Issue Briefs
- Journal of Agromedicine



#### 5. Farmers' support



#### Core Units

- Administration
- Outreach
- Agromedicine
- Public Health Microbiology
- Agricultural Safety Engineering
- National Children's Center

#### NFMC outreach

- Web sites
- Media contacts
- Regional events
- Newsletter
- Technical assistance
- Advisory roles



#### Agromedicine

- Editor, *Journal of Agromedicine*
- Member, USDA Air Quality Task Force
- Advisory Panel: Nat'l Pork Board - Worker Safety and Public Health Committee
- WI Academy of Science Future of Farming; Chair of Health Recommendations



Steven Kirkhorn, MD

### Public Health Microbiology/ Infectious Disease

Research emphases:

- Waterborne pathogens
- Antibiotic resistance in pathogens of livestock and humans
- Working with Wisconsin DNR; Institute for Environmentally Integrated Dairy Management



Mark Borchardt, PhD

### Public Health Microbiology/ Infectious Disease

Research emphases:

- Development of non-antimicrobial means to control pathogens on the farm
- Characterization of pathogenicity and antimicrobial resistance in *Salmonella*
- Identification of markers for *Escherichia coli* source tracking



Steve Foley, PhD

### Agricultural Safety Engineering & Policy

- Promotes safer farming through research, education, design and policy
- Prevention of traumatic injuries involving machinery, other engineered farm systems
- Policies relating to safer machinery



Mark Purschwitz, PhD

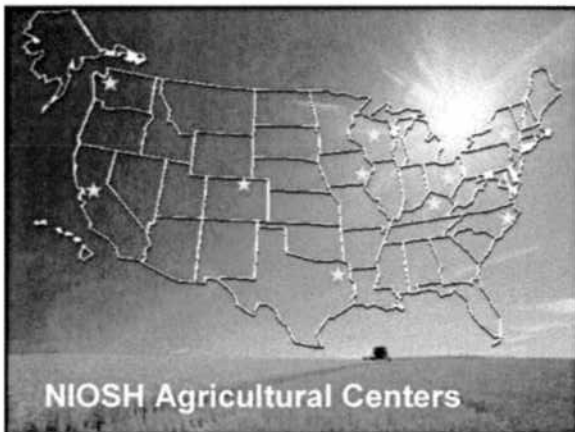
### National Children's Center for Rural and Agricultural Health and Safety

- Funded since 1997 by National Institute for Occupational Safety and Health (NIOSH)\*
- Includes components of outreach, education, training, prevention/interventions, and research



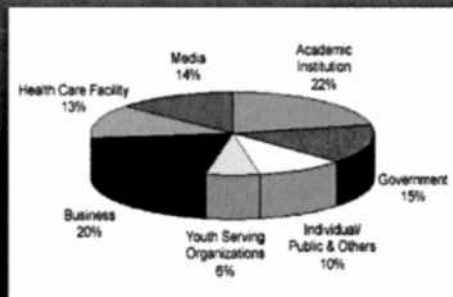
Barbara Lee, PhD

\* NIOSH award no. US0/OH008107



NIOSH Agricultural Centers

### Technical Assistance Requests by Customers



### AgriTourism Guidelines

- Establish health and safety recommendations specific to children
- Provide practical tips for handling child visitors on farm
- Publish user-friendly guidebook
- Disseminate via Internet, presentations, convention exhibits



Tammy Ellis, BS



### Safe Play Areas on Farms

- Large proportion (>50%) of injuries and fatalities affect non-working youth
- Safe play area an option when off-site childcare not available
- Guidance report published
- Held interactive demonstration at '05 WI Farm Technology Days



Regina Fisher, BS



*Common & Request of Industry*

### NAGCAT

- North American Guidelines for Children's Agricultural Tasks (NAGCAT) developed in 1999
- Accepted by farm organizations
- Widely disseminated
- International applications
- www.nagcat.org



### Teen Worker Guidelines

- Released in 2008
- Resource for labor intensive agriculture
- Facilitate regulatory compliance
- Distribute via agribusiness, labor organizations



**Safety Guidelines**  
Hired Adolescent Farm Workers

### Journalists Workshop

- Develop informed cadre of journalists promoting childhood agricultural safety
- 40 journalists have attended workshops in Wisconsin, New York, Washington, Kentucky



Scott Heiberger, BS

### Child Ag Safety Network

- Network of 14 national organizations focused on children &/or farm safety
- To strengthen partnerships and avoid duplication
- www.childagsafety.org



## Policy – Relevant Research

- WI State Youth Tractor Operator Laws
- Youth Tractor Crashes on Public Roads: Impact of Wisconsin Law
- Removing HOOA Family Farm Exemption: Impact on Injury



Barbara Marfenga, PhD

## Research Methods

- Qualitative and quantitative approaches
- Ergonomic assessment tools
- Cross-disciplinary safety research
- Informatics-agricultural injury prevention

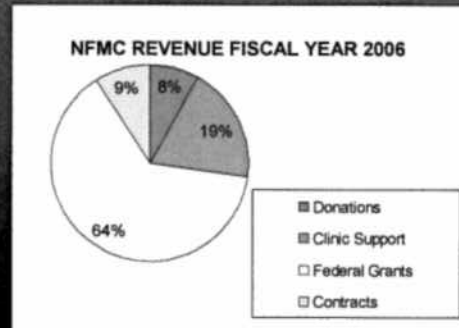


Marcy Fitz-Randolph, DO, PhD-C

## NFMC Funding

- Federal grants
- Marshfield Clinic
- Endowments
- Auction of Champions
- Donations
- Other gifts

## NFMC Revenue '06



### Remember

1. National Leadership
2. Childhood Agricultural Injury Prevention
3. Leading-Edge Research
4. Communication Link
5. Farmers Support

## NFMC and Wisconsin

- Current roles w/
  - WI Academy of Sciences
  - Coop. Extension
  - USDA/ARS Research
  - DNR
  - UW-CALS
  - UW-Medicine & Public Health
  - Other



### Wisconsin Farm-Related Fatalities: 1996-2005

Fatalities	1996	1997	1998	1999	2000	2001	2002	2003	2004	2005	Total
Number	35	41	29	26	32	29	24	37	25	30	308
Rate*	31	39	28	27	35	33	29	48	35	45	34

\* ( per 100,000 workers )

Annual farm-related fatality statistics published by the University of Wisconsin Center for Agricultural Safety and Health

Summary provided by the National Farm Medicine Center (Nov. 2007)

Funding made possible by Great Plains Center for Agricultural Health in Iowa City, IA

### Types of Farm-Related Fatalities in Wisconsin

Fatalities	1996	1997	1998	1999	2000	2001	2002	2003	2004	2005	Totals
Tractors	12	11	15	13	11	11	7	10	7	16	113
Farm Machines	11	10	8	7	12	5	7	12	5	3	80
Animals	3	7	1	1	6	1	2	5	7	4	37
Falls	4	5	1	0	0	5	0	4	3	3	26
Confined Spaces	2	2	2	1	0	1	2	0	2	2	14
Trucks/Vehicles	0	1	0	0	1	1	0	0	0	1	4
Other	3	4	2	4	2	5	6	6	1	1	34
Total	35	41	29	26	32	29	24	37	25	30	308

### Age of Victims in Wisconsin

Age	1996	1997	1998	1999	2000	2001	2002	2003	2004	2005	Total
0-4	2	3	2	2	2	3	2	1	2	1	20
5-9	4	1	1	0	1	0	0	0	1	2	10
10-14	0	2	1	2	1	0	4	4	0	0	14
15-19	3	0	4	2	1	0	0	2	1	0	13
20-24	0	1	0	2	0	0	1	0	2	2	8
25-44	4	12	5	3	1	6	4	5	2	3	46
45-64	14	10	8	9	14	10	7	12	11	7	102
65+	8	12	8	6	12	10	6	13	5	15	95
Total	35	41	29	26	32	29	24	37	25	30	308

### Gender of Victims in Wisconsin

Gender	1996	1997	1998	1999	2000	2001	2002	2003	2004	2005	Totals
Female	2	4	1	1	1	1	0	3	3	3	19
Male	33	37	28	25	31	28	24	34	22	27	289

### NFMC and Wisconsin

- Future opportunities
  - Set goals for health and safety of agricultural workers and rural residents in Wisconsin
- Implement actions via partnerships
  - Research
  - Education
  - Outreach
  - Policy briefs
  - Other



### Contact us

National Farm Medicine Center  
Marshfield, WI

<http://marshfieldclinic.org/nfmc/>  
1-800-662-6900

Barbara Lee, RN, PhD Director  
Steven Kirkhorn, MD, MPH Medical Director





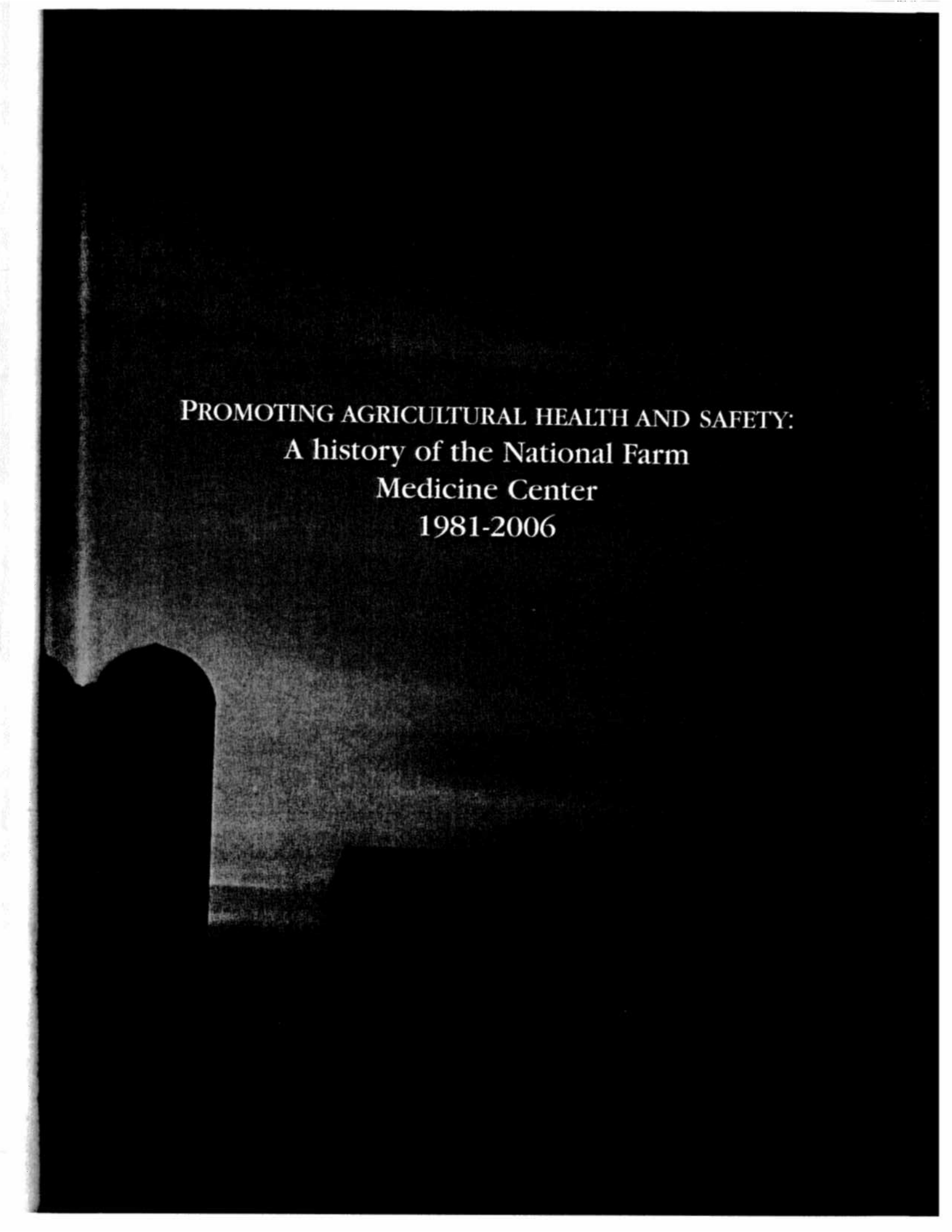
PROMOTING AGRICULTURAL HEALTH AND SAFETY:

A history of the National Farm  
Medicine Center



National  
**Farm**Medicine  
Center.

Added To The  
LRB Library  
collection



PROMOTING AGRICULTURAL HEALTH AND SAFETY:  
A history of the National Farm  
Medicine Center  
1981-2006

#### TITLE

Promoting agricultural health and safety:  
A history of the National Farm Medicine Center

#### AUTHOR

Joseph J. Mazza

#### DEDICATION

This 25-year history of the National Farm Medicine Center is dedicated to Dean Emanuel, M.D. It was his vision and sentinel research addressing illnesses unique to the farm environment that sparked the emergence of a new discipline of medicine, now called Agromedicine.

#### ACKNOWLEDGEMENTS

The following individuals provided valuable information essential for preparation of this document: Bob Carlson, Jay Ellingson, Dean Emanuel, Paul Gunderson, Bill Hocking, Bob Intress, Barbara Lee, Dick Leer, Russ Lewis, George Magnin, Jim Marx, John McCarty, Bill Mineau and Fritz Wenzel. I am also grateful to the staff of the George E. Magnin Medical Library and the National Farm Medicine Center for assistance in securing records, photographs and newspaper clippings to augment the oral history provided by others. The document preparation and editing was facilitated through the diligent efforts of Linda Weis and Ginny Mazza. The final steps of production were guided by editors Scott Heiberger and Rebecca Normington, and graphic designer Erik Borreson. I sincerely appreciate the many individuals who provided insights and assistance as the rich history of the NFMC was unfolded for my review and documentation.

#### FOR ADDITIONAL COPIES

Contact the National Farm Medicine Center  
Telephone: 1-800-662-6900 or 715-389-4999  
Internet: <http://www.marshfieldclinic.org/nfmc>

#### RECOMMENDED CITATION

Mazza JJ. Promoting agricultural health and safety: A history of the National Farm Medicine Center. Marshfield, WI: Marshfield Clinic, 2006.

Newspaper clippings courtesy of *Marshfield News-Herald*, *Wausau Daily Herald*, *Gempler's*, *Loyal Tribune-Record-Gleaner*.

# TABLE OF CONTENTS

## CHAPTER I

### The Concept of a Center

Page 1

## CHAPTER II

### Birth of the National Farm Medicine Center

Page 7

## CHAPTER III

### Growing Up

Page 9

## CHAPTER IV

### National Recognition

Page 16

## CHAPTER V

### Winds of Change

Page 26

## CHAPTER VI

### New Millenium

Page 29

## CHAPTER VII

### Funding the Mission

Page 37

## Milestones

Page 40

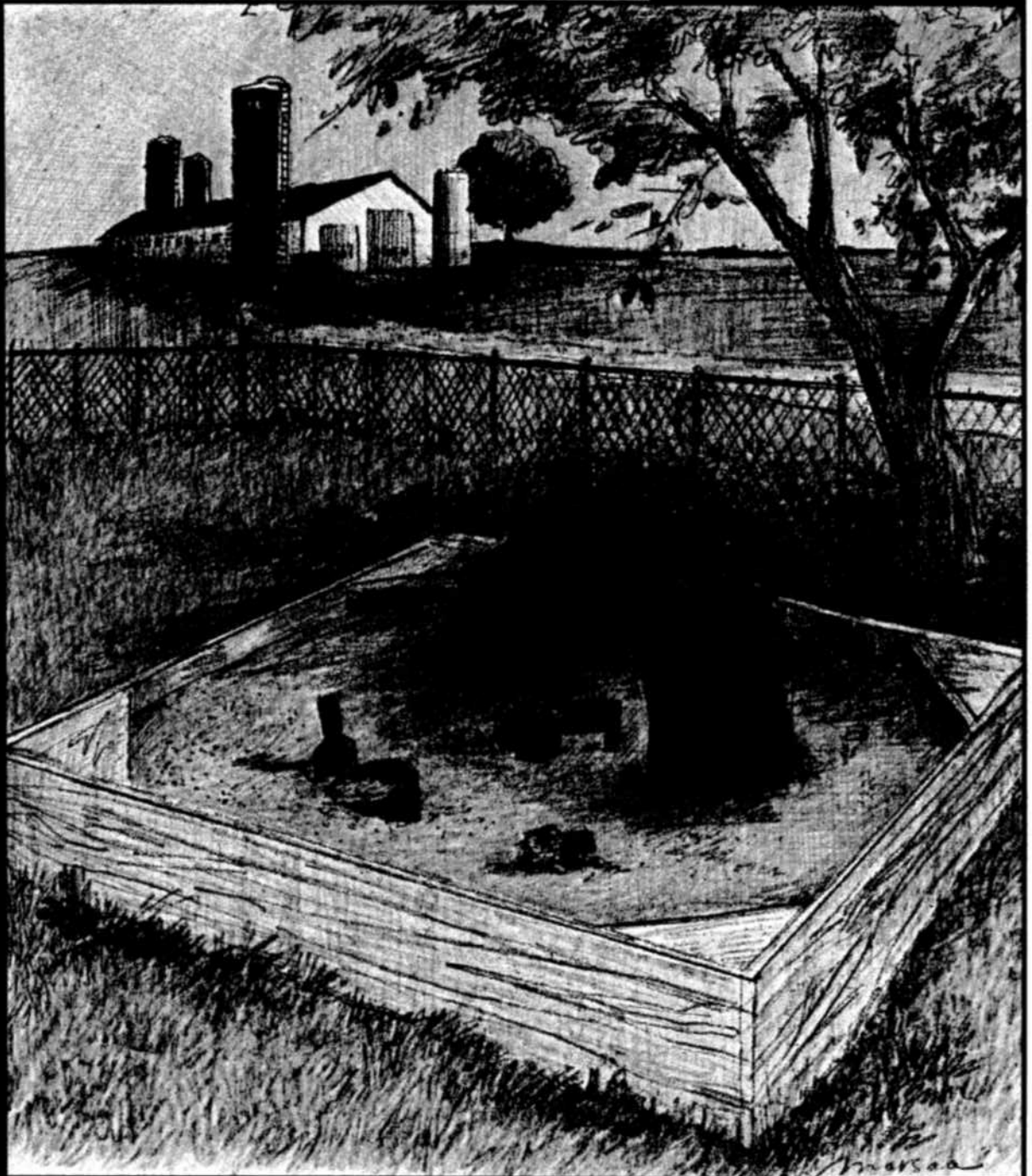


# Creating Safe Play Areas on Farms

Second Edition



National Children's Center  
for Rural and Agricultural Health and Safety



Added To The  
LRB Library  
Collection



National  
**Farm**Medicine  
Center.



**MARSHFIELD CLINIC.**  
Research Foundation

# Table of Contents

Introduction .....	2
What is a Safe Play Area? .....	4
Why are Some Play Areas NOT Safe? .....	6
What are the Elements of Effective Supervision? .....	7
How Does Play Help Children Develop? .....	9
What Environmental Factors Should be Considered? .....	11
What are Some Specific Play Ideas that can be Modified for a Farm? .....	13
How is a Play Area Prepared, Maintained and Improved? .....	18
What are the Six Steps for Creating a Safe Play Area? .....	21
Professional and Parent Resources .....	22
Project Advisors .....	24
Stakeholder Recommendations .....	25
Childhood Growth and Development Chart .....	26
Play Area Design Worksheets .....	28

2004

***Every child  
deserves a safe  
place to play.***

