

In on

	2009-10	2010-11
Total Available for Property Tax Relief		
Opening Balance	\$ 9,338,100	\$ 9,753,000
Net Proceeds	134,608,200	130,995,000
Interest Earnings	531,500	1,694,500
Gaming-related Revenue	<u>306,600</u>	<u>306,600</u>
	\$ 144,784,400	\$ 142,749,100
Property Tax Relief	\$ 135,031,400	\$ 133,167,000
Gross Closing Balance	\$ 9,753,000	\$ 9,582,100
Reserve	\$ <u>9,753,000</u>	\$ <u>9,582,100</u>
Net Closing Balance	\$ -0-	\$ -0-

2nd Round

1
2
3
4
5
6
7
8

SECTION 175. 20.005 (2) of the statutes is repealed and recreated to read:

20.005 (2) STATE BORROWING PROGRAM SUMMARY. The following schedule sets forth the state borrowing program summary: [See Figures 20.005 (2) (a) and (b) following]

Figure: 20.005 (2) (a)

**SUMMARY OF BONDING AUTHORITY MODIFICATIONS
2009-11 FISCAL BIENNIUM**

Source and Purpose	Amount
--------------------	--------

GENERAL OBLIGATIONS

Administration

Energy conservation projects	\$ 50,000,000
------------------------------	---------------

Agriculture, Trade and Consumer Protection

Source and Purpose	Amount
Soil and water	7,000,000
Conservation reserve enhancement	-12,000,000
Agricultural conservation easements	12,000,000
Building Commission	
Refunding tax-supported <i>and self-amortizing</i> general obligation debt incurred before July 1, 2011	300,000,000 309,000,000
Housing state departments and agencies	50,246,600
Other public purposes	220,850,000
AIDS Resource Center of Wisconsin, Inc.	800,000
Bradley Center Sports and Entertainment Corporation	5,000,000
AIDS Network, Inc.	300,000
Myrick Hixon EcoPark, Inc.	500,000
Madison Children's Museum	250,000
Grand Opera House in Oshkosh	500,000
Aldo Leopold climate change classroom and interactive laboratory	500,000
Corrections	
Correctional facilities	7,564,900
Self-amortizing facilities and equipment	5,442,900
Environmental Improvement Fund	
Clean water fund program	79,400,000
Safe drinking water loan program	7,000,000
Health Services	
Mental health and secure treatment facilities	-1,867,600
Historical Society	
Historic records	8,000,000
Historic sites	6,960,000

Source and Purpose	Amount
Military Affairs	
Armories and military facilities	18,642,800
Natural Resources	
Nonpoint source	7,000,000
Urban nonpoint source cost-sharing	6,000,000
Contaminated sediment removal	5,000,000
Environmental segregated fund supported administrative facilities	502,700
Segregated revenue supported facilities	7,476,300
Dam safety projects	4,000,000
Transportation	
Rail passenger route development	40,000,000
Southeast Wisconsin transit improvements	100,000,000
Marquette interchange and I 94 north-south corridor reconstruction projects	250,250,000
State highway rehabilitation projects	204,712,200
Major highway projects	189,712,200
State highway rehabilitation, certain projects	50,000,000
Harbor improvements	60,000,000
Rail acquisitions and improvements	12,700,000
Major interstate bridge construction	60,000,000
→	225,000,000
University of Wisconsin System	
Academic facilities	954,620,700
Self-amortizing facilities	326,551,000
	569,928,600
Veterans Affairs	
Self-amortizing mortgage loans	195,000,000
Self-amortizing facilities	<u>318,500</u>
TOTAL General Obligation Bonds	\$ 2,629,598,600
	2,900,523,900

Source and Purpose	Amount
REVENUE OBLIGATIONS	
Environmental Improvement Fund	
Clean water fund program	\$ 379,200,000
Transportation	
Major highway projects, transportation facilities	<u>\$ 301,443,200</u>
TOTAL Revenue Obligation Bonds	\$ 680,643,200
GRAND TOTAL	\$ 3,310,241,300 \$ 3,581,172,100

1
2
3

Figure: 20.005 (2) (b)

**GENERAL OBLIGATION DEBT SERVICE
FISCAL YEARS 2009-10 AND 2010-11**

STATUTE, AGENCY AND PURPOSE	SOURCE	2009-10	2010-11
20.115 Agriculture, trade and consumer protection, department of			
(2) (d) Principal repayment and interest	GPR	\$ 11,700	\$ 10,800
(7) (b) Principal repayment and interest, conservation reserve enhancement	GPR	2,020,100	3,036,400
(7) (br) Principal repayment and interest; agricultural conservation easements	GPR	-0-	-0-
20.190 State fair park board			
(1) (c) Housing facilities principal repayment, interest and rebates	GPR	900,700	929,500
(1) (d) Principal repayment and interest	GPR	1,587,800	1,582,400

STATUTE, AGENCY AND PURPOSE	SOURCE	2009-10	2010-11
20.225 Educational communications board			
(1) (c) Principal repayment and interest	GPR	2,626,600	2,712,100
20.245 Historical society			
(1) (e) Principal repayment, interest, and rebates	GPR	2,131,900	2,782,000
20.250 Medical College of Wisconsin			
(1) (c) Principal repayment, interest, and rebates; biomedical research and technology incubator	GPR	2,036,300	2,180,300
(1) (e) Principal repayment and interest	GPR	162,700	162,300
20.255 Public instruction, department of			
(1) (d) Principal repayment and interest	GPR	1,076,200	873,900
20.285 University of Wisconsin System			
(1) (d) Principal repayment and interest	GPR	151,465,800	155,373,800
(1) (db) Self-amortizing facilities principal and interest	GPR	-0-	-0-
20.320 Environmental improvement program			
(1) (c) Principal repayment and interest - clean water fund program	GPR	37,592,300	51,113,800
(2) (c) Principal repayment and interest - safe drinking water loan program	GPR	2,951,900	3,101,200
20.370 Natural resources, department of			
(7) (aa) Resource acquisition and development - principal repayment and interest	GPR	45,504,400	54,664,500
(7) (ac) Principal repayment and interest - recreational boating bonds	GPR	-0-	-0-

STATUTE, AGENCY AND PURPOSE	SOURCE	2009-10	2010-11
(7) (cb) Principal repayment and interest - pollution abatement bonds	GPR	35,254,700	16,881,600
(7) (cc) Principal repayment and interest - combined sewer overflow; pollution abatement bonds	GPR	11,442,100	8,360,500
(7) (cd) Principal repayment and interest - municipal clean drinking water grants	GPR	856,400	860,400
(7) (ea) Administrative facilities - principal repayment and interest	GPR	837,400	854,500
20.395 Transportation, department of			
(6) (af) Principal repayment and interest, local roads for job preservation program, transit improvements, and major highway and rehabilitation projects, state funds	GPR	73,706,600 73,889,400	79,777,500 81,921,400
20.410 Corrections, department of			
(1) (e) Principal repayment and interest	GPR	82,651,900	80,232,000
(1) (ec) Prison industries principal, interest and rebates	GPR	-0-	-0-
(3) (e) Principal repayment and interest	GPR	4,750,900	4,670,500
20.435 Health services, department of			
(2) (ee) Principal repayment and interest	GPR	16,207,000	16,014,700
20.465 Military affairs, department of			
(1) (d) Principal repayment and interest	GPR	4,437,700	4,464,800
20.485 Veterans affairs, department of			
(1) (f) Principal repayment and interest	GPR	1,616,100	1,598,200

STATUTE, AGENCY AND PURPOSE	SOURCE	2009-10	2010-11
20.505 Administration, department of			
(4) (es) Principal, interest, and rebates; general purpose revenue - schools	GPR	4,349,800	4,342,400
(4) (et) Principal, interest, and rebates; general purpose revenue - public library boards	GPR	11,400	11,000
(5) (c) Principal repayment and interest; Black Point Estate	GPR	94,700	107,800
20.855 Miscellaneous appropriations			
(8) (a) Dental clinic and education facility; principal repayment, interest and rebates	GPR	996,000	991,000
20.867 Building commission			
(1) (a) Principal repayment and interest; housing of state agencies	GPR	-0-	-0-
(1) (b) Principal repayment and interest; capitol and executive residence	GPR	13,217,800	12,990,800
(3) (a) Principal repayment and interest	GPR	14,004,600	33,966,500
(3) (b) Principal repayment and interest	GPR	1,418,200	2,080,000
(3) (bb) Principal repayment, interest, and rebates; AIDS Network, Inc.	GPR	-0-	-0-
(3) (bc) Principal repayment, interest, and rebates; Grand Opera House in Oshkosh	GPR	-0-	-0-
(3) (bd) Principal repayment, interest, and rebates; Aldo Leopold climate change classroom and interactive laboratory	GPR	-0-	-0-

STATUTE, AGENCY AND PURPOSE	SOURCE	2009-10	2010-11
(3) (be) Principal repayment, interest, and rebates; Bradley Center Sports and Entertainment Corporation	GPR	-0-	-0-
(3) (bf) Principal repayment, interest, and rebates; AIDS Resource Center of Wisconsin, Inc.	GPR	-0-	-0-
(3) (bg) Principal repayment, interest, and rebates; Madison Children's Museum	GPR	-0-	-0-
(3) (bh) Principal repayment, interest, and rebates; Myrick Hixon EcoPark, Inc.	GPR	-0-	-0-
(3) (bm) Principal repayment, interest, and rebates; HR Academy, Inc.	GPR	116,900	117,100
(3) (bn) Principal repayment, interest and rebates; Hmong cultural centers	GPR	44,500	137,100
(3) (bp) Principal repayment, interest and rebates	GPR	-0-	-0-
(3) (bq) Principal repayment, interest and rebates; children's research institute	GPR	646,700	801,000
(3) (br) Principal repayment, interest and rebates	GPR	84,700	85,500
(3) (bu) Principal repayment, interest and rebates; Civil War exhibit at the Kenosha Public Museums	GPR	26,900	26,900
(3) (bv) Principal repayment, interest, and rebates; Bond Health Center	GPR	15,000	58,600
(3) (e) Principal repayment, interest and rebates; parking ramp	GPR	-0-	-0-

TOTAL General Purpose Revenue Debt Service

\$ 516,856,400	\$ 547,959,400
517,039,200	549,368,300

STATUTE, AGENCY AND PURPOSE	SOURCE	2009-10	2010-11
20.190 State Fair Park Board			
(1) (i) State fair capital expenses	PR	\$ -0-	\$ -0-
(1) (j) State fair principal repayment, interest and rebates	PR	3,635,500	3,760,500
20.225 Educational communications board			
(1) (i) Program revenue facilities; principal repayment, interest, and rebates	PR	13,500	13,500
20.245 Historical society			
(1) (j) Self-amortizing facilities; principal repayment, interest, and rebates	PR	52,100	25,100
20.285 University of Wisconsin System			
(1) (in) Payment of debt service; University of Wisconsin-Platteville tri-state initiative facilities	PR	-0-	-0-
(1) (jq) Steam and chilled-water plant; principal repayment, interest, and rebates; nonstate entities	PR	883,600	885,000
(1) (kd) Principal repayment, interest and rebates	PR	74,499,600	81,817,700
(1) (km) Aquaculture demonstration facility; principal repayment and interest	PR	-0-	-0-
(1) (ko) Steam and chilled-water plant; principal repayment, interest, and rebates	PR	5,006,700	5,014,600
20.370 Natural resources, department of			
(7) (ag) Land acquisition - principal repayment and interest	PR	-0-	-0-
(7) (cg) Principal repayment and interest - nonpoint repayments	PR	-0-	-0-

STATUTE, AGENCY AND PURPOSE	SOURCE	2009-10	2010-11
20.410 Corrections, department of			
(1) (ko) Prison industries principal repayment, interest and rebates	PR	262,800	432,800
20.485 Veterans affairs, department of			
(1) (go) Self-amortizing facilities; principal repayment and interest	PR	1,456,500	1,891,300
20.505 Administration, department of			
(4) (ha) Principal, interest, and rebates; program revenue - schools	PR	1,056,000	1,032,400
(4) (hb) Principal, interest, and rebates; program revenue - public library boards	PR	5,200	5,200
(5) (g) Principal repayment, interest and rebates; parking	PR	1,768,400	1,775,600
(5) (kc) Principal repayment, interest and rebates	PR	20,316,300	22,401,000
(5) (kd) Energy conservation construction projects; principal repayment, interest and rebates	PR	891,400	2,118,400
20.867 Building commission			
(3) (g) Principal repayment, interest and rebates; program revenues	PR	-0-	-0-
(3) (h) Principal repayment, interest, and rebates	PR	-0-	-0-
(3) (i) Principal repayment, interest and rebates; capital equipment	PR	-0-	-0-
TOTAL Program Revenue Debt Service		\$ 109,847,600	\$ 121,173,100

STATUTE, AGENCY AND PURPOSE	SOURCE	2009-10	2010-11
20.115 Agriculture, trade and consumer protection, department of			
(7) (s) Principal repayment and interest; soil and water, environmental fund	SEG	\$ 2,425,600	\$ 2,563,300
(7) (tb) Principal and interest; agricultural conservation easements, working lands fund	SEG	-0-	-0-
20.320 Environmental improvement program			
(1) (t) Principal repayment and interest - clean water fund program bonds	SEG	15,000,000	9,000,000
20.370 Natural resources, department of			
(7) (aq) Resource acquisition and development - principal repayment and interest	SEG	89,800	1,000
(7) (ar) Dam repair and removal - principal repayment and interest	SEG	497,100	532,200
(7) (at) Recreation development - principal repayment and interest	SEG	-0-	-0-
(7) (au) State forest acquisition and development - principal repayment and interest	SEG	18,500,000	16,000,000
(7) (bq) Principal repayment and interest - remedial action	SEG	4,077,000	4,352,700
(7) (br) Principal repayment and interest - contaminated sediment	SEG	464,000	635,200
(7) (cq) Principal repayment and interest - nonpoint source grants	SEG	7,695,300	7,981,100
(7) (cr) Principal repayment and interest - nonpoint source	SEG	657,000	806,600
(7) (cs) Principal repayment and interest - urban nonpoint source cost-sharing	SEG	2,240,500	2,557,900

JFK

STATUTE, AGENCY AND PURPOSE	SOURCE	2009-10	2010-11
(7) (ct) Principal and interest - pollution abatement, environmental fund	SEG	-0-	8,000,000
(7) (eq) Administrative facilities - principal repayment and interest	SEG	4,511,500	5,625,700
(7) (er) Administrative facilities - principal repayment and interest; environmental fund	SEG	639,800	743,800

20.395 Transportation, department of

(6) (aq) Principal repayment and interest, transportation facilities, major highway projects, state funds	SEG	7,509,300	12,533,100
(6) (ar) Principal repayment and interest, buildings, state funds	SEG	4,100	4,100
(6) (au) Principal repayment and interest, Marquette interchange and I 94 north-south corridor reconstruction projects, state funds	SEG	22,661,700	25,836,800

20.485 Veterans affairs, department of

(3) (t) Debt service	SEG	26,264,200	26,257,800
(4) (qm) Repayment of principal and interest	SEG	89,300	89,700

20.867 Building commission

(3) (q) Principal repayment and interest; segregated revenues	SEG	-0-	-0-
---	-----	-----	-----

TOTAL Segregated Revenue Debt Service \$ 113,326,200 \$ 123,541,000

GRAND TOTAL All Debt Service

~~\$ 740,090,200~~ ~~\$ 792,667,500~~
 [740,213,000] [794,092,400]

1
2

SECTION 176. 20.005 (3) of the statutes is repealed and recreated to read:



1 SECTION 3416d. 2009 Wisconsin Act 2, section 9201 (1) (b) is amended to read:

2 [2009 Wisconsin Act 2] Section 9201 (1) (b) Notwithstanding section 20.001 (3)
3 (a) to (c) and 25.40 (3) of the statutes, but subject to paragraph (c), the secretary of
4 administration shall lapse or transfer to the general fund from the unencumbered
5 balances of appropriations to executive branch state agencies, other than sum
6 sufficient appropriations and appropriations of federal revenues, an amount equal
7 to \$125,000,000 before July 1, 2011, less the amount lapsed under paragraph (c) 3.
8 The amounts lapsed or transferred under this paragraph shall be in addition to the
9 amounts lapsed or transferred under 2007 Wisconsin Act 20, section 9201 (1c) (a) to
10 (c). The amount required to be lapsed or transferred under this paragraph is
11 increased by an additional \$334,107,600 from available balances in appropriations
12 and funds.

\$ 354,807,600

13 SECTION 3416f. 2009 Wisconsin Act 2, section 9201 (1) (c) 3. is amended to read:

14 [2009 Wisconsin Act 2] Section 9201 (1) (c) 3. The cochairpersons of the joint
15 committee on legislative organization shall take actions before July 1, 2011, to
16 ensure that from general purpose revenue appropriations to the legislature under
17 section 20.765 of the statutes an amount equal to \$500,000 is lapsed from sum
18 certain appropriation accounts or is subtracted from the expenditure estimates for
19 any other types of appropriations, or both. The amount required to be lapsed or
20 subtracted under this subdivision is increased by an additional \$12,205,000.

21 SECTION 3416fm. 2009 Wisconsin Act 15, section 31 (1) (a) 2. is amended to
22 read:

23 [2009 Wisconsin Act 15] Section 31 (1) (a) 2. "County department" means the
24 Milwaukee County department of social services under section 49.215 ~~46.215~~ of the
25 statutes.

Handwritten initials in a circle.

IN ON 2ND REV

CC Done



JTK

In on 2nd round

1	2. Agency totals:	
2	Segregated fund supported revenue borrowing	<u>3,959,900</u>
3	Total — All sources of funds	\$ 3,959,900

(g) UNIVERSITY OF WISCONSIN SYSTEM

1. Projects financed by general fund supported borrowing:

7	Eau Claire — Education building	\$ 44,000,000
---	---------------------------------	---------------

8 (Total project all funding sources \$44,500,000)

9	Madison — School of Nursing	28,069,700
---	-----------------------------	------------

10 (Total project all funding sources \$47,346,000)

11	— Utility improvements	70,021,800
----	------------------------	------------

12 (Total project all funding sources \$78,374,000)

13	— Wisconsin Energy Institute	50,000,000
----	------------------------------	------------

14 (Total project all funding sources \$100,000,000)

16	— Wisconsin Institutes for Medical Research	67,400,000
----	---	------------

18 (Total project all funding sources \$134,800,000)

20	Milwaukee — Utility improvements	5,449,200
----	----------------------------------	-----------

21 (Total project all funding sources \$6,419,000)

22	Stevens Point — Utility improvements	1,000,000
----	--------------------------------------	-----------

take out parson too CCC has been prepared

1	— 21 North Park Street office building	
2	purchase	38,546,000
3	— School of Nursing	5,451,000
4	(Total project all funding sources \$47,346,000)	
5	— Utility improvements	8,352,200
6	(Total project all funding sources \$78,374,000)	
7	— West campus athletic facilities	3,973,500
8	(Total project all funding sources \$7,947,000)	
9	Milwaukee — Utility improvements	969,800
10	(Total project all funding sources \$6,419,000)	
11	Platteville — Residence hall upgrades	10,000,000
12	— Storage facility	284,000
13	(Total project all funding sources \$1,700,000)	
14	— Williams Field House addition	4,500,000
15	(Total project all funding sources \$11,700,000)	
16	River Falls — Ramer Field renovation	500,000
17	(Total project all funding sources \$3,987,000)	
18	— Hagestad Hall renovation	3,125,000
19	(Total project all funding sources \$4,000,000)	
20	Stevens Point — Utility improvements	6,725,000
21	(Total project all funding sources \$7,725,000)	
22	Stout — Memorial Student Center renovation	18,000,000

1	Madison — Agricultural research station renova-	
2	tions — Various locations Phase 1	5,800,000
3	— Gordon Commons relocation, park-	
4	ing, and offices — Phases 2 and 3	2,762,000
5	(Total project all funding sources \$41,305,000)	
6	— Kohl Center hockey facility addition	27,787,000
7	— School of Nursing	13,825,300
8	(Total project all funding sources \$47,346,000)	
9	— Science museum	5,092,000
10	— Tandem Press relocation	4,616,000
11	— West campus athletic facilities	3,973,500
12	(Total project all funding sources \$7,947,000)	
13	— Wisconsin Energy Institute	50,000,000
14	(Total project all funding sources	
15	\$100,000,000)	
16	— Wisconsin Institutes for Medical	
17	Research	67,400,000
18	(Total project all funding sources	
19	\$134,800,000)	
20	Platteville — Stadium locker room expansion	1,000,000
21	— Williams Field House addition	7,200,000
22	(Total project all funding sources \$11,700,000)	



1 River Falls — Ramer Field renovation 3,487,000
 2 (Total project all funding sources \$3,987,000)

3 7. Agency totals:

4 General fund supported borrowing

245,632,000 ✓
 273,701,700 ✓

5 Existing general fund revenue supported
 6 borrowing authority 1,789,000

7 Program revenue supported borrowing

494,014,100 ✓
 499,465,100 ✓

8 Existing program revenue supported borrowing
 9 authority 1,416,000

10 Program revenue 8,563,000

11 Building trust funds 500,000

12 Gifts, grants, and other receipts

179,117,500 ✓
 192,942,800 ✓

13 Total — All sources of funds

931,031,600 ✓
 \$ 978,377,600 ✓

14 (h) AIDS NETWORK

15 1. Projects financed by general fund supported
 16 borrowing:

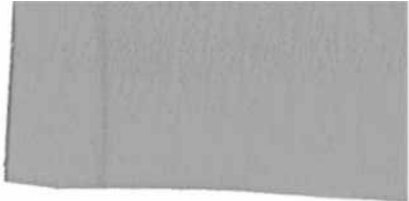
17 Facilities renovation — Madison \$ 300,000

18 2. Agency totals:

19 General fund supported borrowing 300,000

20 Total — All sources of funds \$ 300,000

21 (i) AIDS RESOURCE CENTER OF WISCONSIN



1	General fund supported borrowing	200,000,000
2	Existing general fund supported borrowing	
3	authority — Stewardship property development	
4	and local assistance funds	1,605,400
5	Program revenue supported borrowing	88,388,000
6	Segregated fund supported borrowing	2,330,700
7	Segregated fund supported revenue borrowing	3,021,200
8	Program revenue	12,090,500
9	Gifts, grants, and other receipts	250,000
10	Federal funds	320,300
11	Total — All sources of funds	308,006,100
12	(s) SUMMARY	
(13)	Total general fund supported borrowing	513,632,100 641,701,800
14	Total existing general fund supported borrowing	
15	authority	26,367,400
16	Total existing general fund supported borrowing	
17	authority — Stewardship property development	
18	and local assistance funds	12,056,300
(19)	Total program revenue supported borrowing	633,764,600 639,216,600
20	Total existing program revenue supported	
21	borrowing authority	3,416,000
22	Total segregated fund supported borrowing	7,978,300

1	Total segregated fund supported revenue	
2	borrowing	6,981,100
3	Total program revenue	20,653,500
4	Total building trust funds	600,000
5	Total gifts, grants, and other receipts	190,036,000 203,861,300 ✓
6	Total federal funds	89,448,400 ✓
7	Total — All sources of funds	\$ 1,504,933,700 1,552,279,700 ✓

8 (2) PROGRAMS PREVIOUSLY AUTHORIZED. In addition to the projects and financing
 9 authority enumerated in subsection (1), the building and financing authority
 10 enumerated in the previous state building program is continued in the 2009-11 fiscal
 11 biennium.

12 (3) LOANS. During the 2009-11 fiscal biennium, the building commission may
 13 make loans from general fund supported borrowing or the building trust fund to state
 14 agencies, as defined in section 20.001 (1) of the statutes, for projects that are to be
 15 utilized for programs not funded by general purpose revenue and that are authorized
 16 under subsection (1).

17 (4) ADJUSTMENT OF TOTALS.

18 (a) In the 2005-07 Authorized State Building Program, the appropriate totals
 19 are adjusted to reflect the changes made by SECTIONS 3406m, 3406n, and 3406p of
 20 this act.

21 (b) In the 2007-09 Authorized State Building Program, the appropriate totals
 22 are adjusted to reflect the changes made by and SECTIONS 3409n and 3409p of this
 23 act.

24 (5) 2003-05 AUTHORIZED STATE BUILDING PROGRAM DELETIONS.



done ✓
1
2
3
4
5

the effective date of this subsection and to asbestos claim actions pending against a successor corporation in which a trial has not commenced on the effective date of this subsection.

Tenant foreclosure actions
(4c) The treatment of sections 802.03 (9) and 846.35 (1) (c), (4), and (5) of the statutes, the renumbering of section 799.41 of the statutes, and the creation of section 799.41 (2) of the statutes, first apply to actions commenced on the effective date of this subsection.

OUT on 2/11/11

NO CCC's

DONE
under the change

SECTION 9310. Initial applicability; Commerce.

SECTION 9311. Initial applicability; Corrections.

(2) **RELEASE TO EXTENDED SUPERVISION FOR MEDICAL REASONS BY DEPARTMENT OF**

CORRECTIONS. The treatment of sections 301.03 (3) (as it relates to a petition filed under section 302.1135 of the statutes, as affected by this act), 302.113 (9g) (a) (intro.), 1., and 2., (b) (intro.), 1., 2., and 3., (c), (cm), (d), (e), (f) (intro.), 1., and 2., (g) 1., 2., and 3., (h), (i), and (j), 302.1135 (title), (1) (a), and (6) (a) (intro.) and (b), 801.50 (5), 911.01 (4) (c) (as it relates to a petition filed under section 302.1135 of the statutes, as affected by this act), 950.04 (1v) (g), (gm), and (nt), 973.01 (7) (as it relates to a petition filed under section 302.1135 of the statutes, as affected by this act), and 977.05 (4) (jm) of the statutes first applies to petitions submitted on the effective date of this subsection.

(4) **SENTENCING ADJUSTMENT.** The renumbering and amendment of section 302.113 (2) of the statutes, the amendment of sections 301.03 (3), 301.048 (2) (am) 3., 301.21 (1m) (c), 301.21 (2m) (c), 302.045 (3), 302.05 (3) (b), 302.11 (1g) (b) (intro.), 302.11 (1g) (b) 2., 302.11 (1g) (c), 302.11 (1g) (d), 302.11 (1m), 302.11 (7) (c), 302.113 (1), 302.113 (3) (d), 302.113 (7), 302.113 (9) (c), 302.114 (9) (c), 304.01 (title), 304.01 (1), 304.01 (2) (intro.), 304.01 (2) (b), 304.01 (2) (c), 304.01 (2) (d), 304.06 (title), 304.06