

Clearinghouse Rule 18-007
PUBLIC SERVICE COMMISSION OF WISCONSIN

In the Matter of the Proposed Revision of Wis. Admin. Code ch. PSC 114 as
Wisconsin State Electrical Code, Volume I

1-AC-250

NOTICE OF HEARING

Hearing Date	Wednesday, February 21, 2018 – 10:00 a.m.
Hearing Location:	Amnicon Falls Hearing Room – 1st Floor Public Service Commission 610 North Whitney Way Madison, Wisconsin

Comments Due: Wednesday, March 7, 2018 – Noon	Address Comments To: Sandra J. Paske, Secretary to the Commission Public Service Commission P.O. Box 7854 Madison, WI 53707-7854
--	---

The Public Service Commission of Wisconsin proposes an order to repeal PSC 114.215, 114.234 (7), 114.261, 114.320, and 114.323; amend 114.001 (3), 114.002 (2) (d), 114.006 (1) and (2), 114.007 (intro.) and Notes, 114.010, 114.02 (intro.), (1) and (2), 114.092 (title), (1) (intro.) and (2) (intro.), 114.094, 114.096 (intro.) and Exception 2, 114.097 (intro.), (1) (intro.) and (2) (intro.), 114.099 (intro.), (1) (intro.), (2) and (3) (intro.), 114.202, 114.210 (intro.), 114.219, 114.230 (title), (1) and (2) (intro.), 114.232 (1) (intro.), (1) (a) (intro.), (1) (b) (intro.) (1) (c), (1) (d), (1) (e) (intro.), (1) (f), (2) (intro.) and (3) (intro.), 114.234 (1) (intro.), (2) (intro.), (3) (intro.), (4) (intro.), (5) (intro.) and (6) (intro.), (8) (intro.), and (9) (intro.), 114.235 (intro.), 114.242 (intro.), 114.250 (1) and (2) (intro.), 114.253 (intro.), 114.302 (intro.), 114.310 (intro.), 114.317, 114.350 (intro.), 114.352 (intro.), 114.353 (intro.), 114.381 (intro.), 114.402 (intro.), and 114.410; repeal and recreate 114.215, 114.234 (10), and 114.354; and create 114.102, 114.103, 114.114, 114.231, and 114.234 (11), (12), and (13) regarding the adoption of the 2017 edition of the National Electrical Safety Code into Volume 1 of the State Electrical Code.

ANALYSIS PREPARED BY THE
PUBLIC SERVICE COMMISSION OF WISCONSIN

The analysis is set forth as Attachment A.

TEXT OF PROPOSED RULE

The text of the proposed rule is set forth as Attachment B.

INITIAL REGULATORY FLEXIBILITY ANALYSIS

This rule will not affect small businesses. The Wis. Stat. § 227.114(1) definition of “small business” states that to be considered a small business, the business must not be dominant in its field. Since electric utilities are monopolies in their service territories, they are dominant in their fields and are not small businesses.

FISCAL ESTIMATE AND ECONOMIC IMPACT ANALYSIS

The Fiscal Estimate and Economic Impact Analysis are included as Attachment C.

NOTICE OF HEARING

NOTICE IS GIVEN that pursuant to Wis. Stat. § 227.16(2)(b), Stats., the Commission will hold a public hearing on these proposed rule changes in the Amnicon Falls Hearing Room at the Public Service Commission Building, 610 North Whitney Way, Madison, Wisconsin, on **Wednesday, February 21, 2018, at 10:00 a.m.** This building is accessible to people in wheelchairs through the Whitney Way (lobby) entrance. Handicapped parking is available on the south side of the building.

The Commission intends to webcast any hearing sessions held in the Amnicon Falls Hearing Room live on the Commission’s web site at <http://psc.wi.gov> under the “Live Broadcast” button.

DOCUMENTS. All documents in this docket are filed on the Commission’s Electronic Records Filing (ERF) system. To view these documents: (1) go to the Commission’s E-Services Portal at <http://apps.psc.wi.gov>, (2) enter “1-AC-250” in the box labeled “Quick Single Docket Search,” and (3) select “Documents.”

WRITTEN COMMENTS

Any person may submit written comments on these proposed rules. The hearing record will be open for written comments from the public, effective immediately, and until **Wednesday**,

Docket 1-AC-250

March 7, 2018, at noon. All written comments must include a reference on the filing to docket 1-AC-250. File by one mode only.¹

A person may provide comments in this proceeding without becoming a party and without attorney representation. A person may submit comments in only one of the following ways:

- **Web Comment.** Go to the Commission's web site at <http://psc.wi.gov>, click on the "File a Comment" button. On the next page select the "File a comment" link that appears for docket number 1-AC-250. Web comments shall be received no later than Wednesday, March 7, 2018.
- **Oral Comment.** Spoken testimony at the public session.
- **Written Comment.** Instead of speaking at the hearing, write out a comment and submit it at the public session.
- **Mail Comment.** All comments submitted by U.S. mail shall be received no later than Wednesday, March 7, 2018. A mail comment shall include the phrase "Docket 1-AC-250 Comments" in the heading, and shall be addressed to:

Docket 1-AC-250 Comments
Public Service Commission
P.O. Box 7854
Madison WI 53707-7854

The Commission will not accept comments submitted via e-mail or facsimile (fax). Any material submitted to the Commission is a public record and may appear on the Commission web site. Only one comment may be submitted per person during a comment period. The Commission may reject a comment that does not comply with the requirements described in this notice.

WISCONSIN ENVIRONMENTAL POLICY ACT

This is a Type III action under Wis. Admin. Code § PSC 4.10(3). The Commission will review the potential environmental effects of the project. Type III actions normally do not require the preparation of an environmental impact statement under Wis. Stat. § 1.11 or an environmental assessment.

CONTACT PEOPLE

¹ As an alternative to submitting your comment directly to the Commission, state law allows anyone to file a web comment on the Legislative Rules Clearinghouse website, <https://docs.legis.wisconsin.gov/code/comment>. This site forwards the comment to the Commission.

Docket 1-AC-250

Questions regarding this matter should be directed to the docket coordinator, Mohammed Monawer, at (608) 266-3900, or Mohammed.Monawer@wisconsin.gov. Small business questions should be directed to Kristy Nieto at (608) 261-9419. Media questions should be directed to the Communications Director, Matthew Spencer at (608) 267-3589.

The commission does not discriminate on the basis of disability in the provision of programs, services, or employment. Any person with a disability who needs accommodations to participate in this proceeding or who needs to get this document in a different format should contact the docket coordinator, as indicated in the previous paragraph, as soon as possible.

Dated at Madison, Wisconsin, this 22nd day of January, 2018.

By the Commission:

A handwritten signature in black ink, appearing to read "Sandra J. Paske". The signature is fluid and cursive, with a large initial "S" and a stylized "P".

Sandra J. Paske
Secretary to the Commission

SJP:RPM:mc:DL:01599625

**ANALYSIS PREPARED BY THE
PUBLIC SERVICE COMMISSION OF WISCONSIN**

A. Statutory Authority and Explanation of Authority

This rulemaking is authorized under Wis. Stat. §§ 196.02 (1) and (3), 196.74, and 227.11(2).

Wisconsin Stat. § 227.11(2) authorizes agencies to promulgate administrative rules. Wisconsin Stat. § 196.02(1) authorizes the Commission to do all things necessary and convenient to its jurisdiction. Wisconsin Stat. § 196.02(3) grants the Commission specific authority to promulgate rules. Wisconsin Stat. § 196.74 authorizes the Commission to promulgate rules that promote public safety by requiring the construction and operation of electric wires and equipment to be safe.

In relevant part, Wis. Stat. § 196.74 states that “[e]ach public utility and railroad which owns, operates, manages or controls along or across any public or private way any wires over which electricity or messages are transmitted shall construct, operate and maintain the wires and any related equipment in a manner which is reasonably adequate and safe and which does not unreasonably interfere with the service furnished by any other public utility or railroad. The commission may issue orders or rules, after hearing, requiring electric construction and operating of such wires and equipment to be safe. The commission may revise the orders or rules as may be required to promote public safety”

B. Statute Interpreted

This rulemaking interprets Wis. Stat. §§ 196.02 (1) and (3), 196.74, and 227.11(2).

C. Related Statutes or Rules

Wisconsin Admin. Code ch. SPS 316, which is Volume 2 of the Wisconsin State Electrical Code (WSEC).

D. Brief Summary of Rule

Volume 1 of the WSEC, codified in Wis. Admin. Code ch. PSC 114, is administered by the Commission. It deals with safety requirements for the installation, operation, and maintenance of primarily outdoor electric supply and communications lines and facilities used by utilities, including electric and telecommunications suppliers, railroads, and cable television providers.

Wisconsin Admin. Code ch. PSC 114 has been, and is, based on the National Electrical Safety Code (NESC). The NESC is revised and updated every five years requiring subsequent periodic revision of WSEC, Volume 1, to adopt the latest national standard. In 1979, 1982, 1985, 1988, 1991, 1994, 1997, 2003, 2008, and 2014, the Commission adopted the 1977, 1981, 1984, 1987, 1990, 1993, 1997, 2002, 2007, and 2012 editions of the NESC, respectively, with certain changes, deletions, and additions which apply in Wisconsin only and are contained in Wis. Admin. Code ch. PSC 114.

The 2017 edition of the NESC was issued in August 2016. A corresponding revision of Wis. Admin. Code ch. PSC 114 is necessary to implement the latest edition of the national code and make any other necessary changes to update and improve the code. A technical advisory committee was appointed and met to recommend and discuss the rule changes. Commission staff and members of the technical advisory recommended changes to Wis. Admin. Code ch. PSC 114.

The majority of the recommended changes to Wis. Admin. Code ch. PSC 114 either update the NESC reference titles and page numbers or provide minor clarifications to the existing rules based on the NESC-2017 edition. In addition, the NESC incorporated several revisions from the current Wis. Admin. Code ch. PSC 114 into the NESC-2017 edition; therefore, several revisions were no longer necessary and were repealed from Wis. Admin. Code ch. PSC 114.

The substantive changes to Wis. Admin. Code ch. PSC 114 are summarized as follows:

The creation of Wis. Admin. Code § PSC 114.114, relating to fire-extinguishing equipment, maintains a rule that was omitted in the NESC-2017 edition. This rule will eliminate confusion about whether fire-extinguishing equipment is required in unmanned stations.

The creation of Wis. Admin. Code § PSC 114.231 adds clarity to NESC Rule 231B1, relating to the “sufficient distance” of poles from curbs. Since 1977, the NESC has required that poles be at least six inches behind the face of the curb. This requirement was omitted in the NESC-2017 edition. This rule maintains this requirement.

The creation of Wis. Admin. Code §§ PSC 114.234 (12) and (13) adds the newly created NESC-2017 Table 234-6 and associated Footnote 3.

E. Comparison with Existing or Proposed Federal Legislation

The NESC, which is incorporated by reference in Wis. Admin. Code ch. PSC 114, covers provisions for safeguarding of persons from hazards arising from installation, operation, or maintenance of conductors and equipment in electric supply stations, and overhead and underground electric supply and communication lines. The national standard is applicable to systems and equipment owned by utilities.

F. Comparison with Similar Rules in Surrounding States

This rulemaking adopts certain portions of the latest edition of the NESC. Minnesota automatically adopts each new NESC edition by reference. Michigan does not specifically adopt the NESC, but effectively does so by referencing it as “standards of good practice.” Iowa adopts all but Part 4, and Illinois adopts sections of Part 1 and Parts 2 and 3.

G. Effect on Small Business

This rule will not affect small businesses. The Wis. Stat. § 227.114(1) definition of “small business” states that to be considered a small business, the business must not be dominant in its field. Since electric utilities are monopolies in their service territories, they are dominant in their fields and are not small businesses.

FISCAL ESTIMATE AND ECONOMIC IMPACT ANALYSIS

A completed Fiscal Estimate and Economic Impact Analysis are included as Attachment C.

H. Comments

Comments on this rule may be submitted as outlined in the Notice of Hearing.

I. Accommodation

The commission does not discriminate on the basis of disability in the provision of programs, services, or employment. Any person with a disability who needs accommodations to participate in this proceeding or who needs to obtain this document in a different format should contact the docket coordinator listed below.

J. Agency Contact People

Questions regarding this matter should be directed to the docket coordinator, Mohammed Monawer, at (608) 266-3900, or Mohammed.Monawer@wisconsin.gov. Small business questions should be directed to Kristy Nieto at (608) 261-9419. Media questions should be directed to the Communications Director, Matthew Spencer at (608) 267-3589.

TEXT OF PROPOSED RULE

SECTION 1. PSC 114.001 (3) is amended to read:

(3) AVAILABILITY OF STATE ELECTRICAL CODE. The commission has adopted the ~~2012-~~ 2017 edition of the National Electrical Safety Code (~~NESC-2012~~ NESC-2017) with certain deletions, changes and additions which are found in Volume 1, Wisconsin State Electrical Code. Copies of the NESC may be purchased from the Institute of Electrical and Electronics Engineers, Inc., IEEE Service Center, 445 Hoes Lane, P.O. Box 1331, Piscataway, NJ 08855-1331 (telephone 1-800-678-IEEE) or the American National Standards Institute, 1430 Broadway, New York, NY 10018 (telephone 212/642-4900). Copies of the NESC may be ordered online at <http://standards.ieee.org/nesc>. Copies of Volume 1, Wisconsin State Electrical Code, may be ordered from the Wisconsin Department of Administration, Document Sales, 202 South Thornton Avenue, Madison, WI 53702 (telephone 608/266-3358). Unofficial copies of the rules can be obtained online at http://docs.legis.wi.gov/code/admin_code/psc/114/.

SECTION 2. PSC 114.002 (2) (d) is amended to read:

(d) This chapter does not apply to installations in mines, ships, railway rolling equipment, aircraft or automotive equipment, or utilization wiring except as covered in Parts 1 and 3, ~~NESC-2012~~ NESC-2017.

SECTION 3. PSC 114.006 (1) and (2) are amended to read:

(1) ADOPTION OF STANDARD. The National Electrical Safety ~~Code-2012-~~ Code-2017 edition (also American National Standards Institute ~~C2-2012-~~ C2-2017 edition) subject to omissions, changes and additions as otherwise shown in this chapter, is hereby incorporated by reference into the Wisconsin State Electrical Code, Volume 1. Interim amendments to the ~~NESC-2012~~ NESC-2017 will not be effective in this state until such time as this chapter is revised to reflect such changes.

(2) CONSENT TO INCORPORATE ~~NESC-2012~~ NESC-2017 BY REFERENCE. Pursuant to s. 227.21, Stats., the attorney general has consented to the incorporation by reference of these standards contained in the ~~NESC-2012~~ NESC-2017, except for the omissions, changes and additions as shown later in this chapter. Copies of the ~~NESC-2012~~ NESC-2017 are on file in the offices of the commission and the legislative reference bureau.

SECTION 4. Chapter PSC 114 Subchapter III is amended to read:

Subchapter III – Omissions, Changes or Additions to ~~NESC-2012~~ NESC-2017

SECTION 5. PSC 114.007 (intro.) and PSC 114.007 Notes are amended to read:

PSC 114.007 Omissions, changes, additions to ~~NESC-2012~~ NESC-2017. Omissions, changes or additions to the ~~NESC-2012~~ NESC-2017 are specified in this subchapter and are rules of the commission and not requirements of the ~~NESC-2012~~ NESC-2017.

Note 1: Each omission, change or addition is found in the same location in this subchapter as the appropriate NESC part, section or subsection where the affected rule is found. Each change or addition has been prefixed by ch. PSC 114. Following the PSC designation is the referenced NESC section or subsection and the page on which it is found in the NESC. Example: PSC 114.096C [NESC 096C, p. ~~32~~ 34]. The word "Change" following the section number and heading means that the corresponding wording of the ~~NESC-2012~~ NESC-2017 has been changed and that the new wording is substituted at the appropriate location. The word "Addition" following the section number and heading means that a new requirement is incorporated in the ~~NESC-2012~~ NESC-2017 and that the new requirement is inserted at the appropriate location.

Note 2: To observe federal directives and recommendations that national standards adopt the metric system for units of measure, the numerical values of the ~~NESC-2012~~ NESC-2017 are stated in the metric system and in the customary inch-foot-pound system. To conform to this more international convention, this revision of the Wisconsin State Electrical Code, Volume 1 also adopts the same measurement convention. In the text, the metric value is now shown first with the customary inch-foot-pound value (in parentheses) following. In tables, the metric values are also given first and where the entire tables are duplicated, the table of metric values appears first with the table of inch-foot-pound values following.

SECTION 6. PSC 114.010 is amended to read:

PSC 114.010 Omissions. [NESC 010 through 016, pp. 1-6] Introduction to the National Electrical Safety Code (Section 1) (Omission) Rules 010 through 016 of the ~~NESC-2012~~ NESC-2017 are omitted and not incorporated as part of the Wisconsin State Electrical Code, Volume 1.

SECTION 7. PSC 114.02 (intro.), (1) and (2) are amended to read:

PSC 114.02 Definitions of special terms. [~~NESC Section 2, p. 7~~] (~~Change and Addition~~).

(1) ADMINISTRATIVE AUTHORITY. [~~NESC Section 2., p. 7~~] (~~Change~~) Change the definition of "Administrative Authority" to read:

~~(a)~~ *Administrative authority.* The authority for the enforcement of this code is vested in the commission with respect to the installation and operation of circuits or equipment by public utilities and railroads in the exercise of their functions as utilities and railroads.

(2) COMMISSION. [~~NESC Section 2, p. 8~~] (~~Addition~~) Add the following definition:

~~(a)~~ *Commission*. Public service commission of Wisconsin.

SECTION 8. PSC 114.092 (title), (1) (intro.) and (2) (intro.) are amended to read:

PSC 114.092 Point of connection of grounding ~~connector~~ conductor.

(1) CABLE WITH INSULATING JACKET. [NESC 092B2b(3), p. ~~23~~ 25] (Change) Change paragraph (3) to read:

(2) CURRENT IN GROUNDING CONDUCTOR. [NESC 092D, p. ~~24~~ 26] (Change) Change paragraph D to read:

SECTION 9. PSC 114.094 is amended to read:

PSC 114.094 Grounding electrodes. [~~NESC 094B4 p. 29~~ NESC 094B3 p. 32] (Omission) ~~(1)~~ Rule ~~094B4~~ 094B3 of the ~~NESC-2012~~ NESC-2017 is omitted and not incorporated as part of the Wisconsin State Electrical Code, Volume 1.

SECTION 10. PSC 114.096 (intro.) and PSC 114.096 Exception 2 are amended to read:

PSC 114.096 ~~Multi-grounded systems~~ Ground resistance requirements. [NESC 096C, p. 32 34] (Change) Change paragraph C to read:

Exception 2: Where underwater crossings are encountered, the requirements of made electrodes do not apply for the underwater portion if the neutral is of sufficient size and capacity for the duty involved and the requirements of Rule ~~92B2~~ 092B2 are met.

SECTION 11. PSC 114.097 (intro.), (1) (intro.) and (2) (intro.) are amended to read:

PSC 114.097 Separation of grounding conductors. [~~NESC 097C, p. 32~~] (Changes)

(1) ~~Change paragraph~~ PARAGRAPH C. [NESC 097C, p. 35] (Changes) Change paragraph C to read:

(2) UNDERGROUND OR SINGLE-GROUNDED SYSTEMS AND MULTI-GROUNDED SYSTEMS. [NESC 097D, p. 35] (Change) Change paragraph D to read:

SECTION 12. PSC 114.099 (intro.), (1) (intro.), (2) and (3) (intro.) are amended to read:

PSC 114.099 Additional requirements for grounding and bonding of communication apparatus. ~~[NESC 099, p. 33] (Change and Addition)~~

(1) ADDITIONAL REQUIREMENTS FOR GROUNDING AND BONDING OF COMMUNICATION APPARATUS. [NESC 099, p. 36] (Change) Change title ~~099~~ to read:

(2) BONDING OF ELECTRODES. [NESC 099C, p.37] (Change) Change paragraph C to read:

C. Bonding of electrodes

A bond not smaller than AWG No. 6 copper or equivalent shall be placed between the communication grounding electrode and the supply system neutral grounding electrode where separate electrodes are used at the structure or building being served. All separate electrodes shall be bonded together except where separation is required per Rule ~~97~~ 097. Bonding to other systems shall not be done on or within a metering enclosure unless a means of bonding, intended for inter-system bonding, is furnished as part of the metering enclosure.

Recommendation: If water piping is used as a bonding means, care must be taken to assure that the metallic path is continuous between electrodes.

(3) TRANSMISSION SHIELD WIRE SYSTEMS AND TRANSMISSION SYSTEMS WITH UNDER-BUILT MULTI-GROUNDED DISTRIBUTION SYSTEMS. ~~(Addition)~~ [Follows NESC 099C, p. 34 37] (Addition)
Following NESC 099C, Add add paragraph D to read:

SECTION 13. Part 1 (follows PSC 114.099) is created to read:

Part 1. Safety Rules for the Installation and Maintenance of Electric Supply Stations and Equipment

Section 10. Purpose and Scope of Rules

SECTION 14. PSC 114.102 is created to read:

PSC 114.102 Application of rules. [NESC 102, p. 39] (Change) Change paragraph 102 to read:

102. Application of rules

The general requirements for application of these rules are contained in s. PSC 114.005.

SECTION 15. PSC 114.103 is created to read:

PSC 114.103 Referenced sections. [NESC 103, p. 39] (Change) Change paragraph 103 to read:

103. Referenced sections

The Introduction (Section 1) as amended by s. PSC 114.010, Definitions (Section 2) as amended by Section 2 of Chapter PSC 114, List of Referenced Documents (Section 3) and Grounding Methods (Section 9) as amended by Section 9 of Chapter PSC 114 shall apply to the requirements of Part 1.

SECTION 16. PSC 114.114 is created to read:

PSC 114.114 Fire-extinguishing equipment. [Follows NESC 113, p. 46] (Addition) Following NESC 113 add paragraph 114 to read:

114. Fire-extinguishing equipment

Portable or permanent fire-extinguishing equipment approved for the intended use shall be conveniently located inside control buildings or similar buildings and conspicuously marked.

Exception: This rule does not apply to unmanned, outdoor substations that do not contain a control building or similar building. This rule is not intended to require permanently installed fire extinguishers or fire extinguishment system in all electric supply stations or in all areas of large, complex stations.

SECTION 17. PSC 114.202 is amended to read:

PSC 114.202 Application of rules. [NESC 202, p. ~~73~~ 77] (Change) Change the paragraph 202 to read:

202. Application of rules

The general requirements for application of these rules are contained in s. PSC 114.005. However, when a structure is replaced, arrangement of equipment shall conform to the ~~2012~~ 2017 Edition of Rule 238C.

SECTION 18. PSC 114.210 (intro.) is amended to read:

PSC 114.210 Referenced sections. [NESC 210, p. ~~74~~ 78] (Change) Change paragraph 210 to read:

SECTION 19. PSC 114.215 is repealed and recreated to read:

PSC 114.215 Grounding of circuits, supporting structures, and equipment. [NESC 215C1, p. 80] (Addition) Following NESC 215C1 Exception 3, add Exception 4 to read:

Exception 4: This requirement does not apply to supply cables meeting Rule 230C3 or communication cables.

SECTION 20. PSC 114.219 is amended to read:

PSC 114.219 Marking of poles and structures carrying high voltage supply lines. [Follows NESC 218, p. 79 ~~84~~] (Addition) ~~Add the following~~ Following NESC 218, add section 219 to read:

219. Marking of poles and structures carrying high voltage supply lines

~~(4)~~ A. Every corporation, company or person constructing, operating or maintaining an electric transmission line with a voltage of 2,000 or more between conductors and the ground shall place warning signs from 1.2 to 2.45 m (4 to 8 ft) above the ground upon all poles or other structures supporting the line.

Exception: Existing poles and structures which were required to be signed by s. 196.67, stats. and were installed prior to January 1, 1995, are permitted to comply with the warning sign requirements which existed on December 31, 1994.

~~(2)~~ B. Warning signs installed as replacements or new facilities on overhead electrical supply line poles and structures shall comply with the following standards:

~~(a)~~ 1. Warning signs which meet the requirements as to format and color of American National Standards Institute standard ANSI Z535.2-2011 for safety signs.

~~(b)~~ 2. The overall dimensions of these signs shall not be less than 25.4 cm by 17.78 cm (10 in by 7 in) except that in those situations where use of a sign this size is not practical, two or more signs not smaller than 17.78 cm by 12.7 cm (7 in by 5 in) may be substituted.

Exception: Existing poles and structures installed prior to July 1, 2003, are permitted to continue to use the "Danger - High Voltage" sign format meeting the requirements of the prior rule until such signs are replaced.

SECTION 21. Chapter PSC 114 Section 23 note is amended to read:

Note: The specification of clearances in Rules 232, 233, and 234, first adopted in the NESC-1990, and continued in the 1997 edition of the NESC adopted herein, have been revised in both concept and content to reflect the new Uniform System of Clearances approach which is described in Appendix A of NESC-1990, NESC-1993, NESC-1997, NESC-2002, NESC-2007, ~~and~~ NESC-2012 and NESC-2017. Because the approach and the application of the rules have been revised, it must be understood that clearance values of editions of the national and state codes prior to 1990 cannot be directly compared to those of editions of the codes after 1990. See Appendix A of NESC-1990, NESC-1993, NESC-1997, NESC-2002, ~~and~~ NESC-2007, ~~or~~ NESC-2012, or NESC-2017.

SECTION 22. PSC 114.230 (title), (1) and (2) (intro.) are amended to read:

PSC 114.230 Clearances General.

(1) CLEARANCES APPLICATION. [NESC ~~230A(1) 230A1~~ and ~~230A(2) 230A2~~, p. ~~85 90~~]
(Omission) Rules ~~230A(1) 230A1~~ and ~~230A(2) 230A2~~ of the NESC-2012 NESC-2017 are omitted and not incorporated as part of the Wisconsin State Electrical Code, Volume 1.

(2) MAINTENANCE OF CLEARANCES AND SPACINGS. [NESC 230I, p. ~~89 94~~] (Change) Change the Note in paragraph I to read:

SECTION 23. PSC 114.231 is created to read:

PSC 114.231 Clearance of supporting structures from other objects. [NESC 231B1, p. 96]
(Change) Change paragraph 1 to read:

1. Where there are curbs: supporting structures, support arms, anchor guys, or equipment attached thereto, up to 4.6 m (15 ft) above the road surface shall be located a sufficient distance behind the curb to avoid contact by ordinary vehicles using and located on the traveled way. For a redirection curb, such distance shall be not less than 150 mm (6 in) from the street side of the curb.

SECTION 24. PSC 114.232 (1) (intro.), (1) (a) (intro.), (1) (b) (intro.) (1) (c), (1) (d), (1) (e) (intro.), (1) (f), (2) (intro.) and (3) (intro.) are amended to read:

(1) TABLE PSC 114.232-1. [NESC Table 232-1, pp. ~~94-97 99- 102~~: metric; pp. ~~97-100 103- 106~~: feet] ~~Vertical Clearance of Wires, Conductors and Cables above Ground, Rails, or Water Surfaces (Changes and Additions) The Footnotes for NESC Table 232-1 on page 96-97 (Metric) and page 99-100 (Feet) contain the following changes and additions:~~

(a) Footnote 18 [NESC, Table 232-1, p. 101: metric; p. 105 feet] Change Footnote 18 to read as follows:

(b) Footnote 21 [NESC, Table 232-1, p. 102 metric; p. 106: feet] Change Footnote 21 to read as follows:

(c) ~~Add Footnote 26 to read as follows:~~ Footnote 25 [NESC, Table 232-1, p. 102: metric; p. 106: feet] (Change) Change Footnote 25 to read as follow:

²⁶~~25~~ Water areas not suitable for sailboating include portions of meandering rivers, streams and canals where the widest width does not exceed 50 m (165 feet) within any unobstructed, 1.6-km (1-mile) long segment that includes the crossing or where the width does not exceed 50 m (165 feet) within the surface area of any segment less than 1.6-km (1-mile) long on the line-crossing side of an overwater obstruction. All rivers, streams, canals and creeks as defined by the Wisconsin department of natural resources (DNR) which meet this definition are considered not suitable for sailing.

(d) Footnote 25 [NESC, Table 232-1, p. 102: metric; p. 106: feet] (Addition) Add the reference to Footnote ~~26~~ 25 in the ~~in NESC-2012~~ NESC-2017 Table 232-1 (both the metric and feet sections) on ~~pp. 94-97 (Metric) and pp. 97-100 (Feet)~~ to the sailboating category titles of rows 6 and 7. It applies to all clearances in those rows.

(e) Footnote 27 [Follows NESC, Table 232-1 Footnote 26, p. 102: metric; p. 106: feet] (Addition) Following Footnote 26 for Table 232-1 (for both the metric and feet sections), Add add Footnote 27 which reads as follows:

(f) Footnote 27 [Follows NESC, Table 232-1 Footnote 26, p. 102: metric; p. 106: feet] (Addition) Add the reference to Footnote 27 in the Table 232-1 (both the metric and feet sections) ~~in NESC-2012 Table 232-1 on pp. 94-97 (Metric) and pp. 97-100 (Feet)~~ to the conductor category titles of columns 3, 4 and 5. It applies to all clearances in those columns.

(2) TABLE PSC 114.232-2. [NESC, Table 232-2, ~~pp. 101-102~~ p. 108 (metric) and ~~pp. 102-103~~ p. 111 (feet)] ~~Vertical Clearance of Equipment Cases, Support Arms, Platforms, Braces and Unguarded Rigid Live Parts Above Ground, Roadway, or Water Surfaces~~ (Change) Change Footnote 8 to read as follows:

(3) TABLE PSC 114.232-3. [NESC, Table 232-3, ~~p. 104~~ 113] ~~Reference Heights~~ (Change) Change Footnote 3 to read:

SECTION 25. PSC 114.234 (1) (intro.), (2) (intro.), (3) (intro.), (4) (intro.), (5) (intro.) and (6) (intro.) are amended to read:

(1) ~~VERTICAL AND HORIZONTAL CLEARANCES.~~ [NESC 234C1a, p. ~~118~~ 128] (Change) Change paragraph (1) (a) to read:

(2) TRANSMISSION LINES OVER DWELLING UNITS. [Follows NESC 234C1b, p. ~~449~~ 128]
 (Addition) Following 234C1b, Add add the following paragraph c:

(3) ~~SUPPLY CONDUCTORS ATTACHED TO BUILDINGS OR OTHER INSTALLATIONS.~~ SERVICE-DROP CONDUCTORS, INCLUDING DRIP LOOPS SHALL HAVE CLEARANCE OF NOT LESS THAN THE FOLLOWING: [NESC 234C3d, p. ~~449~~ 129] (Change) Change Exception 2(a) to read:

(4) CLEARANCE OF LINES NEAR STORED MATERIALS. [Follows NESC 234C5, p. ~~420~~ 129]
 (Addition) Following 234C5, Add add the following paragraph 6 and note:

(5) CLEARANCE OF SUPPLY LINES NEAR FUEL STORAGE TANKS [Follows NESC 234C5, p. ~~420~~ 129]
 (Addition) Following NESC 234C5 and the PSC 114 addition of paragraph 6, Add add the following paragraph 7 and exceptions 1 and 2 to read:

(6) ~~CLEARANCE OF LINES NEAR WELLS~~ CLEARANCE OF OPEN SUPPLY LINES NEAR WELLS. [Follows NESC 234C5, p. ~~420~~ 129] (Addition) Following NESC 234C5 and PSC 114 additions of paragraph 6 and 7, Add add the following paragraph 8 and exception:

SECTION 26. PSC 114.234 (7) is repealed.

SECTION 27. PSC 114.234 (8) (intro.) and (9) (intro.) are amended to read:

(8) SWIMMING POOLS. [NESC 234E1, p. ~~424~~ 130] (Addition) Add the following sentence to the beginning of paragraph E1:

(9) GRAIN BINS LOADED BY PERMANENTLY INSTALLED AUGERS, CONVEYERS, OR ELEVATOR SYSTEMS. [Follows NESC 234F1, p. ~~422~~ 131] (Addition) Following 234F1, Add Exception and Note add exception and note to read:

SECTION 28. PSC 114.234 (10) is repealed and recreated to read:

(10) TABLE PSC 114.234-1. [NESC Table 234-1, pp. 141-145: metric]

(a) Table PSC 114.234-1 [NESC Table 234-1, p. 141: metric] (Change) Change the following values in the NESC Table 234-1 (metric):

1. The value in Item (Row) 1.b.(1), Column 2 is revised from "0.90" to "2.45"
2. The value in Item (Row) 1.b.(1), Column 3 is revised from "1.07" to "2.45"

(b) Footnote 19 [Follows NESC Table 234-1 Footnote 18, p. 144: metric] (Addition) Following Footnote 18 for Table 234-1 (metric), add Footnote 19 to read:

¹⁹This clearance may be reduced to 0.90 m for supply conductors limited to 300 V to ground and communications conductors and cables if the roof has a slope of not less than 1 (vertical) to 3 (horizontal).

(c) Footnote 19 [NESC Table 234-1, p. 141: metric] (Addition) Add the reference for Footnote 19 to the values in Item (Row) 1.b.(1), Columns 2 and 3.

SECTION 29. PSC 114.234 (11), (12), and (13) are created to read:

(11) TABLE PSC 114.234-1. [NESC Table 234-1, pp. 145-148: feet]

(a) Table PSC 114.234-1 [NESC Table 234-1, p. 145: feet] (Change) Change the following values in the NESC Table 234-1 (feet):

1. The value in Item (Row) 1.b.(1), Column 2 is revised from "3.0" to "8.0."
2. The value in Item (Row) 1.b.(1), Column 3 is revised from "3.5" to "8.0."

(b) Footnote 19 [Follows NESC Table 234-1 Footnote 18, p. 148: feet] (Addition) Following Footnote 18 for Table 234-1 (feet), add Footnote 19 to read:

¹⁹This clearance may be reduced to 3 ft for supply conductors limited to 300 V to ground and communications conductors and cables if the roof has a slope of not less than 1 (vertical) to 3 (horizontal).

(c) Footnote 19 [NESC Table 234-1, p. 145: feet] (Addition) Add the reference for Footnote 19 to the values in Item (Row) 1.b.(1), Columns 2 and 3.

(12) TABLE PSC 114.234-6. [NESC Table 234-6, p. 156: metric]

(a) Table PSC 114.234-6 [NESC Table 234-6, p. 156: metric] (Change) Change the following values from the NESC Table 234-6 (metric):

The value in the Items Row 4 (230C3, 230C2), Columns 6 and 7; Row 5 (230C1), Columns 6, 7 and 8; Row 6 (230D), Column 6; Row 7 (230C3, 230C2), Columns 3, 4, 6 and 7; Row 8

(230C1), Columns 3, 4, 5, 6, 7 and 8; Row 9 (230D), Columns 3 and 6 is revised from "0.90" to "2.45".

(b) Footnote 3 [Follows NESC Table 234-6 Footnote 2, p. 156: metric] (Addition) Following Footnote 2, add Footnote 3, which reads as follows:

³This clearance may be reduced to 0.90 m for supply conductors limited to 300 V to ground and communications conductors and cables if the roof has a slope of not less than 1 (vertical) to 3 (horizontal).

(c) Footnote 3 [NESC Table 234-6, p. 156: metric] (Addition) The reference to Footnote 3 is added to the values in Items Row 4 (230C3, 230C2), Columns 6 and 7; Row 5 (230C1), Columns 6 and 7; Row 6 (230D), Column 6; Row 7 (230C3, 230C2), Columns 3, 4, 6 and 7; Row 8 (230C1), Columns 3, 4, 6 and 7; Row 9 (230D), Columns 3 and 6.

(13) TABLE PSC 114.234-6. [NESC Table 234-6, p. 157: feet]

(a) Table PSC 114.234-6 [NESC Table 234-6, p. 157: feet] (Change) Change the following values from the NESC Table 234-6 (feet):

The value in the Items Row 4 (230C3, 230C2), Columns 6 and 7; Row 5 (230C1), Columns 6, 7 and 8; Row 6 (230D), Column 6; Row 7 (230C3, 230C2), Columns 3, 4, 6 and 7; Row 8 (230C1), Columns 3, 4, 5, 6, 7 and 8; Row 9 (230D), Columns 3 and 6 is revised from "3.0" to "8.0."

(b) Footnote 3 [Follows NESC Table 234-6 Footnote 2, p. 157: feet] (Addition) Following Footnote 2, add footnote 3, which reads as follows:

³This clearance may be reduced to 3 ft for supply conductors limited to 300 V to ground and communications conductors and cables if the roof has a slope of not less than 1 (vertical) to 3 (horizontal).

(c) Footnote 3 [NESC Table 234-6, p. 157: feet] (Addition) The reference to Footnote 3 is added to the value in Items Row 4 (230C3, 230C2), Columns 6 and 7; Row 5 (230C1), Columns 6 and 7; Row 6 (230D), Column 6; Row 7 (230C3, 230C2), Columns 3, 4, 6 and 7; Row 8 (230C1), Columns 3, 4, 6 and 7; Row 9 (230D), Columns 3 and 6.

SECTION 30. PSC 114.235 (intro.) is amended to read:

PSC 114.235 ~~Sag-related clearances~~ Clearance for wires, conductors, or cables carried on the same supporting structure. [~~Follows NESC 235C2b(1)(a)~~ NESC 235C2b(1)(b) Exception 2, p. 150 ~~162~~] (Change) Change Exception 2 to read:

SECTION 31. PSC 114.242 (intro.) is amended to read:

PSC 114.242 Grades of construction for conductors. [Follows NESC 242F, p. 487 199]
(Addition) Following NESC 242F, Add add the following paragraph G to read:

SECTION 32. PSC 114.250 (1) and (2) (intro.) are amended to read:

(1) EXTREME WIND LOADING. [Alternative to NESC 250C, p. 494 203] As an alternate to NESC Tables 250-2 and Table 250-3, the following Table PSC 114.250-2 and the related definitions and formulas for k_Z and G_{RF} may be used. (NESC Figure 250-2(b) “Basic Wind Speeds” is a part of this rule by reference.)

C. Extreme wind loading

If no portion of a structure or its supported facilities exceeds 18 m (60 ft) above ground or water level, the provision of the rule are not required, except as specified in ~~Rule 261A.1.2.f.~~ Rule 261A1c, 261A2e, or 261A3d. Where a structure or its supported facilities exceeds 18 m (60 ft) above ground or water level, the structure and its supported facilities shall be designed to withstand the extreme wind load associated with the Base Wind Speed as specified by NESC Figure 250-2(b). The wind pressures calculated shall be applied to the entire structure and supported facilities without ice.

The following formula shall be used to calculate wind load.

$$\text{Load in Newton} = 0.613 \cdot (V_{m/s})^2 \cdot k_Z \cdot G_{RF} \cdot I \cdot C_d \cdot A(m^2)$$

$$\text{Load in pounds} = 0.00256 \cdot (V_{mi/h})^2 \cdot k_Z \cdot G_{RF} \cdot I \cdot C_d \cdot A(ft^2)$$

Where:

0.613	Ambient Air Density Value, reflects the mass density of air for the standard atmosphere, i.e., temperature of 15°C (59°F) and average sea level pressure of 760 mm (29.92 in) of mercury. (No adjustment in the velocity to pressure coefficient has been made relative to changes in air density with altitude.) The dimensions associated with this coefficient are, for metric, 0.613 Ns ² /m ⁴ ; and, for English, 0.00256 lbhr ² /mi ² ft ² .
0.00256	
k_Z	Velocity-Pressure Exposure Coefficient, as defined in Table PSC 114-250-2;
V	Basic wind speed, from NESC 250C, Figure 250-2 given in m/s at 10 m (mi/h at 33 ft) above ground;
G_{RF}	Gust Response Factor, as defined in Table PSC 114-250-2;

- I Importance factor equal to 1.0 for utility structures and their supported facilities,
 C_d Shape Factor as defined as defined in NESC Rule 252B,
 A Projected wind area, m^2 (ft^2).

Table PSC 114.250-2 (Metric)
Velocity Pressure Exposure Coefficient, k_z
Gust Response Factor, G_{RF}

	$k_z \cdot G_{RF}$	
	<u>For Structures:</u>	<u>For Wires:</u>
For structures with a total height of 30 m or less above ground or water level	1.0	0.85
For structures with a total height exceeding 30 m above ground or water level	$0.93+0.00245(h)$	$0.78+0.00245(h)$

Table PSC 114.250-2 (English)
Velocity Pressure Exposure Coefficient, k_z
Gust Response Factor, G_{RF}

	$k_z \cdot G_{RF}$	
	<u>For Structures:</u>	<u>For Wires:</u>
For structures with a total height of 100 ft or less above ground or water level	1.0	0.85
For structures with a total height exceeding 100 ft above ground or water level	$0.93+0.00075(h)$	$0.78+0.00075(h)$

Where:

h = height of the structure above ground or water level. For wind loads on wires attached to the structure, the height of the highest wire attachment above ground or water level may be used if less than the height of the structure. In unique terrain where the height of the wire above ground at mid-span may be substantially higher than at the attachment point, engineering judgment may be used to determine an appropriate value the height of the wire.

Note: The height of all wire attachments should be based on the height of the highest attachment or total structure height. The formulas to determine $k_z G_{RF}$ were based on this premise, not the height of each attachment.

The wind pressure parameters (k_z , V , and G_{RF}) are based on open terrain with scattered obstructions (Exposure Category C as defined in ASCE 7-98). Exposure Category C is the basis of the NESC extreme wind criteria. Topographic features such as ridges, hills, and escarpments may increase the wind loads on site-specific structures. A topographic Factor, k_{zt} , from ASCE 7-98 may be used to account for these special cases.

(2) LONGITUDINAL CAPABILITY. [Follows NESC 250D, p. ~~193~~ 205] (Addition) Following NESC 250 D, Add add the following paragraph E:

SECTION 33. PSC 114.253 (intro.) is amended to read:

PSC 114.253 Load factors for structures, cross arms, support hardware, guys, foundations, and anchors. [NESC Table 253-1, p. ~~242~~ 225] Load factors for structures¹, cross arms, support hardware, guys, foundations, and anchors to be used with the strength factors of Table 261-1. (Changes)

SECTION 34. Chapter PSC 114 Section 26 is repealed.

SECTION 35. PSC 114.261 is repealed.

SECTION 36. PSC 114.302 (intro.) is amended to read:

PSC 114.302 Application of rules. [NESC 302, p. ~~233~~ 247] (Change) Change Rule 302 to read:

SECTION 37. PSC 114.310 (intro.) is amended to read:

PSC 114.310 Referenced sections. [NESC 310, p. ~~234~~ 248] (Change) Change Rule 310 to read:

SECTION 38. PSC 114.317 is amended to read:

PSC 114.317 Outdoor location of oil-insulated padmounted transformers near buildings. [Follows NESC 316, p. ~~236~~ 250] (Addition) Following NESC 316, Add add the following:

317. Outdoor location of oil-insulated padmounted transformers near buildings.

A. Noncombustible and Combustible Walls

For the purposes of this section, combustible walls are walls of Type No.V buildings as determined by Wisconsin Building Code (Construction Classification IBC Chapter 6). All other walls are considered to be non-combustible.

B. Noncombustible Walls

Padmounted oil-insulated transformers may be located directly next to noncombustible walls if the following clearances are maintained from doors, windows and other building openings.

1. Padmounted oil-insulated transformers shall not be located within a zone extending 6.1 m (20 ft) outward and 3.0 m (10 ft) to either side of a building door. See Figure PSC 114-317B1.

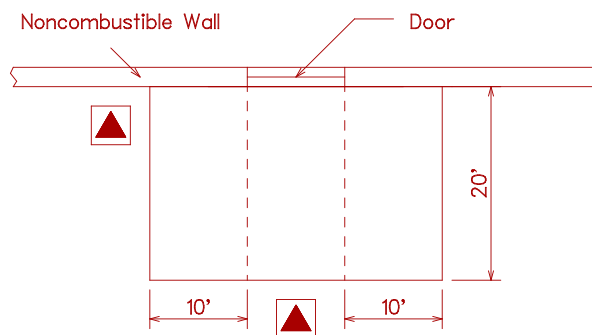


Figure PSC 114-317B1.

2. Padmounted oil-insulated transformers shall not be located within a zone extending 3.0 m (10 ft) outward and 3.0 m (10 ft) to either side of an air intake opening. Such transformers may be located within said zone beneath an air intake opening provided there is not less than 7.6 m (25 ft) diagonal separation between the transformer and said opening. See Figure PSC 114-317B2.

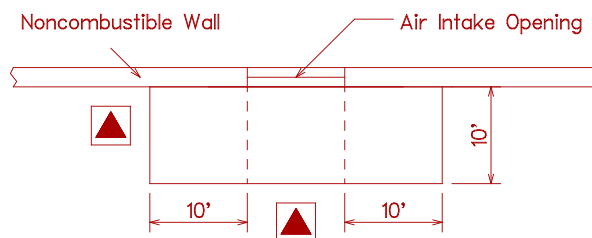


Figure PSC 114-317B2.

- 3.a. Padmounted oil-insulated transformers shall not be located within a zone extending 3.0 m (10 ft) outward and 0.9 m (3 ft) to either side of a building window or opening other than an air intake. See Figure PSC 114-317B3a.

Exception: This does not apply to a glass block or fire window meeting the requirements of the Wisconsin Commercial Building Code (Fire Window IBC Chapter 7, Section 714.3).

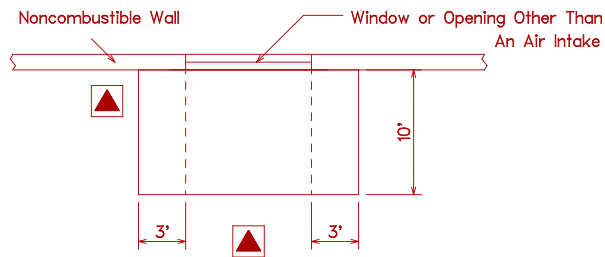


Figure PSC 114-317B3a.

3.b. For second story windows, the transformer shall not be located less than 1.5 m (5 ft) from any part of the window. See Figure PSC 317B3b.

Exception: This does not apply to a glass block or fire window meeting the requirements of the Wisconsin Commercial Building Code (Fire Window, IBC Chapter 7, Section 714.3).

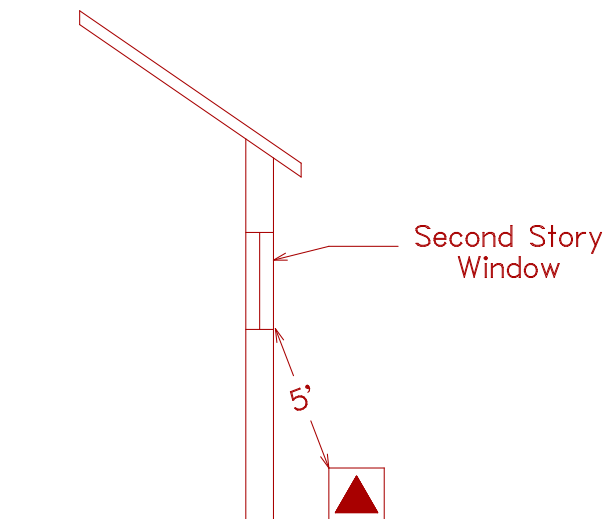


Figure PSC 114-317 B3b.

C. Combustible Walls

1. Padmounted oil-insulated transformers in sizes up to and including 100 kVA shall be located according to the provisions set forth in Subsection B for noncombustible walls.
2. Padmounted oil-insulated transformers in sizes above 100 kVA shall be located a minimum of 3.0 m (10 ft) from the building wall in addition to the clearances from building doors, windows and other openings set forth for noncombustible walls. ~~Also, a sump shall be installed for transformers in size exceeding 500 kVA if the immediate terrain is pitched toward the building.~~

D. Barriers

If the clearances specified in PSC 114.317 cannot be obtained, a fire-resistant barrier may be constructed in lieu of the required separation. The following methods of construction are acceptable:

1. Noncombustible Walls

The barrier shall extend to a projection line from the corner of the padmounted transformer to the furthest corner of the window, door or opening in question. The height of the barrier shall be 0.3 m (1 ft) above the top of the padmounted transformer. See Figure PSC 114-317D1.

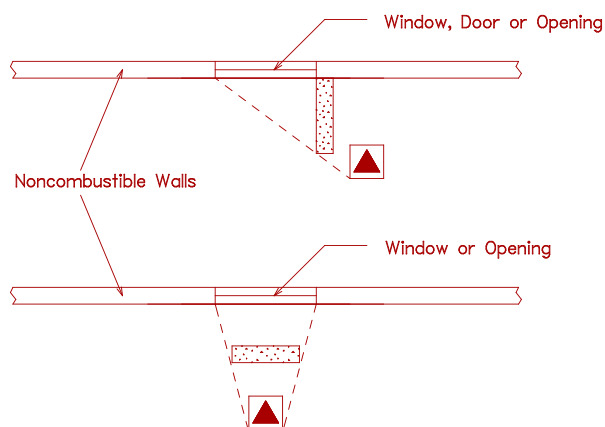


Figure PSC 114-317D1.

2. Combustible Walls

The barrier shall extend 0.9 m (3 ft) beyond each side of the padmounted transformer. The height of the barrier shall be 0.3 m (1 ft) above the top of the transformer. See Figure PSC 114-317D2.

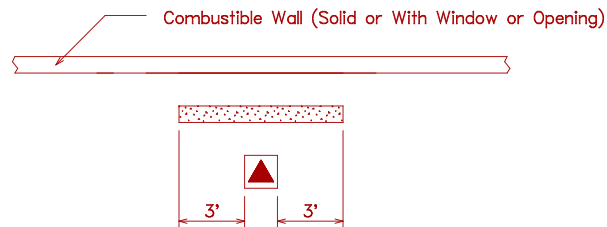


Figure PSC 114-317D2.

E. Fire Escapes

1. Padmounted oil-insulated transformers shall not be located within a zone extending 6.1 m (20 ft) outward and 3 m (10 ft) to either side of the point where a fire escape meets the ground. See Figure PSC 114-317E1.

2. Padmounted oil-insulated transformers located beneath fire escapes shall have a vertical clearance of not less than 3 m (10 ft) from the top of the transformer to the bottom of the fire escape. See Figure PSC 114-317E2.

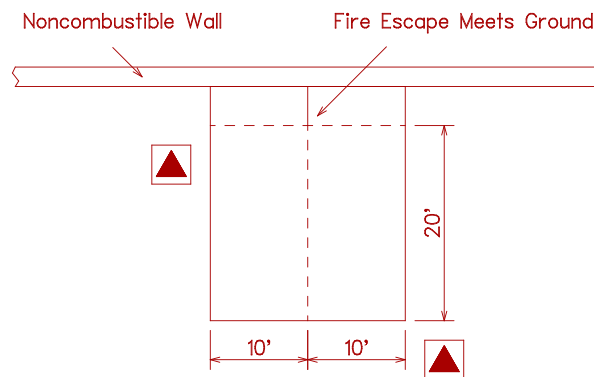


Figure PSC 114-317E1

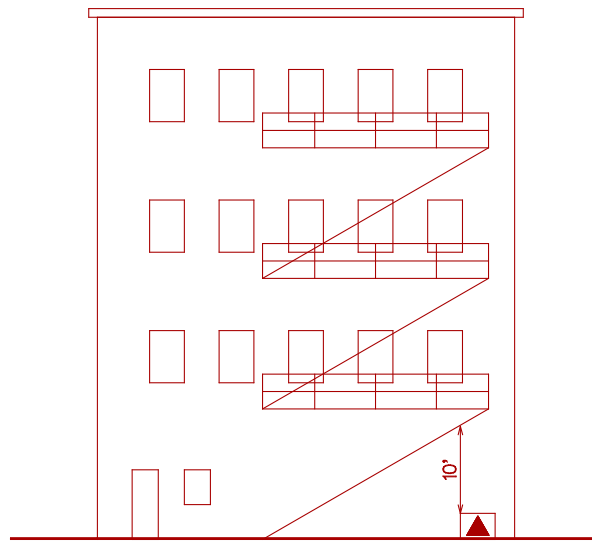


Figure PSC 114-317E2

SECTION 39. Chapter PSC 114 Section 32 is repealed.

SECTION 40. PSC 114.320 is repealed.

SECTION 41. PSC 114.323 is repealed.

SECTION 42. PSC 114.350 (intro.) is amended to read:

PSC 114.350 General. [NESC 350F, p. ~~248~~ 263] (Change) Change paragraph F to read:

SECTION 43. PSC 114.352 (intro.) is amended to read:

PSC 114.352 Installation. Table PSC 114.352-1 [NESC Table 352-1, p. ~~254~~ 266] Supply cable, conductor, or duct burial depth (Change and Addition)

SECTION 44. PSC 114.353 (intro.) is amended to read:

PSC 114.353 Deliberate separations—Equal to or greater than 300 mm (12 in) from underground structures or other cables. [Follows NESC 353D, p. ~~252~~ 267] (Addition)
Following NESC 353D, Add add the following paragraph E to read:

SECTION 45. PSC 114.354 is repealed and recreated to read:

PSC 114.354 Random separation – Separation less than 300 mm (12 in) from underground structures or other cables.

(1) SUPPLY AND COMMUNICATION CABLES OR CONDUCTORS [NESC 354D1g, p. 268] (Change)

Change paragraph g to read:

g. Adequate bonding shall be provided between the effectively grounded supply conductor or conductors and the communication cable shield or sheath at intervals that should not exceed 300 m (1,000 ft). At each above or below grade transformer or above or below grade pedestal, all existing grounds shall be interconnected. These include the primary neutral, secondary neutral, power cable shield, metal duct, or sheath and communication cable sheath. Communication protectors, communication service cable shields and secondary neutrals shall be connected to a common ground at each customer's service entrance when communication circuits are underground without separation from power conductors.

(2) INSULATING JACKETED EFFECTIVELY GROUNDED NEUTRAL SUPPLY CABLES. [NESC 354D3b Exception, p. 269] (Omission) The exception in Rule 354D3b of the NESC-2017 is omitted and not incorporated as part of the Wisconsin State Electrical Code, Volume 1.

(3) SUPPLY AND COMMUNICATION CABLES OR CONDUCTORS AND NON-METALLIC WATER AND SEWER LINES. [NESC 354E, p. 269] (Change) Change paragraph E to read:

E. Supply and communication cables or conductors, foundations and water and sewer lines.

1. Supply cables and conductors and water and sewer lines or foundations may be buried together with no deliberate separation between facilities and at the same depth, provided all parties involved are in agreement.
2. Communication cables and conductors and water and sewer lines or foundations may be buried together with no deliberate separation between facilities and at the same depth, provided all parties involved are in agreement.
3. Supply cables or conductors, communication cables or conductors, water and sewer lines or foundations may be buried together with no deliberate separation between facilities and at the same depth, provided the applicable rules in Rule 354D are met and all parties involved are in agreement.

SECTION 46. PSC 114.381 (intro.) is amended to read:

PSC 114.381 ~~Warning Signs~~ Design. [Follows NESC 381G, p. ~~257~~ 273] (Addition) Following NESC 381G, Add add paragraph H to read:

SECTION 47. Chapter PSC 114 Part 4 is amended to read:

**Part 4. Work Rules for the Operation of Electric Supply and
Communications Lines and Equipment**

SECTION 48. PSC 114.402 (intro.) is amended to read:

PSC 114.402 Referenced sections. [NESC 402, p. ~~261~~ 277] (Change) Change first sentence of NESC Rule 402 to read:

SECTION 49. PSC 114.410 is amended to read:

PSC 114.410 General requirements. [~~NESC 410A3 p. 262~~] [Follows NESC 410A3b Note 5, p. 279] (Addition) Add the following clarifying note to Rule 410A3b:

~~Note 4~~ **Note 6:** It is the intent of this rule that the facility owner and equipment owner cooperate to provide the necessary arc assessment of their respective areas of responsibility where work is to be performed. Either the facility owner or the equipment owner may request the appropriate information from the other party and perform the assessment on behalf of the other.