

## **NOTICE OF PROPOSED GUIDANCE DOCUMENT**

### **Red Light Running DSP113**

Pursuant to Wis. Stat. s. 227.112, the Wisconsin Department of Transportation is hereby seeking comment on Red Light Running DSP113, a proposed guidance document.

### **PUBLIC COMMENTS AND DEADLINE FOR SUBMISSION**

Comments may be submitted to the Wisconsin Department of Transportation for 21 days by:

1. Department's website:

<https://appengine.egov.com/apps/wi/dot/guidance-docs?guidDocId=DSP113>

2. Mailing written comments to:

Division of State Patrol  
Wisconsin Department of Transportation  
9<sup>th</sup> Floor South  
4822 Madison Yards Way  
Madison, WI 53705-9100

### **WEBSITE LOCATION OF FINAL GUIDANCE DOCUMENT**

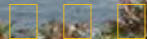
The final version of this guidance document will be posted at [wisconsindot.gov](http://wisconsindot.gov) to allow for ongoing comment.

### **AGENCY CONTACT**

[DOTDSPGuidanceDocs@DOT.WI.GOV](mailto:DOTDSPGuidanceDocs@DOT.WI.GOV)



## State of Wisconsin Department of Transportation



- DMV ONLINE
- DMV INFO ▾
- DOING BUSINESS
- TRAVEL ▾
- SAFETY ▾
- PROJECTS AND
- ABOUT WISDOT
- SERVICES ▾
- STUDIES ▾

# Red light running

[Safety education](#)

[Aggressive driving](#)

[Who is an aggressive driver?](#)

[Driving tips](#)

[Speeding](#)

[Red light running](#)

[Failure to yield](#)

[Tailgating](#)

[Weaving](#)

[How to respond](#)

Running a red light is no joke. Many people are killed or badly injured each year because someone cruised through a red light.

You may be in a hurry, you may think the light doesn't stay green long enough. Whatever your excuse, it's no reason to endanger the lives of other motorists, passengers, pedestrians or bicyclists who may be

in that intersection.

The law is clear on how you must behave at traffic signals:



Running a red light is no joke

## Green

Traffic facing a green signal may proceed straight through or turn right or left unless a sign prohibits either turn. Even with a green light, you should yield the right-of-way to other vehicles and to pedestrians lawfully within the intersection or a crosswalk.

## Yellow

When you see a yellow light with or following the green light, you should stop before entering the intersection unless you're so close to it that a stop may not be made safely. A yellow light does NOT mean it's time to speed up and race through the intersection. **That's how people get killed.**

## Red

Traffic facing a red signal must stop before entering the crosswalk or before entering the intersection and must remain stopped until the light changes to green or some other signal permitting movement such as a green arrow.

## Right turn on red

Traffic facing a red signal at an intersection may, after stopping, cautiously enter the intersection to make a right turn into the nearest lane for traffic moving to the right.

**Important:** As the result of [recent legislative action](#), traffic at an intersection with two dedicated right turn lanes, may turn right on a red signal from both lanes, if no sign at the intersection prohibits the turn. As always, on making a turn on a red signal, drivers must yield the right-of-way to pedestrians, bicyclists and other traffic lawfully using the intersection.

## Left turn on red

Traffic facing a red signal at an intersection may, after stopping, cautiously enter the intersection to make a left turn from a one-way highway into the nearest lane of a one-way highway on which traffic travels to the left.

## Green arrow

Traffic facing a green arrow signal may enter the intersection only to make the movement indicated by the arrow. But even with the green arrow, you must yield the right-of-way to pedestrians and bicyclists and to other traffic lawfully using the intersection. When the green arrow signal indicates a right or left turn traffic, cautiously enter the intersection.

## Flashing lights

- **Flashing red (stop signal)**  
When a red light is flashing, vehicles must stop before proceeding. A flashing red signal acts in much the same way as a stop sign.
- **Flashing yellow (caution signal)**  
When a yellow light is flashing, vehicles may proceed through the intersection cautiously.

## For more information:

- [Rules of the road, Chapter 346, Wisconsin Statutes](#)

### Contact Information

[Contact Us](#)

[Support](#)

[Translate website](#)

[Traducir el sitio de web](#)

### Forms/Notices

[Acceptable use policy](#)

[Forms](#)

[Legal notices](#)

[Privacy policy](#)

[Software information](#)



