

## **NOTICE OF PROPOSED GUIDANCE DOCUMENT**

Division of State Patrol Who We Are DSP136

Pursuant to Wis. Stat. s. 227.112, the Wisconsin Department of Transportation is hereby seeking comment on Ambulance Inspection DSP136, Wis. Stat. s. 346, a proposed guidance document.

### **PUBLIC COMMENTS AND DEADLINE FOR SUBMISSION**

Comments may be submitted to the Wisconsin Department of Transportation for 21 days by:

1. Department's website:

<https://appengine.egov.com/apps/wi/dot/guidance-docs?guidDocId=DSP136>

2. Mailing written comments to:

Division of State Patrol  
Wisconsin Department of Transportation  
9<sup>th</sup> Floor South  
4822 Madison Yards Way  
Madison, WI 53705-9100

### **WEBSITE LOCATION OF FINAL GUIDANCE DOCUMENT**

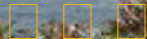
The final version of this guidance document will be posted at [wisconsin.dot.gov](http://wisconsin.dot.gov) to allow for ongoing comment.

### **AGENCY CONTACT**

DOTDSPGuidanceDocs@DOT.WI.GOV



# State of Wisconsin Department of Transportation



- DMV ONLINE
- DMV INFO ▾
- DOING BUSINESS
- TRAVEL ▾
- SAFETY ▾
- PROJECTS AND
- ABOUT WISDOT
- SERVICES ▾
- STUDIES ▾

## Speeding

- Safety education
- Aggressive driving
- Who is an aggressive driver?
- Driving tips
- Speeding
- Red light running
- Failure to yield
- Tailgating
- Weaving
- How to respond

## Speeding and other driver behaviors

Speeding in Wisconsin is...

### Deadly

- Speed-related crashes killed 163 people and injured more

than 8,000 in 2014.

- Deaths from speed-related crashes were approximately 33 percent of all Wisconsin traffic fatalities in 2014.

## Prevalent

- Speeding is by far the most common traffic conviction in Wisconsin.
- There were more than 142,000 speeding convictions in 2014.
- There also were approximately 7,500 convictions for driving too fast for conditions or imprudent speed in 2014.

## Expensive

- Speeding tickets generally cost from about \$200 to more than \$800 depending on the violation.
- Demerit points also are assessed and your license may be suspended.
- In addition, insurance premiums often increase because of speeding tickets.

## Entirely preventable

- Reducing your speed greatly improves your ability to maintain control of your vehicle, which prevents rollover crashes.
- Slowing down also gives you more time and distance to avoid a collision.
- If you cannot avoid a collision, vehicle speed at impact determines the violence of the crash. The higher your speed, the lower your chances of survival.
- Speed limits are set for when roads are clear and dry, not when they're snow or ice-covered. It is illegal to drive at speeds that exceed what is "reasonable and prudent" under existing road and traffic conditions.

## Other dangerous driving behaviors

- [Aggressive driving](#)
- [Tailgating](#)
- [Weaving through heavy traffic](#)
- [Distracted and inattentive driving](#)
- [Drowsy driving](#)
- [Red light running](#)
- [Failure to yield right of way](#)

More information about speed-related and other crashes, including county totals, is available in the latest [Wisconsin traffic crash facts](#).

## For more information:

- [Cell phones - driving and the law - know the facts](#)
- [Driving around trucks](#)

## Motorists' Handbook

- Older drivers

### Contact Information

Contact Us

□ Support

Translate website□

Traducir el sitio de web□

翻譯網站

Website übersetzen□

ترجمة الموقع

### Forms/Notices

Acceptable use policy

Forms

Legal notices

Privacy policy

Software information