

NOTICE OF PROPOSED GUIDANCE DOCUMENT

Temporary Plate Issued Online Instructions Page

Pursuant to Wis. Stat. s. 227.112, the Wisconsin Department of Transportation is hereby seeking comment Temporary Plate Issued Online Instructions Page s. 341 a proposed guidance document.

PUBLIC COMMENTS AND DEADLINE FOR SUBMISSION

Comments may be submitted to the Wisconsin Department of Transportation for 21 days by:

1. Department's website: <https://wisconsin.gov/Pages/online-srvcs/title-vehicle/emvpublicdefault.aspx>

2. Mailing written comments to:
Division of Motor Vehicles
Wisconsin Department of Transportation
4822 Madison Yards Way
PO Box 7336
Madison, WI 53707-7336

WEBSITE LOCATION OF FINAL GUIDANCE DOCUMENT

The final version of this guidance document will be posted at wisconsin.gov to allow for ongoing comment.

AGENCY CONTACT

DOTDMVGuidanceDocs@DOT.WI.GOV



State of Wisconsin Department of Transportation

- [DMV ONLINE SERVICES](#) ▾
- [DMV INFO](#) ▾
- [DOING BUSINESS](#) ▾
- [TRAVEL](#) ▾
- [SAFETY](#) ▾
- [PROJECTS AND STUDIES](#)
- [ABOUT WISDOT](#) ▾

Temporary plate issued online instructions page

[eMV Public application](#)

[Instructions](#)

[Frequently asked questions](#)

[Glossary](#)

Temporary license plate display instructions

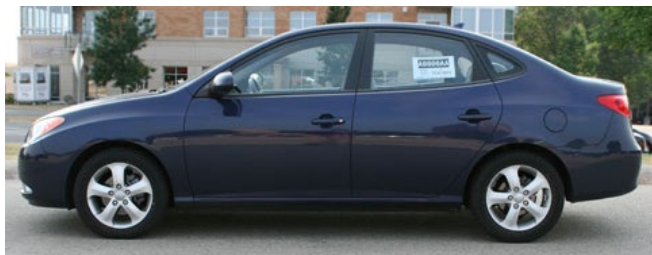
Tape the temporary plate inside lower corner of rear window on the driver's side:



Primary location for temporary plate

If you are unable to display the plate due to window size, tape temporary plate to rear passenger

window on the driver's side (see example below):



Secondary location for temporary plate

Questions?

Email [Wisconsin DMV email service](#)

Contact Information

[Contact Us](#)

[Support](#)

[Translate website](#)

[Traducir el sitio de web](#)

[翻譯網站](#)

[Website übersetzen](#)

[ترجمة الموقع](#)

[Tshais website](#)

[웹 사이트 번역](#)

[Перевести сайт](#)

Forms/Notices

[Acceptable use policy](#)

[Forms](#)

[Legal notices](#)

[Privacy policy](#)

[Software information](#)

WisDOT Employees

[Employee information](#)

[PTA web](#)

[HR Self-Service](#)

[Travel Expenses](#)

[WisDOT LearnCenter](#)

