

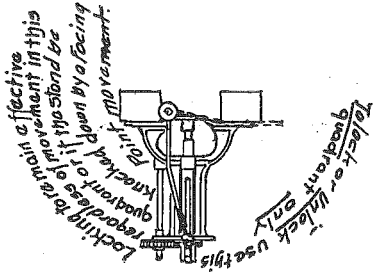
**Chapter PSC 84****SAFETY CLAMPS FOR RAILROAD SWITCHES**

PSC 84.01 Safety clamps ordered  
PSC 84.02 Exceptions

**PSC 84.01 Safety clamps ordered.** All railroads operated as common carriers in this state shall equip all main line switches (except only trailing switches in double track automatic block territory and within the limits of interlocking plants) with a safety clamp as illustrated in a blue print of a typical device attached to and made a part of this order or its equivalent, and keep the same padlocked in a locked position when not necessary to open the same for switching purposes.

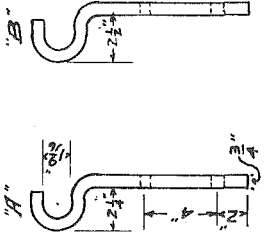
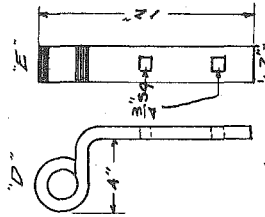
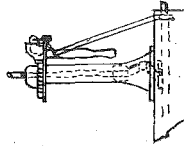
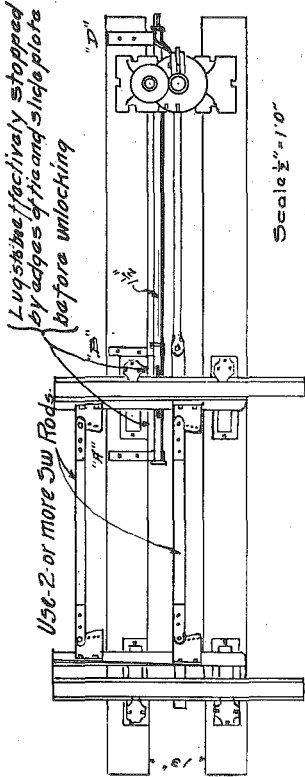
*Note:* A copy of the blue print appears on the following page.

**PSC 84.02 Exceptions.** If any such railroad desires to use a locking device other than called for in this order, it may make a written request for permission so to do accompanied by detailed plans and if it appears to this commission that the device will retain its locking feature regardless of defects or breaks in switch rods and connecting rod and their appurtenances or derangement of switch stand by a facing point movement, such permission will be granted.



Typical Safety Clamp for Main Line Switches.  
 A method of complying with sec 192.28 of Wis. Statutes as set forth in W.R.C. Order of March 28, 1927. R 3512.

Engineering Dept.  
Railroad Commission  
Wisconsin 3-23-27.



Scale 1" = 1'0"

