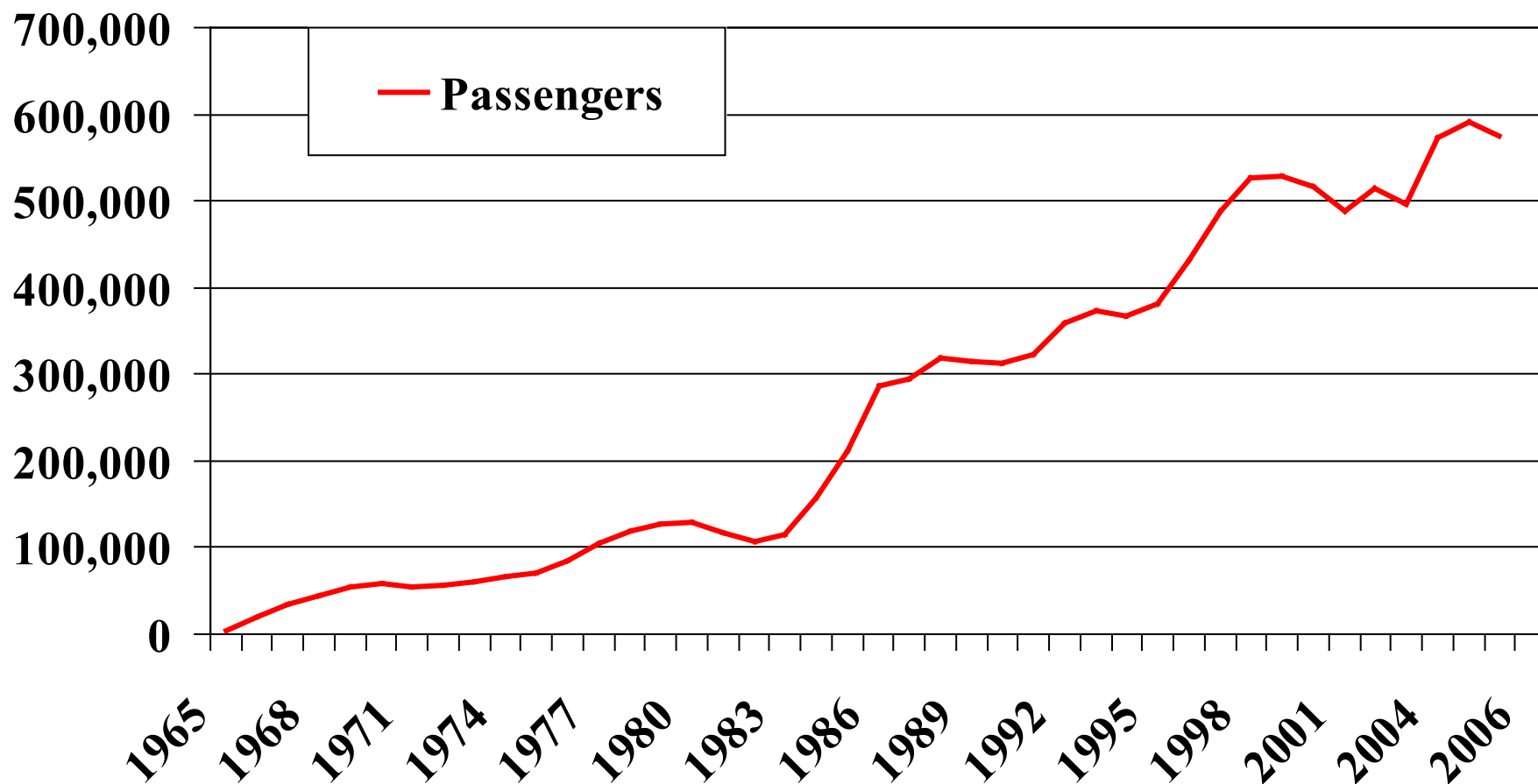


# Outagamie County Regional Airport

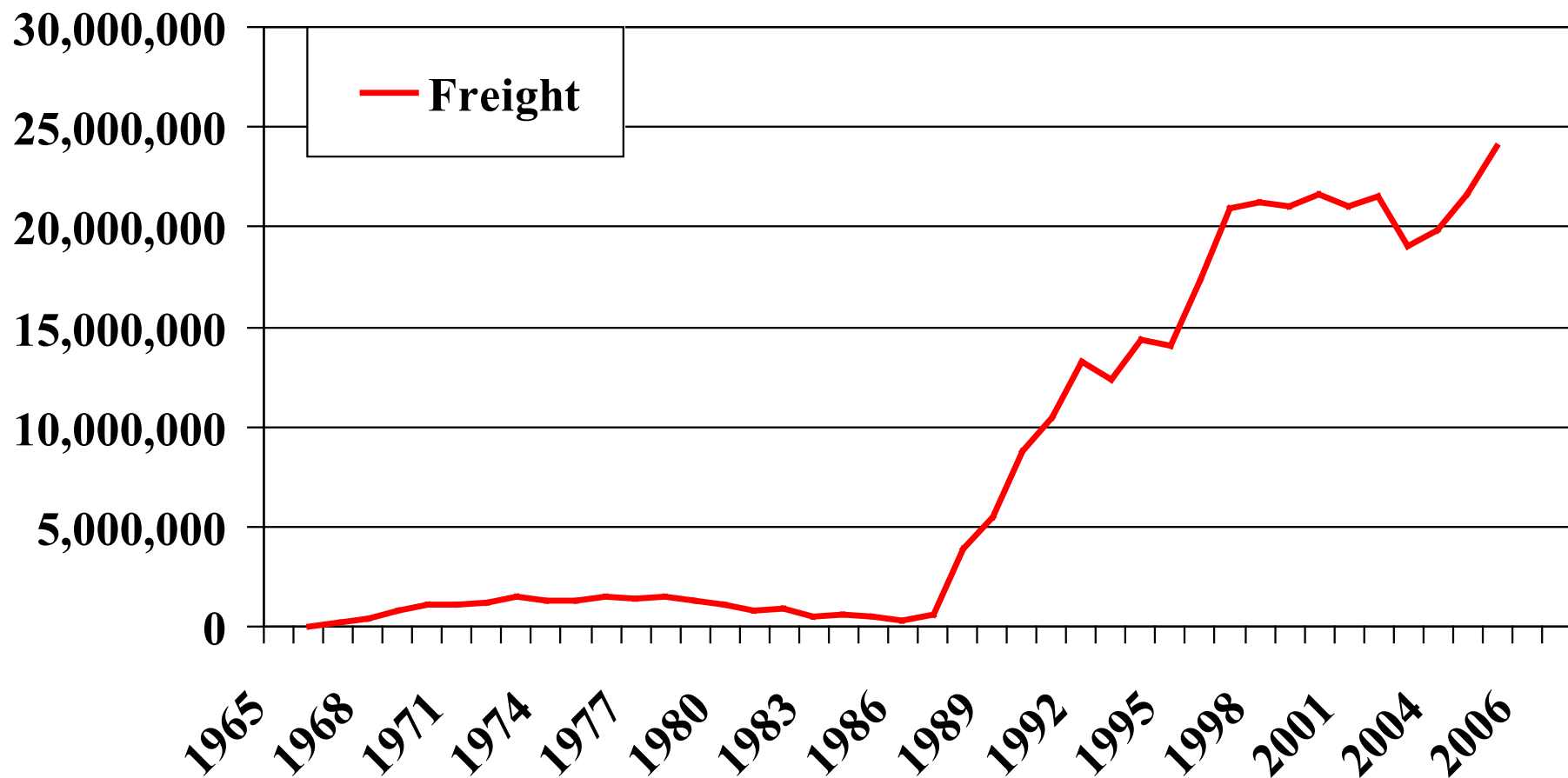


1965 – 2006 & Beyond

# Outagamie County Regional Airport Passengers 1965–2006



# Outagamie County Regional Airport Freight 1965–2006



# Background

Outagamie County Regional Airport began operations at its current location August 23, 1965 with only 28 acres and 4 buildings. The airport's current facilities are far different nearly 40 years later, with over 20 buildings and approximately 117 acres of paved surfaces situated on 1697 acres. The Outagamie County Regional Airport continues to grow with the completion of its new 12.3 million dollar terminal expansion and renovation project. The new 30,000 square foot addition has 8 gates, 5 of which are equipped with jet boarding bridges and a capacity of up to 425,000 enplaned passengers in 2004.

The Airport is home to Four Airlines, Air Traffic Control Tower, The TSA, A Restaurant, A Gift Shop, Standard Parking, FedEx, Airborne Express, MaxAir, Gulfstream Aerospace, Four Rental Car Companies, and many other private companies that use the airport frequently.



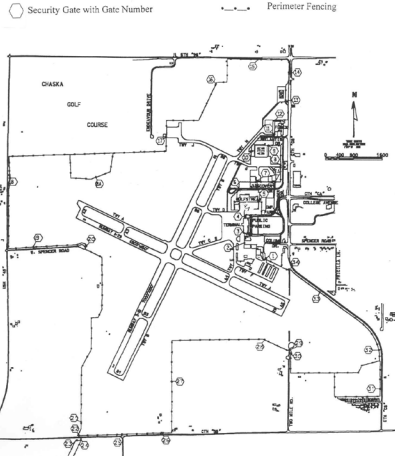
# Community Impact

- The Outagamie County Regional Airport represents the 4th largest commercial service airport in Wisconsin accounting for:
  - \$108 million in direct economic sales
  - 1,300+ Full-time jobs
  - \$54 million in direct wages to the region and state economy
- The airport plays a critical role in fostering business growth and economic development in the region, enplaning over 250,000 passengers, and 10 million pounds of freight and mail annually. Realizing the need for such a vital asset WisDOT has invested over \$18 million in federal, state, and local funds for improvements at the airport to preserve existing facilities, enhance safety, meet the increasing demand for commercial service air travel and support economic growth and development in the region.
- Tenants at the airport employ:
  - Gulfstream: Over 750 with plans to add more staff
  - FedEx: 96
  - Air Wisconsin: Over 260 with plans to add more staff
  - And other tenants employ a total in excess of 200 hundred employees combined

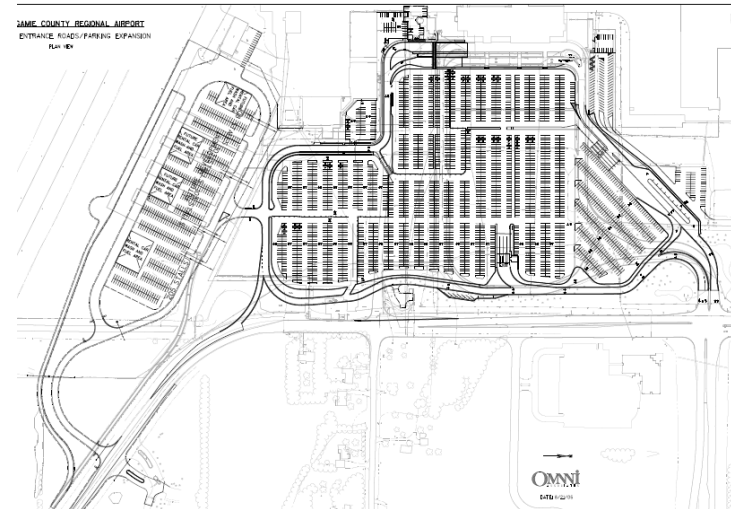


# Airport Current Growth

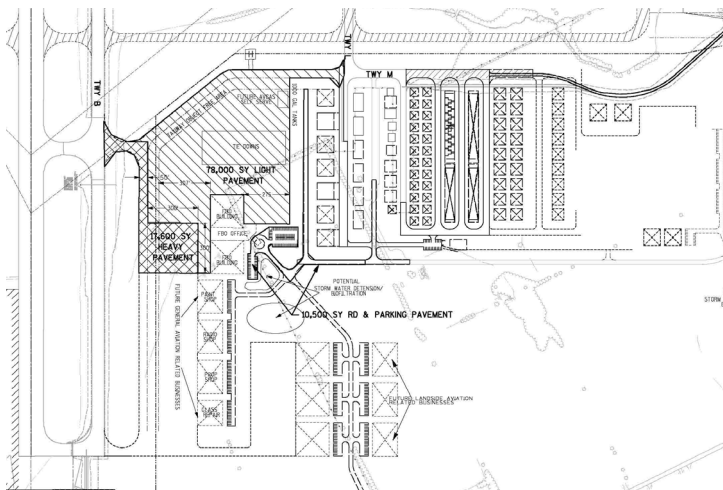
## Install CCT & Security Cameras



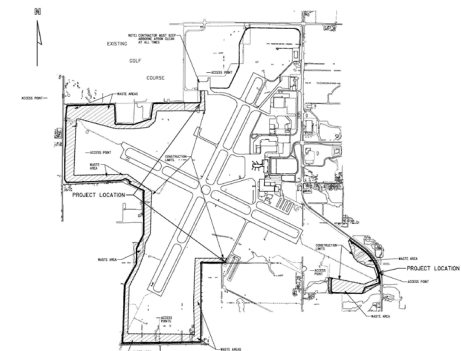
## Expanded Parking To be completed in 2007



## New South GA Facility To be completed in 2007

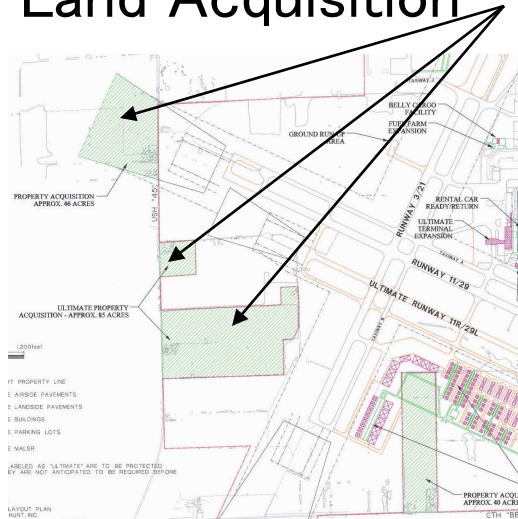


## New Perimeter Road To be completed in 2007

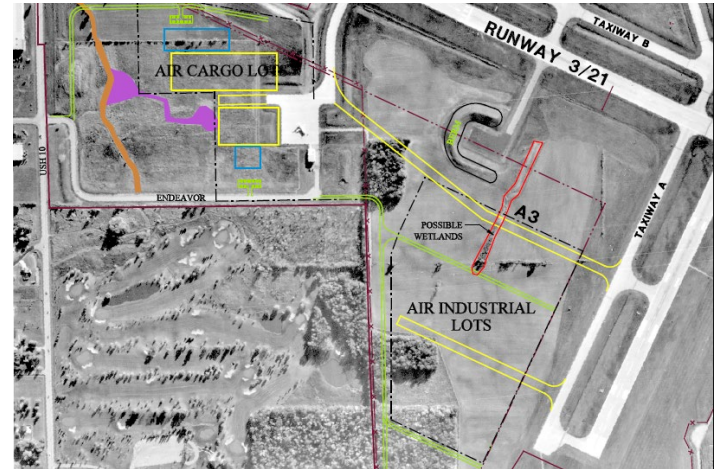


# Airport Future Growth

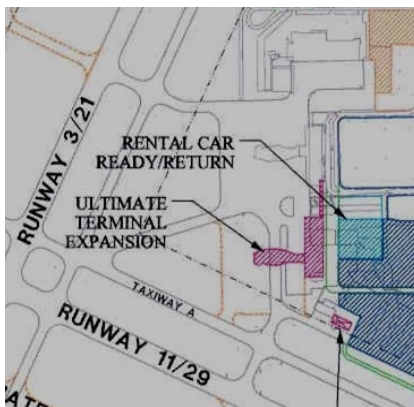
## Land Acquisition



## Business Park Development



## Terminal Building Expansion



## Control Tower Study

