



Special Committee on Permanency Requested Out-of-Home Care Data



July 24, 2012

**Department of Children and Families
Follow-Up Presentation**

Safety and Permanence Statewide



Presented by:

- MaryAnn Lippert, Executive Assistant
- John Elliott, Deputy Administrator
- Michelle Rawlings, Research and Program Operations Section Chief

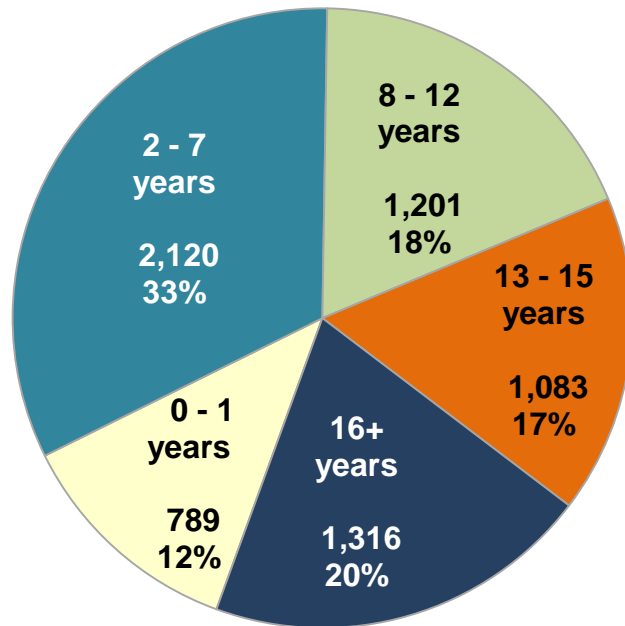
Please feel free to contact MaryAnn Lippert with any comments or questions at 608-261-6588 or at: MaryAnn.Lippert@wisconsin.gov.

Safety and Permanence Statewide

Data from 6/27/12

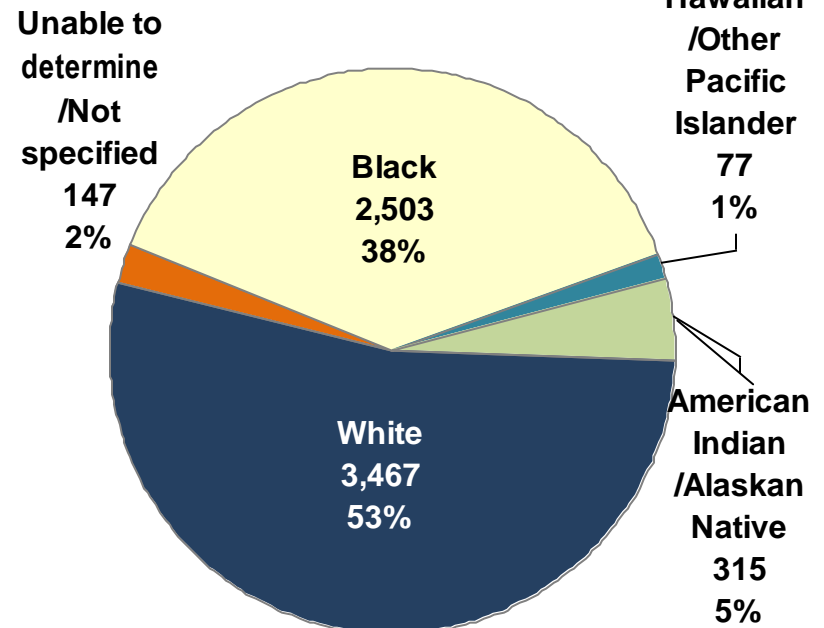
Age and Race for Children in Out-of-Home Care (December 31, 2010)

By Age



Note: Average Age of a Child in OHC is 9 Years Old

By Primary Race

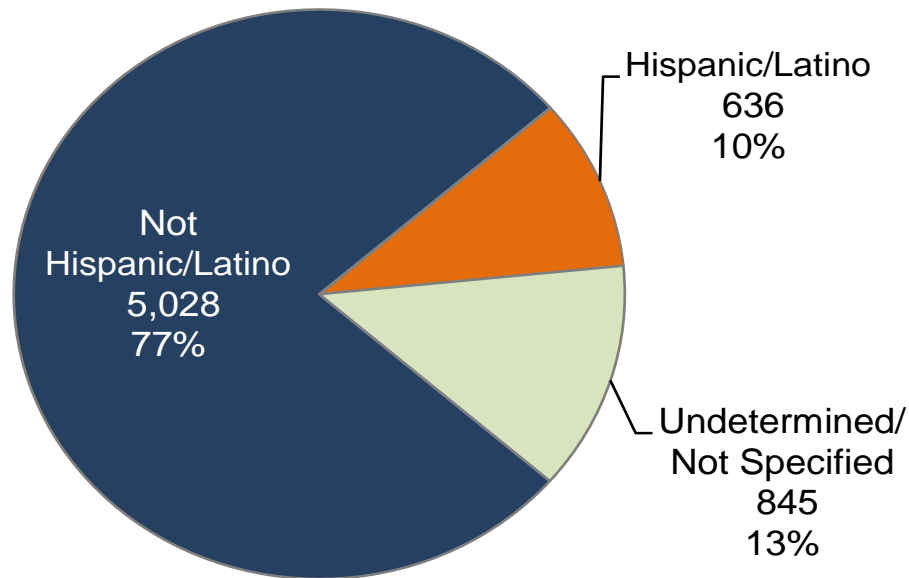


Safety and Permanence Statewide

Requested Data

Q: How many children in Out-of-Home Care are of Hispanic ethnicity?

**Children in out-of-home care with Hispanic/Latino ethnicity
on December 31, 2010
Total = 6,509**



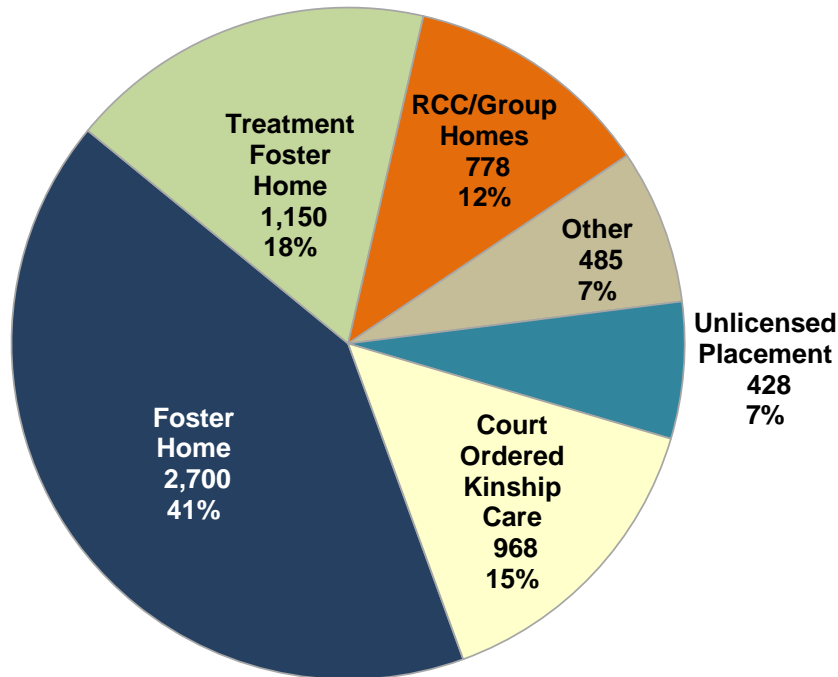
Q: Please provide link to Disproportionality Study:

<http://www.lafollette.wisc.edu/publications/workshops/2009/racial.pdf>

Safety and Permanence Statewide

Data from 6/27/12

Placement Setting for Children in Out-of-Home Care (CY 2010)



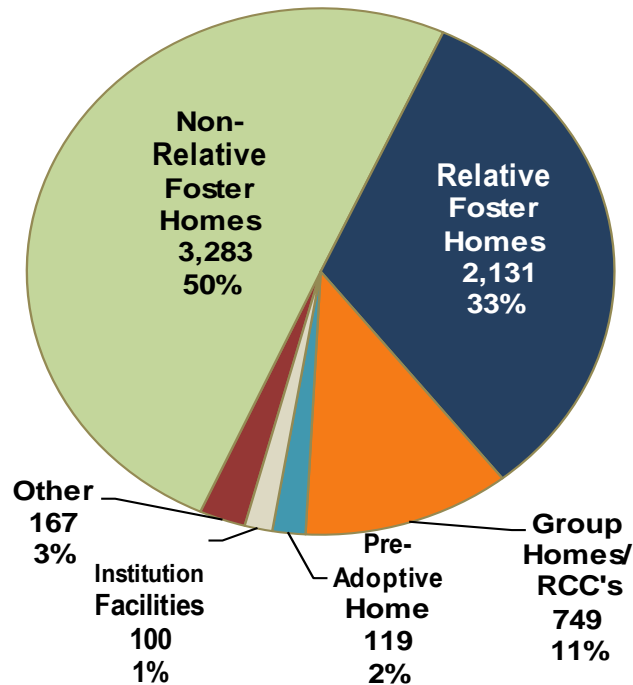
- **Foster Home:** Family foster homes are licensed by local child welfare agencies based on state statutes and can include both related and unrelated individuals.
- **Treatment foster homes:** Foster homes that are licensed by child placing agencies, either through a county or a private agency that typically serve children with more intensive needs that require specialized care.
- **Group Homes:** Facility operated by a person licensed by the Department to provide 24 hour care for 5-8 residents. Group Homes can be either private family homes or corporate homes.
- **Residential Care Centers (RCCs):** Residential facilities serve children who have significant needs that cannot be addressed in a community setting.
- **Other:** other placements setting include shelter care, detention, hospitals, mental health facilities, youth or adult correctional facilities, children missing from care, and trial reunifications.
- **Unlicensed Placement:** Out-of-Home Care placements where children are placed with non-licensed relatives and do not receive payments. These homes are subject to all permanency planning requirements.
- **Court-ordered Kinship Care (COKC):** Out-of-Home Care placements where children are placed with non-licensed relatives and receive kinship care payments. These homes are subject to all permanency planning requirements.

Safety and Permanence Statewide

Requested Data

Q: How many children in Out-of-Home Care are placed with relatives?

**Children in Out-Of-Home Care
on March 31, 2012
by Placement Setting**



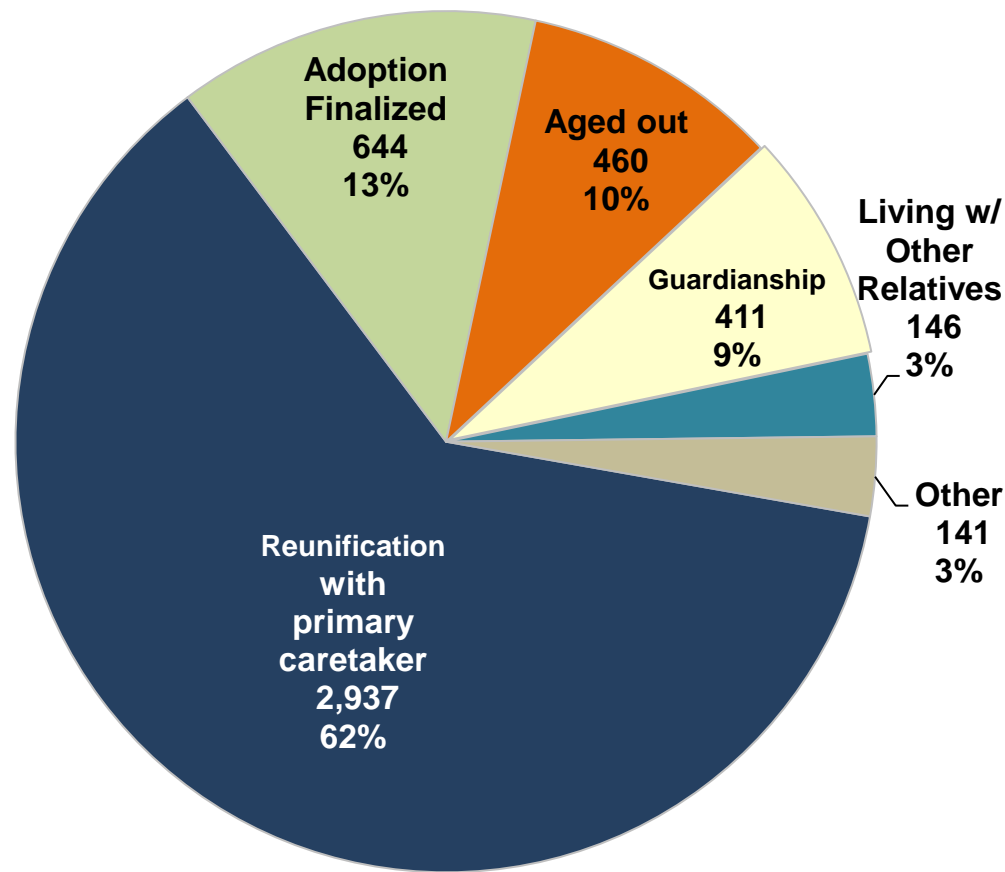
Notes:

- “Other” includes the following:
 - Shelter;
 - Supervised Independent Living;
 - Trial Reunification;
 - Receiving Home;
 - Missing from Out-of-Home Care.
- Institution Facilities includes the following:
 - Adult Corrections;
 - Juvenile Corrections;
 - Detention;
 - Hospital.

Safety and Permanence Statewide

Data from 6/27/12

Permanency Outcomes for Children in Out-of-Home Care (CY 2010)



Other: includes transfer to another state institution or facility, death of a child, and missing from out of home care.

Safety and Permanence Statewide

Requested Data

Q: How long have aged-out youth been in OHC and what was their county of residence?

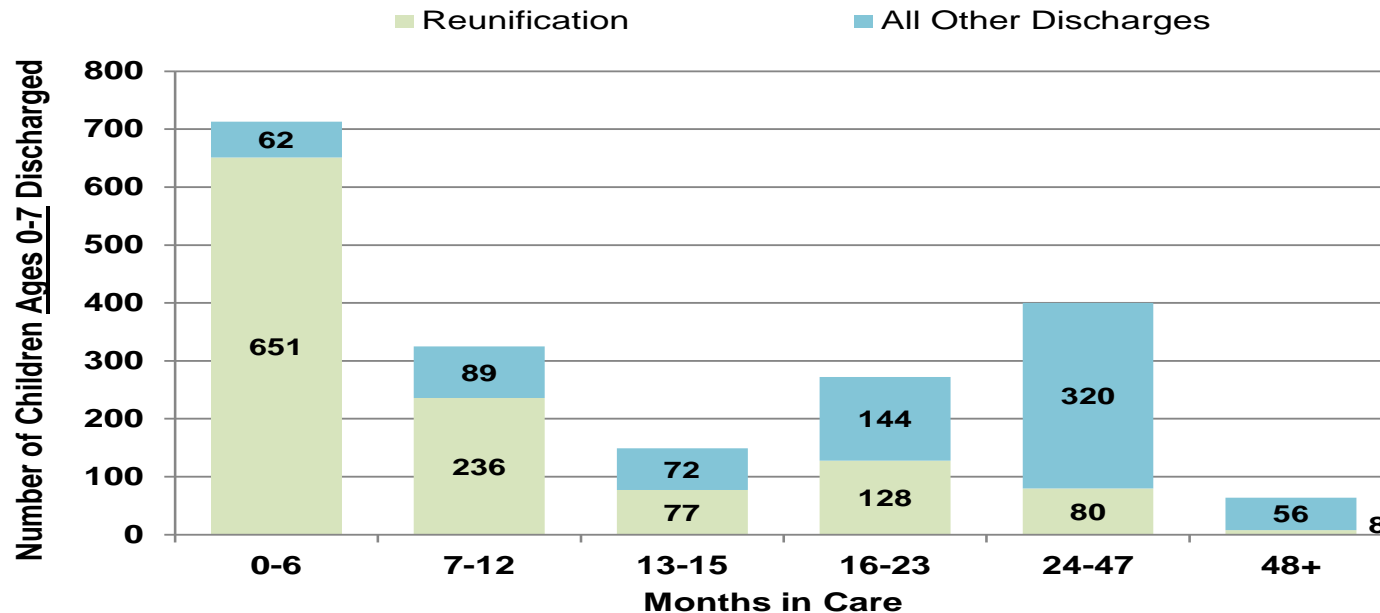
County	0 - 6 Months	7 - 12 Months	13 - 15 Months	16 - 23 Months	24 - 47 Months	48+ Months	Total
State Total	38	39	24	61	143	155	460
Adams							0
Ashland					1		1
Barron		1		1		1	3
Bayfield							0
Brown	1	1		1	6	5	14
Buffalo	1						1
Burnett						1	1
Calumet						1	1
Chippewa		1			1	1	3
Clark						2	2
Columbia						2	2
Crawford						2	2
Dane		2		2	9	4	17
Dodge	1	2		3	2	2	10
Door					1		1
Douglas							0
Dunn					1		1
Eau Claire			1		2	2	5
Florence							0
Fond du Lac					1	5	6
Forest							0
Grant	2	1				1	4
Green	1				1		2
Green Lake					3		3
Iowa	1						1
Iron							0
Jackson	1				1		2
Jefferson				1		1	2
Juneau					1		1
Kenosha	1	3	1	4	8	7	24
Kewaunee		1					1
La Crosse	1			1		5	7
Lafayette							0
Langlade		1	1	1	1		4
Lincoln							0
Manitowoc		1	1	1			3

County	0 - 6 Months	7 - 12 Months	13 - 15 Months	16 - 23 Months	24 - 47 Months	48+ Months	Total
Marathon		2		2	3		7
Marquette					1		0
Marquette					1		1
Menominee							0
Milwaukee	12	9	14	20	51	76	182
Monroe			1	1	1	3	6
Oconto				1		1	2
Oneida	1				3	1	5
Outagamie	1	2			4		7
Ozaukee	1			1			2
Pepin	1						1
Pierce		1			1		2
Polk	1			1		1	3
Portage	1		1	1	1	2	6
Price					5		5
Racine	4	1		4	4	3	16
Richland		1			1		2
Rock					4	3	7
Rusk					1		1
Saint Croix				1		1	2
Sauk	1			2	2	1	6
Sawyer					1		1
Shawano					1		1
Sheboygan		1		1	1	1	4
State						2	2
Taylor							0
Trempealeau				1			1
Vernon							0
Vilas		1		1			2
Walworth		2			1	1	4
Washburn	1				1	2	4
Washington	1	1	2		1	1	6
Waukesha	1	1		3	3	3	11
Waupaca		1		2	1	1	5
Waushara			1		2		3
Winnebago	1	2		1	5	6	15
Wood	1		1	3	5	4	14

Safety and Permanence Statewide

Data from 6/27/12

*Comparison of Reunification Rate by Months in Out-of-Home Care
Children Ages 0-7 Discharged (CY 2010)*

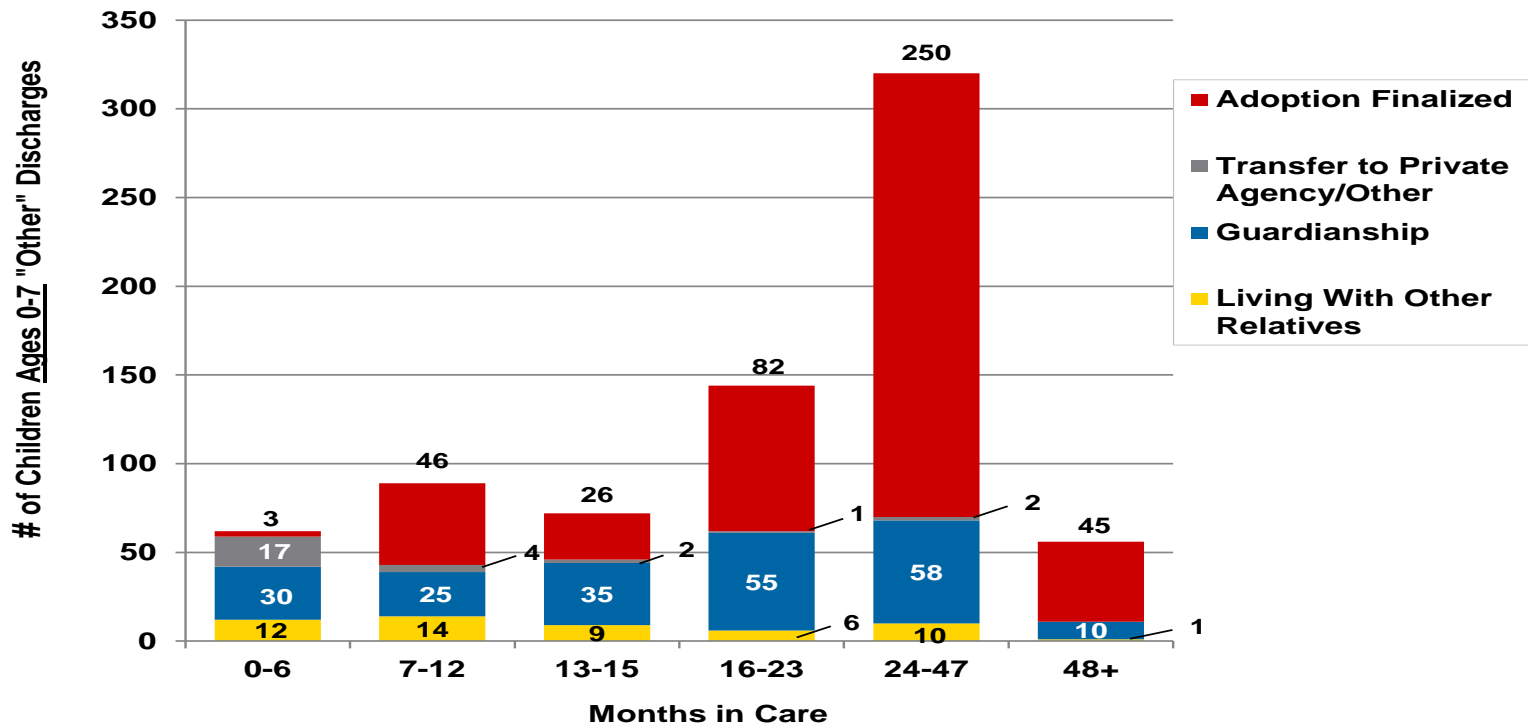


	Months in Care						Total
	0-6	7-12	13-15	16-23	24-47	48+	
% of Reunifications	55%	20%	7%	11%	7%	1%	100%
% of all other discharges	8%	12%	10%	19%	43%	8%	100%

Safety and Permanence Statewide

Requested Data

Q: Please provide more information about outcomes for children who are not reunified.



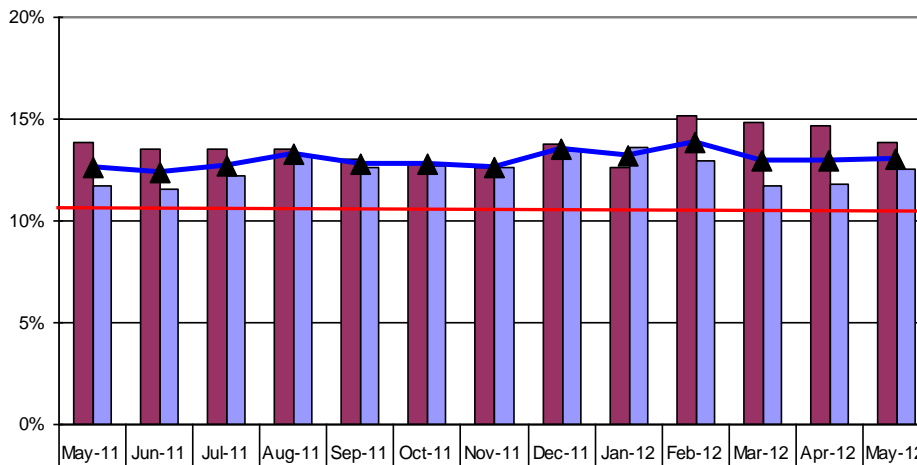
Safety and Permanence Statewide

Data from 6/27/12

Children spend minimal time in out-of-home care.

How many children who have been in OHC 17 or more continuous months became legally free for adoption during the first 6 months of the year shown?

Percentage of Children Who Became Legally Free During First Six Months of Year Shown



Analysis

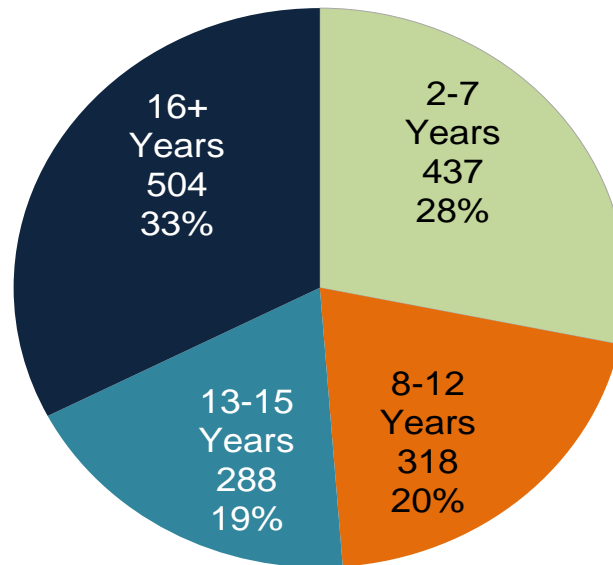
- The federal 75th percentile target of 10.9% is represented by the red line.
- The state has consistently exceeded the federal benchmark in every month of the past 12 months.

Safety and Permanence Statewide

Requested Data

Q: What are the ages of children in OHC for at least 17 months who are not legally free for adoption?

**Children without TPR status
by Age Range**



100% of the 87%

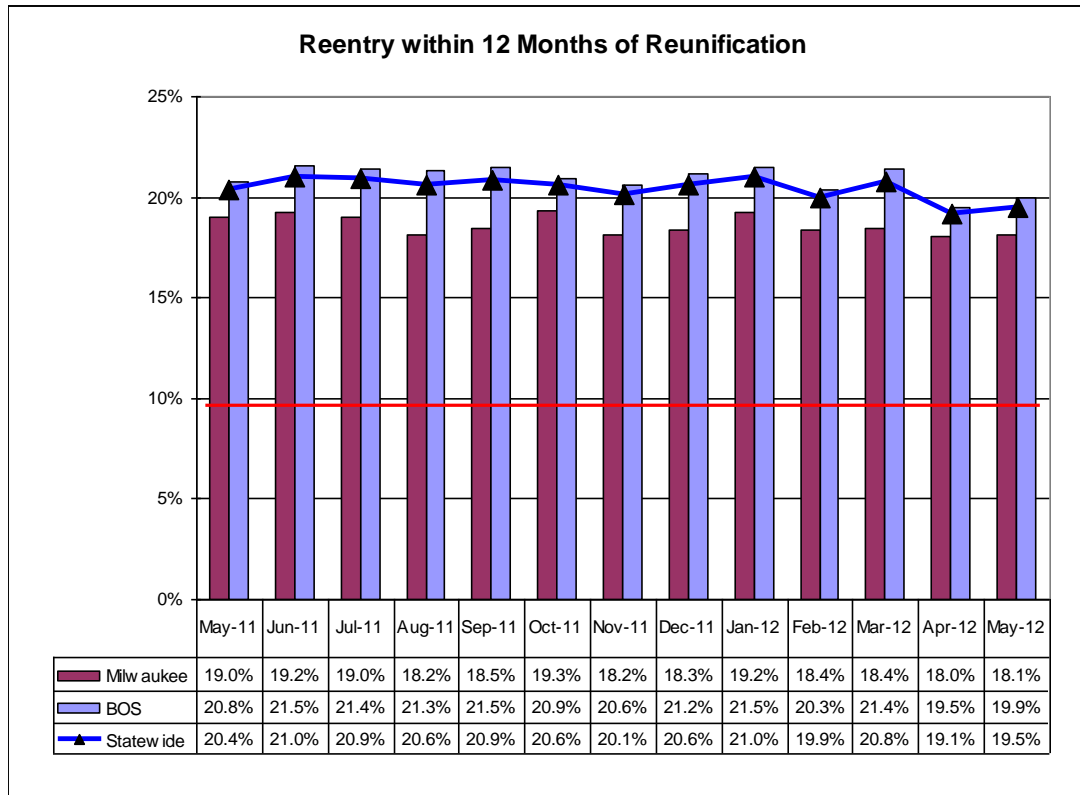
Note: There is a single child, age one, not depicted in the chart above.

Safety and Permanence Statewide

Data from 6/27/12

Children spend minimal time in out-of-home care.

How many children re-enter OHC within 12 months from the date of discharge?



Analysis

- The federal 25th percentile target of 9.9% is represented by the red line.
- The state consistently has not met the federal benchmark.

Safety and Permanence Statewide

Requested Data

Q: How many children re-enter OHC after 12 months, by age?

Re-entry Rate of Children into Out-of-Home Care by Age

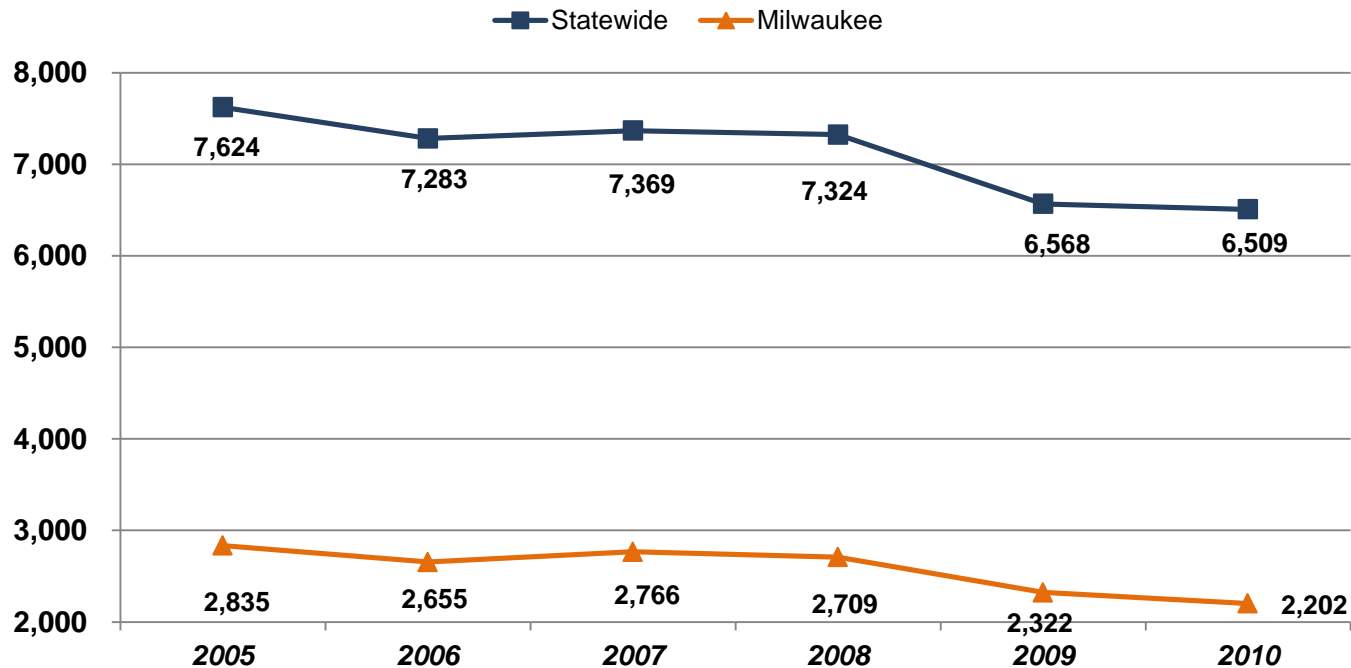
May 2012

	No Re-Entry	0-12 Months	13-24 Months	25-36 Months	37+ Months	Total Children
0-1 Years	105	26	1			132
2-7 Years	802	196	48	17	5	1,068
8-12 Years	434	103	28	15	22	602
13-15 Years	448	204	40	6	29	727
16+ Years	314	41	15	12	13	395
Total	2,103	570	132	50	69	2,924
Rate	71.9%	19.5%	4.5%	1.7%	2.4%	100.0%

Safety and Permanence Statewide

Data from 6/27/12

Total Number of Children in Out-of-Home Care on December 31st



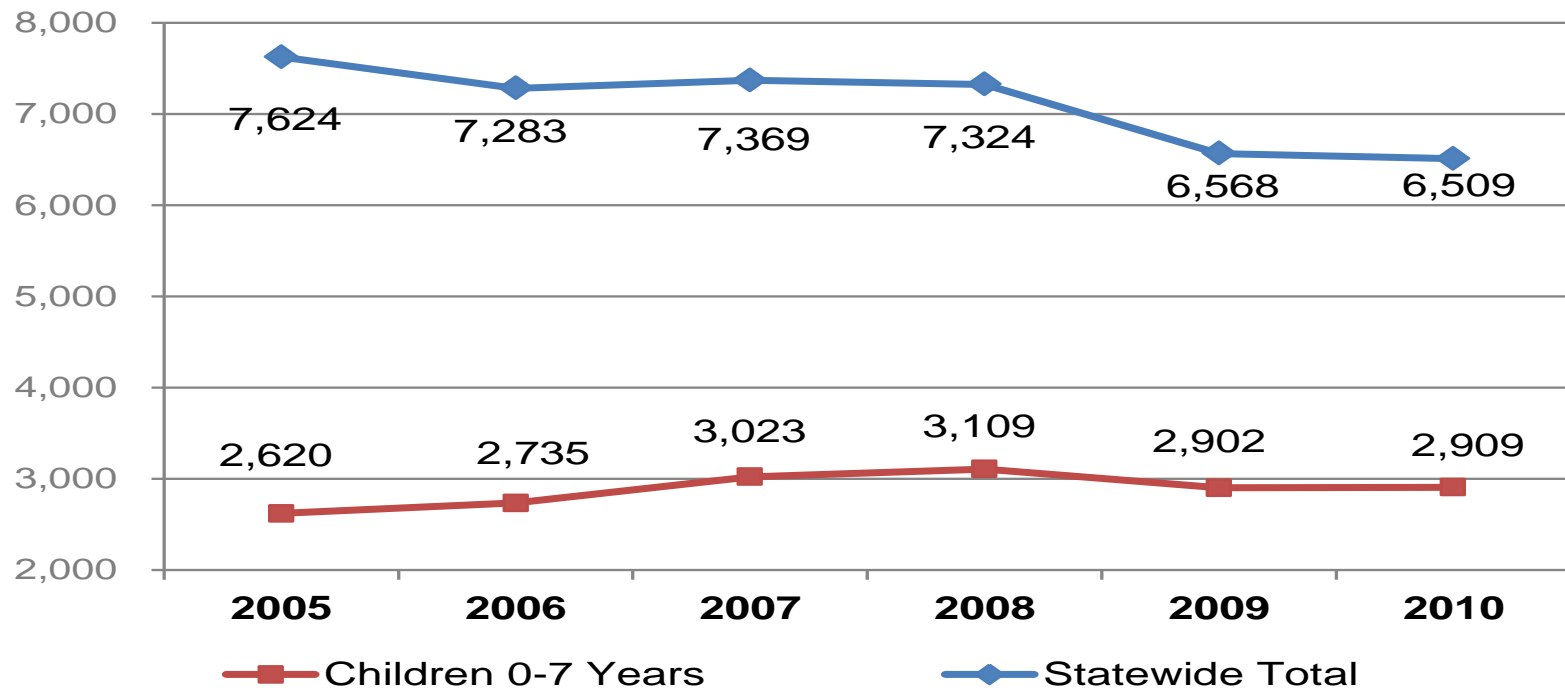
Change %	2006	2007	2008	2009	2010
Statewide	-4.47%	1.18%	-0.61%	-10.32%	-0.90%
Milwaukee	-6.35%	4.18%	-2.06%	-14.29%	-5.17%

Safety and Permanence Statewide

Requested Data

Q: What is the 2005-2012 OHC caseload data for children under age 8

Children in Out-of-Home Care Statewide and 0-7 Years Comparison on December 31st



Safety and Permanence Statewide

Requested Data

Q: After a TPR is granted, how long until adoption is completed?

Child Age at Adoption	Median Time from TPR to Adoption in Days
0-1	82
2-7	194
8-12	213
13-15	279
16+	132
Total Median	165

- The TPR filing date can be documented in the data system, but it is not a required field; as such, data is not consistently documented and the results are not reliable.
- The Division is working with the Director of State Courts Office (DSCO) Children's Court Improvement Program to explore ways in which data from our respective systems can be used to better understand the length of time between a TPR file date and subsequent TPR order date

Safety and Permanence Statewide

Requested Data

Q: What are the trends in special needs adoptions over the past 6 years?

Special Needs Adoption Finalizations on December 31st

