



Wisconsin Child Abuse and Neglect Report

Appendices

2010 Data

Bureau of Program Integrity
Division of Safety and Permanence
Wisconsin Department of Children and Families

APPENDIX A

Child Maltreatment Related Statutes

Following are excerpts from the Wisconsin statutes that create the basis for persons to report suspected child maltreatment and for child protective services agencies to respond. The excerpts are from the updated 2007-2008 Wisconsin statutes, current as of March 31, 2010. (**Note:** The excerpts appear exactly as they would appear in the published statutes. Therefore, other portions of the statutes not relevant to child maltreatment are included.)

Included in the excerpts are sections from chapter 48, known as the Children's Code, and sections from criminal statutes that are cross-referenced in the Children's Code in order to define child.

- **s. 48.01, Stats., Title and legislative purpose.**
- **s. 48.02, Stats., Definitions.** This includes definitions of child maltreatment.
- **s. 48.13, Stats., Jurisdiction over children alleged to be in need of protection or services.** This describes the basis on which the local child protective services agencies (county social/human services departments and the Bureau of Milwaukee Child Welfare) may petition the court to intervene with a family.
- **s. 48.981, Stats., Abused or neglected children and abused unborn children.** This section defines child neglect, describes the reporting requirements of alleged child maltreatment and describes the child protective services agencies' duties and responsibilities.
- **s. 939.22, Stats., Words and phrases defined.** This section defines terms that are used in describing certain crimes, some of which are cross-referenced in s. 48.02, Stats., in order to define child maltreatment.
- **s. 940.225, Stats., Sexual assault.** This defines the crime of sexual assault and is cross-referenced under s. 48.02(1)(b), Stats.
- **s. 944.30, Stats., Prostitution.** This defines the crime of prostitution and is cross-referenced under s. 48.02(1)(d), Stats.
- **s. 948.02, Stats., Sexual assault of a child.** This is the first in a series of crimes from chapter 948, known as Crimes Against Children that are cross-referenced under s. 48.02(1)(b), Stats., in order to define child sexual abuse. The following sections are also cross-referenced under s. 48.02(1), Stats.:
 - **s. 948.025, Stats., Engaging in repeated acts of sexual assault of the same child.**
 - **s. 948.05, Stats., Sexual exploitation of a child.**
 - **s. 948.055, Stats., Causing a child to view or listen to sexual activity.**
 - **s. 948.085, Stats., Sexual assault of a child placed in substitute care.**
 - **s. 948.10, Stats., Exposing genitals or pubic area.**

The complete Wisconsin statutes can be viewed at the Wisconsin State Legislature website: <http://www.legis.state.wi.us/rsb/stats.html>.

APPENDIX B**Unborn Child Abuse**

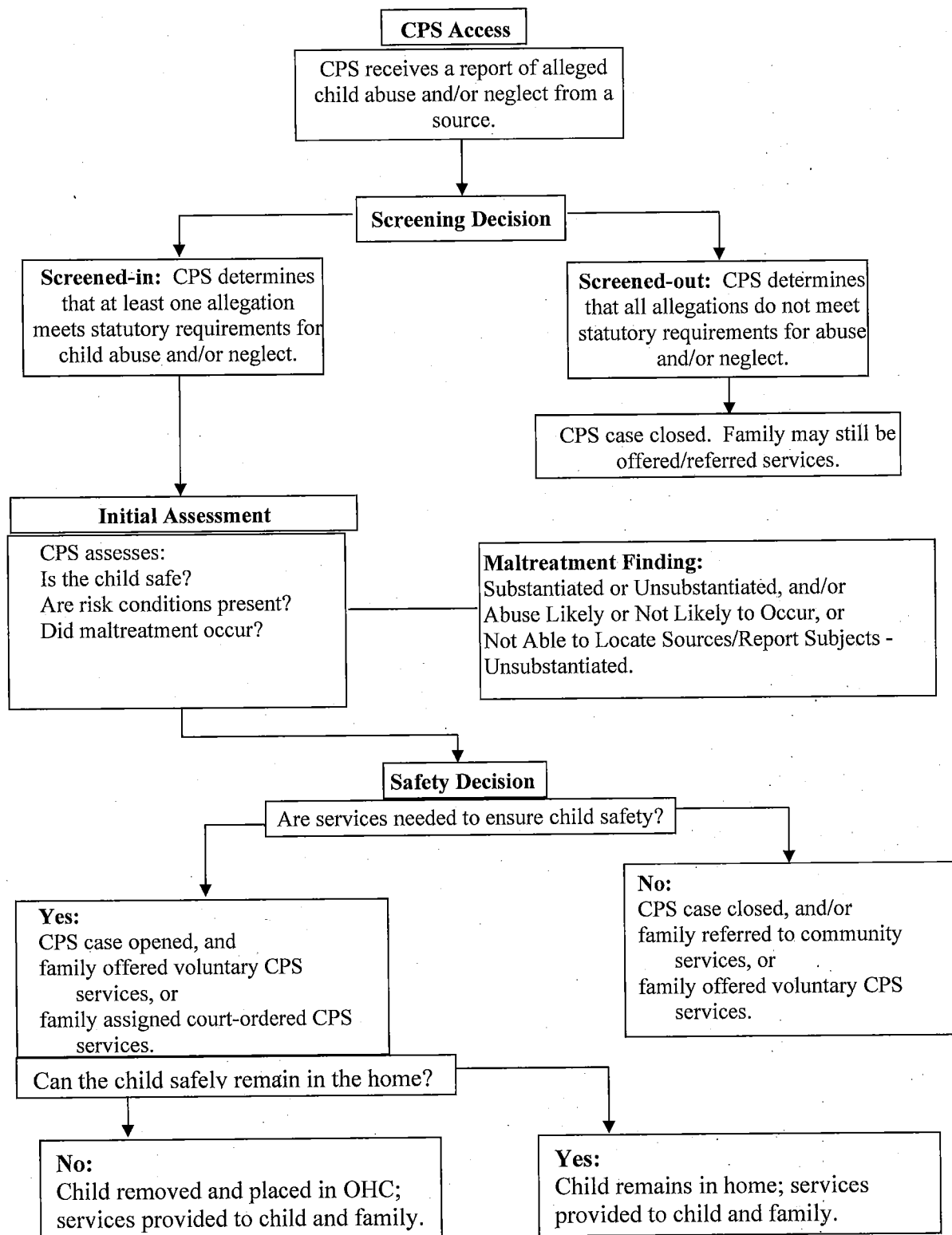
Unborn child abuse is defined as "serious physical harm inflicted on the unborn child, and the risk of serious physical harm to the child when born, caused by the habitual lack of self-control of the expectant mother of the unborn child in the use of alcohol beverages, controlled substances or controlled substance analogs, exhibited to a severe degree." [Ref. s. 48.02(1)(am), Stats.]

The maltreatment allegation of unborn child abuse is excluded from maltreatment allegation counts in the body of this report and presented here separately.

- In calendar year 2010, CPS agencies screened-in 343 allegations of unborn child abuse for further assessment.
- The most common reporters of screened-in unborn child abuse allegations were social service workers (21%), legal/law enforcement (12%), and medical professionals (13%).
- Forty-nine of the 343 screened-in allegations (14%) of unborn child abuse were substantiated after the CPS initial assessment.
- Of the CPS initial assessments which had a substantiated unborn child abuse allegation, 71% were opened or already opened for CPS services.
- Eight children were placed in out-of-home care after the child's birth as a part of the CPS initial assessment of unborn child abuse.

APPENDIX C

An Overview of the CPS Process for Traditional Response Cases



APPENDIX D

Data Collection and Interpretation

Data Collection Process

The child maltreatment data collected for calendar year 2010 is from the electronic Wisconsin Statewide Automated Child Welfare Information System (eWiSACWIS). eWiSACWIS allows case workers, supervisors and administrators to manage child welfare services and supports practice responsibilities related to CPS Access, initial assessment, case management, court process, out-of-home placements, and more. Compared with the previous child maltreatment data source, the CFS-40 form, use of the eWiSACWIS system greatly expands the type of data collected and also improves the timeliness and accuracy of child welfare data. The quality of the data in this report is dependent upon the accuracy and timeliness of data recorded by the local agencies.

The historical data in this report (prior to 2005) includes data from both eWiSACWIS and the CFS-40 forms. Previously, counties completed CFS-40 forms at the conclusion of CPS initial assessments and data from this form was manually entered into a child maltreatment database. CPS agencies began using eWiSACWIS in 2001 and statewide rollout of the system was completed in 2004. The implications of using the more robust eWiSACWIS data and the transition from CFS-40 data to eWiSACWIS data are discussed in the next section.

Data Interpretation

As with previous publications, data for the 2010 edition of the Wisconsin Child Abuse and Neglect Report includes some cases in which the alleged maltreatment occurred in a previous year but was reported and assessed in 2010.

The 2010 Wisconsin Child Abuse and Neglect Report is the fifth year in which data was taken entirely from the eWiSACWIS system. As counties have increased experience using the eWiSACWIS system, the 2010 data has become more stable and reliable. In graphs which depict historical trends, differences in counts between calendar years 2004 and 2005 can be seen. These differences coincide with the transition from the legacy CFS-40 data system to eWiSACWIS and may be attributable to varied data entry practices between and functions of the two systems. In 2005 and 2006, the eWiSACWIS system required entry of a new allegation for every maltreater alleged for each child. Therefore, if neglect was alleged for one child by both parents it counted as 2 neglect allegations. The legacy CFS-40 data system counted allegations once per maltreatment type per child (regardless of the number of maltreaters).

In September 2007, the eWiSACWIS system was modified to allow allegations to be counted once per maltreatment type per child while also separately maintaining data on maltreaters. The impact of these data entry practices are most readily seen in the neglect maltreatment type as these situations more often involve maltreatment by multiple individuals.

Changes in child welfare policy and practice have also impacted the use of the abuse likely to occur finding in calendar year 2007. At the beginning of calendar year 2007, the BMCW discontinued use of abuse likely to occur allegation type. Then, with the release of the new statewide Access and Initial Assessment Standards in September 2007, the abuse likely to occur allegation was removed as a maltreatment type for the entire state. The abuse likely to occur allegation type was discontinued because it lacked a definition that would allow

consistent usage and make it clearly distinguishable from the other maltreatment types. It was found that the abuse likely to occur allegation could be more appropriately categorized under one of the other maltreatment types to represent the risk of maltreatment, in most cases neglect. The 2008 data is the first calendar year with no abuse likely to occur data.

Mutual Sexual Activity

Mutual sexual activity by minors is excluded from all data tables and figures which depict calendar year 2005 - 2010 data. Mutual sexual activity by minors appears in counts in graphs which depict data prior to 2005. In 2010, there were 160 screened-in allegations of mutual sexual activity by minors.

APPENDIX E

Total Referrals and Screening Decisions by County, 2010

County	Total CPS Referrals	Screen-out CPS Referrals	Screen-out Percent	Screen-in CPS Referrals	Screen- in Percent	Screen- in Service Referrals	Screen-out Service Referrals
Adams	213	139	65%	74	35%	123	137
Ashland	139	101	73%	38	27%	148	126
Barron	716	586	82%	130	18%	147	216
Bayfield	122	52	43%	70	57%	128	83
Brown	3,310	2,342	71%	968	29%	274	78
Buffalo	101	55	54%	46	46%	66	57
Burnett	175	103	59%	72	41%	155	55
Calumet	524	389	74%	135	26%	8	2
Chippewa	574	411	72%	163	28%	170	41
Clark	358	235	66%	123	34%	181	69
Columbia	373	147	39%	226	61%	478	326
Crawford	105	45	43%	60	57%	118	69
Dane	4,257	2,846	67%	1,411	33%	1,272	713
Dodge	578	315	54%	263	46%	267	36
Door	136	46	34%	90	66%	134	27
Douglas	875	539	62%	336	38%	443	93
Dunn	400	321	80%	79	20%	292	5
Eau Claire	1,663	1,290	78%	373	22%	168	122
Florence	48	18	38%	30	63%	32	2
Fond Du Lac	1,218	656	54%	562	46%	537	205
Forest	115	86	75%	29	25%	110	110
Grant	411	219	53%	192	47%	440	60
Green	434	238	55%	196	45%	189	168
Green Lake	148	62	42%	86	58%	99	27
Iowa	263	150	57%	113	43%	92	9
Iron	32	14	44%	18	56%	28	8
Jackson	435	350	80%	85	20%	157	150
Jefferson	475	258	54%	217	46%	479	19
Juneau	164	71	43%	93	57%	258	85
Kenosha	1,316	477	36%	839	64%	702	543
Kewaunee	73	53	73%	20	27%	23	45
La Crosse	1,197	788	66%	409	34%	72	222
Lafayette	148	78	53%	70	47%	37	7
Langlade	358	185	52%	173	48%	250	142
Lincoln	277	169	61%	108	39%	280	36
Manitowoc	949	517	54%	432	46%	251	142
Marathon	1,246	784	63%	462	37%	751	54

County	Total CPS Referrals	Screen-out CPS Referrals	Screen-out Percent	Screen-in Referrals	Screen-in Percent	Screen-in Service Referrals	Screen-out Service Referrals
Marinette	395	282	71%	113	29%	123	256
Marquette	172	82	48%	90	52%	127	68
Menominee	135	62	46%	73	54%	163	45
Milwaukee	14,260	6,643	47%	7,617	53%	1,902	855
Monroe	487	296	61%	191	39%	308	7
Oconto	347	243	70%	104	30%	170	189
Oneida	301	51	17%	250	83%	414	83
Outagamie	2,778	1,525	55%	1,253	45%	98	242
Ozaukee	339	147	43%	192	57%	41	73
Pepin	21	9	43%	12	57%	38	19
Pierce	495	355	72%	140	28%	186	37
Polk	766	519	68%	247	32%	312	33
Portage	249	205	82%	44	18%	200	14
Price	110	69	63%	41	37%	192	2
Racine	2,766	1,830	66%	936	34%	1,558	129
Richland	86	38	44%	48	56%	100	144
Rock	2,607	965	37%	1,642	63%	1,734	586
Rusk	277	194	70%	83	30%	75	77
Saint Croix	725	446	62%	279	38%	444	67
Sauk	403	242	60%	161	40%	264	359
Sawyer	113	67	59%	46	41%	193	140
Shawano	224	80	36%	144	64%	353	263
Sheboygan	955	492	52%	463	48%	793	22
Taylor	190	136	72%	54	28%	71	11
Trempealeau	283	202	71%	81	29%	79	41
Vernon	198	89	45%	109	55%	207	27
Vilas	165	29	18%	136	82%	90	122
Walworth	921	685	74%	236	26%	523	29
Washburn	93	50	54%	43	46%	82	49
Washington	550	411	75%	139	25%	449	497
Waukesha	1,773	1,213	68%	560	32%	773	124
Waupaca	625	364	58%	261	42%	307	15
Waushara	371	226	61%	145	39%	108	7
Winnebago	2,412	1,338	55%	1,074	45%	1,289	74
Wood	1,245	749	60%	496	40%	115	30
State Total	61,763	35,469	57%	26,294	43%	23,240	9,025

Source: Data about service referrals was compiled using the eWISACWIS sm0201 Access Report. Service referrals represent contacts and decision made where CPS issues were not identified as part of the report. Decisions about documentation of service referrals are not governed by statute and are determined by local agency practice.

Special Needs Adoption (SNAP) had 1,358 screen-in service referrals for the year 2010.

APPENDIX F

CPS Reports Per 1,000 Children by County, 2010

County	2009 Child Population (Ages 0 - 17)	Number of CPS Reports	CPS Reports per 1,000 Population
Adams	3,389	106	31.3
Ashland	3,764	49	13.0
Barron	9,881	193	19.5
Bayfield	2,806	95	33.9
Brown	59,726	1,470	24.6
Buffalo	2,978	74	24.8
Burnett	3,020	132	43.7
Calumet	12,039	182	15.1
Chippewa	14,078	220	15.6
Clark	9,731	215	22.1
Columbia	12,461	292	23.4
Crawford	3,789	99	26.1
Dane	102,412	2,078	20.3
Dodge	18,868	352	18.7
Door	5,023	120	23.9
Douglas	9,237	508	55.0
Dunn	8,708	106	12.2
Eau Claire	20,526	573	27.9
Florence	767	53	69.1
Fond Du Lac	22,607	877	38.8
Forest	2,060	38	18.4
Grant	10,352	259	25.0
Green	8,625	331	38.4
Green Lake	4,147	121	29.2
Iowa	5,650	167	29.6
Iron	962	29	30.1
Jackson	4,375	140	32.0
Jefferson	18,566	336	18.1
Juneau	5,694	117	20.5
Kenosha	42,098	1,113	26.4
Kewaunee	4,635	31	6.7
La Crosse	23,781	583	24.5
Lafayette	3,845	122	31.7
Langlade	4,214	289	68.6
Lincoln	6,513	168	25.8
Manitowoc	17,834	648	36.3
Marathon	31,686	737	23.3
Marinette	8,433	172	20.4

County	2009 Child Population (Ages 0 - 17)	Number of CPS Reports	CPS Reports per 1,000 Population
Marquette	3,006	111	36.9
Menominee	1,515	111	73.3
Milwaukee	241,292	11,727	48.6
Monroe	11,407	254	22.3
Oconto	8,080	153	18.9
Oneida	6,492	308	47.4
Outagamie	43,368	1,940	44.7
Ozaukee	20,137	271	13.5
Pepin	1,642	14	8.5
Pierce	8,449	171	20.2
Polk	10,154	363	35.7
Portage	14,103	64	4.5
Price	2,727	63	23.1
Racine	49,688	1,404	28.3
Richland	3,987	61	15.3
Rock	39,195	2,688	68.6
Rusk	3,244	104	32.1
Saint Croix	21,576	441	20.4
Sauk	13,751	215	15.6
Sawyer	3,516	67	19.1
Shawano	9,449	197	20.8
Sheboygan	26,893	739	27.5
Taylor	4,503	73	16.2
Trempealeau	6,704	113	16.9
Vernon	7,650	161	21.0
Vilas	3,697	216	58.4
Walworth	22,823	335	14.7
Washburn	3,386	62	18.3
Washington	31,063	184	5.9
Waukesha	89,803	810	9.0
Waupaca	11,619	356	30.6
Waushara	4,916	265	53.9
Winnebago	34,552	1,717	49.7
Wood	16,583	753	45.4
State Total	1,310,250	39,706	30.3

Population Source: Easy Access to Juvenile Populations,
http://www.ojdp.gov/ojstatbb/ezapop/asp/comparison_selection.asp

NOTE: This report only includes screened-in CPS reports which had a supervisor approved CPS initial assessment as of July 16, 2010. Screened-in CPS reports are not included in this report if they did not have an approved initial assessment by that date.

APPENDIX G

County Substantiation Rates, 2010

County	Number of CPS Initial Assessments	Number of CPS Reports	Maltreatment Substantiation Count	Maltreatment Substantiation Rate
Adams	71	106	23	22%
Ashland	36	49	9	18%
Barron	126	193	29	15%
Bayfield	69	95	9	9%
Brown	946	1,470	197	13%
Buffalo	43	74	21	28%
Burnett	70	132	13	10%
Calumet	124	182	46	25%
Chippewa	154	220	60	27%
Clark	113	215	44	20%
Columbia	213	292	60	21%
Crawford	60	99	15	15%
Dane	1,322	2,078	309	15%
Dodge	263	352	51	14%
Door	90	120	16	13%
Douglas	325	508	71	14%
Dunn	79	106	35	33%
Eau Claire	373	573	44	8%
Florence	29	53	6	11%
Fond du Lac	538	877	127	14%
Forest	28	38	2	5%
Grant	180	259	40	15%
Green	189	331	37	11%
Green Lake	81	121	10	8%
Iowa	104	167	23	14%
Iron	18	29	6	21%
Jackson	82	140	62	44%
Jefferson	213	336	88	26%
Juneau	92	117	15	13%
Kenosha	826	1113	152	14%
Kewaunee	20	31	9	29%
La Crosse	372	583	61	10%
Lafayette	67	122	37	30%
Langlade	161	289	87	30%
Lincoln	106	168	9	5%
Manitowoc	411	648	108	17%

County	Number of CPS Initial Assessments	Number of CPS Reports	Maltreatment Substantiation Count	Maltreatment Substantiation Rate
Marathon	456	737	174	24%
Marinette	113	172	47	27%
Marquette	83	111	20	18%
Menominee	67	111	25	23%
Milwaukee	6,972	11,727	1,038	9%
Monroe	188	254	37	15%
Oconto	87	153	27	18%
Oneida	245	308	59	19%
Outagamie	1,106	1,940	234	12%
Ozaukee	187	271	14	5%
Pepin	12	14	1	7%
Pierce	135	171	11	6%
Polk	223	363	29	8%
Portage	43	64	9	14%
Price	40	63	10	16%
Racine	871	1,404	268	19%
Richland	44	61	9	15%
Rock	1,466	2,688	282	10%
Rusk	82	104	13	13%
Saint Croix	246	441	46	10%
Sauk	149	215	51	24%
Sawyer	45	67	8	12%
Shawano	140	197	38	19%
Sheboygan	450	739	82	11%
Taylor	54	73	23	32%
Trempealeau	80	113	8	7%
Vernon	100	161	15	9%
Vilas	120	216	50	23%
Walworth	222	335	114	34%
Washburn	42	62	23	37%
Washington	139	184	51	28%
Waukesha	548	810	190	23%
Waupaca	251	356	52	15%
Waushara	141	265	22	8%
Winnebago	962	1,717	198	12%
Wood	481	753	118	16%
State Total	24,584	39,706	5,327	13%

APPENDIX H

Child Victimization Rate by County, 2010

County	2009 Child Population (Ages 0 - 17)	Number of Child Victims	Child Victims per 1,000 Population
Adams	3,389	19	5.6
Ashland	3,764	9	2.4
Barron	9,881	27	2.7
Bayfield	2,806	9	3.2
Brown	59,726	184	3.1
Buffalo	2,978	16	5.4
Burnett	3,020	13	4.3
Calumet	12,039	35	2.9
Chippewa	14,078	54	3.8
Clark	9,731	36	3.7
Columbia	12,461	48	3.9
Crawford	3,789	15	4.0
Dane	102,412	281	2.7
Dodge	18,868	50	2.6
Door	5,023	14	2.8
Douglas	9,237	64	6.9
Dunn	8,708	35	4.0
Eau Claire	20,526	41	2.0
Florence	767	6	7.8
Fond Du Lac	22,607	121	5.4
Forest	2,060	2	1.0
Grant	10,352	38	3.7
Green	8,625	26	3.0
Green Lake	4,147	9	2.2
Iowa	5,650	22	3.9
Iron	962	6	6.2
Jackson	4,375	52	11.9
Jefferson	18,566	81	4.4
Juneau	5,694	13	2.3
Kenosha	42,098	136	3.2
Kewaunee	4,635	8	1.7
La Crosse	23,781	56	2.4
Lafayette	3,845	35	9.1
Langlade	4,214	77	18.3
Lincoln	6,513	9	1.4
Manitowoc	17,834	96	5.4
Marathon	31,686	165	5.2
Marinette	8,433	44	5.2
Marquette	3,006	18	6.0

County	2009 Child Population (Ages 0 - 17)	Number of Child Victims	Child Victims per 1,000 Population
Menominee	1,515	17	11.2
Milwaukee	241,292	952	3.9
Monroe	11,407	37	3.2
Oconto	8,080	26	3.2
Oneida	6,492	50	7.7
Outagamie	43,368	216	5.0
Ozaukee	20,137	14	0.7
Pepin	1,642	1	0.6
Pierce	8,449	11	1.3
Polk	10,154	28	2.8
Portage	14,103	8	0.6
Price	2,727	10	3.7
Racine	49,688	242	4.9
Richland	3,987	9	2.3
Rock	39,195	241	6.1
Rusk	3,244	10	3.1
Saint Croix	21,576	42	1.9
Sauk	13,751	43	3.1
Sawyer	3,516	7	2.0
Shawano	9,449	33	3.5
Sheboygan	26,893	76	2.8
Taylor	4,503	19	4.2
Trempealeau	6,704	8	1.2
Vernon	7,650	15	2.0
Vilas	3,697	44	11.9
Walworth	22,823	102	4.5
Washburn	3,386	22	6.5
Washington	31,063	50	1.6
Waukesha	89,803	177	2.0
Waupaca	11,619	47	4.0
Waushara	4,916	21	4.3
Winnebago	34,552	184	5.3
Wood	16,583	107	6.5
State Total	1,310,250	4,839	3.7

Population Source: Easy Access to Juvenile Populations,
http://www.ojdp.gov/ojstatbb/ezapop/asp/comparison_selection.asp

APPENDIX I

Total Maltreatment Allegations by Maltreatment Type and Maltreatment Finding by County, 2010

County	Total CPS Reports	Allegations By Type															
		Neglect				Emotional Damage				Physical Abuse				Sexual Abuse			
		S	U	N	Total	S	U	N	Total	S	U	N	Total	S	U	N	Total
Adams	106	13	23	1	37		1		1	4	31	3	38	6	43	1	50
Ashland	49		12	1	13		1		1		13	2	15	9	12		21
Barron	193	4	100		104				-	5	93		38	20	45		65
Bayfield	95	2	44		46		2	4	6	3	25		28	4	10	2	16
Brown	1,470	107	711	74	892		25	3	28	47	474	24	545	43	180	9	232
Buffalo	74	10	23		33	1	2		3	3	18		21	7	18		25
Burnett	132	8	76	3	87				-	2	40		42	3	13	1	17
Calumet	182	23	82		105		7		7	8	64		72	15	30		45
Chippewa	220	25	79		104		2		2	6	49		55	29	43	2	74
Clark	215	23	128	2	153	3	11		14	5	46		51	13	43		56
Columbia	292	34	103		137	1	20		21	13	124		137	12	72	1	85
Crawford	99	8	47	6	61				-	1	21		22	6	12		18
Dane	2,078	188	980	46	1,214	2	30		32	69	707	20	796	50	272	6	328
Dodge	352	19	132	4	155	1	2		3	14	121	3	138	17	72		89
Door	120	1	33		34		10		10	3	37		40	12	35	2	49
Douglas	508	51	336	6	393	1	4		5	8	105		113	11	60	1	72
Dunn	106	20	38		58		2		2	7	11		18	8	22		30
Eau Claire	573	23	260	10	293		20	2	22	8	128		136	13	97	1	111
Florence	53	1	30	1	32		1		1	2	11		13	3	7	2	12
Fond Du Lac	877	79	513	9	601	1	22	1	24	18	231	2	251	29	71	2	102
Forest	38	1	7		8		8		-	1	14		15		15		15
Grant	259	25	131	3	159				8	6	81		87	9	29	2	40
Green	331	29	178	4	211	1	21		22	3	104		107	4	41		45
Green Lake	121	1	47	2	50				-	4	49		53	5	28		33
Iowa	167	16	83	2	101		11		11	4	60	1	65	3	14	1	18
Iron	29		16		16				-	5	9		14	1	1	1	3
Jackson	140	41	52		93	6	11		17	3	23		26	12	18		30
Jefferson	336	45	147	1	193	2	2		4	15	84		99	26	44	4	74
Juneau	117	6	37		43		3	1	4	4	49		53	5	21		26
Kenosha	1,113	68	337	12	417		1		1	55	553	2	610	29	137	3	169
Kewaunee	31	6	10		16				-	3	6		9		7		7
La Crosse	583	27	253	12	292		5		5	11	112	7	130	23	86	11	120
Lafayette	122	29	55	1	85		5		5	6	26		32	2	7		9
Langlade	289	81	145	5	231		9		9	5	42		47	1	32		33
Lincoln	168	8	104	1	113		1		1	1	41		42		19		19
Manitowoc	648	67	367	3	437		17		17	9	164	2	175	32	63	2	97
Marathon	737	100	257	10	367	1	5		6	26	150		176	47	60	1	108
Marinette	172	32	82	7	121		13		13	5	51	1	57	10	18	3	31

Allegations By Type																	
County	Total CPS Reports	Neglect				Emotional Damage				Physical Abuse				Sexual Abuse			
		S	U	N	Total	S	U	N	Total	S	U	N	Total	S	U	N	Total
Marquette	111	11	45		56	1	4		5	4	29		33	4	23		27
Menominee	111	18	61	6	85				-	4	32	1	37	3	8		11
Milwaukee	11,727	441	6,783	327	7,501	1	174	2	177	294	3,641	99	4,034	302	1,070	45	1,417
Monroe	254	19	134		153		4		4	9	66		75	9	21	3	33
Oconto	153	7	61		68	3	4		7	16	52		68	1	14	1	16
Oneida	308	34	127	11	172	4			4	9	68		77	12	66	6	84
Outagamie	1,940	137	1,118	17	1,272		35	1	36	33	579	6	618	64	180	3	247
Ozaukee	271	7	150	3	160		30	2	32	3	84		87	4	22	1	27
Pepin	14	1	3		4		1		1		8		8		1		1
Pierce	171	6	70	1	77		3		3	2	50		52	3	22		25
Polk	363	4	167	10	181	2	51	4	57	5	84	2	91	18	62	3	83
Portage	64	2	41	1	44		2		2	2	13		15	5	12		17
Price	63	4	36		40	1	5		6	1	15		16	4	10		14
Racine	1,404	163	527	61	751				-	49	445	25	519	56	201	13	270
Richland	61	2	16	3	21				-	2	17		19	5	17		22
Rock	2,688	167	1,579	56	1,802		19		19	47	788	18	853	68	393	10	471
Rusk	104	5	44		49	2		1	3	2	33	1	36	4	21	2	27
Saint Croix	441	24	257	3	284		6		6	9	104		113	13	59		72
Sauk	215	29	89	4	122		3		3	11	66	5	82	11	40	4	55
Sawyer	67	3	34	6	43		6		6	4	12		16	1	16		17
Shawano	197	18	84		102	2	5		7	5	64		69	13	31		44
Sheboygan	739	42	463	2	507	2	67		69	13	164	3	180	25	69	1	95
Taylor	73	11	25		36	3	5		8	1	30		31	8	10	1	19
Trempealeau	113	5	50	11	66		8		8	1	35		36	2	15		17
Vernon	161	8	91	1	100		14		14	1	53		54	6	17		23
Vilas	216	33	129	1	163		2		2	6	51	1	58	11	22	2	35
Walworth	335	65	114	5	184	1	5		6	20	97		117	28	45		73
Washburn	62	16	16	1	33				-	1	14	1	16	6	11		17
Washington	184	29	38	3	70		3		3	8	58	1	67	14	41	1	56
Waukesha	810	87	357	7	451	2	16		18	20	196	4	220	81	113	2	196
Waupaca	356	23	169		192	1	17		18	15	104		119	13	67		80
Waushara	265	13	220	3	236		7		7		87	1	88	9	39		48
Winnebago	1,717	114	1,070	24	1,208		4		4	29	377	4	410	55	181	6	242
Wood	753	77	377	10	464		3		3	18	237	4	259	23	110	2	135
State Total	39,706	2,846	20,553	803	24,202	45	777	21	843	1,036	11,660	243	12,939	1,400	4,826	164	6,390

The sum of the totals of each type of allegation may exceed the total number of reports because there may be more than one allegation per report. The totals for sexual abuse exclude cases of mutual sexual activity.

NOTE: Alternative response assessment determinations were not included in these counts.

APPENDIX J

**County Maltreatment Allegation Substantiation Rate By
Maltreatment Type, 2010**

County	Neglect Substantiation Percent	Physical Abuse Substantiation Percent	Sexual Abuse Substantiation Percent	Emotional Abuse Substantiation Percent
Adams	35%	11%	12%	0%
Ashland	0%	0%	43%	0%
Barron	4%	13%	31%	-
Bayfield	4%	11%	25%	0%
Brown	12%	9%	19%	0%
Buffalo	30%	14%	28%	33%
Burnett	9%	5%	18%	-
Calumet	22%	11%	33%	0%
Chippewa	24%	11%	39%	0%
Clark	15%	10%	23%	21%
Columbia	25%	9%	14%	5%
Crawford	13%	5%	33%	-
Dane	15%	9%	15%	6%
Dodge	12%	10%	19%	33%
Door	3%	8%	24%	0%
Douglas	13%	7%	15%	20%
Dunn	34%	39%	27%	0%
Eau Claire	8%	6%	12%	0%
Florence	3%	15%	25%	0%
Fond du Lac	13%	7%	28%	4%
Forest	13%	7%	0%	-
Grant	16%	7%	23%	0%
Green	14%	3%	9%	5%
Green Lake	2%	8%	15%	-
Iowa	16%	6%	17%	0%
Iron	0%	36%	33%	-
Jackson	44%	12%	40%	35%
Jefferson	23%	15%	35%	50%
Juneau	14%	8%	19%	0%
Kenosha	16%	9%	17%	0%
Kewaunee	38%	33%	0%	-
La Crosse	9%	8%	19%	0%
Lafayette	34%	19%	22%	0%
Langlade	35%	11%	3%	0%
Lincoln	7%	2%	0%	0%
Manitowoc	15%	5%	33%	0%
Marathon	27%	15%	44%	17%

County	Neglect Substantiation Percent	Physical Abuse Substantiation Percent	Sexual Abuse Substantiation Percent	Emotional Abuse Substantiation Percent
Marinette	26%	9%	32%	0%
Marquette	20%	12%	15%	20%
Menominee	21%	11%	27%	1%
Milwaukee	6%	7%	21%	1%
Monroe	12%	12%	27%	0%
Oconto	10%	24%	6%	43%
Oneida	20%	12%	14%	100%
Outagamie	11%	5%	26%	0%
Ozaukee	4%	3%	15%	0%
Pepin	25%	0%	0%	0%
Pierce	8%	4%	12%	0%
Polk	2%	5%	22%	4%
Portage	5%	13%	29%	0%
Price	10%	6%	29%	17%
Racine	22%	9%	21%	-
Richland	10%	11%	23%	0%
Rock	9%	6%	14%	0%
Rusk	10%	6%	15%	67%
Saint Croix	8%	8%	18%	0%
Sauk	24%	13%	20%	0%
Sawyer	7%	25%	6%	0%
Shawano	18%	7%	30%	29%
Sheboygan	8%	7%	26%	3%
Taylor	31%	3%	42%	38%
Trempealeau	8%	3%	12%	0%
Vernon	8%	2%	26%	0%
Vilas	20%	10%	31%	0%
Walworth	35%	17%	38%	17%
Washburn	48%	6%	35%	0%
Washington	41%	12%	25%	0%
Waukesha	19%	9%	41%	11%
Waupaca	12%	13%	16%	6%
Waushara	6%	0%	19%	0%
Winnebago	9%	7%	23%	0%
Wood	17%	7%	17%	0%
State Total	12%	8%	22%	5%

NOTE: Refer to Appendix I for counts of maltreatment allegations.

APPENDIX K

Percentage of CPS Initial Assessments (IA's) by Type by County, 2010

County	Total CPS Initial Assessments	Primary Caregiver CPS Initial Assessments	Primary Percent	Secondary & Non-Caregiver CPS Initial Assessments	Secondary & Non-Caregiver Percent
Adams	71	65	92%	6	8%
Ashland	36	28	78%	8	22%
Barron	126	107	85%	19	15%
Bayfield	69	63	91%	6	9%
Brown	946	884	93%	62	7%
Buffalo	43	36	84%	7	16%
Burnett	70	67	96%	3	4%
Calumet	124	124	100%	-	0%
Chippewa	154	131	85%	23	15%
Clark	113	102	90%	11	10%
Columbia	213	183	86%	30	14%
Crawford	60	47	78%	13	22%
Dane	1,322	1,239	94%	83	6%
Dodge	263	243	92%	20	8%
Door	90	54	60%	36	40%
Douglas	325	298	92%	27	8%
Dunn	79	72	91%	7	9%
Eau Claire	373	344	92%	29	8%
Florence	29	27	93%	2	7%
Fond du Lac	538	538	100%	-	0%
Forest	28	23	82%	5	18%
Grant	180	171	95%	9	5%
Green	189	187	99%	2	1%
Green Lake	81	67	83%	14	17%
Iowa	104	99	95%	5	5%
Iron	18	14	78%	4	22%
Jackson	82	73	89%	9	11%
Jefferson	213	197	92%	16	8%
Juneau	92	84	91%	8	9%
Kenosha	826	775	94%	51	6%
Kewaunee	20	20	100%	-	0%
La Crosse	372	332	89%	40	11%
Lafayette	67	60	90%	7	10%
Langlade	161	144	89%	17	11%
Lincoln	106	97	92%	9	8%
Manitowoc	411	380	92%	31	8%
Marathon	456	412	90%	44	10%

County	Total CPS Initial Assessments	Primary Caregiver CPS Initial Assessments	Primary Percent	Secondary & Non-Caregiver CPS Initial Assessments	Secondary & Non-Caregiver Percent
Marinette	113	105	93%	8	7%
Marquette	83	76	92%	7	8%
Menominee	67	65	97%	2	3%
Milwaukee	6,972	6,461	93%	511	7%
Monroe	188	179	95%	9	5%
Oconto	87	85	98%	2	2%
Oneida	245	182	74%	63	26%
Outagamie	1,106	991	90%	115	10%
Ozaukee	187	182	97%	5	3%
Pepin	12	12	100%	-	0%
Pierce	135	122	90%	13	10%
Polk	223	197	88%	26	12%
Portage	43	35	81%	8	19%
Price	40	32	80%	8	20%
Racine	871	789	91%	82	9%
Richland	44	37	84%	7	16%
Rock	1,466	1,363	93%	103	7%
Rusk	82	73	89%	9	11%
Saint Croix	246	238	97%	8	3%
Sauk	149	140	94%	9	6%
Sawyer	45	37	82%	8	18%
Shawano	140	112	80%	28	20%
Sheboygan	450	420	93%	30	7%
Taylor	54	52	96%	2	4%
Trempealeau	80	78	98%	2	3%
Vernon	100	91	91%	9	9%
Vilas	120	96	80%	24	20%
Walworth	222	199	90%	23	10%
Washburn	42	39	93%	3	7%
Washington	139	116	83%	23	17%
Waukesha	548	451	82%	97	18%
Waupaca	251	229	91%	22	9%
Waushara	141	131	93%	10	7%
Winnebago	962	887	92%	75	8%
Wood	481	451	94%	30	6%
State Total	24,584	22,540	92%	2,044	8%

NOTE: Initial assessment (IA) primary caregiver includes the following types: IA Primary, IA Narrative and IA Primary – Alternative Response (AR).

APPENDIX L

**Safety Assessment Results in Primary Caregiver CPS Initial Assessments (IA's)
by County, 2010**

County	Primary Caregiver CPS Initial Assessments	Number of Safety Decisions as Safe	Number of Safety Decisions as Unsafe	Percent of Unsafe
Adams	65	55	10	15%
Ashland	28	27	1	4%
Barron	107	96	11	10%
Bayfield	63	58	5	8%
Brown	884	814	70	8%
Buffalo	36	31	5	14%
Burnett	67	67	-	0%
Calumet	124	110	14	11%
Chippewa	131	110	21	16%
Clark	102	97	5	5%
Columbia	183	157	26	14%
Crawford	47	45	2	4%
Dane	1,239	1,148	91	7%
Dodge	243	228	15	6%
Door	54	50	4	7%
Douglas	298	272	26	9%
Dunn	72	63	9	13%
Eau Claire	344	319	25	7%
Florence	27	22	5	19%
Fond du Lac	538	446	74	14%
Forest	23	23	-	0%
Grant	171	157	14	8%
Green	187	174	13	7%
Green Lake	67	61	6	9%
Iowa	99	91	8	8%
Iron	14	11	3	21%
Jackson	73	57	16	22%
Jefferson	197	171	26	13%
Juneau	84	70	14	17%
Kenosha	775	688	56	7%
Kewaunee	20	16	4	20%
La Crosse	332	281	51	15%
Lafayette	60	40	20	33%
Langlade	144	114	30	21%
Lincoln	97	91	6	6%
Manitowoc	380	354	26	7%
Marathon	412	365	47	11%
Marinette	105	96	9	9%

County	Primary Caregiver CPS Initial Assessments	Number of Safety Decisions as Safe	Number of Safety Decisions as Unsafe	Percent of Unsafe
Marquette	76	69	7	9%
Menominee	65	57	8	12%
Milwaukee	6,461	5,364	1,097	17%
Monroe	179	168	11	6%
Oconto	85	71	14	16%
Oneida	182	164	18	10%
Outagamie	991	933	58	6%
Ozaukee	182	163	19	10%
Pepin	12	12	-	0%
Pierce	122	115	7	6%
Polk	197	172	25	13%
Portage	35	30	5	14%
Price	32	27	5	16%
Racine	789	627	88	11%
Richland	37	33	4	11%
Rock	1,363	1,294	69	5%
Rusk	73	62	11	15%
Saint Croix	238	231	7	3%
Sauk	140	124	16	11%
Sawyer	37	36	1	3%
Shawano	112	104	8	7%
Sheboygan	420	387	33	8%
Taylor	52	44	8	15%
Trempealeau	78	76	2	3%
Vernon	91	81	10	11%
Vilas	96	77	19	20%
Walworth	199	168	31	16%
Washburn	39	31	8	21%
Washington	116	94	22	19%
Waukesha	451	408	41	9%
Waupaca	229	200	29	13%
Waushara	131	122	9	7%
Winnebago	887	805	82	9%
Wood	451	400	51	11%
State Total	22,540	19,824	2,591	11%

NOTE: 125 primary caregiver CPS initial assessment safety decisions were blank. Initial assessment (IA) primary caregiver includes the following types: IA Primary, IA Narrative and IA Primary – Alternative Response (AR).

APPENDIX M

Where to Report

Listed below are the County Departments of Health and Human Services or Social Services that receive and assess child maltreatment reports. Such reports may also be made to law enforcement agencies.

Adams County Department of Health
& Social Services
108 E. North Street
P.O. Box 500
Friendship WI 53934-0500
Office Hours: 608-339-3356
After Hours: 608-339-3304

Ashland County Department of
Human Services
301 Ellis Ave.
Ashland WI 54806
Office Hours: 715-682-7004
After Hours: 715-682-7023

Barron County Department of Health
& Human Services
330 East LaSalle Ave., Rm. 338
Barron WI 54812
Office Hours: 715-537-5691
After Hours: 715-537-3106

Bayfield County Department of
Human Services
P.O. Box 100
Washburn WI 54891-0100
Office Hours: 715-373-6144
After Hours: 715-373-6120

Brown County Department of Human
Services
111 N. Jefferson Street
P.O. Box 22188
Green Bay WI 54305-2188
Office Hours: 920-448-6035
After Hours: 920-448-3200

Buffalo County Department of Health
& Human Services
407 S. Second St.
P.O. Box 517
Alma WI 54610-0517
Office Hours: 608-685-4412
After Hours: 608-685-4433

Burnett County Department of Health
& Human Services
County Government Center
7410 County Road K #280
Siren WI 54872
Office Hours: 715-349-7600 or 715-
349-2131 After Hours: 715-349-2121

Calumet County Department of
Human Services
206 Court Street
Chilton WI 53014
Office Hours: 920-849-1400
After Hours: 920-832-4646

Chippewa County Department of
Human Services
711 N. Bridge Street, Room 306
Chippewa Falls WI 54729
Office Hours: 715-726-7799
After Hours: 715-726-7830

Clark County Department of Social
Services
517 Court Street, P.O. Box 190
Neillsville WI 54456
Office Hours: 715-743-5233
After Hours: 715-743-3157

Columbia County Department of
Health & Human Services
P.O. Box 136
Portage WI 53901
Office Hours: 608-742-9227
After Hours: 608-742-7227

Crawford County Department of
Human Services
111 W. Dunn Street
Prairie du Chien WI 53821
Office Hours: 608-326-0248
After Hours: 608-326-0241

Dane County Department of Human
Services
Children, Youth & Family Intake
2322 S. Park Street
Madison WI 53713
Office Hours: 608-261-5437
After Hours: 608-255-6067

Dodge County Department of Human
Services
County Office Building
143 E. Center Street
Juneau WI 53039-1330
Office Hours: 920-386-3750
After Hours: 920-887-6713

Door County Department of Social
Services
421 Nebraska Street, P.O. Box 670
Sturgeon Bay WI 54235
Office Hours: 920-746-2300
After Hours: 920-746-2400

Douglas County Department of Health
& Human Services
1313 Belknap Street, Room 207
Superior WI 54880
Office Hours: 715-395-1304
After Hours: 715-395-1371

Dunn County Department of Human
Services
808 Main Street, P.O. Box 470
Menomonie WI 54751
Office Hours: 715-232-1116
After Hours: 715-232-5987

Eau Claire County Department of
Human Services
721 Oxford Ave., P.O. Box 840
Eau Claire WI 54702-840
Office Hours: 715-831-5700
After Hours: 715-839-4972

Florence County Department of
Human Services
501 Lake Ave., P.O. Box 170
Florence WI 54121
Office Hours: 715-528-3296
After Hours: 715-528-3346

Fond du Lac County Department of
Social Services
87 Vincent Street P.O. Box 1196
Fond du Lac WI 54936-1196
Office Hours: 920-929-3400
After Hours: 920-929-3391

Forest County Department of Social
Services
Forest County Courthouse
200 E. Madison St.
Crandon WI 54520
Office Hours: 715-478-3351
After Hours: 715-478-3331

Grant County Department of Social
Services
8820 Hwy. 35 & 61 South
P.O. Box 447
Lancaster WI 53813
Office Hours: 608-723-2136
After Hours: 608-723-2157

Green County Department of Human
Services
N3152 Highway 81, Pleasant View
Complex
Monroe WI 53566
Office Hours: 608-328-9399 or 608-
328-9393
After Hours: 608-328-9393

Green Lake County Department of
Health & Human Services
500 Lake Steel Street
Green Lake WI 54941
Office Hours: 920-294-4070
After Hours: 920-294-4000

Iowa County Department of Social
Services
109 W. Fountain St.
Dodgeville WI 53533
Office Hours: 608-935-9311
After Hours: 608-935-3314

Iron County Department of Human
Services
Courthouse
300 Taconite Street
Hurley WI 54534
Office Hours: 715-561-3636 or 715-
561-3637 or 715-561-4168
After Hours: 715-561-3800

Jackson County Department of Health
and Human Services
420 Highway 54 West
P.O. Box 457
Black River Falls WI 54615
Office Hours: 715-284-4301
After Hours: 715-284-5357

Jefferson County Human Services
Department
N3995 Annex Road
Jefferson WI 53549
Office/After Hours: 920-674-3105

Juneau County Department of Human
Services
Courthouse Annex
220 E. LaCrosse St.
Mauston WI 53948
Office Hours: 608-847-2400
After Hours: 608-847-6161

Kenosha County Department of
Human Services
8600 Sheridan Road, Suite 200
Kenosha WI 53140
Office Hours: 262-605-6582
After Hours: 262-657-7188

Kewaunee County Department of
Human Services
510 Kilbourn Street
Kewaunee WI 54216
Office Hours: 920-388-3777
After Hours: 920-388-3100

LaCrosse County Human Services
Department
300 North 4th Street, P.O. Box 4002
LaCrosse WI 54602
Office Hours: 608-785-6050 or 785-
6054
After Hours: 608-785-9634

Lafayette County Department of
Human Services
627 Main Street
Darlington WI 53530
Office Hours: 608-776-4800
After Hours: 608-776-4848

Langlade County Department of
Social Services
Langlade County Health Service
Center
1225 Langlade Road
Antigo WI 54409
Office Hours: 715-627-6500
After Hours: 715-623-4111

Lincoln County Department of Social
Services
607 N. Sales St.
P.O. Box 547
Merrill WI 54452
Office Hours: 715-536-6200
After Hours: 715-536-6272

Manitowoc County Human Services
Department
926 South 8th Street
P.O. Box 1177
Manitowoc WI 54220
Office Hours: 920-683-4230
After Hours: 920-323-2448

Marathon County Department of
Social Services
400 E. Thomas Street
Wausau WI 54403
Office Hours: 715-261-7500
After Hours: 715-261-1200

Marinette County Department of
Health & Human Services
2500 Hall Avenue, Suite B
Marinette WI 54143
Office Hours: 715-732-7700
After Hours: 715-732-7600

Marquette County Department of
Human Services
428 Underwood Avenue
P.O. Box 405
Montello WI 53949
Office Hours: 608-297-9135
After Hours: 608-297-2115

Menominee County Department of
Human Services
Social Services Building, Hwy 47
P.O. Box 280
Keshena WI 54135
Office Hours: 715-799-3861 or 715-
799-5353
After Hours: 715-799-3861

Bureau of Milwaukee Child Welfare
1555 Rivercenter Drive
Suite 220
Milwaukee WI 53212
Office Hours: 414-220-SAFE (7233)
After Hours: 414-220-SAFE (7233)

Monroe County Department of Human
Services
Community Services Center A-19
14301 County Highway B
Sparta WI 54656
Office Hours: 608-269-8630
After Hours: 911

Oconto County Department of Human
Services
501 Park Ave.
Oconto WI 54153-1612
Office Hours: 920-834-7000
After Hours: 920-834-6900

Oneida County Department of Social
Services
P.O. Box 400-Courthouse
Rhinelander WI 54501
Office Hours: 715-362-5695
After Hours: 715-361-5100

Outagamie County Department of
Health and Human Services
401 South Elm Street
Appleton, WI 54911
Office Hours: 920-832-5161
After Hours: 920-832-4646

Ozaukee County Department of
Social Services
121 W. Main Street
P.O. Box 994
Port Washington WI 53074-0994
Office Hours: 262-284-8200
After Hours: 262-238-8436

Pepin County Department of Human
Services
740 7th Ave. West
Durand WI 54736
Office Hours: 715-672-8941
After Hours: 715-672-5944

Pierce County Department of Health &
Human Services
412 W. Kinne St.
P.O. Box 670
Ellsworth WI 54011
Office Hours: 715-273-6766
After Hours: 715-273-5051

Polk County Department of Human
Services
300 Polk County Plaza, Suite 110
Balsam Lake WI 54810-0219
Office Hours: 715-485-8400
After Hours: 715-485-8300

Portage County Department of Health
& Human Services
817 Whiting Avenue
Stevens Point WI 54481
Office Hours: 715-345-5350
After Hours: 715-345-5350

Price County Human Services
Department
104 South Eyder Avenue
P.O. Box 88
Phillips WI 54555
Office Hours: 715-339-2158
After Hours: 715-339-3011

Racine County Human Services
Department
1717 Taylor
Racine WI 53403
Office Hours/After Hours: 262-638-
6321

Richland County Department of
Health & Human Services
221 West Seminary
Richland Center WI 53581
Office Hours: 608-647-8821
After Hours: 608-647-2106

Rock County Human Services
Department
3530 N. County Trunk F
P.O. Box 1649
Janesville WI 53547-1649
Office Hours: 608-757-5401
After Hours: 608-757-2244

Rusk County Department of Health &
Human Services
Courthouse
311 East Miner Suite C-240
Ladysmith WI 54848
Office Hours: 715-532-2299
After Hours: 715-532-2299

Sauk County Department of Human
Services
505 Broadway, 4th Floor
P.O. Box 29
Baraboo WI 53913
Office Hours: 608-355-4200
After Hours: 1-800-533-5692

Sawyer County Department of Health
& Human Services
105 E. 4th Street, P.O. Box 730
Hayward WI 54843
Office Hours: 715-634-4806
After Hours: 715-634-4858

Shawano County Department of
Social Services
P.O. Box 434
Shawano WI 54166
Office Hours: 715-526-4700
After Hours: 715-526-3100

Sheboygan County Health & Human
Services Department
1011 North 8th Street
Sheboygan WI 53081
Office Hours: 920-459-6418
After Hours: 414-459-3111

St. Croix County Department of
Health & Human Services
1445 North 4th Street
New Richmond WI 54017
Office Hours: 715-246-6991
After Hours: 715-246-6991

Taylor County Human Services
Department
340 East College Street
Medford WI 54451
Office Hours: 715-748-3332
After Hours: 715-748-2200

Trempealeau County Department of
Social Services
Courthouse, P.O. Box 67
Whitehall WI 54773
Office Hours: 715-538-2311 ext. 290
After Hours: 715-538-4351

Vernon County Department of Human Services
E 7419 County Home Road, P.O. Box 823
Viroqua WI 54665
Office Hours: 608-637-5210
After Hours: 608-637-2124

Vilas County Department of Social Services
330 Court Street
Eagle River WI 54521
Office Hours: 715-479-3668
After Hours: 715-479-4441

Walworth County Department of Health & Human Services
W3955 Hwy NN, Box 1005
Elkhorn WI 53121
Office Hours: 262-741-3200/1-800-365-1587
After Hours: 262-741-3200/1-800-365-1587

Washburn County Department of Health & Human Services
P.O. Box 250
Shell Lake WI 54871
Office Hours: 715-468-4747
After Hours: 715-468-2721

Washington County Department of Social Services
333 E. Washington St.
Suite 3100
West Bend WI 53095
Office Hours: 262-335-4610
After Hours: 262-335-4670

Waukesha County Department of Health & Human Services
500 Riverview Ave.
Waukesha WI 53188
Office Hours: 262-548-7212/548-7666
After Hours: 262-547-7731

Waupaca County Department of Health & Human Services
811 Harding Street
Waupaca WI 54981-2087
Office Hours: 715-258-6300
After Hours: 715-258-4466

Waushara County Department of Social Services
P.O. Box 1230
Wautoma WI 54982-1230
Office Hours: 920-787-3303
After Hours: 920-787-3321

Winnebago County Department of Human Services
220 Washington Avenue
P.O. Box 2925
Oshkosh WI 54903-2925
Office Hours: 920-236-4600
After Hours: 920-233-7707

Wood County Department of Social Services
(South Wood County Office)
Courthouse, 400 Market Street
P.O. Box 8095
Wisconsin Rapids WI 54495-8095
Office Hours: 715-421-8600
After Hours: 715-421-8600

DCF is an equal opportunity employer and service provider. If you have a disability and need to access this information in an alternate format, or need it translated to another language, please contact (608) 266-8787. For civil rights questions call (608) 266-5335 or (866) 864-4585 TTY (Toll Free).

DCF-P-PFS2013R (N. 12/2010)