

Mobile Response and Stabilization Services (MRSS) Recordings & Resources

Innovations Institute's Learning Management System (LMS) Courses

Innovations LMS has several free online courses on Mobile Response and Stabilization Services (MRSS). Each course is described below with a link to an enrollment key to access the content. For assistance in enrolling in Innovations LMS, see Attachment A.



Module 1 of the Innovations Institute's MRSS Online Training Series is available to the public by clicking on this [enrollment key](#).

This five-part live webinar series, *Designing with Youth: Strategies for Building Crisis Response Systems*, presented by Youth MOVE National and Innovations Institute, focuses on meaningful collaboration with youth and young adults in designing, staffing, and utilizing mobile response and stabilization services. The course can be accessed by clicking on this [enrollment key](#). Enrolling will give you access to the recordings for past meetings and register you for upcoming live webinars (2-3:30 ET – see dates below).

- Engagement & Partnership Part 1 - March 30, 2023
- Engagement & Partnership Part 2 - April 27, 2023
- Peer Support & Supervision - May 25, 2023
- Trauma-Informed Practices - June 29, 2023
- Assessing Youth Engagement (YVAL) - July 27, 2023



The Mobile Response and Stabilization Services Learning Community curriculum, presented by Innovations Institute and the National Association of State Mental Health Program Directors (NASMHPD) can be accessed by clicking on this [enrollment key](#). The lessons included in this course include:

- Someone to Contact
- Someone to Respond
- A System to Support
- Leadership in Transformation: Creating Conditions Necessary for Systems Transformation
- Planning for Sustainability: Data & Quality Metrics
- Financing Strategies for MRSS
- Systems & Community Engagement
- MRSS Workforce Development: Recruitment, Training, Coaching & Certification
- Addressing Geographic Challenges in Implementing MRSS
- Behavioral Health Consultation
- Connecting through Technology
- Ensuring Your Success

Mobile Response and Stabilization Services Learning Community



Innovations Institute's FREE, interactive online course *Building Systems of Care* is now available with Continuing Education Credits (CECs). The interactive online course places systems of care (SOC) within the context of health systems reform, with attention to the integration of SOC practices within Medicaid redesign efforts and child welfare reforms. The seventeen online modules provide comprehensive training on SOC principles, policies, practices, and system design approaches and highlight the importance of practices that promote health equity, featuring current state and local examples. The course can be accessed by clicking on this [enrollment key](#).

Module 9, titled The Importance of Mobile Response and Stabilization Services, includes the below lessons:

- Lesson 1: MRSS Design
- Lesson 2: Design and Intent of MRSS
- Lesson 3: Newer Generation Model vs Previous Model Differences
- Lesson 4: Upstream Intervention
- Lesson 5: What "Crisis" Means to Families
- Lesson 6: Boarding
- Lesson 7: MRSS Elements and Components
- Lesson 8: Common Elements of MRSS Programs

- Lesson 9: Next Generation Examples
- Lesson 10: Primary MRSS Components
- Lesson 11: Characteristics of MRSS Core Components
- Lesson 12: System Coordination and Community Collaboration
- Lesson 13: Finance and Program Support
- Lesson 14: Federal Guidance
- Lesson 15: Financing MRSS
- Lesson 16: Funding MRSS Programs
- Lesson 17: MRSS Strategies
- Lesson 18: MRSS Common Adaptions
- Lesson 19: System View of New Jersey's Children's System of Care
- Lesson 20: New Jersey Success
- Lesson 21: New Jersey MRSS Impact
- Lesson 22: New Jersey, Wisconsin, and Connecticut Success
- Lesson 23: Connecticut Return on Investment

Public Resources from the National MRSS Quality Learning Collaborative

Innovations Institute, in partnership with the Child Health and Development Institute (CHDI), Social Current, NASMHPD operate the National MRSS Quality Learning Collaborative (QLC) for contracting states. The below MRSS QLC resources are available to the public.

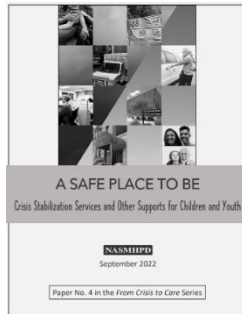


[MRSS QLC Stakeholder Webinars](#)

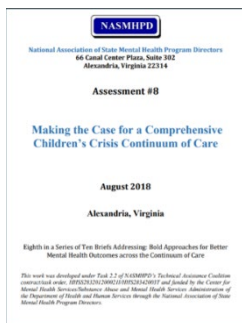


National MRSS Quality Learning Collaborative's [Mobile Response and Stabilization Services \(MRSS\) National Best Practices](#)

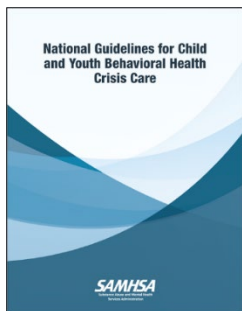
Additional MRSS Resources



[A Safe Place to Be: Crisis Stabilization Services and Other Supports for Children and Youth \(nasmhpd.org\)](https://nasmhpd.org) authored by Innovations Institute in 2022 for NASMHPD's Technical Assistance Coalition funded by SAMHSA



[Making the Case for a Comprehensive Children's Crisis Continuum of Care \(nasmhpd.org\)](https://nasmhpd.org) authored by Innovations Institute in 2018 for NASMHPD's Technical Assistance Coalition funded by SAMHSA



SAMHSA's [National Guidelines for Child and Youth Behavioral Health Crisis Care](https://www.samhsa.gov/child-youth-behavioral-health-crisis-care)

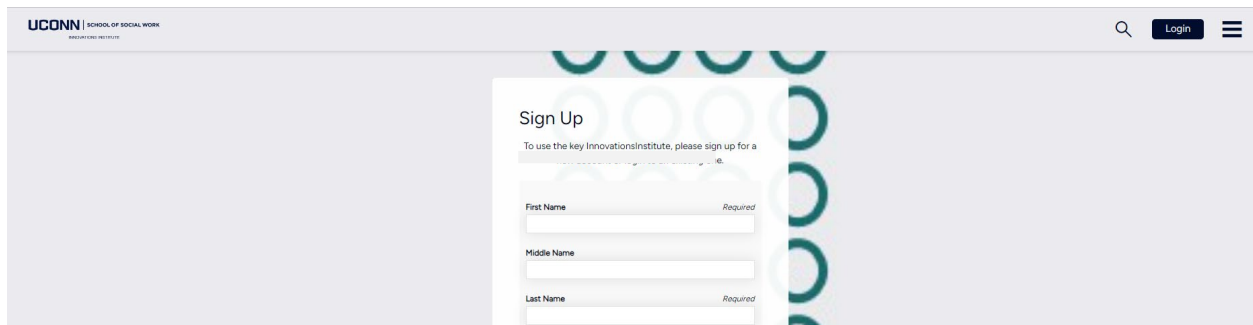


CHDI's guidance for developing an effective CQI process: [Mobile Response for Children, Youth, and Families: Best Practice Data Elements and Quality Improvement Approaches](https://www.chdi.org/mobile-response-for-children-youth-and-families), developed in partnership with Innovation Institute

ATTACHMENT USING AN ENROLLMENT KEY ON INNOVATIONS LMS

1. USING AN ENROLLMENT KEY URL

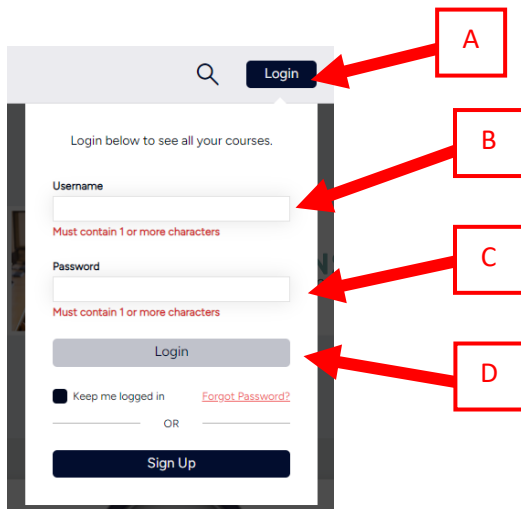
Click on the Enrollment Key URL you were provided (or copy and paste it into your web browser) for the upcoming training/learning community/webinar/conference/symposium you wish to register. Your web browser will open to the Innovations learning management system (LMS). You will then either Login (**Go to Step A**) if you have an existing profile you already set-up OR Sign Up (**Go to Step B**) and create a profile if you have not yet done so.



The screenshot shows the 'Sign Up' page of the Innovations LMS. The page header includes the UConn School of Social Work logo and a 'Login' button. The main content area has a 'Sign Up' heading and a subheading: 'To use the key InnovationsInstitute, please sign up for a'. Below this are three input fields: 'First Name' (marked 'Required'), 'Middle Name', and 'Last Name' (marked 'Required').

A. Log-In with an Existing Profile

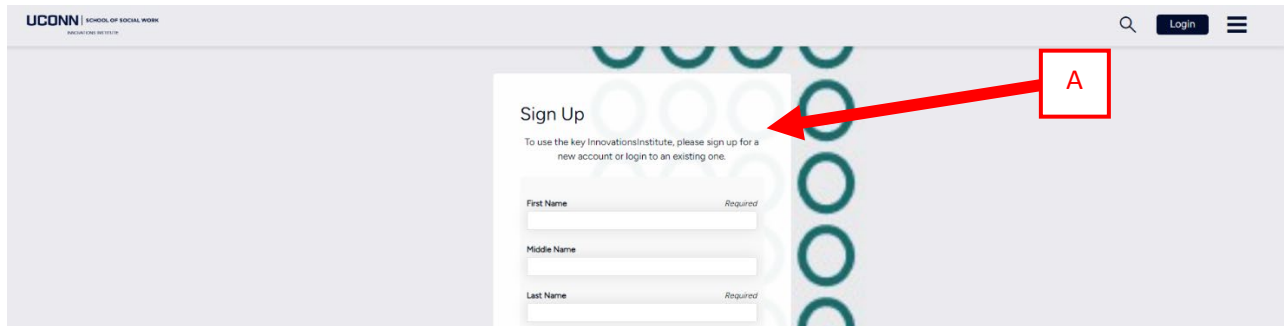
If you have an existing profile set-up in the Innovations LMS, click the Login button in the top right corner of screen (**A**) type in the email (**B**) and password (**C**) that you used to create your account in the Innovations LMS. Then click the Login button (**D**).



The screenshot shows the 'Login' page of the Innovations LMS. The page header includes a search icon and a 'Login' button. The main content area has a heading 'Login below to see all your courses.' and two input fields: 'Username' and 'Password'. Below the 'Username' field is a red error message: 'Must contain 1 or more characters'. Below the 'Password' field is a red error message: 'Must contain 1 or more characters'. There is a 'Login' button, a 'Keep me logged in' checkbox, a 'Forgot Password?' link, and a 'Sign Up' button. Red arrows point to the 'Login' button in the header (A), the 'Username' field (B), the 'Password' field (C), and the 'Login' button in the main content area (D).

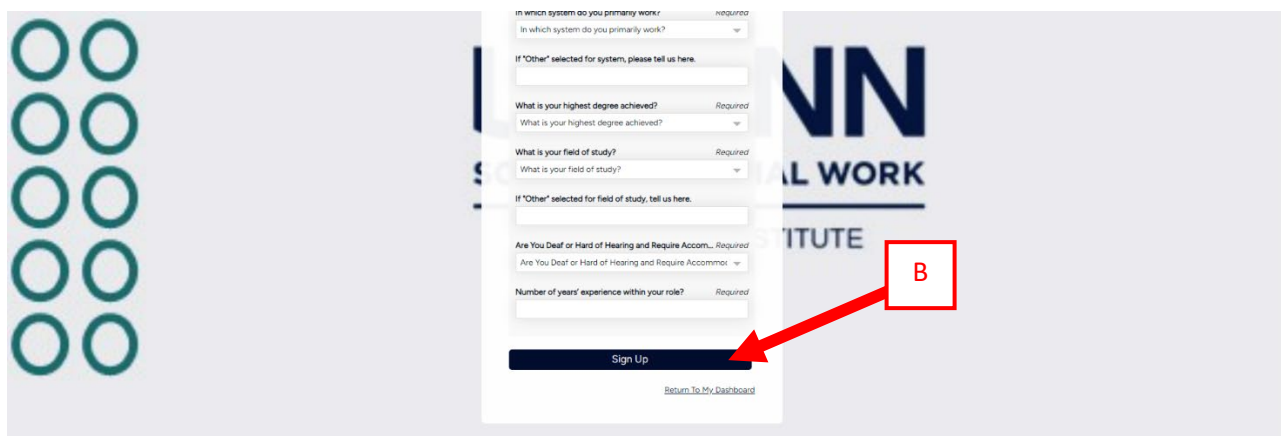
B. Creating a New Profile

The Sign Up form (A) will pop-up. You must provide all required information noted with an asterisk (*) next to the required items.



A screenshot of the UConn School of Social Work Innovations Institute website. A "Sign Up" form is centered on the page. The form has a title "Sign Up" and a sub-header "To use the key InnovationsInstitute, please sign up for a new account or login to an existing one." Below this are three input fields: "First Name", "Middle Name", and "Last Name". The "First Name" and "Last Name" fields are marked as "Required" with an asterisk. A red box labeled "A" is positioned to the right of the form, with a red arrow pointing to the "Sign Up" form.

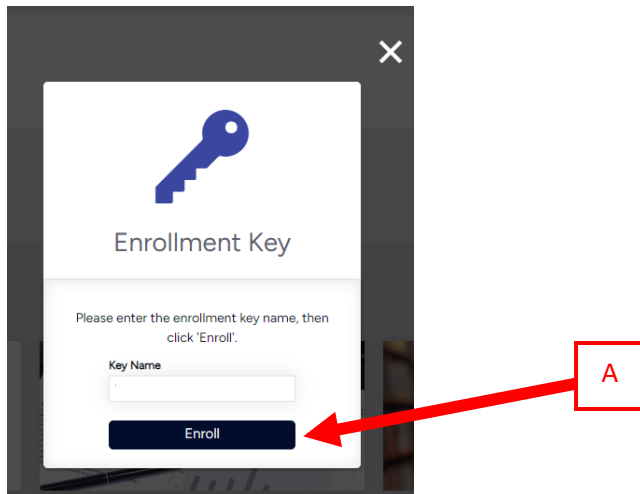
Once you've completed the Sign Up form, then click the blue Sign Up button (B) at the bottom of the form. You will then be directed into the Innovations LMS dashboard.



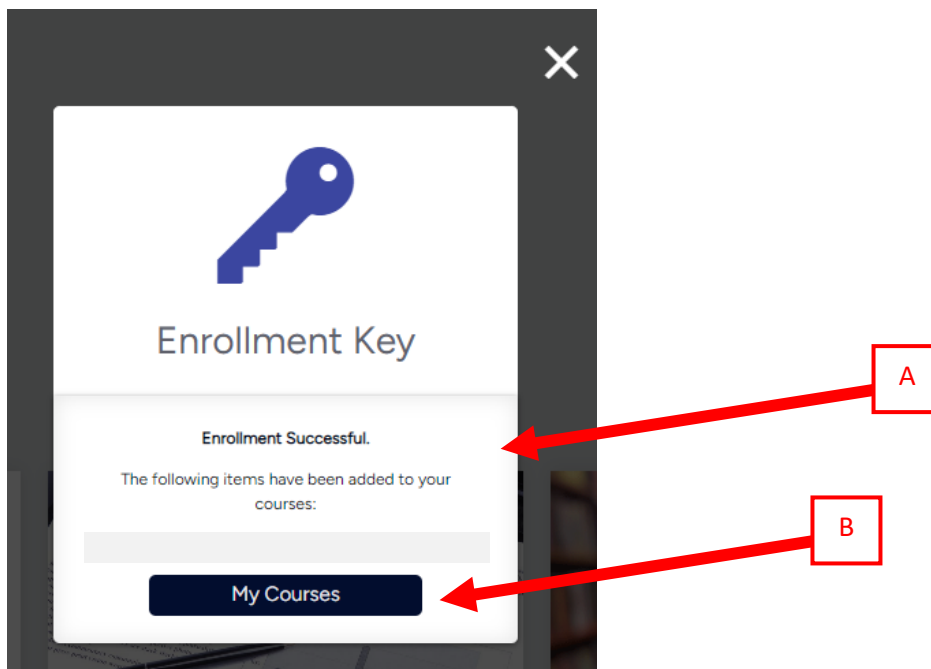
A screenshot of the UConn School of Social Work Innovations Institute website, showing the "Sign Up" form. The form includes several required fields: "In which system do you primarily work?", "What is your highest degree achieved?", "What is your field of study?", "Are You Deaf or Hard of Hearing and Require Accom...", and "Number of years' experience within your role?". Each of these fields is marked as "Required" with an asterisk. At the bottom of the form is a blue "Sign Up" button. A red box labeled "B" is positioned to the right of the button, with a red arrow pointing to the "Sign Up" button.

2. USING THE ENROLLMENT KEY

After you sign-up or login, you will see a pop-up for your enrollment key. Click the Enroll button (A) to use the enrollment key and enroll in the training/learning community/webinar/conference/symposium.



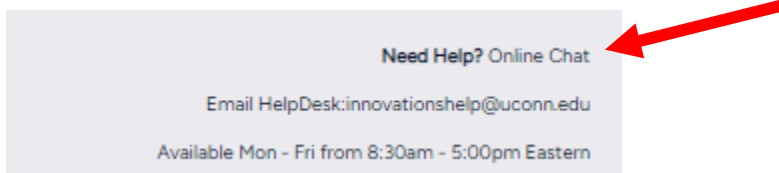
Once you click Enroll, you will get confirmation pop-up (A) that you have been enrolled in that training/learning community/webinar/conference/symposium. You can click the My Courses button (B) to go to your training/learning community/webinar/conference/symposium in the My Courses tile on your dashboard.



NEED ASSISTANCE?

If you run into issues using the enrollment key or not being able to see the training, please contact our Help Desk for assistance. Let them know which enrollment key you were provide (*Pro-tip: send them the enrollment key url you were provided*) and they will assist you troubleshooting your issue.

You can contact the HelpDesk, by email innovationshelp@uconn.edu or online live chat. Look for live chat link at bottom of LMS webpage.



Help Desk is available Monday – Friday from 9am – 5pm ET, excluding holidays.