




# Higher Education Governance

Considerations for the Study Committee on the  
Future of the University of Wisconsin System

Sarah Pingel, Ed.D.  
Sept. 26, 2024



## About NCHEMS



The National Center for Higher Education Management Systems (NCHEMS) is a postsecondary education research and advising organization that unlocks data and evidence to help states, systems, and institutions design policies and practices to meet their goals.



Since 1969, we've been engaging higher education leaders and state and system-level policy makers, providing the insights and intelligence they need to create and sustain successful higher education institutions and systems.

# Agenda

- Building the Foundation for Good Governance
- Overview of State Approaches to Postsecondary Governance
- Recommended Next Steps for Wisconsin
- Questions and Discussion



**By 2031, 72% of jobs in the U.S.  
will require postsecondary  
education or training.**

**How will Wisconsin prepare?**

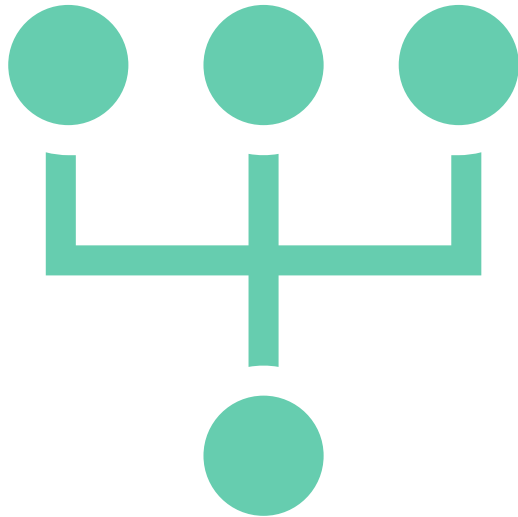
Source: Georgetown Center on Education and the Workforce.

# Building the Foundation for Good Governance

# Building the Foundation for Good Governance



# Common Themes in State Goals for Higher Education



- Increase educational attainment.
- Closing gaps in participation and credential attainment.
- Respond to critical workforce needs.
- Increase the size and scope of the state's economy.
- Serve urban and rural communities across the state.
- Maintain affordability for students.

# Overview of State Approaches to Postsecondary Governance



# Definitions

- **Coordinating Boards** focus on statewide policy leadership. Coordinating boards allocate state resources, approve missions and approve academic programs. Some coordinating boards implement state policy through drafting, enacting and implementing regulations.
- **Governing Boards** manage systems or institutions by making and implementing decisions. This includes appointing institutional presidents, approving new academic programs, approving institutional budgets and other responsibilities.

# Postsecondary Governance Models: Three Main Approaches

1. A single, statewide coordinating board or agency.
2. A single, statewide governing board.
3. Two or more major, systemwide coordinating or governing boards.

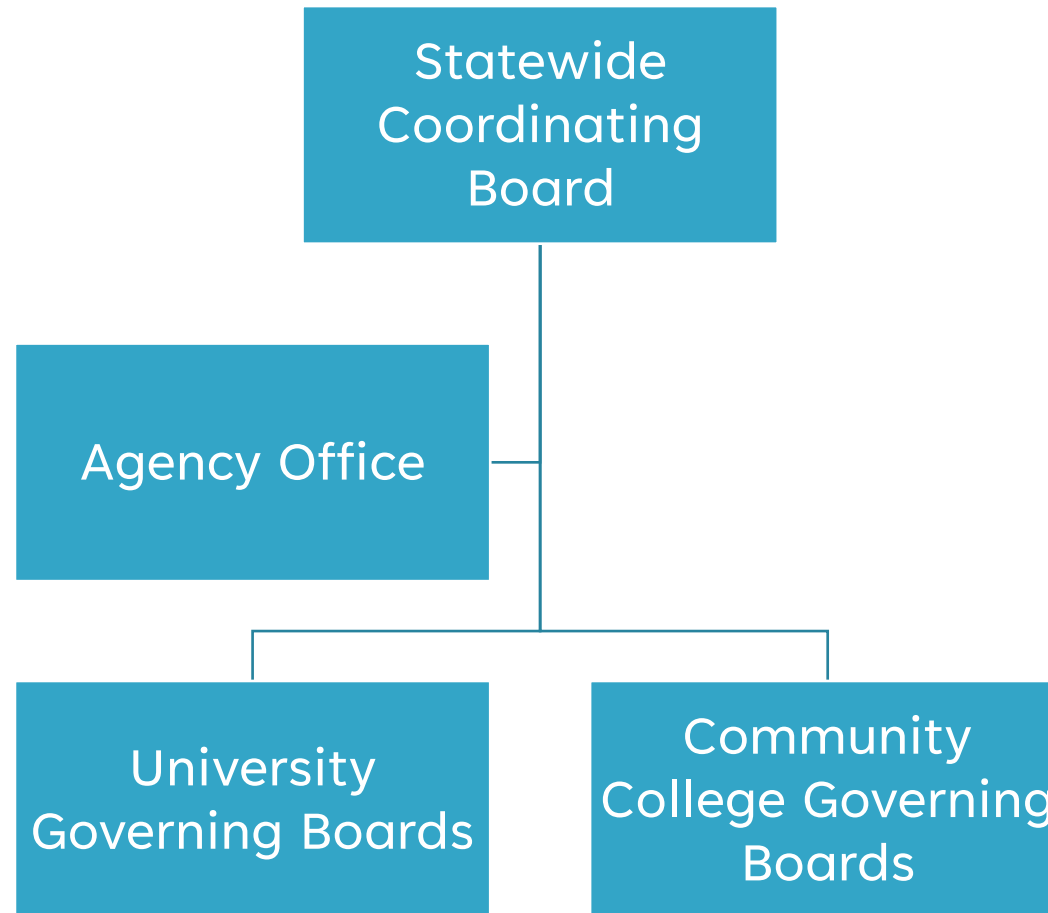
## A decorative graphic in the bottom right corner. It features several overlapping geometric shapes: a large teal triangle pointing down, a large orange triangle pointing up, a smaller teal triangle pointing down, and a blue diamond. A dark blue line forms a stylized 'V' or 'W' shape. In the bottom left corner, there is a small, light gray map of Maryland with a dark blue rectangle highlighting the Baltimore area.



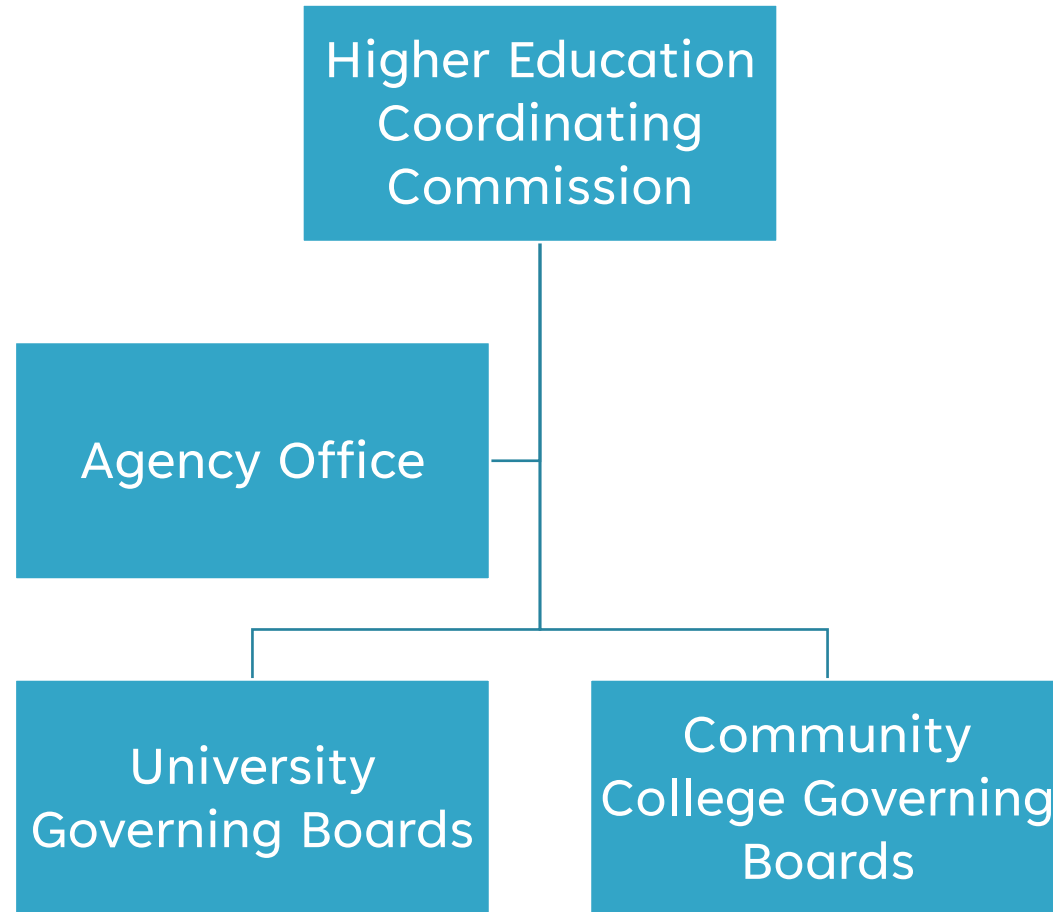
Powered by Bing  
© GeoNames, Microsoft, TomTom

11

# Single, Statewide Coordinating Board or Agency



# Oregon



# HECC Responsibilities

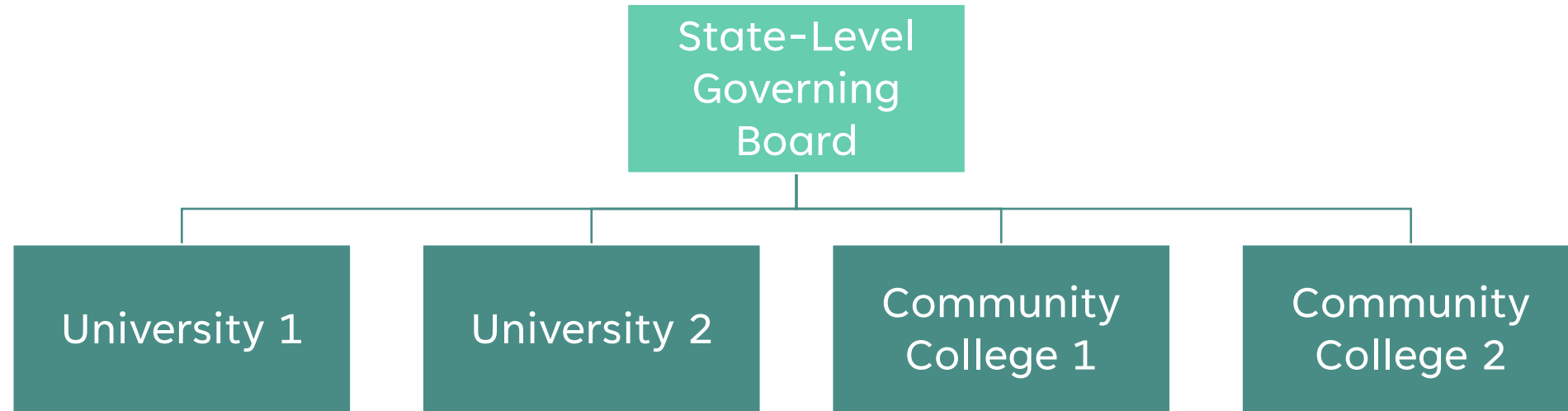
- **Implementing statute through effective regulation.**
- Provide one strategic vision for Oregon higher education planning, funding and policy.
- Establish methodologies for distributing public funding to community colleges, public universities, students and workforce boards.
- Coordinate postsecondary degrees, programs and academic pathways.
- Administer key Oregon financial aid, workforce and other programs.
- Evaluate and report on the success of higher education and training efforts.

## A decorative graphic in the bottom right corner featuring overlapping geometric shapes: a teal diamond, an orange chevron, and a blue-outlined chevron. To the left of these is a light gray map of New England, showing the outlines of Maine, New Hampshire, Vermont, Massachusetts, Connecticut, and Rhode Island.



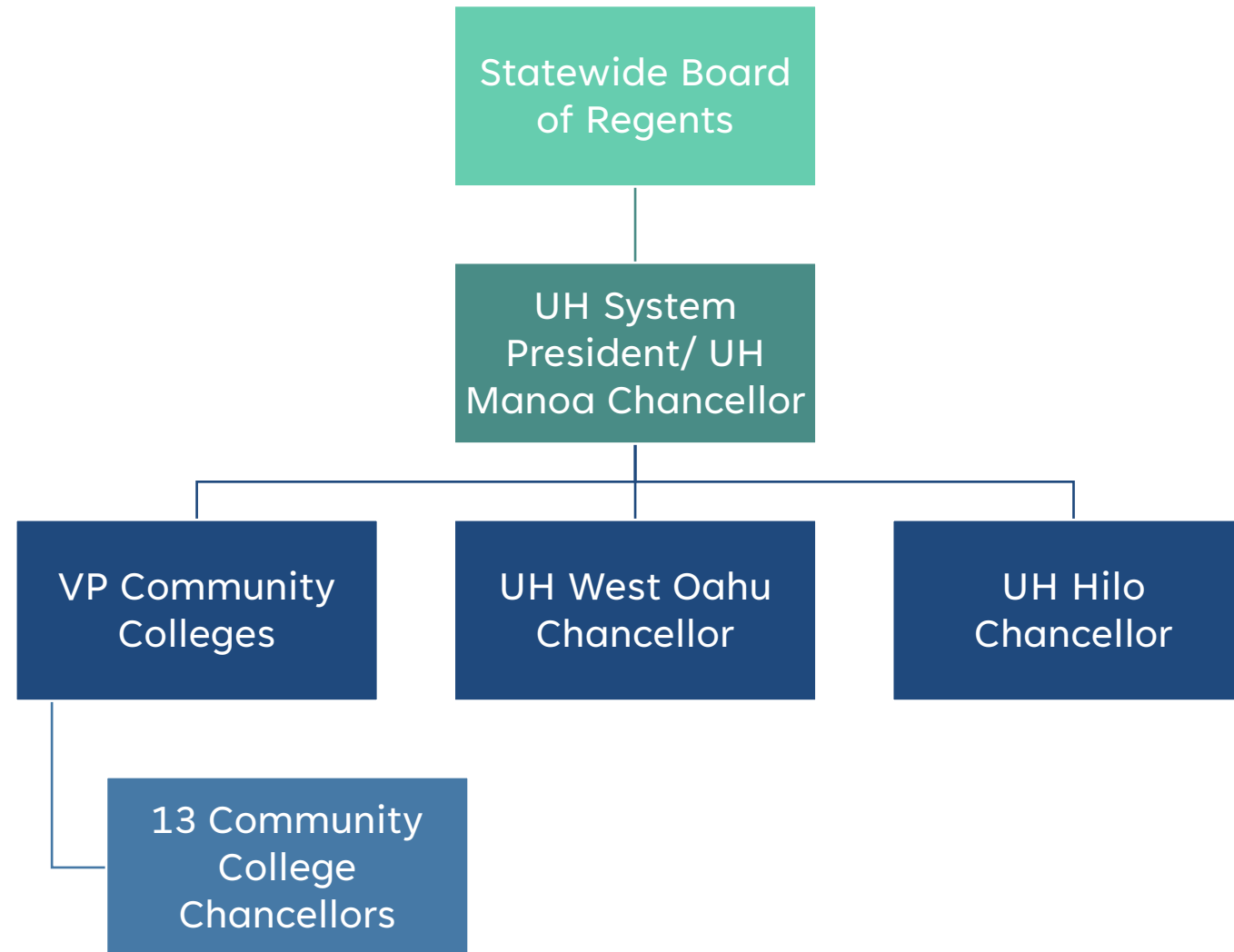
Powered by Bing  
© GeoNames, Microsoft, TomTom

# Single, Statewide Governing Board





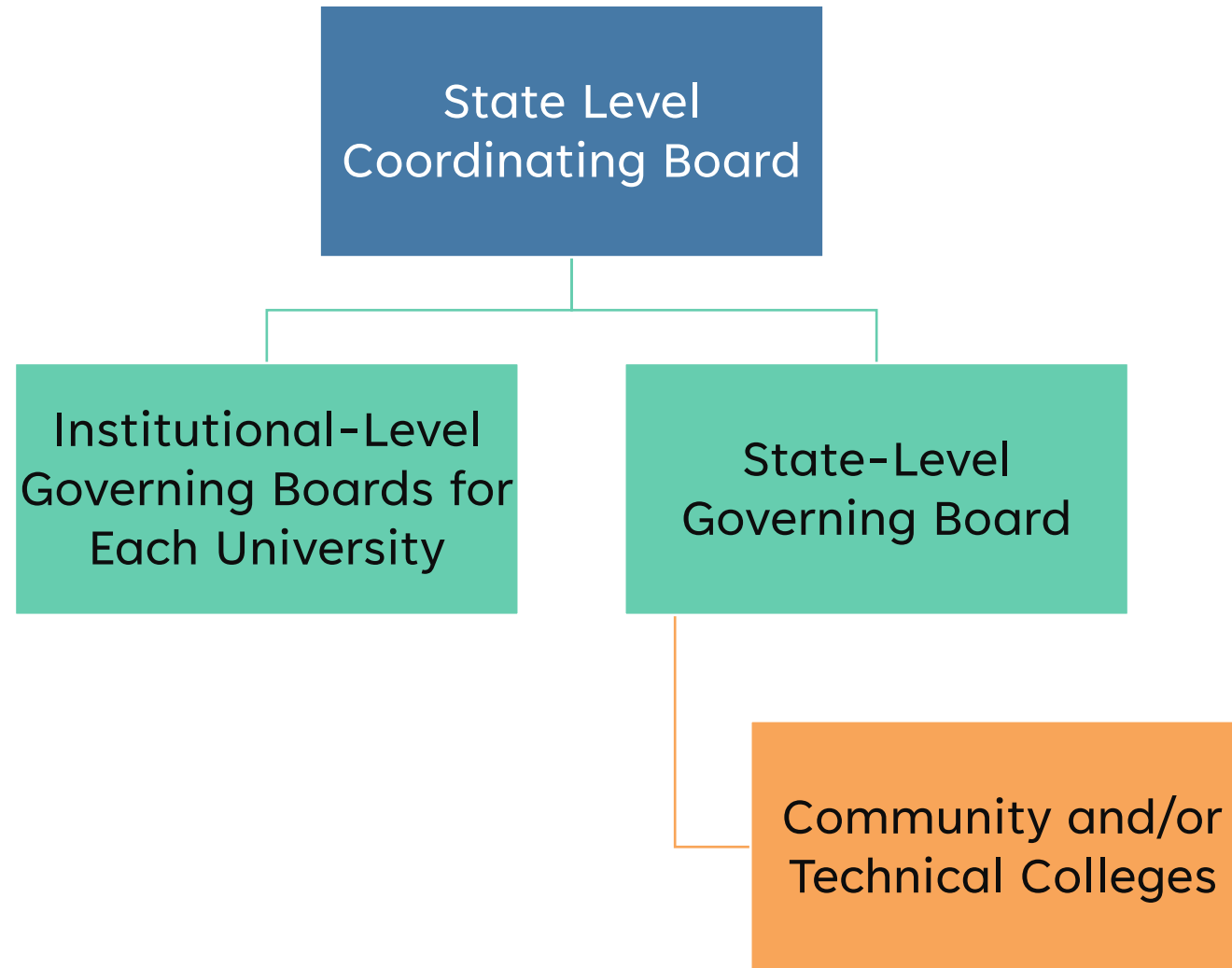
# University of Hawaii System



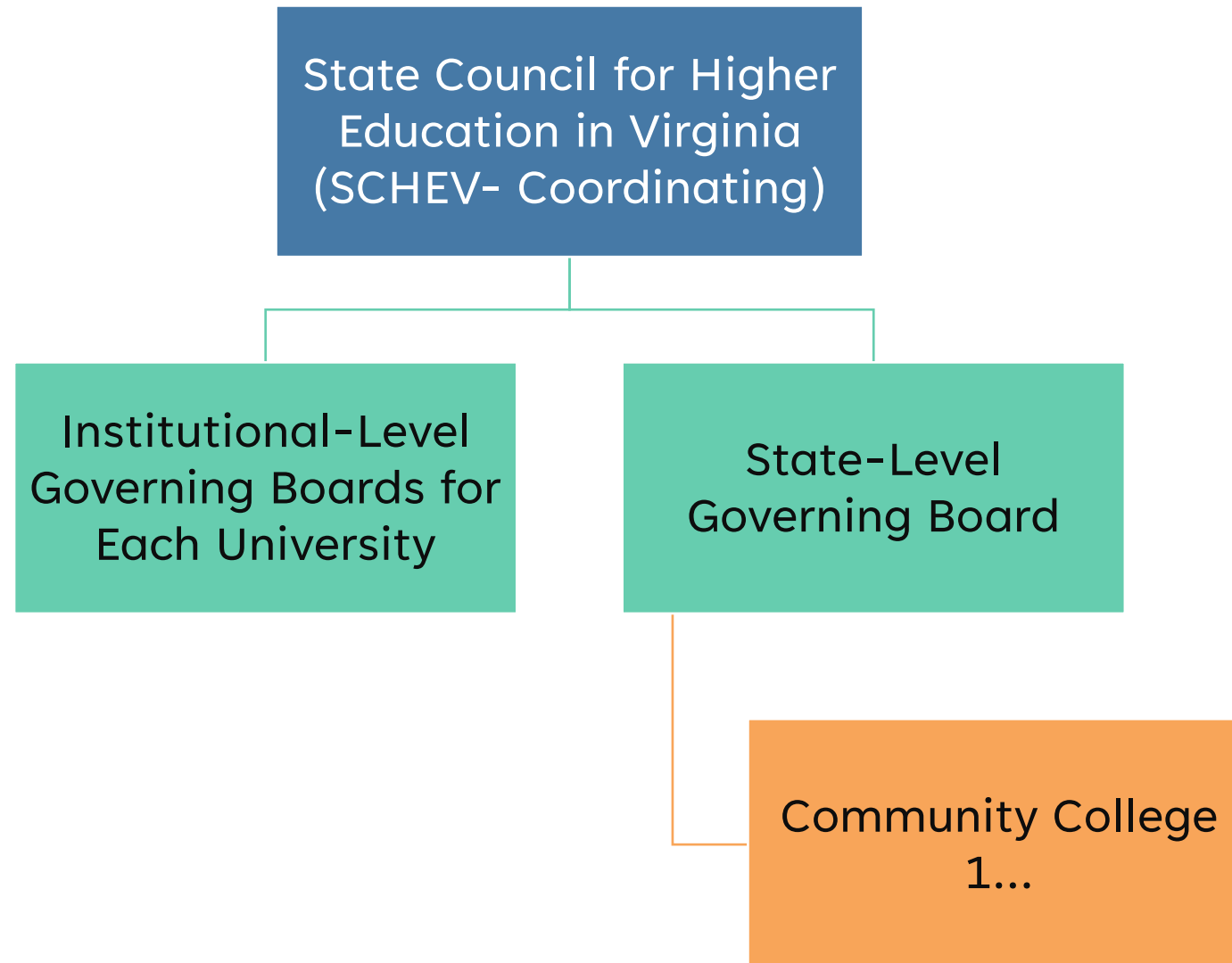


Powered by Bing  
© GeoNames, Microsoft, TomTom

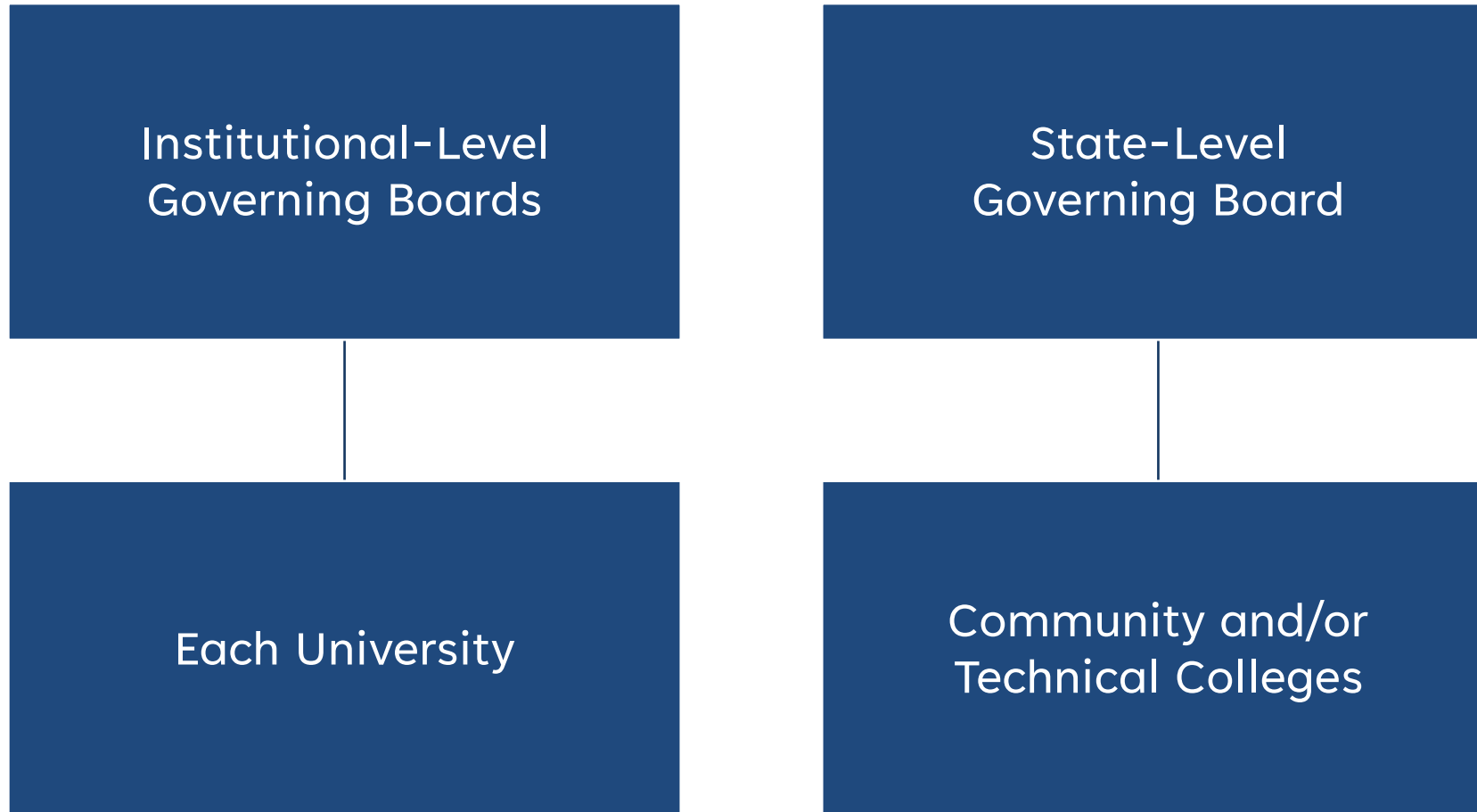
# Two or More Major, Systemwide Coordinating or Governing Boards



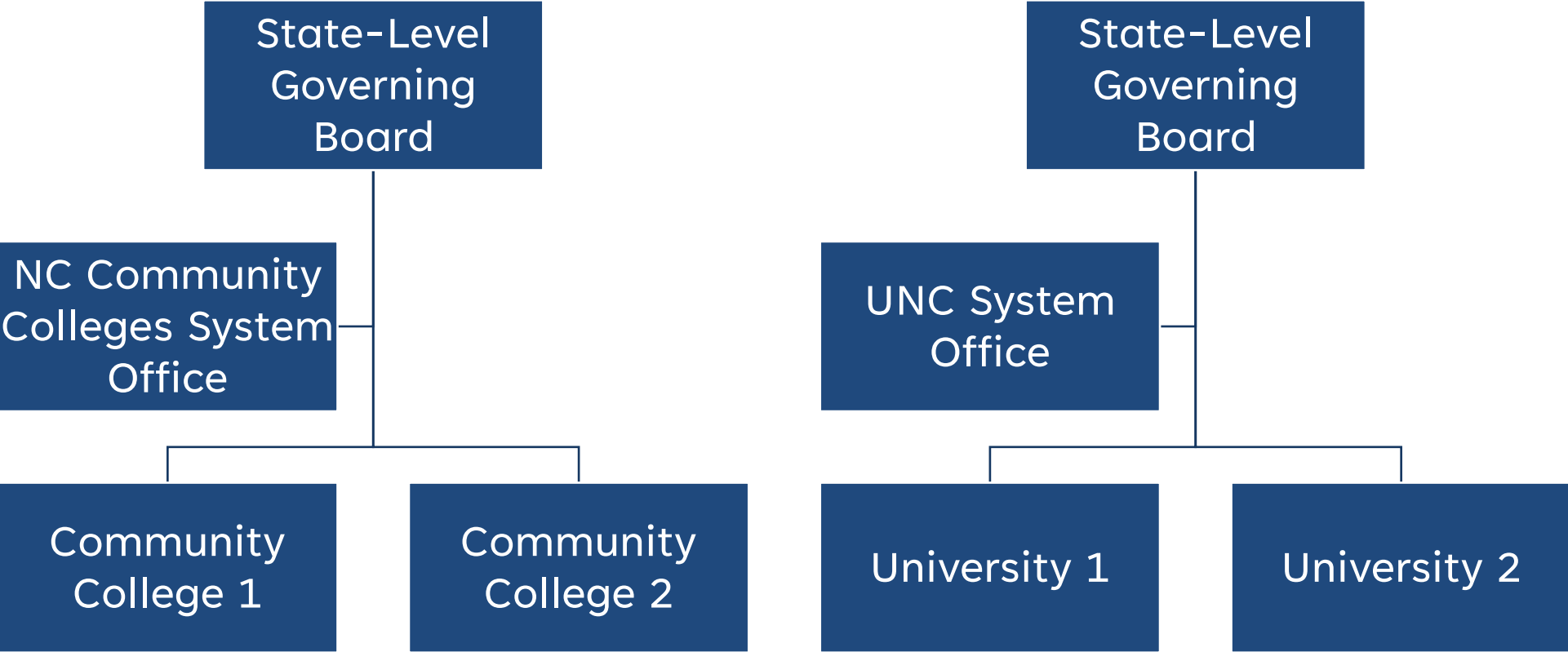
# Virginia



# Two or More Major, Systemwide Coordinating or Governing Boards



# North Carolina



# Recommendations

- Let Wisconsin's governance structure be determined by the functions Wisconsin needs it to perform.
- Set the stage for effective statewide policy leadership for higher education by developing a statewide plan and goals for higher education, informed by:
  - Workforce needs.
  - Participation rates across the state.
  - Demographic trends.
  - Costs to students and the state.
- Conduct an audit of existing policies to determine the nature of the barriers that are keeping higher education from reaching the plan's goals, including:
  - State funding policy.
  - Tuition-setting policy.
  - Academic program approval and review.
  - Organization and governance.

# Contact Information

**Sarah Pingel, Ed.D.**

Vice President, NCHEMS

[sarah.pingel@nchems.org](mailto:sarah.pingel@nchems.org)