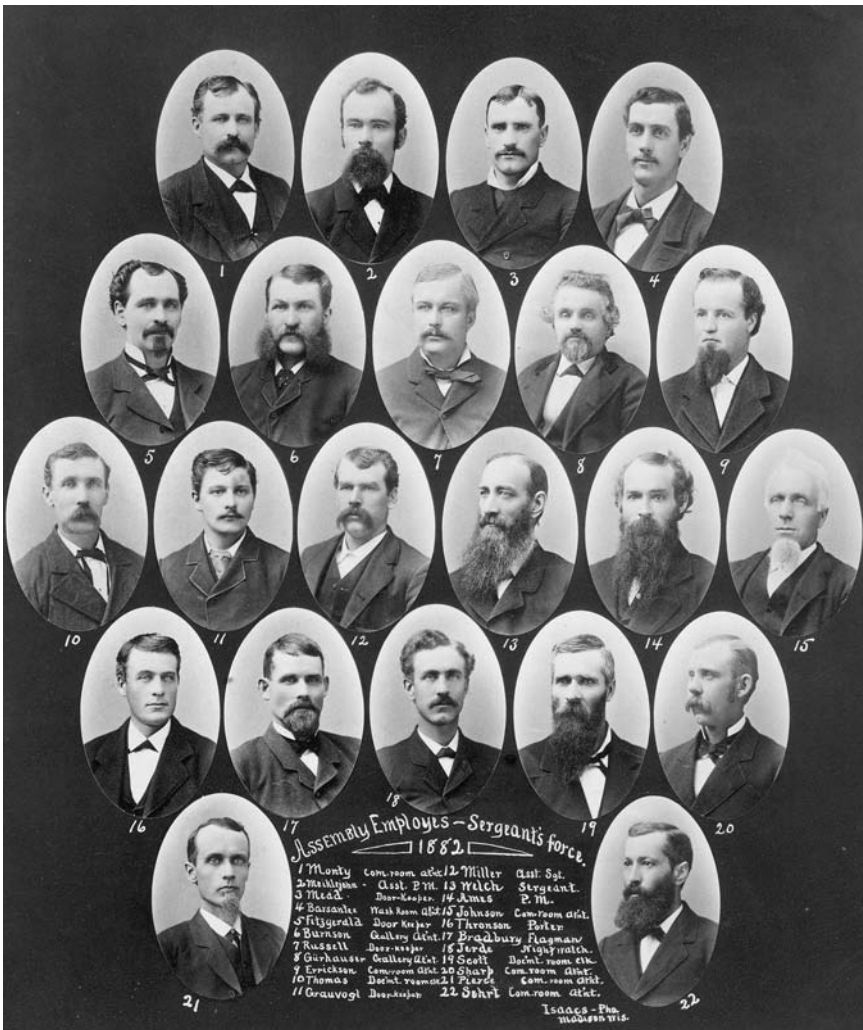


Alphabetical Index

1882 Assembly Employees – Sergeant’s Force



(State Historical Society, #WHI 46810)

ALPHABETICAL INDEX

A	Page
Abrahamson, Shirley S., supreme court chief justice	8, 9, 578, 583, 725
Academic excellence, division, public instruction department	484-85, 486
Accidents, traffic, <i>see</i> Motor vehicles, crashes	
Accounting examining board	354, 496 , 499
Acid deposition research council	381
Acts, Wisconsin (session laws)	274, 276, 278
Adjutant general	354, 463, 468
list of, 1839 – 1962, <i>see</i> 1962 Blue Book, 200	
special articles in prior <i>Blue Books</i>	193
Administration department	328, 330, 334, 354, 376-94
Administrative code	276, 278, 283-84, 290-91
Administrative judicial districts	588
Administrative rules clearinghouse	290-92
Administrative rules review committee	283-84
Adoption and medical assistance interstate compact	574
Adult education, vocational	510-14
Adult institutions division, corrections department	412, 416-17
Adult offender supervision board, interstate	354, 419
compact for	574
Aerospace Authority, Wisconsin	354, 553
AFDC, <i>see</i> Wisconsin Works (W-2)	
Affirmative action council on	354, 391-92
division, employment relations department	390
special committee on	293-94
Aging and long-term care, board on	354, 382-83
Agreement on detainers	574
Agricultural development division, agriculture, trade and consumer protection department	395, 397
Agricultural producer security council	400
Agricultural resource management division, agriculture, trade and consumer protection department	395, 397-98
Agricultural safety and health center	535
Agricultural statistician, state	395
Agricultural statistics	615-24
Agricultural statistics service, Wisconsin	395
Agriculture, trade and consumer protection board	354-55, 395, 397
department	328, 331, 354-55, 395-402
Aid to families with dependent children, <i>see</i> Wisconsin Works (W-2)	
Air and waste division, natural resources department	472, 474-75
Air pollution	333, 472, 474 , 655
Airport authorities, special committee on	294
Airports, <i>see</i> Aviation	
Albers, Sheryl K., representative	53, 910-23
Alcohol and other drug abuse, state council on	337, 355
Alcohol and other drug abuse programs, council on, public instruction department	490
Alcoholic beverages, significant legislation, 2005 session	312
America's Dairyland	964
Anderson, Terry C., director, legislative council	290
Animal health division, agriculture, trade and consumer protection department	395, 398
Animals, state (badger, cow, white-tailed deer)	964
Appeals court	579, 585-86
vote for judges	892-93
Appellate division, state public defender office	483
Appointments by governor	339-74
Apportionment maps of districts	17, 20-98
population of districts	17
special articles in prior <i>Blue Books</i>	192
Apprenticeship and training	547
Apprenticeship council	550-51
Archaeologist, state	447
Architects, landscape architects, professional engineers, designers and land surveyors examining board	355, 496 , 499
Archivist, state	448
Arson	458, 460
Articles, special, in <i>Blue Books</i> , 1960 to 2005	192-93
Artistic endowment foundation, Wisconsin	329, 560-61
Arts board	355, 515-16
Asian population	802, 804-05, 808
Assembly caucus chairpersons	29, 33, 260
chief clerk	19, 86, 260, 264, 729-30
committees	261-62, 279-302
compensation	264-65
composition	277
elections	910-23
employees	268
majority leader	19, 45, 260, 728
assistant majority leader	19, 75, 260
maps of districts	20-84, 88-98
members, biographies and photos	21-85
members, list of, 1848 – 2007	119-89
minority leader	19, 63, 260, 728
assistant minority leader	19, 33, 260
officers	19, 260, 726-30
profile	261-68
sergeant at arms	19, 86, 260, 264, 729-30
sessions	265-66, 731-35

speaker 19, **83**, 260, 726-27
 speaker pro tempore 19, **59**, 260
 term of office 261, 262
 Assessment of manufacturing property 506
 Assessors, state board of 506
 Assigned counsel division, state public
 defender office 479
 Associations, statewide 625-39
 Athletic trainers affiliated credentialing
 board **497**, 500
 Attorney general 326-27, 458, **460**
 biography and photo 6, 7
 elections 929-30
 list of, 1848 – 2007 722-23
 Attorneys, admission to bar 603
 Auctioneer board 355, **496**, 499
 Auctioneers, licensing of 496
 Audit bureau, legislative 305-06
 Audit committee, joint legislative 290
 Autism advisory council 341
 Authorities, state 329, 553-59
 Automatic fire sprinkler system contractors
 and journeymen council 407
 Automobiles
 crashes 852-54
 registrations 520, 524, 851
 usage and gasoline mileage 642
 Aviation 522, 524, 848-49
 fuel tax 828
 Azar, Lauren, commissioner,
 public service commission 369, 492

B

BadgerCare program 439, 822
 Baldwin, Tammy, congresswoman **13**, 736, 738,
 899, 902
 Ballard, state (“Oh Wisconsin, Land
 of My Dreams”) 965-66
 Ballweg, Joan, representative **47**, 910-23
 Banking division, financial institutions
 department 430, **431**
 Banking review board 356, **433**
 Banks, statistics 645-47
 Bar association, *see* State bar of Wisconsin
 Bar examiners board 580, **598-99**
 Baraboo/Sauk county college – UW 534, 659, 660
 Barbering and cosmetology examining
 board 356, **496**, 499
 Barish, Lawrence S., research
 manager, LRB ii, iv, 307
 Barron county college – UW 534, 659, 660
 Bauman, Susan, commissioner,
 employment relations commission 359, 427
 Bay-Lake regional planning
 commission 562
 Benedict, Chuck, representative **49**, 910-23
 Berceau, Terese, representative **71**, 910-23
 Beverage, state (milk) 965
 Bicycle coordinating council 341-42

Bies, Garey, representative **21**, 910-23
 Biographies and pictures 4-86
 index to biographies 2-3
 Bird, state (robin) 963
 Birth defect prevention and
 surveillance, council on 441
 Birth records, statistics 333, 809-11
 Black, Spencer, representative **71**, 910-23
 Black population 802, 804-05, 808
 Blazel, Edward (Ted), senate sergeant
 at arms 18, **86**, 260, 729-30
 Blind
 blind and visual impairment
 education council 490
 blindness council 441
 business enterprise program 549
 center for 486, 487
Blue Book 308-09
 artwork and photographs ii
 distribution i
 governor’s foreword iii
 introduction iv-v
 special articles in prior *Blue Books* 192-93
 table of contents vi-x
 Board services division, regulation
 and licensing department 495, **502**
 Boyle, Frank, representative **69**, 910-23
 Bradley, Ann Walsh, supreme court
 justice **8**, 9, 578, 583, 725
 Bradley center sports and entertain-
 ment corporation 356, **560**
 Breske, Roger M., senator **42**, 905-09
 Broadcasting stations 797-99
 Budget, state 274, 376, **380**
 special articles in prior *Blue Books* 192
 statistics 827-30
 Building commission **285**, 356
 Building inspector review board **356**, **410**
 Building program, state 285, 380
 Buildings and safety, significant legislation,
 2005 session 312, 322
 Burial sites preservation board 356, **452**
 Burke, Mary P., secretary,
 commerce department 357, 402
 Burmaster, Elizabeth, state superintendent
 of public instruction **6**, 7, 326, 484, 723
 Busalacchi, Frank, secretary, transportation
 department 372, 516
 Business and consumer law, significant legislation,
 2005 session 312, 322
 Business council, governor’s 342
 Business development division,
 commerce department 403, **405**
 Business management division,
 transportation department 520, 524
 Butler, Louis B., Jr., supreme court justice **9**, **10**,
 578, 583, 725

C

Campaign financing 262, 422, 434, **884-86**
 Campus safety, governor’s task force 342-43

- Capital area regional planning
 - commission 563
- Capitol and executive residence
 - board, state 371, **389**
- Capitol police, division of 376, **379**
- Capitol press corps 269
- Capitol visitor's guide 194-95
- Carpenter, Tim, senator 18, **24**, 260, 905-09
- Cartographer, state 535
- Caucus chairpersons **29, 33, 50, 58**, 260
- Caucuses, legislative 260, 262
- Cemetery board 356, **496**, 499
- Centers for the developmentally
 - disabled 436, 439, 825
- Central Wisconsin center for the
 - developmentally disabled 436, 825
- Certification standards review council 381-82
- CESA, *see* Cooperative educational
 - service agencies
- Charitable gaming office 378
- Charter schools, special committee on 295
- Charter schools, statistics 674
- Chiarkas, Nicholas, state public
 - defender 482
- Chief clerks, legislature 18, **19**, **86**, 260, 264
 - list of, 1848 – 2007 729-30
- Child abuse and neglect prevention
 - board 356, **443**
- Children
 - child support 440, 547, 549
 - delinquent 417, 825
 - handicapped 487
 - institutions for 415-16, 417, 825
 - significant legislation, 2005 session 313-14
- Children and family services division,
 - health and family
 - services department 436, **438**
- Chiropractic examining board 348, **498**, 499
- Cigarette tax 828
- Circuit courts 579, 587-92
 - clerks 746
 - current judges 589-592
 - vote for judges 894-96
- Circus world museum 450, 712
 - foundation 356
- Cities
 - government 255
 - incorporation year, number,
 - population 740, 749-52
- Citizen corps council, state of Wisconsin 343
- Civil defense,
 - see* Emergency management division
- Civil law, significant court decisions 609-12
- Civil service, *see* Classified service
- Claims (against the state) board 356, **383**
- Clancy, Daniel, president and state director,
 - technical college system 510
- Classified service 329-30, **390-91**,
 - 740-42
- Climate
 - special articles in prior *Blue Books* 192
 - temperature and precipitation 690
- Coastal management council,
 - Wisconsin 343-44
- Coat of arms, state 962
- Coggs, Spencer, senator **30**, 260, 905-09
- Collective bargaining 330, 390-91
- College savings program board 357, **510**
- Colleges, University of Wisconsin **534-35**, 659
- Colleges and universities, private 663
- Colón, Pedro, representative **25**, 910-23
- Columbia correctional institution 412, 825
- Colwin, Jane, state law librarian 594
- Commerce and industry 331-32
 - special articles in prior *Blue Books* 192
 - statistics 640-47
- Commerce department 328, 331-32,
 - 357, **402-11**
- Commercial fishing boards 363, 481
- Committees, legislature 267-68, 270-72,
 - 279-302
- Communications and industry services
 - bureau, tourism department 514
- Community-based economic development
 - program 405
- Community corrections division,
 - corrections department 415, **417**
- Community youth and family aids program 417
- Compensation and labor relations division,
 - state employment relations office 390, **391**
- Congressional district map,
 - population 17
- Congressional representatives from
 - Wisconsin 11-16
 - list of, 1848 – 2007 736-39
 - territory of Wisconsin,
 - see* 1944 *Blue Book*, 354
 - vote 897-904
- Conservation, *see* Environment
 - special articles in prior *Blue Books* 192
- Conservation and recreation statistics 648-57
- Conservation congress 480
- Conservation fund 831
- Constitution, Wisconsin **198-240**, 252, 261
 - table of contents 198-99
 - votes on amendments 241-46
- Constitutional amendments 241, 246, 887
 - significant legislation, 2005 session 314, 322
- Constitutional law,
 - significant court decisions 605
- Constitutional officers, departments 327
 - attorney general **6**, 7, 326, 458-62
 - list of, 1848 – 2007 722-23
 - biographies and photos 4-7
 - current, list of 326
 - governor **4**, 5, 326, 335-38
 - list of, since 1848 720
 - lieutenant governor **4**, 7, 326, 375
 - list of, 1848 – 2007 721
 - public instruction, state
 - superintendent **6**, 7, 326, 484-92
 - list of, 1848 – 2007 723
 - residences 326
 - salaries 326

- secretary of state 6, 7, 326, 508-09
 list of, 1848 – 2007 721-22
 state treasurer 6, 7, 326, 509-10
 list of, 1848 – 2007 722
- Consumer protection 331, 397-98
- Contractor certification council 407
- Controlled substances board 357, **497**, 499
- Conveyance safety code council 407
- Cooperative educational service agencies (CESA) 332
- Coroners and medical examiners, special committee on powers and duties of 297
- Corporate and consumer services division, financial institutions department 430, **431-32**
- Corporations 332, 430-32, 645
 income tax 828, 839
- Correctional institutions
 adult **412-17**, 825
 juvenile **415-17**, 825
 population and expenditures 824, 825
- Correctional system, significant legislation, 2005 session 314
- Corrections compact 574
- Corrections department 328, 334, 357, **412-19**
 parole and probation,
see Division of hearings and appeals
- Counselors examining board,
see Marriage and family therapy, professional counseling and social work examining board
- Counties
 clerks' addresses 745
 area 743
 board chairpersons 255, 744
 circuit court clerks 255, 746
 clerks 254, 745
 coroners 255, 747
 county seats 743
 creation date 743
 district attorneys 254, 747
 executives, administrators 255, 744
 highways 850
 medical examiners 255, 747
 number of 252, 740
 population 743
 registers of deeds 255, 746
 sheriffs 254, 747
 supervisors, number of 254, 744
 surveyors 255, 748
 treasurers 255, 746
- Court commissioners
 circuit court 589
 supreme court 583-84
- Courts 252, 254, 579-93
 administrative districts, circuit courts 587, 588
 appeals court 585-86
 circuit courts 587, 592
 commissioners 583-84, 589
 director of state courts 594
 elections 889-96
 judges 578, 583, 585-86, 589-92
 law library, state 594-95
 municipal courts 580, 593
 profile 579-82
 supreme court 583-84
 supreme court, appeals court decisions 605-12
- Courts and civil actions, significant legislation, 2005 session 314, 322
- Cowles, Robert L., senator **22**, 905-09
- Credit union review board 357, **434**
- Credit unions, office of 357, **433-34**
- Credit unions, statistics 647
- Crematory authority council 357, **496**, 499
- Crime and criminal procedure, significant legislation, 2005 session 314-15, 323
- Crime victim compensation program 460
- Crime victims council 462
- Crime victims rights board 357, **462**
- Crime victims services office 458, **460**
- Crimes against children, special committee on review of 297-98
- Criminal investigation division, justice department 458, **460**
- Criminal law, significant court decisions 606-09
- Criminals, legal representation,
see State public defender office
- Criminal penalties, joint review committee **286**, 357
- Crooks, N. Patrick, supreme court justice **9**, **10**, 578, 583, 725
- Cullen, David A., representative **29**, 910-23
- Curriculum advisory committee, law enforcement standards board 463
- Customer and employee services division, natural resources department 472, **475**
- Customer and technology services bureau, tourism department 514-15

D

- Dairy center authority, world,
see World dairy center authority
- Dance, state (polka) 965
- Darling, Alberta, senator **34**, 905-09
- Davis, Brett H. representative **73**, 910-23
- Deaf, school for 487
- Deaf and hard of hearing, council for the 357, **441**
- Deaf and hard-of-hearing education council 490-91
- Death records, statistics 809, 810, 812
- Debt, public 380, 843-45
- Decker, Russell S., senator **76**, 905-09
- Deferred compensation board 357, **425**
- Delinquent children 417, 825
- Democratic party, state 858, **861-65**
- Dentistry examining board 357, **497**, 499
- Departments of state government 328
- Dependent children, aid to families with,
see Wisconsin Works (W-2)
- Depository selection board 383

Designers examining board, <i>see</i> Architects, landscape architects, professional engineers, designers and land surveyors examining board	
Detainers, agreement on	574
Development finance board	358, 410
Development programs	403, 405
Development zone program	405
Developmental disabilities, council on	358, 444
Developmentally disabled	436 , 439
Dietitians, affiliated credentialing board	358, 498
Disabilities, council on physical	445
Disabilities, governor's committee for people with	344
Disability board	338
Disabled, <i>see</i> Handicapped	
Disaster preparedness planning, special committee on	295
Discrimination, significant legislation, 2005 session	315
Discrimination in employment	333, 549
Disease prevention	438-39
District attorney funding and administration, special committee on	295
District attorneys	254, 747
Divorces	809, 811
Document depository libraries, Wisconsin	614
Dodge correctional institution	412, 825
Dog, state (American water spaniel)	965
Domestic abuse, council on	358, 441-42
Domestic relations significant legislation, 2005 session	315
Doyle, Jim, governor	4 , 5, 326, 335-38, 720, 924, 925, 933-60
Driver licensing	520, 524
Dry cleaner environmental response council	358, 478
Dwelling code council	358, 407-08

E

Early intervention interagency coordinating council	345
East Central Wisconsin regional planning commission	563
Eau Claire campus, UW system	530 , 537, 659, 660
Ebert, Dan, commissioner, public service commission	369, 492
Economic development, state	332, 403, 405
Education significant legislation, 2005 session	315-17, 323
special articles in prior <i>Blue Books</i>	192
statistics	658-75
Education commission of the states	358, 569
Educational approval board	359, 513-14
Educational communications board	328, 332, 359, 420-21
Educational division, educational communications board	420, 421
Educational radio and television	420-21, 797, 799
eHealth care quality and patient safety board	345-46
Election administration council	423
Election campaign fund, Wisconsin	422, 886
Election process, Wisconsin	880-86
special articles in prior <i>Blue Books</i>	192
Election statistics attorney general, vote by county, 2006	929-30
circuit court judges, 2006-2007	894-96
constitutional amendments, historical table	241-46
constitutional amendment	887
court of appeals judges, 2006-2007	892-93
governor historical table	717-20
vote by county, 2006	924, 926
vote by ward, 2006	933-60
lieutenant governor vote by county, 2006	925, 926
vote by ward, 2006	933-60
members of 110th Congress, 2006	897-904
president, historical table	714-16
representatives to the assembly vote by county, 2006	910-17
vote by district, 2006	918-23
secretary of state, vote by county, 2006	927-28
state senators vote by county, 2006	905-07
vote by district, 2006	908-09
state treasurer, vote by county, 2006	931-32
statewide referenda, historical table	247-48
supreme court justices, 2007	889-91
Elections significant legislation, 2005 session	317, 323
Elections board	328, 334, 359, 421-22
Elections in Wisconsin	879-960
Elective state officers	4-7
list of, 1848 – 2007	720-25
Electronic recording council	359, 383-84
Ellis, Michael G., senator	56 , 905-09
Emergency management assistance compact	574
Emergency management division, military affairs department	359, 466, 471
special articles in prior <i>Blue Books</i>	193
Emergency medical services board	359, 444
Eminent domain, significant legislation, 2005 session	317
Employee trust funds board	359, 423, 424
department	328, 334, 423-26
Employees, legislature	268
Employees suggestion board, state	390, 392
Employment, significant legislation, 2005 session	317, 323
Employment and income statistics	676-86
Employment and training division, workforce development department	547, 549
Employment programs	546-52
Employment relations commission	328, 333, 359, 427
office, state	334, 359, 390-92
joint committee on	287 , 330
Endangered resources program	472, 476

- Energy division,
administration department 368, **379**
- Energy statistics 640-42
- Enforcement and science division,
natural resources department 472, **475**
- Enforcement division, regulation
and licensing department 495, **502**
- Engineering services division, educa-
tional communications board 420, **421**
- Engineers examining board,
see Architects, landscape architects,
professional engineers, designers
and land surveyors examining board
- Enrollment in schools 659-63, 666-67, 673
- Enterprise operations division,
administration department 376, **379**
- Enterprise services division
health and family services
department 436, **438-39**
revenue department 503, **505**
- Enterprise technology division,
administration department 376, **379-80**
- Environment
significant legislation, 2005 session 317
special articles in prior *Blue Books* 192
- Environmental and regulatory services
division, commerce department 404, **405**
- Environmental education
board 539-40
center for 535
- Environmental resources 332-33
- Equal rights division, workforce
development department 547, **549**
- Erpenbach, Jon B., senator **72**, 805-09
- Ervin, Roger M., secretary,
revenue department 370, **503**
- Estate tax 828, 839
- Ethan Allen school 330, 416, 418, 825
- Ethics board 328, 334, 359, **428-29**
- Ethics code 334, **428**, 434
- Excise tax 828, 839
- Executive branch 252, 253-54, **323-576**
governor 331, **335-38**
lieutenant governor 331, **375**
profile 327-334
- Executive budget and finance
division, administration
department 376, **380**
- Exports statistics 644
- Expunction of criminal records,
special committee on 295
- Extended supervision 417, 418
- Extension, UW system 534, **535**, 537-38, 661
- Extraordinary session, legislature 266
- Family supports division, workforce
development department 547, **549**
- Famous Wisconsin citizens, list of 703-06
- Farm assets reinvestment manage-
ment loan program 558
- Farm statistics 615-24
- Farmland advisory council 506-07
- Feature article 99-191
special articles in prior
Blue Books, 1960 – 2007 192-93
- Federal aids and tax receipts 839-42
- Federal-state relations office 359
- Feingold, Russell D., U.S. senator **12**, 739, 897-98
- Fields, Jason M., representative **27**, 910-23
- Fertilizer research council 400-01
- Finance, joint committee on 274, **287-88**
- Finance, state, *see* State and local finance
- Finance and management division,
public instruction department 485, **487**
- Finance division,
technical college system 510-11, **512**
- Financial institutions department 328, 332, 359,
429-34
- Financial institutions statistics 645-47
- Financial literacy, governor's council on 346
- Fire department dues program 454, 828
- Fire investigation (arson) 458, 460
- Fire sprinkler system examining council,
see Automatic fire sprinkler
system contractors and
journeymen council
- Fiscal bureau, legislative 306-07
- Fiscal estimates 270
- Fish and wildlife management ... 333, 472, 474, 476-77
- Fish, state (muskellunge) 964
- Fish statistics 649
- Fitzgerald, Jeff, representative 19, **45**, 260, 910-23
- Fitzgerald, Scott L., senator 18, **44**, 260, 905-09
- Flag, state 963
- Floor leaders, legislative 18, 19, **44**, **45**, **48**, **63**,
260, 264, 726-28
- Flower, state (wood violet) 963
- Fond du Lac college – UW 534, 659, 660
- Food inspection 331, 395, **398**
- Food safety division, agriculture,
trade and consumer protection
department 395-96, **398**
- Forest crop tax 828
- Forest management 472, 475-76
- Forest resources
special articles in prior *Blue Books* 192
- Forestry division, natural
resources department 472, **475-76**
- Forestry, council on 360, **478**
- Forests, state 333, 472, 475, 650-57
- Forward Wisconsin, Inc. 404
- Fossil, state (trilobite) 965
- Fox Lake correctional institution 412, 825
- Fox river navigational authority 360, **553-54**
- Fox Valley college – UW 534, 659, 660

F

Framework of Wisconsin government	252-55
organization chart	256-57
state agencies location	250-51
Frank, Matthew J., secretary, corrections department	357, 412
Friske, Donald, representative	43, 910-23
Fruit, state (cranberry)	966
Fuller, Patrick, assembly chief clerk	19, 86, 260, 729-30
Funeral directors examining board	360, 496, 499

G

G.A.R. memorial hall museum, <i>see</i> Wisconsin veterans museum	
Game management	333, 472, 476
Game statistics	649
Gaming division, administration department	378, 380
Garthwaite, Phil, representative	53, 910-23
Gas and energy division, public service commission	492, 493
Gasoline tax	642, 828, 831, 832, 836
Gassman, Roberta, secretary, workforce development department	373, 546
General election, <i>see</i> Election statistics	
Geography special articles in prior <i>Blue Books</i> statistics	192 687-90
Geologist, state	535
Geologists, hydrologists, and soil scientists examining board	360, 496, 499
Gift tax	828, 839
Global warming, governor's task force on	346
Goldman, Amie, executive director, health insurance risk-sharing plan	554
Gordon, Paul P., commissioner, employment relations commission	359, 427
Gottlieb, Mark, representative	19, 59, 260, 910-23
Government, special articles in prior <i>Blue Books</i>	192-93
Government accountability board	328, 422, 429, 434-35
Government employees, state and local	329-30, 390, 740-42
Government records division, secretary of state	508, 509
Government statistics, local	740-77
Governor appointments by biography and photo biographies 1849 – 1959, <i>see</i> 1960 <i>Blue Book</i> , 69-206 elections list of, 1848 – 2007 special articles in prior <i>Blue Books</i> territory of Wisconsin, <i>see</i> 1935 <i>Blue Book</i> , 163 vetoes votes for, 1848 – 2006	252, 253, 323, 326, 327, 328, 335-74 331, 339-74 4, 5 924, 925, 933-60 720 193 253, 275, 331, 335-36, 731-35 717-19

Governor's special committees	341-353
Governor's statutory councils	337-38
Grain, state (corn)	965
Grand army home for veterans, <i>see</i> Veterans affairs department	
Great Lakes compact commission, Wisconsin	360, 569-70
Great Lakes protection fund	360, 570
Great Lakes water resources compact, special committee on	296
Great river road	573
Green party, Wisconsin	858, 866-70
Green Bay campus, UW system	530-31, 537, 659, 660
Green Bay correctional institution	412, 825
Grisby, Tamara D., representative	31, 260, 910-23
Gronemus, Barbara, representative	81, 910-23
Grothman, Glenn, senator <i>see also</i> 2005-2006 <i>Blue Book</i> , 909-13	58, 260
Groundwater advisory committee	339
Groundwater coordinating council	360, 480
Group insurance board	360, 425-26
Gunderson, Scott L., representative	75, 910-23
Gundrum, Mark, representative	19, 75, 260, 910-23

H

Hahn, Eugene, representative	51, 910-23
Handicapped blind and visual impairment education council blindness council deaf and hard of hearing, council for the deaf and hard-of-hearing education council developmental disabilities, council on disabilities, governor's committee for people with education institutions physical disabilities, council on special education, council on student grants vocational rehabilitation	490 441 357, 441 490-91 358, 444 344 486, 487 438, 439, 825 368, 445 492 446 547-49
Hansen, Dave, senator <i>see also</i> 2005-2006 <i>Blue Book</i> , 909-13	18, 78, 260
Harbors	523, 524, 856
Harsdorf, Sheila E., senator <i>see also</i> 2005-2006 <i>Blue Book</i> , 909-13	38
Hassett, Scott, secretary, natural resources department	367, 471
Hayden, Kevin, secretary, health and family services department	361, 435
Health and educational facilities authority, Wisconsin (WHEFA)	329, 360, 556, 845
Health and family services department	328, 333, 361, 435-45
Health and social services, significant legislation, 2005 session	317-18
Health care financing	436, 439, 822, 823
Health care financing division, health and family services department	436, 439

Health care liability insurance plan 361, **455**
 Health insurance risk-sharing plan
 authority (HIRSP) 329, 361, **554**
 Health statistics 809-12
 Healthy Wisconsin council 346-47
 Hearing and speech examining board 361, **497**, 499
 Hearings and appeals division 385
 Hebl, Gary Alan, representative **51**, 910-23
 Heinemann, Lorrie Keating, secretary,
 financial institutions department 359, 429
 Herbarium, Wisconsin state 535
 High points in Wisconsin 687, 689
 High-technology business development
 corporation (Wisconsin
 technology council) 329, **561**
 Higher educational aids board 328, 332, 361, **446**
 Higher educational aids corporation 446
 Highway safety, council on 361, **526**
 Highway weight limits, special committee on 296
 Highways
 aids, finance 828, 832-33, 834
 crashes 852-54
 general 254, 333
 state patrol division,
 transportation department 522, **524**
 statistics 848, 850-54
 transportation investment management
 division, transportation department 522-23, **524**
 transportation system development
 division, transportation department 523, **524-25**
 Hilgenberg, Steve, representative **53**, 910-23
 Hines, J.A., representative **47**, 910-23
 Hintz, Gordon, representative **55**, 910-23
 Historian, state 447
 Historic preservation
 historic preservation — public history,
 division of, state historical society 447, **450**
 review board 361, **452-53**
 Historic sites division, state historical
 society 447-48, **450**
 Historic sites in Wisconsin 707
 Historical markers 707-13
 Historical records advisory board, state 347
 Historical society, state 328, 332, **447-53**
 curators, board of 371, 447, **450**
 historical society endowment
 fund council 362, **452**
 History of Wisconsin
 special articles in prior *Blue Books* 193
 statistics 691-739
 votes on constitutional amendments
 and statewide referenda 241-248
 Hixson, Kim, representative **49**, 910-23
 Home improvement loan program 543, 557-58
 Home inspectors, licensing of 501
 Home loan program 577
 Homeland security council, governor's 347
 Homestead tax credit 505
 Honadel, Mark R., representative **33**, 260, 910-23

House of representatives, U.S.,
 see Congressional representatives
 from Wisconsin
 Housing and community development
 division, commerce department 404, **405-06**
 Housing and economic development
 authority, Wisconsin (WHEDA) 329, 362,
 557-58, 845
 Housing discrimination 549
 Housing rehabilitation 558
 Hraychuck, Ann, representative **39**, 260, 910-23
 Hubler, Mary, representative **69**, 910-23
 Huebsch, Michael D.,
 representative 19, **83**, 260, 727, 910-23
 Human services,
 see Health and family services
 department; Public assistance;
 Social security; Social services
 statistics
 Humane officer, state 395
 Humanities council, Wisconsin 339
 Hutchison, Connie, executive secretary,
 higher educational aids board 361, 446
 Hygiene laboratory board 363, **539**

I

Imprisonment, wrongful,
 see Claims board
 Income, sales and excise tax division,
 revenue department 503, **505**
 Income statistics
 by industry 676, 677-81, 684-85
 gross 683
 personal 676, 678, 686
 Income tax 503, 505, 826, 828,
 836, 837, 839
 Incorporation review board 384-85
 Indebtedness, public 844-45
 Independent agencies 328-29
 Independent living council, statewide 347-48
 Indian gaming 324
 Indians
 population 800, 802, 804,
 805, 806, 808
 reservations 806
 special articles in prior *Blue Books* 192
 tribal chairpersons 807
 Industrial development,
 see Commerce department
 Industrial education,
 see Wisconsin technical college system
 Industrial revenue bond program 405
 Industry
 special articles in prior *Blue Books* 192
 statistics 640, 643, 644
 Information policy and technology,
 joint committee on 289
 Information technology division,
 employee trust funds department 423, **424**
 Information technology management
 board 362, **385**
 Inheritance tax 828, 839

Injured patients and families compensation fund	361, 455
Injured patients and families compensation fund peer review council	455-56
Insect, state (honey bee)	964
Institutions, state	
correctional	412-19
mental	438, 439
population	824-25
state supported programs study and advisory committee, joint legislative	301-02
Insurance	
regulation of rates	453-54
security fund	455
state employees' group	424-25
state life insurance fund	454
tax on premiums	828
Insurance, office of the commissioner	328, 332, 362, 453-56
Insurance security fund board	455
Insurance services division, employee trust funds department	423, 424
Intergovernmental relations division, administration department	378, 380
Interior designers, licensing of	501
International and export development division, commerce department	404, 406
International trade council	348-49
Interoperability executive council, state	349
Interstate adult offender supervision board	354, 419
Interstate agencies	569-73
Interstate compacts	362, 574-76
Interstate juvenile supervision, state board for	419
Invasive species council	362, 480-81
Investment and local impact fund board	362, 507
Investment board, state of Wisconsin	328, 334, 362, 456-58
J	
Jackson, Cecilia M., secretary, regulation and licensing department	369, 495
Jackson correctional institution	414, 417, 825
Jauch, Robert, senator	68, 905-09
Jeskewitz, Suzanne, representative	35, 910-23
Joint legislative council, <i>see</i> Legislative council	
Jorgensen, Andy, representative	45, 910-23
Judd, R. Roth, executive director, ethics board	428
Judges	
appeals, court of	579, 585-86
circuit courts	579, 587-92
elections, <i>see</i> Election statistics	
supreme court	8-10, 578, 579, 583, 724-25
Judicial	
administrative districts	588
branch	252, 254, 577-612
special articles in prior <i>Blue Books</i>	193
commission	362, 580, 601-02

conduct advisory committee	599
conference	599-600
council	362, 580, 602
education committee	580, 600
elections	889-96
profile	579-82
Judicial selection, governor's advisory council on	349
Justice assistance office	362, 385-86
Justice department	328, 334, 458-63
Justices, supreme court, Wisconsin	8-10 , 578, 579, 583, 724-25, 889-91
list of, 1836 – 2007	724-25
Juvenile corrections division, corrections department	415-16, 417
Juvenile justice commission, governor's	349-50
Juveniles, interstate commission for	570-71
Juveniles, interstate compact for	575
Juveniles, interstate compact on	362, 575

K

Kagen, Steve, congressman	16, 901, 904
Kanavas, Theodore J., senator	84, 905-09
Kapanke, Daniel E., senator	82
<i>see also</i> 2005-2006 <i>Blue Book</i> , 909-13	
Kaufert, Dean R., representative	57, 910-23
Kedzie, Neal J., senator	40, 905-09
Kennedy, Kevin J., executive secretary, elections board	421
Kerkman, Samantha, representative	63, 910-23
Kessler, Frederick P., representative	27, 910-23
Kestell, Steve, representative	37, 910-23
Kettle Moraine correctional institution	414, 417, 825
Kickapoo reserve management board	363, 517
Kiesow, Harlan P., chief executive officer, Fox river navigational system authority	553
Kind, Ron, congressman	14, 736, 738, 899, 902
Kleefisch, Joel, representative	45, 910-23
Kohl, Herbert H., U.S. senator	11, 739, 897, 898
Kramer, Bill, representative	85, 910-23
Kreitlow, Pat, senator	64, 905-09
Kreunen, Rodney W., railroad commissioner	369, 494
Kreuser, James E., representative	19, 63, 260, 728, 910-23
Krusick, Peggy, representative	25, 910-23

L

Labor, <i>see</i> Employment relations	
commission; Office of state employment relations; Personnel commission; Workforce develop- ment department	
Labor and industry review commission	363, 552
Labor and management council	363, 551
Laboratories, state	
agricultural	397, 398
crime	459, 460

- laboratory of hygiene board 363, **539**
- La Crosse campus, UW system **531**, 537, 659, 660
- La Follette, Douglas J., secretary of
state **6**, 7, 326, 508,
722, 927, 928
- La Follette (Robert M.) institute
of public affairs 537
- Lake Michigan commercial fishing
board 363, **481**
- Lake states wood utilization consortium 363
- Lake Superior commercial fishing
board 363, **481**
- Lakes, largest in Wisconsin 687
- Lambeau field 329, 567-68
- Land, special articles in prior *Blue Books* 192
- Land acquisition, state 648, 656
- Land and inland lake areas, by county 688
- Land and water conservation board 363, **401**
- Land division, natural resources
department 472, **476-77**
- Land surveyors examining board,
see Architects, landscape architects,
professional engineers, designers
and land surveyors examining board
- Lands, commissioners of public 387-88
- Landscape architects examining board,
see Architects, landscape
architects, professional
engineers, designers and land
surveyors examining board
- Lang, Robert, director, legislative fiscal
bureau 306
- Lasee, Alan J., senator **20**, 905-09
- Lasee, Frank G., representative **21**, 910-23
- Lassa, Julie M., senator **66**
see also 2005-2006 *Blue Book*, 909-13
- Law enforcement services division,
justice department 458-59, **460-61**
- Law enforcement standards board 363, **462-63**
- Law library, state 580, **594-95**
- Law revision committee 293
- Lawyer regulation, office of 595-98
- Lawton, Barbara, lieutenant governor ... **4**, 7, 326, 375,
721, 925, 926,
933-60
- Lazich, Mary A., senator **74**
see also 2005-2006 *Blue Book*, 909-13
- Learning support: equity and
advocacy division, public
instruction department 485-86, **487**
- Legal aid, criminals 482-84
- Legal services division, justice
department 459-60, **461**
- Legislation, summary, 2005 session 312-24
- Legislative audit, joint committee on 290
- Legislative audit bureau 290, 299, 300, **305-06**
- Legislative branch 252, 253, **259-324**
- Legislative council, joint
committees 268, **290-99**, 300
292-99
- Legislative district maps 20-98
- Legislative fiscal bureau 299, 300, **306-07**
- Legislative organization,
joint committee on 266, 292, **299-301**
- Legislative reference bureau 270, 271, 273, 274,
299, 300, **307-09**
- Legislative technology services
bureau 299, 300, **310-11**
- Legislature 252, 253, **259-324**
- biographies and photos 20-85
- caucus chairpersons 29, 33, 50, 58, 260
- chief clerks 18, 19, **86**, 260,
264, 270, 729-30
- committees 263, 267-68, 270-72,
279-82, 283-304
- elections 262, 905-23
- for 2004 state senate
election, *see* 2005-2006
Blue Book, 909-13
- employees 262, 268
- floor leaders 18-19, 260
- hearings 270-73
- history 261
- hotline 260
- how a bill becomes a law 270-74
- internet information 260, 269
- legislative service agencies,
see also each agency 268, 290-99, 305-11
- majority leaders 18, 19, **45**, **48**, 260, 728
- assistant majority leaders 18, 19, **75**, **78**, 260
- maps of districts 20-98
- minority leaders 18, 19, **44**, **63**, 260, 728
- assistant minority leaders 18, 19, **33**, **36**, 260
- news media correspondents 269
- officers **18**, **19**, 260, 262-64, 726-30
- parliamentary procedure 272
- special articles in prior *Blue Books* 193
- personal data on members 116-17, 188-89
- pictures 20-86
- political composition 277
- president, senate 18, **70**, 260, 262, 726-27
- president pro tempore, senate 18, **24**, 260,
262, 726-27
- profile of legislative branch 261-68
- publications 266-67, 269, 276, 278
- representatives to the assembly 21-85, 260-68
- salaries of legislators 264-65
- schedule 265
- senators 20-84, 260-68
- sergeants at arms 18, 19, **86**, 260,
264, 268, 729-30
- service, legislative, how to order
(bills, acts, journals, bulletins) 276
- service agencies 268, 290-99, 305-11
- sessions 261, 265-66, 731-35
- speaker, assembly 19, **83**, 260, 264,
265, 726-27
- speaker pro tempore, assembly **19**, **59**, 260, 264
- summary of 2005 legislation 312-24
- telephone numbers, legislators' 20-85
- vetoes 253, 261, 273-74,
275, 331, 731-35
- Legislatures, 1848 – 2007
- chief clerk, 1848 – 2007 729-30
- majority and minority leaders,
1937 – 2007 728
- members, list of, 1848 – 2007 99-191
- officers, list of, 1848 – 2007 726-28
- president, senate

1848 – 1979 (lieutenant governor)	721
1848 – 2007	726-27
president pro tempore, senate	
1848 – 2007	726-27
sergeant at arms, 1848 – 2007	729-30
speaker of the assembly,	
1848 – 2007	726-27
Lehman, John W., senator	60, 905-09
Leibham, Joseph K., senator	18, 36, 260, 905-09
LeMahieu, Daniel R., representative	59, 910-23
Libertarian party, state	858, 871-73
Libraries, public	486, 487-88, 491, 614, 675
Libraries, Wisconsin state depository	614
Libraries, technology and community	
learning division, public instruction	
department	486, 487-88
Library, historical	448, 450-51
Library, legislative reference bureau	307-09
Library, state law	580, 594-95
Library and archives division, state	
historical society	448, 450-51
Library and network development,	
council on	364, 491
Licensed practical nurses examining	
council	499, 500
Licenses, drivers	333, 520, 524, 848, 852-53
Licenses and permits, fish, game,	
boats	474, 649
Licensing, trades and occupations	331, 495-503
Lieutenant governor	4, 7, 326, 327, 375
elections	925, 926, 933-60
list of, 1848 – 2007	721
Life insurance fund, state	453, 454
Lincoln Hills school	330, 460, 825
Linked deposit loan program	558
Liquor and wine tax	828, 836
Livestock facility siting review board	401-02
Loan originator review council	433
Lobbying	254, 334, 428-29, 434-35
Local government	254-55
special articles in prior <i>Blue Books</i>	192
Local government finance	826, 827, 832-33, 835, 837, 838, 841-47
Local government pooled-investment	
fund	509-10
Local government property insurance	
fund	454
Local government statistics	740, 741-77
indebtedness	844-45
Local housing organization grant program	405
Local law, significant legislation,	
2005 session	318
Long term care division, health and	
family services department	436, 439
Lothian, Thomas A., representative	41, 910-23
Lottery division, revenue department	503, 505
Lower St. Croix management	
commission	571
Lower Wisconsin state riverway	
board	364, 518

M

Madison campus, UW system	529, 537, 659, 660
Madison cultural arts district board	364, 566
Magazines, Wisconsin, <i>see</i> Periodicals	
Main street program	405, 408
council	364, 408
Majority leaders, legislative,	
<i>see</i> Legislature, majority leaders	
assistant majority leaders,	
<i>see</i> Legislature, assistant	
majority leaders	
Malpractice insurance, medical	454, 455
Manitowoc college – UW	534, 659, 660
Manufactured housing code council	408
Manufacturing statistics	640, 643, 676, 677-81, 684-85
Maps	
assembly districts	20-98
congressional districts	17
court of appeals districts	586
judicial administrative districts	588
regional planning commission	
areas	565
state agencies	251
state parks, forests, and trails	650
state senate districts	20-84, 87
Marathon county college – UW	535, 659, 660
Marchant, Robert J., senate chief clerk	18, 86, 260, 730
Marinette college – UW	535, 659, 660
Marketing services bureau,	
tourism department	514, 515
Marriage and family therapy, pro-	
fessional counseling and social	
work examining board	364, 498, 499
Marriage records, statistics	800, 809, 811
Marshfield/Wood county	
college – UW	535, 659, 660
Mason, Cory, representative	61, 910-23
Mass transit statistics	855
Massage therapy and bodywork	
council	364, 499
Meat inspection	395, 398
Medal of honor, Wisconsin,	
<i>see</i> 1983-1984 <i>Blue Book</i> , 338-39, 550	
Medical assistance (Medicaid)	439, 819, 822-23
Medical College of Wisconsin, Inc.	332, 339-40, 365, 663
Medical education review committee	365
Medical examiners	255, 747
Medical examining board	365, 497, 500
Medical malpractice insurance	454, 455
Mendota juvenile treatment center	331, 825
Mendota mental health institute	331, 438, 439, 825
Mental health, interstate compact on	575
Mental health and substance abuse	
service division, health and	
family services department	438, 439
Mental health, council on	365, 442
Mental health institutions	331, 333, 438, 439, 825
Merit award board (state employees),	
<i>see</i> State employees suggestion board	

- Merit recruitment and selection
 division, office of state
 employment relations 365, 390, **391**
- Metallic mining council 479
- Meyer, Dan, representative **43**, 910-23
- Meyer, Mark, commissioner,
 public service commission 369, 492
- Midwest interstate low-level
 radioactive waste commission 365, **571-72**
- Midwestern higher education
 commission 365, **572**
- Midwives advisory committee 497, 500
- Migrant labor, council on 365, **551**
- Military affairs department 328, 334, **463-71**
- Military and state relations, council on **337-38**, 365
- Military and veterans statistics 778-84
- Milk production 616, 617, 619
- Miller, Mark, senator **50**, 260
see also 2005-2006 Blue Book, 909-13
- Miller Park 329, 567
- Miller, Stephen R., chief, legislative
 reference bureau 307
- Milwaukee campus, UW system **529-30**, 537,
 659, 660
- Milwaukee child welfare
 partnership council 366, **445**
- Milwaukee parental choice program 487
- Milwaukee river revitalization council 366, **479**
- Milwaukee secure detention facility 414, 825
- Mineral, state (galena) 964
- Minimum wages 333, 549, 550
- Mining 475, 479, 507
- Minority business development board 366, **411**
- Minority leaders, legislative,
see Legislature, minority leaders
 assistant minority leaders,
see Legislature, assistant minority leaders
- Mississippi river parkway commission 366, **572-73**
- Mississippi river regional planning
 commission 563
- Molepske, Louis John, Jr., representative .. **67**, 910-23
- Moulton, Phil, representative **23**, 910-23
- Moore, Gwendolynne S.,
 congresswoman **14**, 737, 738, 900, 903
- Morgan, Michael, secretary,
 administration department 354, 376
- Motor carriers regulation 524
- Motor fuel tax 640, 642, 828, 832-33, 836
- Motor vehicles
 crashes 852-54
 registration 333, 524, 848, 851
- Motor vehicles division,
 transportation department 520-22, **524**
- Motorcycle statistics 851, 853
- Motto, state 962-63
- Moulton, Terry, representative **65**, 910-23
- Mueller, Janice L., state auditor 304
- Multifamily dwelling code council 366, **408-09**
- Municipal boundary review program 380, 381
- Municipal courts 580, 581, **593**
- Municipal pensions 424-25
- Municipalities, *see* Cities, Towns, or
 Villages, respectively
- Munson, Bruce, revisor of statutes 309
- Mursau, Jeffrey L., representative **43**, 910-23
- Murtha, John, representative **39**, 910-23
- Museum, Wisconsin veterans 543, 545
- Museum division, state historical
 society 449, **451**
- Music, art and dance therapists,
 registration of 501
- Musser, Terry M., representative **81**, 910-23

N

- Nass, Stephen L., representative **41**, 910-23
- National and community service
 board 367, **386**
- National guard 334, **463-71**, 778, 781-82
- Natural areas preservation council 479
- Natural resources
 air pollution 333, 472, **474-75**, 539, 655
 board 367, 471, **474**, 477
 department 328, 333, **471-82**
 fish, game 333, 474, **477**, 481, 648,
 649, 654, 655, 656, 657
 forestry 333, 472, **475-76**, 648, 650,
 651-53, 654, 655, 656, 657
 forestry, council on 360, **478-79**
 groundwater coordinating
 council 360, **480**
 groundwater protection 333, 395, 397-98, 474,
477, 478, 480, 570
 hearings and appeals 384
 law enforcement 472, **475**
 outdoor recreation act program 477, 648, 656
 parks and forests, state 333, 472, **475-77**,
 478, 648, 650-57
 solid waste 333, 472, **474-75**, 478, 655
 significant legislation, 2005 session 318-19, 324
 special articles in prior *Blue Books* 192
 statistics 648-57
 trails, state 476-77, 648-53
 water pollution 333, 474, **477**, 539, 655
- Navigability and drainage ditches,
 special committee on 296
- Nelson, Tom, representative **23**, 910-23
- Nerison, Lee, representative **83**, 910-23
- Neumann, Judith M., employment
 relations commission chair 359, 427
- New Lisbon correctional institution 414, 417, 825
- Newcomer, Scott, representative **41**, 910-23
- News media statistics 785-99
- Newspapers in Wisconsin, list of 785-88
- Nilsstuen, Rodney J., secretary,
 agriculture, trade and consumer
 protection department 355, 395
- Nines, Lawrence R., executive director,
 health and educational
 facilities authority 556
- Nonpartisan elections,
see Election statistics
- Nonprofit corporations 329, 355, 356, **560-61**

Norman, Diane, commissioner,
tax appeals commission 372, 392

North Central Wisconsin regional
planning commission 563-64

Northern Wisconsin center for
developmentally disabled 436, 825

Northwest Wisconsin regional
planning commission 564

Notaries public 509

Nuclear power, special committee on 296

Nurse licensure compact 575

Nurses
licensed practical nurses
examining council 499, 500
registered nurses examining
council 499, 500

Nursing board 367, 499, 500

Nursing home administrator
examining board 367, 497, 500

Nygren, John, representative 79, 910-23

O

Oakhill correctional institution 414, 417, 825

Obey, David R., congressman 16, 737, 738, 901, 904

Occupational regulation, significant
legislation, 2005 session 319, 324

Occupational therapists affiliated
credentialing board 367, 498, 500

Oil inspection,
see Petroleum inspection

Olsen, Luther S., senator 46
see also 2005-2006 Blue Book, 909-13

Optometry examining board 367, 499, 500

ORAP,
see Outdoor recreation act program

Organization chart, state government 256-57

Organizations, statewide 625-39

Oshkosh campus, UW system 531, 537, 659, 660

Oshkosh correctional institution 414, 417, 825

Ott, Alvin R., representative 21, 910-23

Ott, Jim, representative 35, 910-23

Outdoor recreation act program 477, 648, 656

Owens, Carol, representative 55, 910-23

P

Pardon advisory board 350

Pari-mutuel wagering, *see* Gaming
division, administration department

Parisi, Joseph T., representative 51, 910-23

Parks, state 333, 472, 476, 648, 650-57

Parkside campus, UW system 532, 537, 659, 660

Parole 415, 417, 418-19,
574, 576, 825

Parole commission 367, 417, 418-19

Parolees and probationers, interstate
compact for supervision of 362, 576

Party platforms, state,
see Political party organizations

Patients compensation fund,
see Injured patients and families
compensation fund

Patients compensation fund peer review
council, *see* Injured patients and
families compensation review council

Peace symbol, state (mourning dove) 964

Pensions, *see* Retirement

Perfusionist examining council 498, 500

Periodicals, Wisconsin 789-96

Petersen, Kevin David, representative 47, 910-23

Petri, Thomas E., congressman 15, 737-38,
900, 903

Petroleum
inspection 404, 405, 828
petroleum storage environmental
cleanup council 368, 409
petroleum storage environmental
cleanup fund awards (PECFAs) 404, 405, 406
use of 641

Petrowski, Jerry, representative 77, 260, 910-23

Pharmacist advisory council 498, 500

Pharmacy examining board 368, 498, 500

Physical disabilities, council on 368, 445

Physical fitness and health, governor's
council on 350-51

Physical therapists affiliated
credentialing board 368, 498, 500

Physically handicapped education 487, 490

Physically handicapped employment 549

Physician assistants, council on 368, 498, 500

Physicians' licenses,
see Medical examining board

Placement of children, interstate
compact on 362, 575-576

Placement of sex offenders,
special committee on 296

Plale, Jeffrey T., senator 32, 260, 905-09

Planning
coastal management 343-44, 380-81
emergency 466, 471
energy 376, 379, 380
regional 562-65

Planning and policy advisory
committee (judicial agency) 600-01

Plat review program 380, 381

Platforms, state political party,
see Political party organizations

Platteville campus, UW system 532, 537, 659, 660

Plumbers council 409

Pocan, Mark, representative 71, 910-23

Podiatrists affiliated credentialing
board 368, 498, 500

Poet laureate commission, governor's 351

Political parties in Wisconsin 262, 858-60

Political party organizations
Democratic party of Wisconsin 861-65
Libertarian party of Wisconsin 871-73
Republican party of Wisconsin 874-78
Wisconsin Green party 866-70

Pollution
air 333, 472, 474, 539, 655

solid waste 333, 472, **474**, 655
 water 333, 474, **477**, 539, 655
 Pope-Roberts, Sody, representative **73**, 910-23
 Population and vital statistics 380, 439,
 800-06, 808-12
 cities 740, 749-52, 759, 762-77
 congressional districts 17
 counties 740, 743, 762-77
 special articles in prior *Blue Books* 192
 statistics 740, 749-77
 towns 740, 761, 762-77
 villages 740, 753-60
 Ports 848, 856
 Post offices in Wisconsin 813-18
 Powers and duties of coroners and
 medical examiners, special
 committee on 297
 Prairie du Chien
 correctional facility 414, 418, 825
 Prasse, Randy, executive director,
 state fair park 518
 Precipitation by month and region 687, 690
 Pregnancy prevention and services 438
 President of senate 18, **70**, 260, 262, 727
 President pro tempore of senate 18, **24**, 260,
 262, 726-27
 Presidential elections, historical list 714-16
 Press corps, capitol 269
 Pridemore, Don, representative **85**, 910-230
 Primary election, *see* Election statistics
 Primary home loan program 545
 Prison industries board 368, **419**
 Prisons and prisoners,
 see Correctional institutions
 Private detectives and detective
 agencies, licensing of 496
 Private employer health care
 coverage board 368, **426**
 Private security persons, licensing of 496
 Probation 415, 417, 418-19,
 574, 576, 825
 Professional credential processing division,
 regulation and licensing department 495, **503**
 Professional football stadium district 567-68
 Professional fund-raisers, licensing of 496
 Professional standards council for teachers 491
 Property tax
 administration, supervision 504, 506
 assessments 504, 506, 826, 846-47
 relief 826, 835, 845-47
 revenues 826, 835-37, 845-47
 Prosser, David T., Jr., supreme court
 justice 9, **10**, 578, 583, 725
 Psychology examining board 368, **499**, 500
 Psychiatric research institute 537
 Public assistance
 children and family services division,
 health and family services
 department 436, **438**
 expenditures, recipients 819-23
 Public defender, state,
 see State public defender

Public defender board 328, 368, 482, **483**
 Public employees, labor relations 359, 390-91
 Public employees, state and local 329-30, 390-91,
 740-42
 Public health council 369, **442**
 Public health division, health
 and family services department 438, **439**
 Public instruction, state superintendent
 of, *see* Superintendent
 of public instruction
 Public instruction department 328, 331, 332, **484-92**
 Public lands commissioners board 387-88
 Public radio division, educational
 communications board 420, **421**
 Public records board 369, **388**
 Public service commission 328, 332, 369, **492-94**
 commissioners 369, 492
 Public television division, educational
 communications board 420, **421**
 Public utilities
 regulation 331-32, 492-94
 significant legislation, 2005 session 319-20
 taxes 828
 Public welfare statistics 819-23
 Publications, Wisconsin 785-96
 Purcell, Gene, interim executive director,
 educational communications board 420

Q-R

Qualification of educational personnel,
 interstate agreement on 576
 Quality assurance division, health and
 family services department 438, **439**
 Racine correctional institution 414, 417, 825
 Racine youthful offender correctional
 institution 414, 825
 Radio stations 797-99
 educational 799
 Railroads
 mileage, usage and revenue 849
 regulation 494-95
 taxation 828, 832-33
 Railroads commissioner, office of the 369, **494-95**
 Rate regulation
 insurance 331-32, **453-55**
 public utilities 331-32, **492-94**
 Reading and student achievement
 division, public instruction
 department 486, **488**
 Real estate
 appraisers, licensing of **497**, 500
 appraisers board 369, **497**, 500
 board 369, **497**, 500
 brokers and salespersons,
 licensing of 496
 curriculum and examinations,
 council on 369, **497**, 500
 significant legislation, 2005 session 320
 Recall 883
 Recodification of chapter 21,
 military affairs, special committee on 297
 Recreation act program, outdoor 477, 648, 656

Recreation areas, state 476, 648, 650, 651-53
 Recreation statistics 648-57
 Recycling 475, 654
 Recycling, council on 369, **481**
 Redgranite correctional institution 414, 417, 825
 Reducing racial disparities in the
 judicial system, commission on 351
 Reference and loan library, public
 instruction department 486, **488**
 Reference bureau, legislative 299, **307-09**
 Referenda 247-48, **882-83**, 888
 Regional planning commissions 562-65
 Regional transit authority 369, **566-67**
 Registered nurses, examining council on **499**, 500
 Registers of deeds 746
 Regulation and enforcement division,
 commissioner of insurance 453, **454**
 Regulation and licensing department 328, 331, 369,
 495-503
 Rehabilitation council, state 352
 Reilly, Kevin P., president,
 University of Wisconsin system 527
 Reorganization of executive branch
 see 1968 Blue Book, 366-78
 Reporters, capitol 269
 Representatives to the assembly, *see* Assembly
 Representatives, U.S., from Wisconsin,
 see Congressional representatives
 from Wisconsin
 Republican party, state 858, 859, **874-78**
 Research and policy division,
 revenue department 504, **505-06**
 Respiratory care practitioners
 examining council 369, **498**, 500
 Retirement
 public employees 301, 423-26
 teachers 423-26
 Retirement board, Wisconsin 370, **426**
 Retirement services division, employee
 trust funds department 423, **424**
 Retirement systems, joint survey
 committee on **301**, 370
 Revenue department 328, 332, 370, **503-07**
 Revenue statistics,
 see State and local finance statistics
 Review of crimes against children,
 special committee on 297-98
 Review of state school aid formula,
 special committee on 298
 Revisor of statutes bureau 299, **309-10**
 Rhoades, Kitty, representative **39**, 910-23
 Richards, Jon, representative 19, **33**, 260, 910-23
 Richland college – UW 535, 659, 660
 Riley, Antonio R., executive director,
 Wisconsin housing and economic
 development authority 362, 557
 Risser, Fred, senator 18, **70**, 260
 see also 2005-2006 Blue Book, 909-13
 River Falls campus, UW system **532**, 537, 659, 660
 Roads, *see* Highways

Robson, Judith Biros, senator 18, **48**, 260, 905-09
 Rock, state (red granite) 964
 Rock county college (Janesville) – UW 535, 659, 660
 Roessler, Carol A., senator **54**, 260
 see also 2005-2006 Blue Book, 909-13
 Roggensack, Patience Drake, supreme
 court justice **9**, **10**, 578, 583, 725
 Roth, Roger J., Jr., representative **57**, 910-23
 Rural economic development board 370, **411**
 Rural health development council 370, **409-10**
 Rustic roads board 526
 Ryan, Paul, congressman **13**, 737-38, 899, 902

S

Safety and buildings division,
 commerce department 404, **406**
 Salaries of state officers 264-65, 326, 583
 Sand Ridge secure treatment center 438, 439, 825
 Sass, Dawn Marie, state treasurer **6**, 7, 326, 509,
 722, 931, 932
 Savings institutions review board 370, **433**
 Schneider, Marlin D., representative **67**, 910-23
 Scholarships and loans 446
 School district boundary appeal board 491-92
 Schools
 aids 487, 665, 672
 charter 674
 comparative data, by state 664, 668-72
 cooperative educational service
 agencies (CESA) 332
 districts 255, 665
 dropouts 667
 enrollment 658-63, 665, 666, 673, 674
 expenditures 665, 668-673
 home-based 673
 private colleges 658, 663
 public instruction department 484-90
 special articles in prior Blue Books 192
 statistics 658-75
 superintendent, state **6**, 7, 326, 484, 723
 teachers 485, 486, 491, 668, 669
 technical colleges 662
 University of Wisconsin 527-38, 659-61
 Schultz, Dale W., senator **52**, 905-09
 Scocos, John A., secretary,
 veterans affairs department 541
 Seal, state 509, 962
 Secretary of state **6**, 7, 326, 334, **508-09**
 elections 927-28
 list of, 1848 – 2007 721-22
 Securities division, financial institutions
 department 430, **432**
 Seidel, Donna J., representative **77**, 260, 910-23
 Self-insurers council 551
 Senate, Wisconsin
 caucus chairpersons **50**, **58**, 260
 chief clerk 18, **86**, 260, 729-30
 committees 267-68, 279
 elections 905-09
 for 2004 election, *see*
 2005-2006 Blue Book, 909-13
 majority leader 18, **48**, 260, 728

- assistant majority leader 18, **78**, 260
 maps of districts 20-84, **87**
 members, biographies and photos 20-84
 members, list of, 1848 – 2007 101-117
 minority leader 18, **44**, 260, 728
 assistant minority leader 18, **36**, 260
 officers 18, 260, 726-30
 president 18, **70**, 260, 727
 president pro tempore 18, **24**, 260, 726-27
 sergeant at arms 18, **86**, 260, 729-30
 sessions 731-35
 term of office 261
 Senators, U.S., from Wisconsin 11, 12
 elections 897-98
 list of, 1848 – 2007 739
 Sensenbrenner, F. James, Jr.,
 congressman **15**, 737-38, 900, 903
 Sentencing commission 370, **388-89**
 Sergeants at arms, legislature 18, 19, **86**, 260
 list of, 1848 – 2007 729-30
 Service award board 370, **389**
 Session laws (Wisconsin acts) 274, 278
 Sexual assault victim services 460
 Shared revenue, state 506, 826, 834, 835
 Sheboygan college – UW 535, 659, 660
 Sheridan, Michael J., representative **49**, 910-23
 Sheriffs 747
 Sherman, Gary E., representative **69**, 910-23
 Shilling, Jennifer, representative **83**, 910-23
 Shoreland zoning 477
 Significant events in Wisconsin history 692-702
 Sinicki, Christine, representative **33**, 910-23
 Skindrud, Richard A., assembly
 sergeant at arms 19, **86**, 260, 729-30
 Small business clean air
 assistance program 410
 Small business environmental council 370, **410**
 Small business ombudsman program 405
 Small business regulatory review board 370, **411**
 Small business, veteran-owned
 business and minority business
 opportunities, council on 382
 Smith, Jeff, representative **81**, 910-23
 Snowmobile recreational council 371, **479-80**
 Social services, *see* Health and family
 services department
 Social services statistics 819-25
 Societies, statewide 625-39
 Soil, special articles in prior *Blue Books* 192
 Soil, state (Antigo silt loam) 964-65
 Soleski, Jim, representative **79**, 910-23
 Solid waste management 472, **474**, 655
 Sollenberger, Donna K., president,
 University of Wisconsin
 hospitals and clinics authority 555
 Song, state (“On, Wisconsin”) 963
 Southeast Wisconsin professional baseball
 park district board 371, **567**
 Southeastern Wisconsin regional
 planning commission 564
 Southern Oaks girls school 416, 418, 825
 Southern Wisconsin center for
 developmentally disabled 436, 825
 Southern Wisconsin veterans
 memorial cemetery 543
 Southwestern Wisconsin regional
 planning commission 564-65
 Speaker of assembly 19, **83**, 260, 726-27
 Speaker pro tempore of assembly 19, **59**, 260
 Special education, council on 492
 Speech-language pathology and
 audiology, council on 371, **497**, 499
 SPRITE program 416, 825
 Stanchfield, Eric O., secretary, employee
 trust funds department 423
 Standards development council 338
 Stanley correctional institution 414, 417, 825
 Staskunas, Anthony J., representative **29**, 260,
 910-23
 State aids and shared taxes 506, 834, 835, 846
 State and local finance
 comparative, by state 836-38, 843
 conservation 654, 655, 828, 831, 838
 county 834, 835, 847
 excise (cigarette, tobacco, alcohol) 828
 federal aid 841-42
 investments 456-58
 property taxes 834, 835, 845, 847
 public debt 844-45
 sales tax 828
 school finance 665, 670-71,
 829, 835, 838
 state aids and shared taxes 834, 835, 846
 state and local finance statistics 826-47
 state budget 253, 274, 287-89, 306-07,
 335, 376, 380, 826-33
 state expenditures 826-27, 829-35, 838
 state revenues 826, 828, 830-37
 transportation 832, 833
 utilities 828
 State and local finance division,
 revenue department 504, **506**
 State bar of Wisconsin 603-04
 State capitol and executive residence
 board 371, **389**
 State capitol, special articles
 in prior *Blue Books* 193
 State elected officers **4-10**, 326
 elections, *see* Election statistics
 list of, 1848 – 2007 721-23
 State employees
 benefits 329-30, 423-26
 civil service 329-30, 390-92
 collective bargaining 329-30, 390-92
 composition 740-42
 insurance 423-26
 legislative employees 262, 268
 number 330, 740-42
 retirement system 423-26
 salaries 264-65, 287, 326,
 390-91, 741-42
 suggestion board 371, 390, **392**
 State facilities division,
 administration department 378, **380**
 State fair park board 371, **518-20**

State finance, <i>see</i> State and local finance	
State government	
executive branch	325-576
framework	252-55
judicial branch	577-612
legislative branch	259-324
organization chart	256-57
significant legislation, 2005 session	320
special articles in prior <i>Blue Books</i>	192-93
State law library	594-95
State parks, forests, trails, recreation	
areas	472, 476 , 648, 650, 651-53
attendance	648, 651-53
State patrol division, transportation	
department	522, 524
State prison,	
<i>see</i> Correctional institutions	
State public defender office	328, 334, 368, 482-84
State recreational areas and trails	651-53
State soils and plant analysis	
laboratories	537
State superintendent of public instruction, <i>see</i> Superintendent of public instruction	
State supported programs study and advisory committee	301-02
State symbols, <i>see</i> Symbols, state	
<i>see also</i> front and back endpapers	
State trails council	371, 480
State trails policy, special committee on	298-99
State treasurer	6, 7, 326, 334, 509-10
elections	931-32
list of, 1848 – 2007	722
State-Tribal relations, special committee on	292
Technical advisory committee	292-93
State use board	372, 392
Statistics	613-856
Statutes	278
Steinbrink, John P., representative	63 , 910-23
Stevens Point campus, UW system	533 , 537, 659, 660
Stewardship program	477-78 , 648, 656
Still, Tom, president, Wisconsin technology council (high-technology business development corporation)	561
Stocks and bonds regulation	430, 432
Stone, Jeff, representative	75, 910-23
Stout campus, UW system	533 , 537, 659, 660
Strachota, Pat, representative	59 , 260, 910-23
Strengthening Wisconsin families, special committee on	299
Student financial aids	446
Sturtevant transitional facility	825
Suder, Scott, representative	65 , 910-23
Suggestion board, state employees	371, 390, 392
Suggestion program	390, 392
Sullivan, Jim, senator	28 , 260, 905-09
Superintendent of public instruction	6, 7, 326, 332
list of, 1848 – 2007	723
Superior campus, UW system	533 , 537, 659, 660
Supreme court	8-10, 578, 579, 583-84

elections	889-91
justices, list of, 1836 – 2007	724-25
Surveyors, county	748
Symbols, state	962-66
<i>see also</i> front and back endpapers	
animals (badger, cow, white-tailed deer)	964
ballad (“Oh Wisconsin, Land of My Dreams”)	965-66
beverage (milk)	965
bird (robin)	963
coat of arms	962
dance (polka)	965
dog (American water spaniel)	965
fish (muskellunge)	964
flag	963
flower (wood violet)	963
fossil (trilobite)	965
fruit (cranberry)	966
grain (corn)	965
insect (honey bee)	964
mineral (galena)	964
motto	962-63
peace symbol (mourning dove)	964
rock (red granite)	964
seal	509, 962
soil (Antigo silt loam)	964-65
song (“On, Wisconsin”)	963
tree (sugar maple)	963
waltz (“The Wisconsin Waltz”)	966

T

Tauchen, Gary, representative	23 , 910-23
Tax appeals commission	372, 392-93
Tax exemptions, joint survey committee on	302-03 , 372
Taxation and finance statistics, <i>see</i> State and local finance statistics	
Taxation, significant legislation, 2005 session	320
Taxpayer services division, revenue department	505, 506
Taycheedah correctional institution	414, 417, 825
Taylor, Lena C., senator	26
<i>see also</i> 2005-2006 <i>Blue Book</i> , 909-13	
Teachers’ certificates, licenses, standards	485, 486
Teachers retirement board, state	372, 426
Teaching and learning division, technical college system	511, 512
Technical college system	
board	328, 332, 372, 510-13
districts	511, 662
enrollment statistics	662
special articles in prior <i>Blue Books</i>	192
Technology council, Wisconsin (High-technology business development corporation)	329, 561
Technology services bureau, legislative	299, 310-11
Telecommunications division, public service commission	492, 493
Telecommunications privacy council	494
Telecommunications relay service council	352
Television stations	797

Temperature, by month and region 687, 690
 Toles, Barbara L., representative 31, 910-23
 Tourism, council on 372, 515
 Tourism department 328, 372, 514-15
 Towns 255, 740, 761
 population, by county 762-77
 special articles in prior *Blue Books* 192
 Townsend, John F., representative 55, 910-23
 Trade and consumer protection division,
 agriculture, trade and
 consumer protection
 department 397, 398
 Trade practices 397, 398
 Trades and occupations, *see* Regulation
 and licensing department
 Trails, state 476, 648, 650-53
 Transit systems 855
 Transportation aids,
 see State and local finance
 Transportation department 328, 333, 372, 520-25
 Transportation investment management
 division, transportation department 522-23, 524
 Transportation projects commission 303, 372
 Transportation, significant legislation,
 2005 session 320-22
 Transportation statistics 848-56
 Transportation system development
 division, transportation department 523, 524-25
 Trauma advisory council 442-43
 Travis, David M., representative 73, 910-23
 Treasurer, state, *see* State treasurer
 Treasurers, county 746
 Tree, state (sugar maple) 963
 Trial division, state public defender office 483
 Trucks, *see* Motor carriers
 Trumble, Kelli A., secretary,
 tourism department 372, 514
 Trust finance and employer services division,
 employee trust funds department 423, 424
 Trust lands and investment division,
 administration department 387-88
 Turner, Robert L., representative 61, 910-23

U

Unemployment
 insurance division,
 workforce development department 547, 549
 statistics 676-78, 682
 Unemployment insurance, council on 551-52
 Unemployment insurance division,
 workforce development department 547, 549
 Uniform debt management services,
 special committee on 299
 Uniform state laws, commission on 303-04, 372
 Uniformity of traffic citations and
 complaints, council on 527
 United Nations, governor's
 commission on the 353

U.S. congressional representatives
 from Wisconsin, *see* Congressional
 representatives from Wisconsin
 U.S. president, *see* Election statistics
 U.S. senators from Wisconsin,
 see Senators, U.S., from Wisconsin
 Universal service fund council 494
 University of Wisconsin hospitals and
 clinics authority 329, 372, 555
 University of Wisconsin system 328, 332, 527-38
 board of regents 373, 527, 538
 enrollment statistics 659-60
 extension 535, 661
 system administration 527
 Upper Mississippi river basin
 association 573
 Urban education, institute for
 excellence in 537
 Utilities, public, *see* Public utilities
 Utility public benefits, council on 373, 393

V

Van Akkeren, Terry, representative 37, 910-23
 Van Hollen, J.B., attorney general 6, 7, 326, 458,
 723, 929-30
 Van Roy, Karl, representative 79, 910-23
 Veterans, special articles in prior *Blue
 Books* 193
 Veterans affairs department 328, 334, 541-46
 benefits, grants, loans 334, 543-45,
 778-80, 783-84
 board 373, 541
 memorial cemeteries 541, 543, 544
 programs council 546
 services division 543, 544
 statistics 778-80, 783-84
 veterans homes 331, 334, 541, 544, 783
 Wisconsin veterans museum 543, 545
 Veterans benefits division, veterans
 affairs department 541, 543-44
 Veterans homes division, veterans
 affairs department 541, 544
 Veterans services division,
 veterans affairs department 543, 544
 Veterans, significant legislation, 2005 session 322
 Veterinarian, state 395
 Veterinary diagnostic laboratory board 373, 540
 Veterinary examining board 373, 498, 500
 Veterinary medicine, school of 537
 Vetoes, governor's 273-74, 275,
 335-36, 731-35
 Victim/witness assistance program 460
 Victims' rights
 crime victims council 462
 crime victims' rights board 357, 462
 Villages, incorporation year, number,
 population 255, 740, 753-60
 special articles in prior *Blue Books* 192
 Vinehout, Kathleen, senator 80, 905-09
 Vital statistics 800, 809-12
 Vocational rehabilitation division,
 workforce development
 department 547-49

Voelker, John, director of state courts 594
 Vos, Robin J., representative 61, 910-23
 Voter registration 883-84
 Vruwink, Amy Sue, representative 67, 910-23
 Vukmir, Leah, representative 29, 910-23

W

W-2, *see* Wisconsin Works
 Waltz, state (“The Wisconsin Waltz”) 966
 Wars, participants and fatalities 778-79
 Washington county college – UW 535, 659, 660
 Wasserman, Sheldon A.,
 representative 35, 910-23
 Waste facility siting board 373, **393-94**
 Water, compliance and consumer affairs
 division, public service commission 492, **493**
 Water area, Wisconsin counties 687, 688
 Water division, natural resources
 department 474, **477**
 Water resources 474, **477**, 687, 688
 special articles in prior *Blue Books* 192
 Waterports, *see* Harbors
 Waterways commission, Wisconsin 373, **481-82**
 Waukesha college – UW 535, 659, 660
 Waupun correctional institution 412, 417, 825
 Weatherization program 379
 Welfare statistics 819-23
 West Central Wisconsin regional
 planning commission 565
 Whitewater campus, UW system 534, 537, 659, 660
 Wicckert, Steve, representative 57, 910-23
 Wildlife 472, 476
 special articles in prior *Blue Books* 192
 Williams, Annette P.,
 representative 27, 910-23
 Williams, Mary, representative 77, 260, 910-23
 Winnebago mental health institute 438, 439, 825
 Wirch, Robert W., senator 62
see also 2005-2006 Blue Book, 909-13
 Wisconsin aerospace authority 329, **553**
 Wisconsin apprenticeship council 550-51
 Wisconsin center district 373, **568**
 Wisconsin center for the blind
 and visually impaired 486, **487**
 Wisconsin constitution,
see Constitution, Wisconsin
 Wisconsin consumer act 431
 Wisconsin correctional center system 414-15,
416, 825
 Wisconsin development fund 332, **410**
 Wisconsin educational services program
 for the deaf and hard of hearing 486, **487**
 WisconsinEye 269
 Wisconsin great lakes compact
 commission 360, **569-70**
 Wisconsin Green party 858, **866-70**
 Wisconsin health and educational
 facilities authority 329, **556**

Wisconsin housing and economic
 development authority 329, **557-58**
 Wisconsin resource center 438, 439, 825
 Wisconsin retirement board 370, **426**
 Wisconsin secure program facility 412, 825
 Wisconsin state prison,
see Correctional institutions
 Wisconsin veterans museum 543, **545**
 Wisconsin Works (W-2) 333, **549**, 819, 821
 Women’s council, Wisconsin 373, **394**
 Wood, Jeffrey, representative 65, 910-23
 Worker’s compensation
 council 552
 division, workforce development department 549
 rating committee 373
 special articles in prior *Blue Books* 192
 Workforce development department 328, 333,
 373, **546-50**
 Workforce investment, governor’s
 council on 353
 World dairy center authority 329, 374, **559**
 Writers, Wisconsin, special articles
 in prior *Blue Books* 192

X-Y

Ylvisaker, Jeff, interim director,
 legislative technology services bureau 310
 Young, Leon D., representative 31, 910-23
 Youth leadership training center 825

Z

Zepnick, Josh, representative 25, 910-23
 Ziegelbauer, Bob, representative 37, 910-23
 Ziegler, Annette K.,
 supreme court justice 9, 10, 578, 583,
 725, 889, 891
 ZIP codes 813-18
 Zipperer, Rich, representative 85, 910-23